



19 Pleasance Road North, Lydd On Sea

Romney Marsh

In Excess of £315,000

# 19 Pleasance Road North

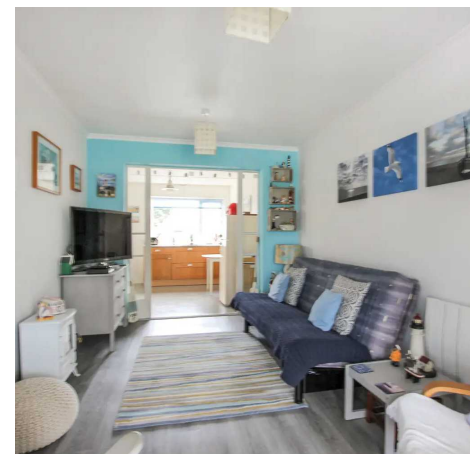
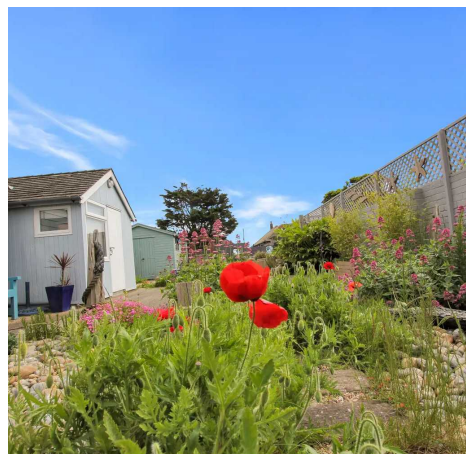
Lydd On Sea, Romney Marsh

Chain Free Semi Detached Bungalow in prime coastal location with cosy living space, spacious kitchen, Fantastic Covered Courtyard, two double bedrooms, ensuite, Extra Cabin Room, garage, partial sea views, Low Maintenance Garden, Games Room, ideal for leisurely gatherings. Tranquil outdoor space with manicured gardens, covered courtyard, paved area for alfresco dining, and serene sea views, perfect for coastal living.

Council Tax band: B

Tenure: Freehold

- Semi Detached Bungalow
- Cosy Living Space
- Fantastic Covered Courtyard
- Two Double Bedrooms
- Low Maintenance Garden
- Games Room
- Ensuite Shower Room
- Chain Free
- Extra Cabin Room





### Entrance Porch

### Living Room

13' 6" x 8' 10" (4.12m x 2.69m)

### Kitchen

11' 0" x 10' 11" (3.35m x 3.33m)

### Inner Hallway

### Utility Room

### Shower Room

### Bedroom

8' 2" x 11' 5" (2.49m x 3.48m)

### Covered Courtyard

12' 1" x 16' 0" (3.68m x 4.89m)

### Bedroom

18' 8" x 9' 0" (5.69m x 2.75m)

### En-Suite Shower Room

### Garden Cabin Room

8' 8" x 9' 2" (2.63m x 2.79m)





## Ground Floor

Approx. 89.7 sq. metres (965.2 sq. feet)



Total area: approx. 89.7 sq. metres (965.2 sq. feet)

Plans are for layout purposes only and not drawn to scale, with any doors, windows and other internal features merely intended as a guide.  
Plan produced using PlanUp.

These particulars are intended to give a fair and reliable description of the property but no responsibility for any inaccuracy or error can be accepted and do not constitute an offer or contract. We have not tested any services or appliances (including central heating if fitted) referred to in these particulars and purchasers are advised to satisfy themselves as to the working order and condition, if a property is unoccupied at any time there may be reconnection charges for any switched off/disconnected or drained services or appliances. All measurements are approximate.



**Andrew & Co Estate Agents - New Romney**

01797 362898

[newromney@andrewandco.co.uk](mailto:newromney@andrewandco.co.uk)

