

# Valley Drive, Kirkella

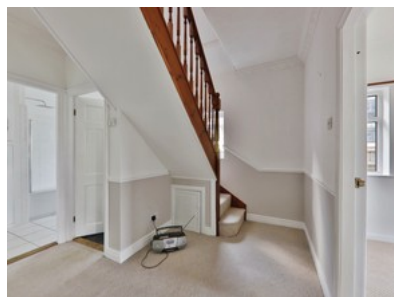
## Guide Price £380,000 - £400,000



**beercocks**  
valuing people, not just houses



- ✔ Prime Westella Road Vicinity
- ✔ Spacious 1560 Sq Ft Layout.
- ✔ Newly Refitted Kitchen And Bathroom
- ✔ Elevated West-facing Plot With Private Drive
- ✔ Four Double Bedrooms, Two Bathrooms
- ✔ Immediate Possession Available
- ✔ Near St Andrews School And Golf Course.
- ✔ Freehold
- ✔ Council Tax Band E
- ✔ Epc Rating D



Bedroom  4 Bathroom  2 Reception  3

Guide Price

**£380,000**