



MILE



Artisan Mews, London NW10 £975,000 Leasehold

Welcome to Artisan Mews; where you will find this four bedroom home of 1583 square foot. Welcome to Artisan Mews, an exquisite four-bedroom modern built mews house nestled in the heart of NW10. Spanning an impressive 1,583 square feet across four meticulously designed floors, this home offers a harmonious blend of style and functionality. Boasting a 970+ year lease, this chain-free property is tastefully decorated throughout, ensuring a seamless move-in experience. The thoughtfully planned layout includes spacious bedrooms, providing ample room for family and guests. One of the standout features is the allocated off-street parking, ensuring convenience in a prime location. The kitchen opens up to a private garden/courtyard, perfect for alfresco dining and creating an ideal space for outdoor entertaining and relaxation. Artisan Mews offers easy access to the vibrant areas of Ladbroke Grove and Portobello Road, known for their eclectic mix of shops, cafes, and cultural attractions. This home truly captures the essence of modern living in a sought-after neighbourhood. Experience the perfect blend of luxury, convenience, and style at Artisan Mews.

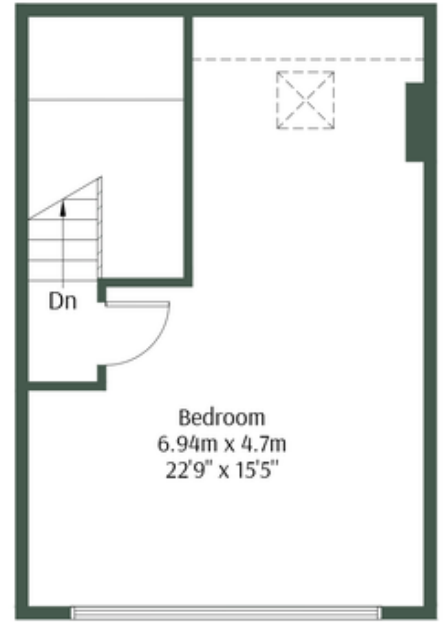
- **Modern mews house**
- **Secure block**
- **Allocated off street parking**
- **970+ year lease**
- **Chain Free**
- **Excellent condition**
- **Outside space**
- **Four bedrooms**
- **1583 sq ft**
- **Close to shops and transport**

Warfield Road, NW10 5GL

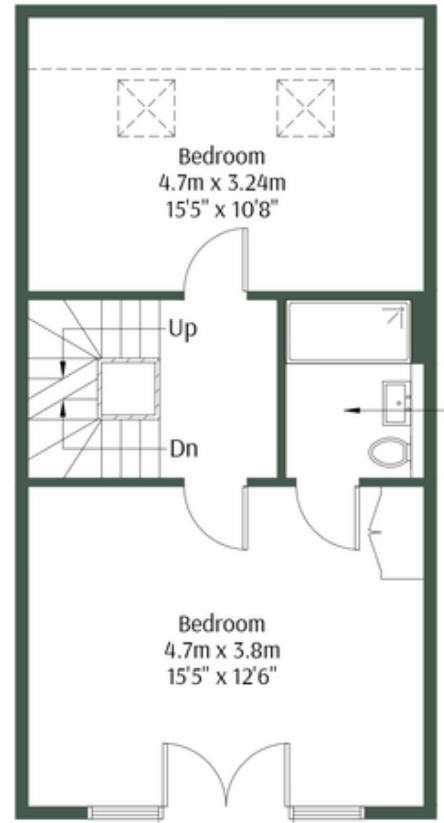
Approx Gross Internal Area = 141.9 sq.m / 1527 sq.ft

Restricted head height = 5.2 sq.m / 56 sq.ft

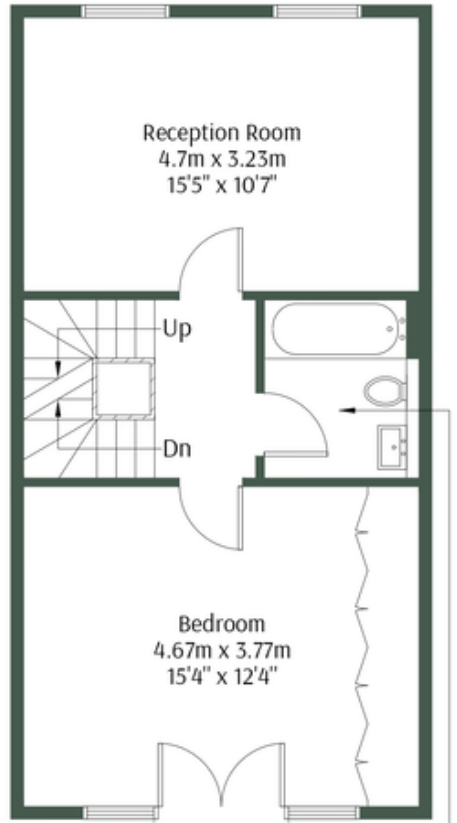
Total = 147.1 sq.m / 1583 sq.ft



Third Floor



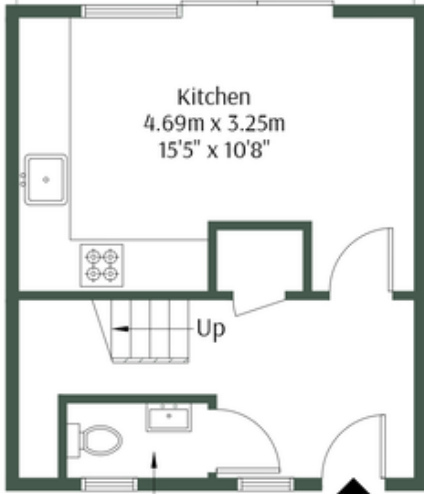
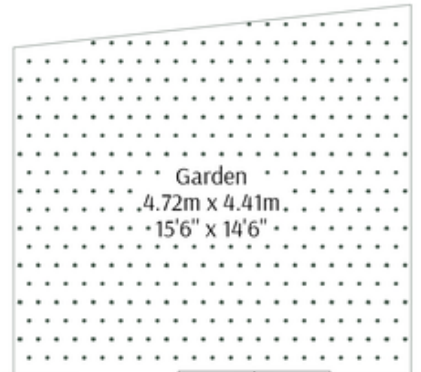
Second Floor



First Floor

Bathroom
2.15m x 1.84m
7'1" x 6'0"

Ensuite
2.11m x 1.64m
6'11" x 5'5"



Ground Floor

WC
1.68m x 0.89m
5'6" x 2'11"



The Floor plan is not to scale and measurements and areas shown are approximate and therefore should be used for

MONEY LAUNDERING REGULATIONS 2003: Intending purchasers will be asked to produce identification documentation at a later stage and we would ask for your co-operation in order that there will be no delay in agreeing the sale.

General: While we endeavour to make our sales particulars fair, accurate and reliable, they are only a general guide to the property and, accordingly, if there is any point which is of particular importance to you, please contact the office and we will be pleased to check the position for you, especially if you are contemplating travelling some distance to view the property.

Measurements: These approximate room sizes are only intended as general guidance. You must verify the dimensions carefully before ordering carpets or any built-in furniture.

Services: Please note we have not tested the services or any of the equipment or appliances in this property, accordingly we strongly advise prospective buyers to commission their own survey or service reports before finalising their offer to purchase.