



Apt 5 The Vault, 25 New Street, St. Helier, Jersey
£525,000

BROADLANDS
FINDING YOU A HOME SINCE 1972

Apartment 5 The Vault, 25 New Street

St. Helier, Jersey

- Stunning new development
- Spacious 2 bedroom apartment 820 sq. ft
- 1st floor with lift access
- Large sunny balcony
- Professional finish throughout
- Modern open plan living area
- Convenient Town location
- Stylish new kitchen and bathroom
- Call Doug on 07700702585 or doug@broadlandsjersey.com



Apartment 5 The Vault, 25 New Street

St. Helier, Jersey

Stunning first floor, spacious two bedroom apartment with a great size balcony. The Vault is a high-quality, new development in the heart of St Helier. Everything about it has been carefully thought out giving you a professional build and beautiful furnishings throughout. With lift access and in a convenient location ideal for all the amenities St Helier provides.

The apartment features a spacious open-plan living area with a fully integrated kitchen, complete with a range of appliances, and patio doors that open onto the sun terrace. It includes two generously sized double bedrooms, one with patio doors leading to the sun terrace, a house bathroom, a utility cupboard, and an additional large storage cupboard. Although, there is no designated parking available, you are eligible for resident parking and close to many states car parks with season tickets available at a reasonable price. There is no onward chain, just move in!



**Living**

Large open plan living area, with fully integrated kitchen with full range of appliances. Large storage cupboard and utility cupboard.

Sleeping

Two double bedrooms, one with patio doors opening onto the balcony. House bathroom with shower over bath.

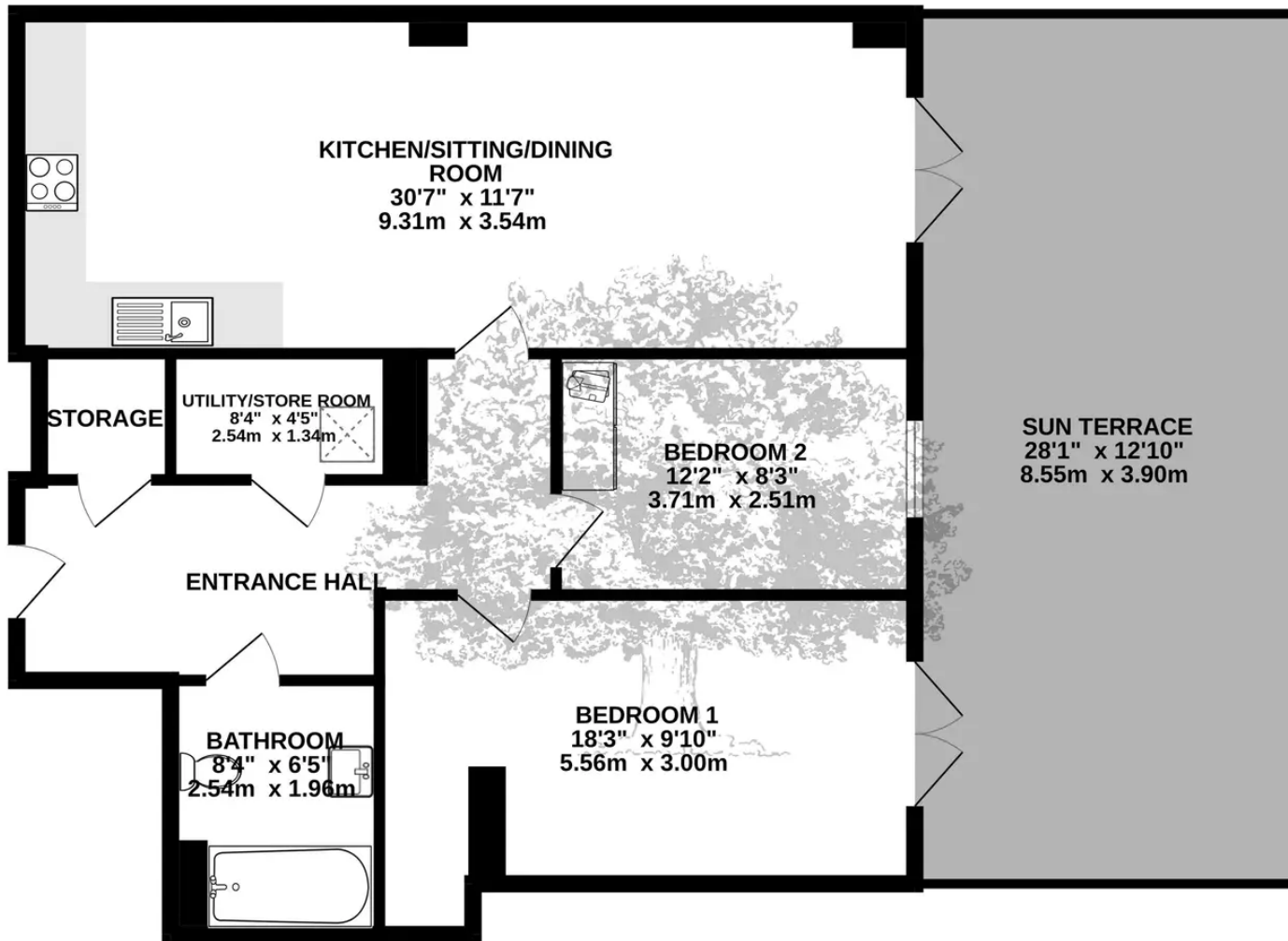
Services

All main services. Service charges £131.76 pcm, Rudwin property management.





FIRST FLOOR
820 sq.ft. (76.2 sq.m.) approx.



TOTAL FLOOR AREA : 820 sq.ft. (76.2 sq.m.) approx.

Whilst every attempt has been made to ensure the accuracy of the floorplan contained here, measurements of doors, windows, rooms and any other items are approximate and no responsibility is taken for any error, omission or mis-statement. This plan is for illustrative purposes only and should be used as such by any prospective purchaser. The services, systems and appliances shown have not been tested and no guarantee as to their operability or efficiency can be given.
Made with Metropix ©2024



Broadlands

Broadlands Estates, Library Place - JE2 3NL

01534 880770 • enquiries@broadlandsjersey.com • www.broadlandsjersey.com/

BROADLANDS

FINDING YOU A HOME SINCE 1972