



Millfield Road, Chorley

£295,000



Glorious four bedroom semi detached property with versatile accommodation in a popular residential area in the catchment area for excellent schools and within easy walking distance of Chorley town centre and the beautiful Astley Park. To the front the three car driveway leads up to the main entrance. Step into the welcoming hallway and from there to the heart of the house. The elegant kitchen comprises a range of wall and base units with integrated appliances including Neff double electric oven and grill, refrigerator, freezer and washing machine. Leading off is plenty of space for dining and comfortable furniture depending on whether you want formal or informal as well as the discrete living room. Completing the ground floor is the snug which also makes an excellent home office. Two sets of patio doors open to the garden and the lower terrace with shed to the side. A pathway leads past the lawn through the pergola covered with a fruiting vine to the upper terrace. With raised beds and mature planting this is a delightful space in which to relax and entertain. To the first floor are two good sized doubles with the larger to the rear overlooking the garden, a comfortable single currently used as an office and the bathroom comprising electric shower in cubicle, floating wash hand basin, wc and ladder heated towel rail. A second set of stairs leads to bedroom three and an elegant bathroom comprising bath with central Fawcett, floating wash hand basin, wc and ladder heated towel rail. Combine this with the snug and you have discrete accommodation within the main house. With over 1160 square feet on offer and ready to move in to, this is a perfect family home.



Glorious four bedroom semi detached property with versatile accommodation in a popular residential area in the catchment area for excellent schools and within easy walking distance of Chorley town centre and the beautiful Astley Park.

Council Tax band: C

Tenure: Freehold

- Spacious four bedroom property
- Beautifully presented
- Sought after location
- Versatile accommodation
- Large rear garden
- Plenty of parking



Eccleston Branch

265 The Green, Eccleston, PR7 5TF
01257 451673

Coppull Branch

244 Spendmore Lane, Coppull, PR7 5DE
01257 794588

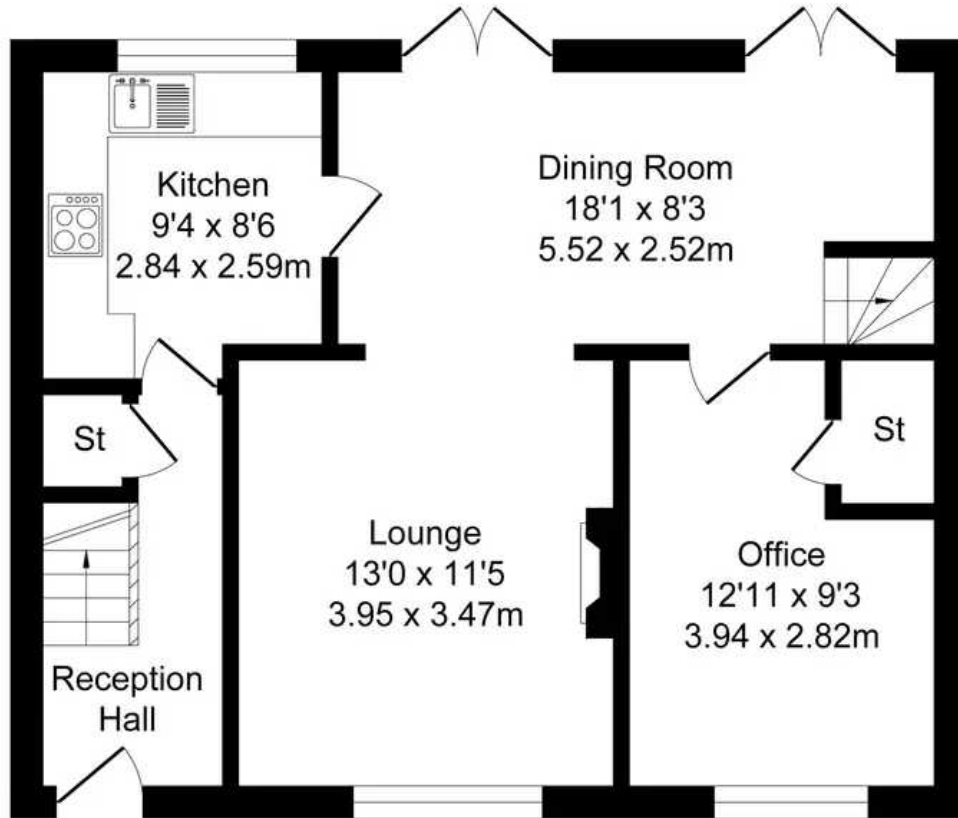
www.hometruthslancs.co.uk
office@hometruthslancs.co.uk



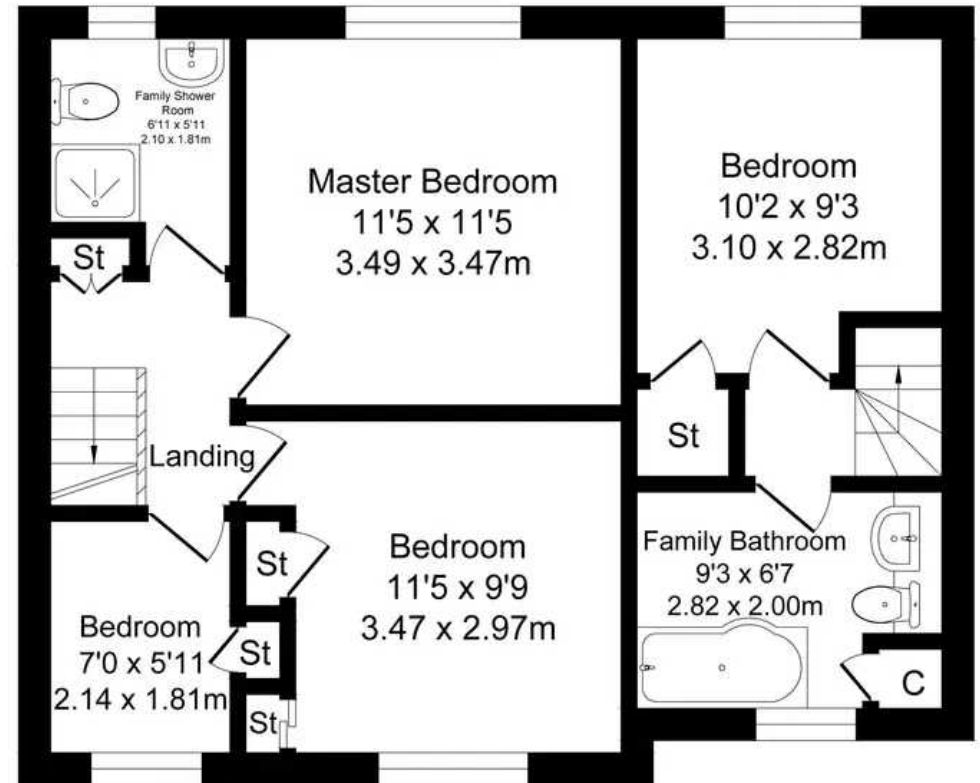
Millfield Road

Total Approx. Floor Area 1160 Sq.ft. (107.8 Sq.M.)

Surveyed and drawn by Lens Media for illustrative purposes only. Not to scale. Whilst every attempt was made to ensure the accuracy of the floor plan, all measurements are approximate and no responsibility is taken for any error.



Ground Floor
Approx. Floor Area 587 Sq.Ft
(54.5 Sq.M.)



First Floor
Approx. Floor Area 574 Sq.Ft
(53.3 Sq.M.)