

Cardwell Close, Blackpool

Offers Over £200,000

Cardwell Close

Blackpool

Nestled in a tranquil neighbourhood, this charming 3-bedroom semi-detached house built in 2022 offers a comfortable and modern living experience. The ground floor features a welcoming hallway leading to a spacious lounge, an open plan kitchen/diner ideal for hosting gatherings, and a convenient ground floor WC. Upstairs, three well-proportioned bedrooms await, with the master bedroom boasting an en-suite for added privacy, and a family bathroom featuring a sleek 3-piece suite. The property has been meticulously maintained, with a recent renovation of the bathroom and new fencing installed in the rear garden, providing a secure and private outdoor space perfect for relaxation and entertaining.

Externally, the property boasts off-road parking to the front, ensuring hassle-free parking for residents and guests. The fully enclosed rear garden offers a peaceful retreat, with a well-maintained lawn and a patio area, perfect for al-fresco dining or unwinding after a long day. A must-see for those seeking a modern home with both indoor comfort and outdoor serenity.

Council Tax band: C

Tenure: Freehold

- Property Built in 2022
- Hallway, Lounge, Open Plan Kitchen/Diner, GF WC
- 3 Bedrooms, en-suite to the master, 3 piece suite family Bathroom
- Bathroom renovated
- New fencing in rear garden





Hallway
7' 4" x 3' 10" (2.24m x 1.18m)

Lounge
16' 7" x 10' 11" (5.05m x 3.34m)

Kitchen-Diner
10' 3" x 14' 4" (3.13m x 4.37m)

GF WC
5' 0" x 3' 1" (1.53m x 0.95m)
Downstairs WC

Landing
3' 11" x 6' 4" (1.19m x 1.93m)
Landing

Bedroom 1
10' 2" x 10' 11" (3.09m x 3.33m)

En-suite
6' 9" x 2' 10" (2.05m x 0.87m)

Bedroom 2
10' 1" x 7' 2" (3.07m x 2.18m)

Bedroom 3
6' 11" x 7' 1" (2.12m x 2.16m)

Bathroom
5' 8" x 7' 8" (1.73m x 2.34m)







FRONT GARDEN

Off road parking to the front

REAR GARDEN

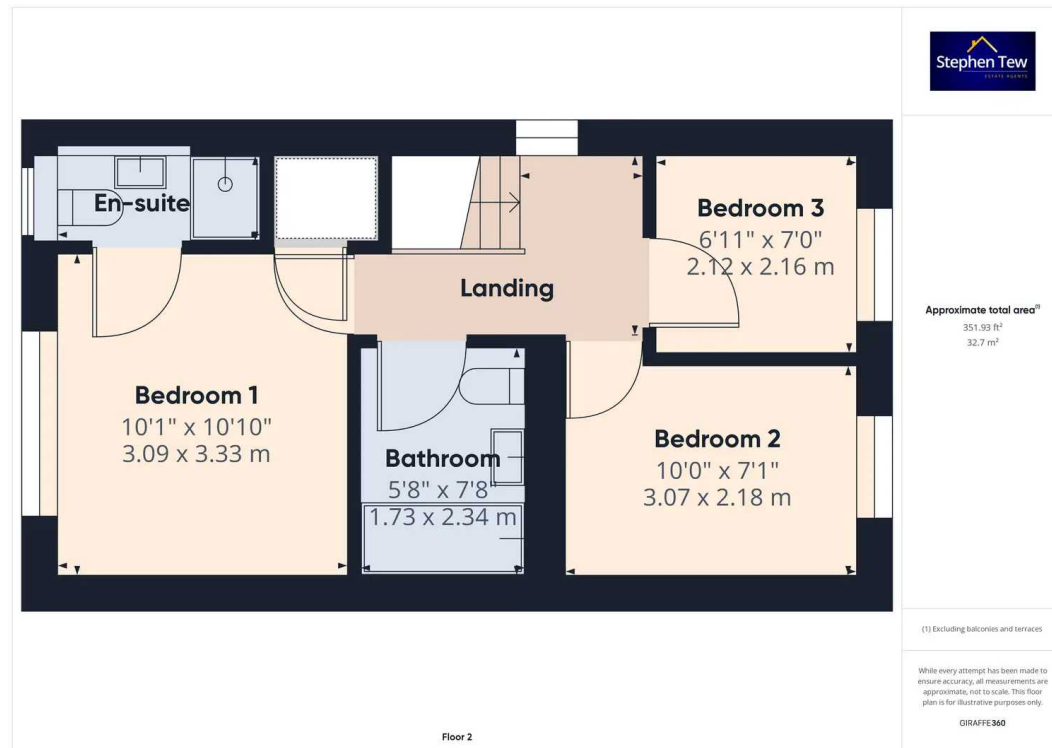
Enclosed Rear Garden with laid to lawn and patio area

DRIVEWAY

2 Parking Spaces

Driveway







Stephen Tew Estate Agents

Stephen Tew Estate Agents, 132 Highfield Road - FY4 2HH

01253 401111

info@stephentew.co.uk

www.stephentew.co.uk

