



16 Beech Mount, Ramsgreave

£180,000 Freehold

SEMI DETACHED TWO BEDROOM TRUE BUNGALOW IN BROWNHILL. This homely property has been well maintained by the current owners and offers the potential to make your own. In the lovely location of Brownhill, true bungalows are very rarely available which makes the proposition not one to be missed

Council Tax band: C

Tenure: Freehold



Nestled in the desirable Brownhill location, this charming two bedroom bungalow presents a rare opportunity to acquire a property in good condition with the potential to personalise and modernise to create your dream downsize. The accommodation comprises two well-proportioned bedrooms, a spacious living area, a fully equipped kitchen, and a family bathroom. The property also benefits from a detached single garage with power and lighting, offering ample storage space or the possibility for conversion. With a council tax band C rating and being offered with no onward chain, this bungalow is ready for its new owner to move in and start making memories.

Stepping outside, the bungalow boasts a generous garden, ideal for outdoor entertaining and relaxation. Having been mostly paved, there are plentiful seating areas and places for garden pots while enjoying the low maintenance aspect on offer. The property is conveniently situated within walking distance to local shops, providing easy access to every-day conveniences. Less than 100 metres away, residents can find a bus stop, perfect for those who rely on public transport. The Brownhill location further enhances the appeal of this property, offering plenty of local amenities such as shops, hairdressers and a train station, ensuring a convenient lifestyle for its future occupants.



Entrance

uPVC double glazed front door and window, ceramic tiled flooring, storage cupboard housing meters, panel radiator, phone point

Lounge

Carpet flooring, gas fire with marble hearth and wood surround, two panel radiators, TV point, phone point, uPVC double glazed window

Kitchen Diner

Range of fitted wall and base units with contrasting worksurfaces, electric cooker, extractor fan, washing machine, stainless steel sink and drainer, vinyl flooring, single glazed wood frame window and door to sun room, panel radiator

Sun Room

Carpet flooring, uPVC double glazed door windows and door, panel radiator, TV point

Bedroom 1

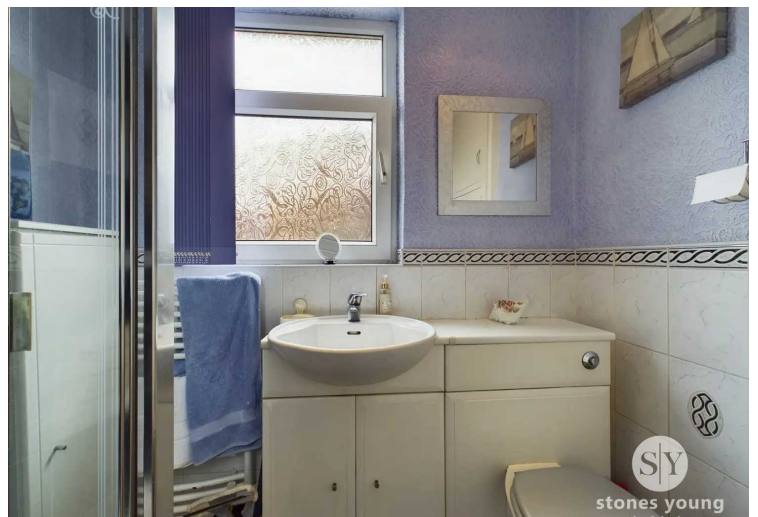
Carpet flooring, fitted wardrobes, single glazed wooden framed window, panel radiator, TV point

Bedroom 2

Carpet flooring, fitted wardrobes, storage cupboard, uPVC double glazed window, panel radiator

Bathroom

Three piece suite in white with electric shower enclosure, sink, wc, storage cupboard housing boiler, heated towel radiator, uPVC double glazed frosted window





Approximate total area⁽¹⁾
807.47 ft²

(1) Excluding balconies and terraces

While every attempt has been made to ensure accuracy, all measurements are approximate, not to scale. This floor plan is for illustrative purposes only.

GIRAFFE360

You can include any text here. The text can be modified upon generating your brochure.