



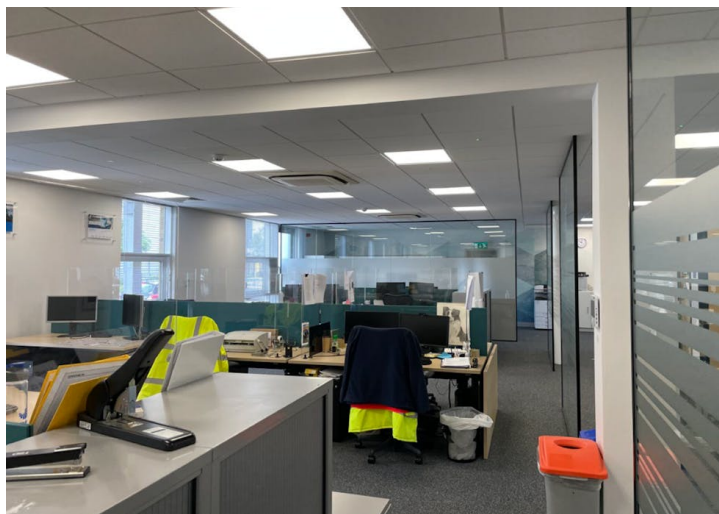
Superb quality self-contained ground and first floor offices.

- High quality, self contained offices
- 33 car parking spaces
- Full access raised floors
- Suspended ceilings
- LED lighting
- Meeting rooms

487-488 Ipswich Road

Slough, SL1 4EP

**AVISON
YOUNG**



Summary

Available Size 3,714 to 7,449 sq ft / 345.04 to 692.03 sq m

Rent £22 per sq ft

Rates Payable £9.21 per sq ft based on 2024 valuation

Service Charge N/A

Car Parking N/A

EPC C

Location

The offices are situated on the popular Ipswich Road and within easy walking distance of both local amenities and the main A4/ Bath Road. The location is ideal for access to M4 and national road network, as well as rail connections to Central London and Heathrow Airport.

Property Highlights

Accommodation comprises 7,449 sq ft of office space over the ground and first floor and can be let as one building or two separate, self-contained units. The property benefits from 33 parking spaces, suspended ceilings and raised access floors, and male and female WCs on both floors. The building further benefits from an established and well-managed estate including 24-hour CCTV and security team and on-site customer care.

Accommodation

The accommodation comprises the following areas:

| Name | sq ft | sq m | Availability |
|--------------|--------------|---------------|--------------|
| Unit - 487 | 3,714 | 345.04 | Available |
| Unit - 488 | 3,735 | 346.99 | Available |
| Total | 7,449 | 692.03 | |



Angus Malcolmson

020 7911 2763 | 07836 627 477

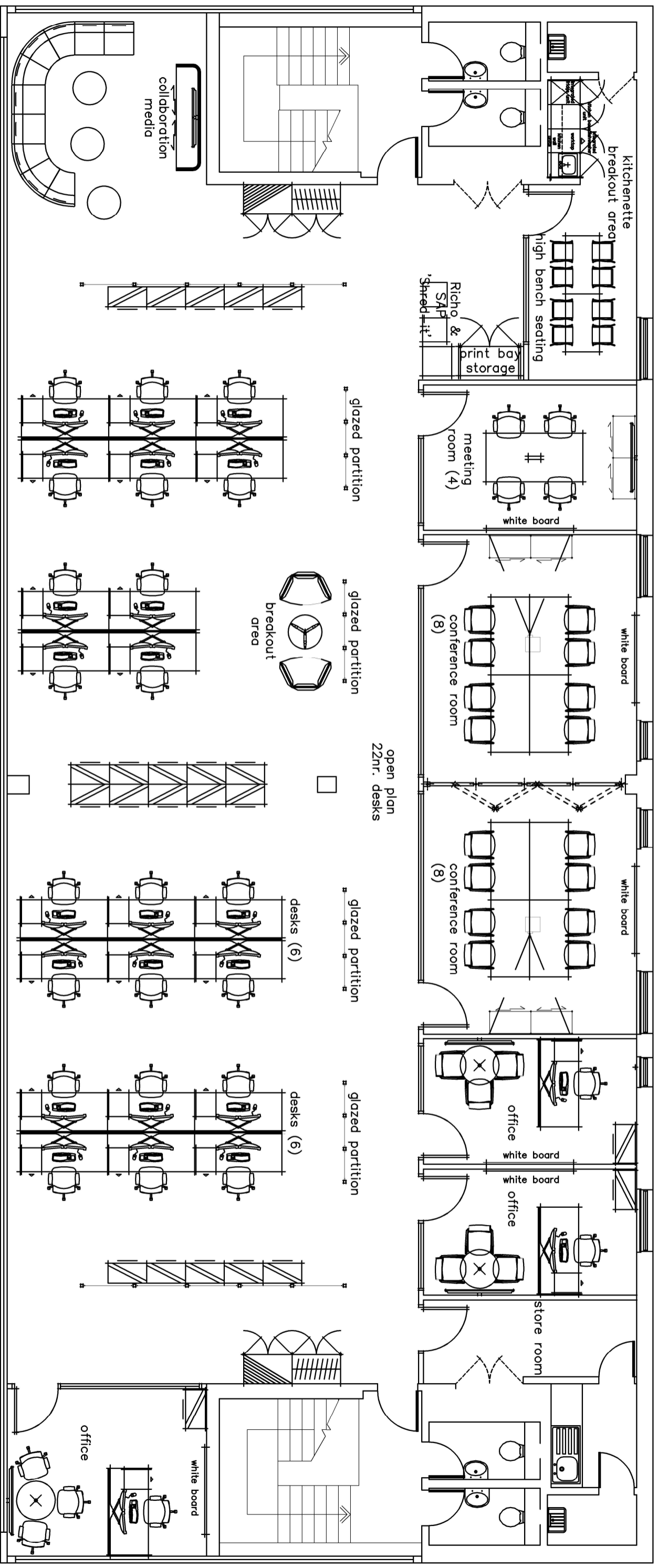
angus.malcolmson@avisonyoung.com



Amy Woodthorpe

07887801762 | 07887801762

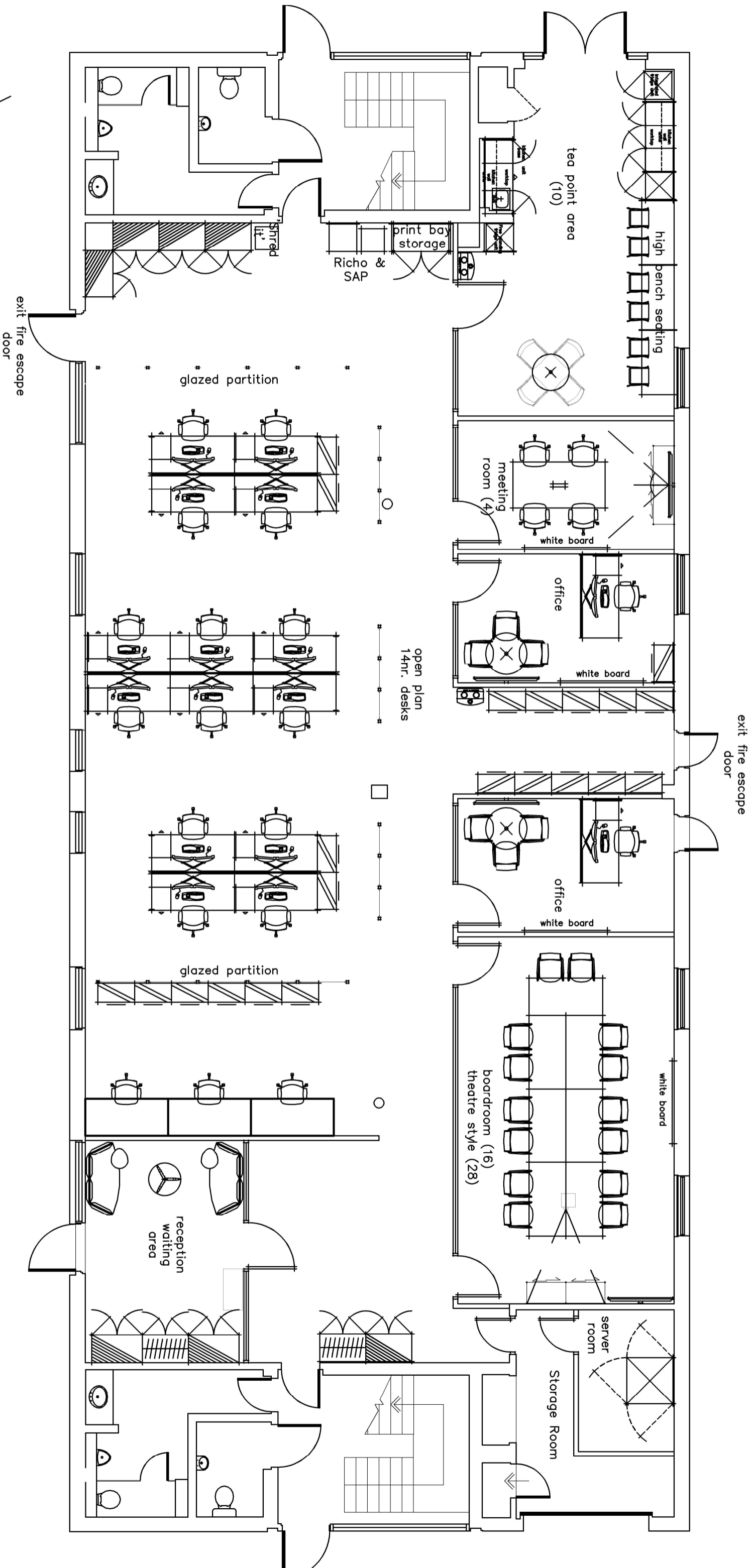
Amy.woodthorpe@avisonyoung.com



FIRST FLOOR

487-8 Ipswich Road

As Installed Furniture Layout 14/12/20



GROUND FLOOR

487-8 Ipswich Road

As Installed Furniture Layout 14/12/20