

To Let 2 bed flat



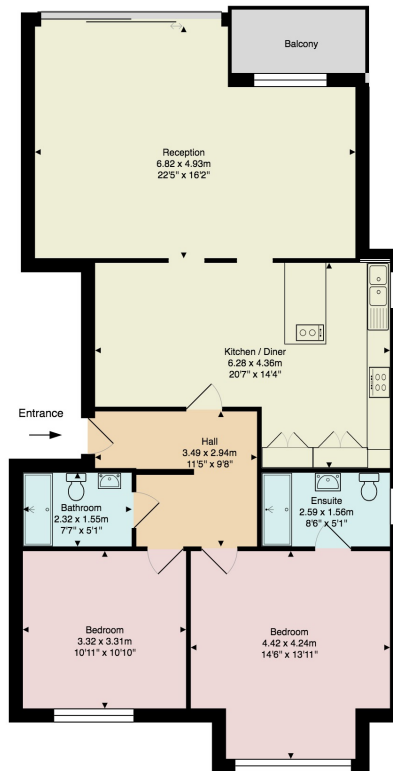
- › LUXURY 2 BED 2 BATHROOM FLAT
- › 2ND FLOOR WITH LIFT
- › LARGE LOUNGE
- › FITTED KITCHEN
- › MODERN FLAT

DREAMVIEW ESTATES ARE PRIVILEGED TO OFFER TO THE MARKET A 2 BEDROOM 2 BATHROOM FLAT IN THIS STUNNING NEW DEVELOPMENT OF 8 EXTREMELY SPACIOUS LUXURY FLATS WITH A LIFT, BUILT TO THE HIGHEST SPECIFICATION WITH SECURITY AND ALARMS





23/25 Woodstock Road NW11 8ES
Flat 6



Fl Floor

Approx. Gross Internal Area: 100.9 m² ... 1086 ft² (excluding balcony)

All measurements and areas are approximate only.
Dimensions are not to scale. This plan is for guidance
only and must not be relied upon as a statement of fact.
(c) Peninsula Surveys Ltd

NOBLE HOUSE, WOODSTOCK ROAD, NW11 8ES

*STUNNING MODERN DEVELOPMENT OF EXTREMELY SPACIOUS LUXURY FLATS WITH A LIFT, BUILT TO THE HIGHEST SPECIFICATION WITH SECURITY AND ALARMS

*BEING IN A PRIME LOCATION OF GOLDERS GREEN OF WOODSTOCK ROAD, IT IS IN EASY WALKING DISTANCE OF THE SHOPS AND TRANSPORT

*SPECIFICATIONS INCLUDE:-

*LIFT

*BESPOKE FITTED KITCHENS FITTED WITH ALL APPLIANCES

*SHOWER ROOMS HAVE ITALIAN TILING

*UNDER FLOOR HEATING (SEPARATE ROOM CONTROLS)

*LED STRIP LIGHTING

*ALL FLATS ALARMED

*VIDEO ENTRYPHONE WITH CCTV

*AIR CONDITIONING

*FLAT 6 IS ON THE 2ND FLOOR WITH 11148 SQ FT/ 106 SQ MT WITH GOOD SIZE ACCOMMODATION

*THERE IS LARGE 22' X 16' RECEPTION

*THERE IS A SEPARATE DINING / KITCHEN AND 2 BEDROOMS (1 WITH EN SUITE BATHROOM)



34 Golders Green Road, London NW11 8LL

murray@dreamviewestates.co.uk

020 8455 0055

best
agent

AVAILABLE MID JULY



34 Golders Green Road, London NW11 8LL

murray@dreamviewstates.co.uk

020 8455 0055

best
agent