

Scalpcliffe Road

Stapenhill, Burton-on-Trent, DE15 9AA

John 
German





MONT-BLANC

Scalpcliffe Road

Stapenhill, Burton-on-Trent, DE15 9AA

£275,000

A superb character semi detached with a stunning modernised interior with highlights including a light and spacious lounge, upgraded dining kitchen, three bedrooms, bathroom and separate shower room plus landscaped gardens.

Situated in a part of Burton renowned for its character properties is this superb traditional semi detached home that has a superb blend of period features and modern finishes, ready to move into. Perfectly placed just a short distance away from the town centre and also within walking distance of riverside walks and The Elms pub.

Set behind a compact front garden, the entrance door opens into a hallway with quarry tiled floor and staircase to the first floor. On your right is the lounge that is filled with light courtesy of a deep bay front facing window and a rear facing picture window. The room has a focal point chimney breast with open fire and fitted cupboards either side.

Across the hall is a stunning open plan dining kitchen that has been refitted and upgraded into a social open place space, ideal for families and entertaining. The kitchen has a stylish range of units complemented by wooden block worktops over incorporating a sink and drainer, space for a range style cooker and space for further appliances. There is a side facing window and door into a utility/rear porch having a door out to the rear garden.

Also off the kitchen is a refitted ground floor shower room having a large walk-in tiled shower cubicle with glazed screens, vanity basin with tap and mirror over, WC, towel/radiator and decorative tiled floor.

On the first floor there are three bedrooms, two of which are excellent doubles and the third is a well proportioned third bedroom, currently used as a home office. Completing the accommodation is the bathroom with a freestanding roll top bath, WC, wash hand basin and partial wall tiling.

The rear garden offers a fantastic outdoor space with an extensive paved patio, shaped lawn and a raised deck. The timber shed is available by separate negotiation. Side gated access leads to the front.

Note: The property has Japanese knotweed that is currently under a treatment management plan. (RICS management category C). Please contact the office for further details.

Tenure: Freehold (purchasers are advised to satisfy themselves as to the tenure via their legal representative).

Property construction: Standard **Parking:** On road

Electricity supply: Mains **Water supply:** Mains **Sewerage:** Mains **Heating:** Gas
(Purchasers are advised to satisfy themselves as to their suitability).

Broadband type: FTTC. See Ofcom link for speed: <https://checker.ofcom.org.uk/>

Mobile signal/coverage: See Ofcom link <https://checker.ofcom.org.uk/>

Local Authority/Tax Band: East Staffordshire Borough Council / Tax Band B

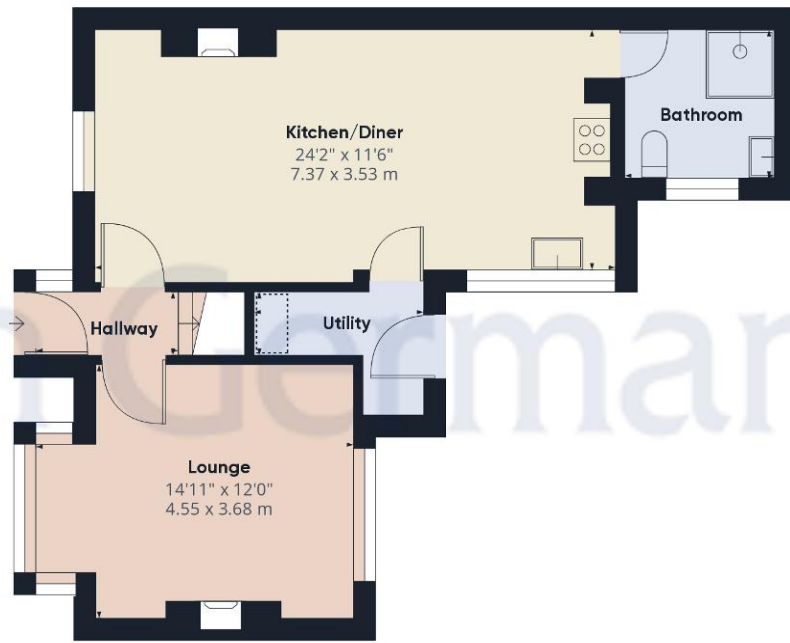
Useful Websites: www.gov.uk/government/organisations/environment-agency www.eaststaffsbcc.gov.uk

Our Ref: JGA/29012024

The property information provided by John German Estate Agents Ltd is based on enquiries made of the vendor and from information available in the public domain. If there is any point on which you require further clarification, please contact the office and we will be pleased to check the information for you, particularly if contemplating travelling some distance to view the property. Please note if your enquiry is of a legal or structural nature, we advise you to seek advice from a qualified professional in their relevant field.







Ground Floor



Floor 1

Approximate total area⁽¹⁾

1002.9 ft²

93.17 m²

Reduced headroom

4.52 ft²

0.42 m²

Excluding balconies and terraces

 Reduced headroom
(below 1.5m/4.92ft)

While every attempt has been made to ensure accuracy, all measurements are approximate, not to scale. This floor plan is for illustrative purposes only.

GIRAFFE360



Agents' Notes

These particulars do not constitute an offer or a contract neither do they form part of an offer or contract. The vendor does not make or give and Messrs. John German nor any person employed has any authority to make or give any representation or warranty, written or oral, in relation to this property. Whilst we endeavour to make our sales details accurate and reliable, if there is any point which is of particular importance to you, please contact the office and we will be pleased to check the information for you, particularly if contemplating travelling some distance to view the property. None of the services or appliances to the property have been tested and any prospective purchasers should satisfy themselves as to their adequacy prior to committing themselves to purchase.

Referral Fees

Mortgage Services - We routinely refer all clients to APR Money Limited. It is your decision whether you choose to deal with APR Money Limited. In making that decision, you should know that we receive on average £60 per referral from APR Money Limited.

Conveyancing Services - If we refer clients to recommended conveyancers, it is your decision whether you choose to deal with this conveyancer. In making that decision, you should know that we receive on average £150 per referral.

Survey Services - If we refer clients to recommended surveyors, it is your decision whether you choose to deal with this surveyor. In making that decision, you should know that we receive up to £90 per referral.

AWAITING EPC MEDIA



John German

129 New Street, Burton-On-Trent, Staffordshire, DE14 3QW

01283 512244

burton@johngerman.co.uk

Ashbourne | Ashby de la Zouch | Barton under Needwood
Burton upon Trent | Derby | East Leake | Lichfield
Loughborough | Stafford | Uttoxeter

JohnGerman.co.uk Sales and Lettings Agent



