



Isla-Alexander

Isla Alexander, Lambourne House, Lambourne Crescent - CF14 5GL

07817727321 • lynne@isla-alexander.com • www.isla-alexander.com



21 Shurland Avenue

Leysdown-on-Sea, Sheerness

Charming 2-bed semi-detached bungalow in Leysdown, steps from the sea. Features conservatory, garage, double bedrooms, front & rear gardens. Modern comforts included. Ideal seaside retreat for tranquil living. No chain, ready to move in.

Council Tax band: B

Tenure: Freehold

EPC Energy Efficiency Rating:

EPC Environmental Impact Rating:

- Semi detached bungalow
- 2 Double bedrooms
- Garage and driveway
- Conservatory
- Close to sea and Leysdown village
- No chain
- Double glazing and central heating
- Front and rear gardens
- Cul-de-sac location





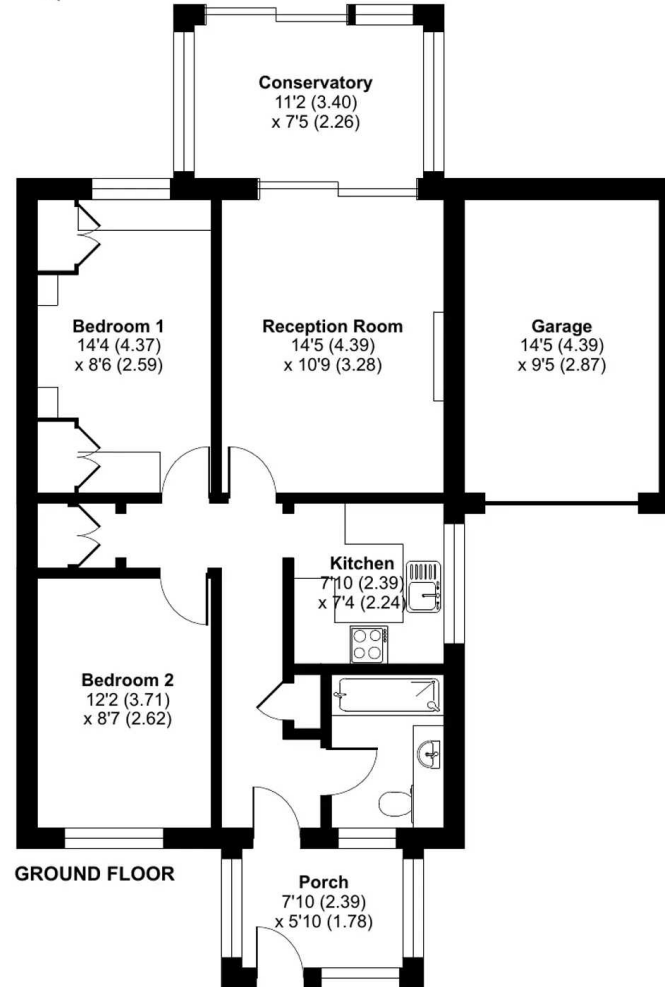
Shurland Avenue, Leysdown-on-Sea, Sheerness, ME12

Approximate Area = 756 sq ft / 70.2 sq m

Garage = 136 sq ft / 12.6 sq m

Total = 892 sq ft / 82.8 sq m

For identification only - Not to scale





Isla-Alexander

Isla Alexander, Lambourne House, Lambourne Crescent - CF14 5GL

07817727321

lynne@isla-alexander.com

www.isla-alexander.com