

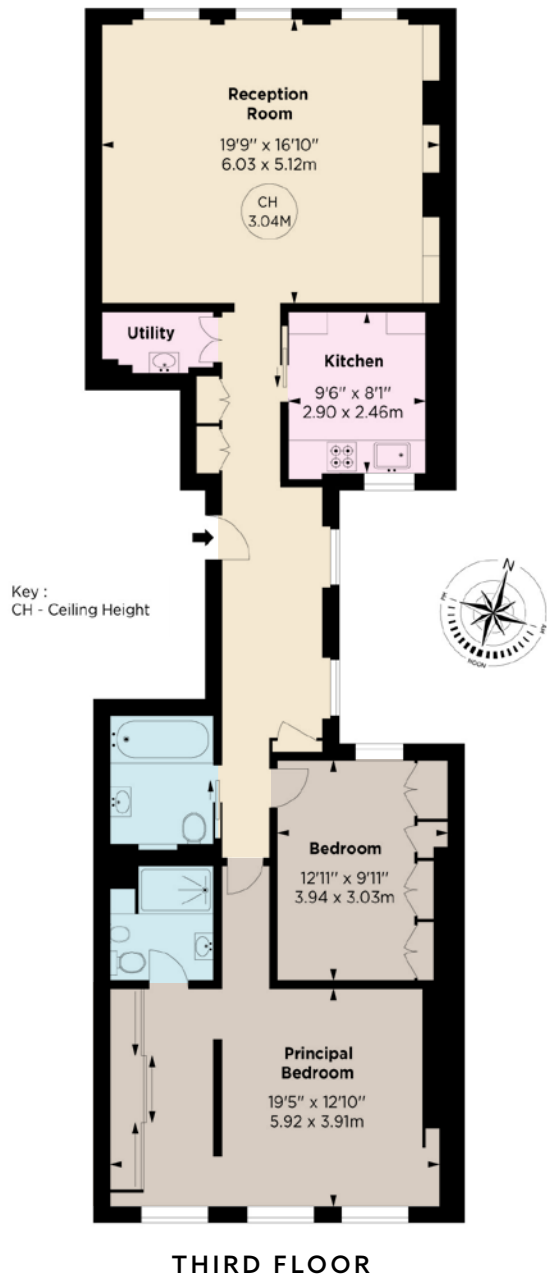


PONT STREET

KNIGHTSBRIDGE SW1X

APPROX. GROSS INTERNAL AREA
1,123 SQ FT / 104.33 SQ M

This floorplan is for guidance only and not for valuation purposes.



Charming two-bedroom, two-bathroom flat centrally located in Knightsbridge which has recently been renovated to a high standard with modern fixtures and tall ceilings.

The property features a spacious reception room with dining area, separate kitchen, principal bedroom with en suite bathroom and a sizable walk-in wardrobe. The second bedroom also offers ample storage space.

Positioned on Pont Street, a prestigious address in Knightsbridge, it's just a short walk from Harrods and the luxury shops on Sloane Street. Sloane Square's cafés, Pavilion Road, and Hyde Park are also nearby, making it a convenient and stylish place to live.

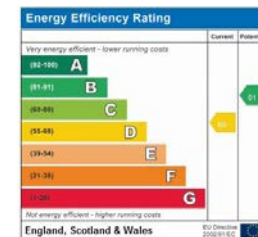


PRINCIPAL BEDROOM WITH ENSUITE BATHROOM • DOUBLE BEDROOM
 FAMILY BATHROOM RECEPTION ROOM • KITCHEN • UTILITY ROOM • LIFT

PRICE
 £2,200,000

TENURE
 Leasehold With 78 Years Remaining

SERVICE CHARGE
 TBC



NVP
 NICOLAS VAN PATRICK

6-8 MONTPELIER STREET,
 LONDON SW7 1EZ
 SALES | +44 (0)20 7581 8277
 LETTINGS | +44 (0)20 7590 1200
 info@nicolasvanpatrick.com
 www.nicolasvanpatrick.com