



54 Lewis Road

Sidcup
DA14 4NA

Freehold

Four bedroom semi detached chalet style house
2 reception rooms
Downstairs bathroom & upstairs cloakroom
Popular location in quiet residential road
Detached garage
Internal viewing recommended





FULL DESCRIPTION

Offered for sale is this 4 bedroom chalet house that sits in a popular location offering easy access to local schools, parks, shops and Sidcup station.

We feel the house would make a great family home and it briefly comprises of: entrance hall, lounge, dining room, kitchen, downstairs bathroom and bedroom four/study. To the first floor are three bedrooms and cloakroom.

Externally there is a rear garden, detached garage and ample off street parking to the front.

Internal viewing is highly recommended.



Directions

From our Sidcup office, turn left and proceed along Station Road, take the first left into Faraday Avenue, fifth turning on the right hand side into Wren Road and Lewis Road is the second turning on the right. Closest Stations: Albany Park (0.49 mi) Sidcup (0.58 mi) Bexley (1.46 mi) Closest Schools: Birkbeck Primary School (0.46 mi) Merton Court School (0.55 mi) Cleeve Park School (0.22 mi)

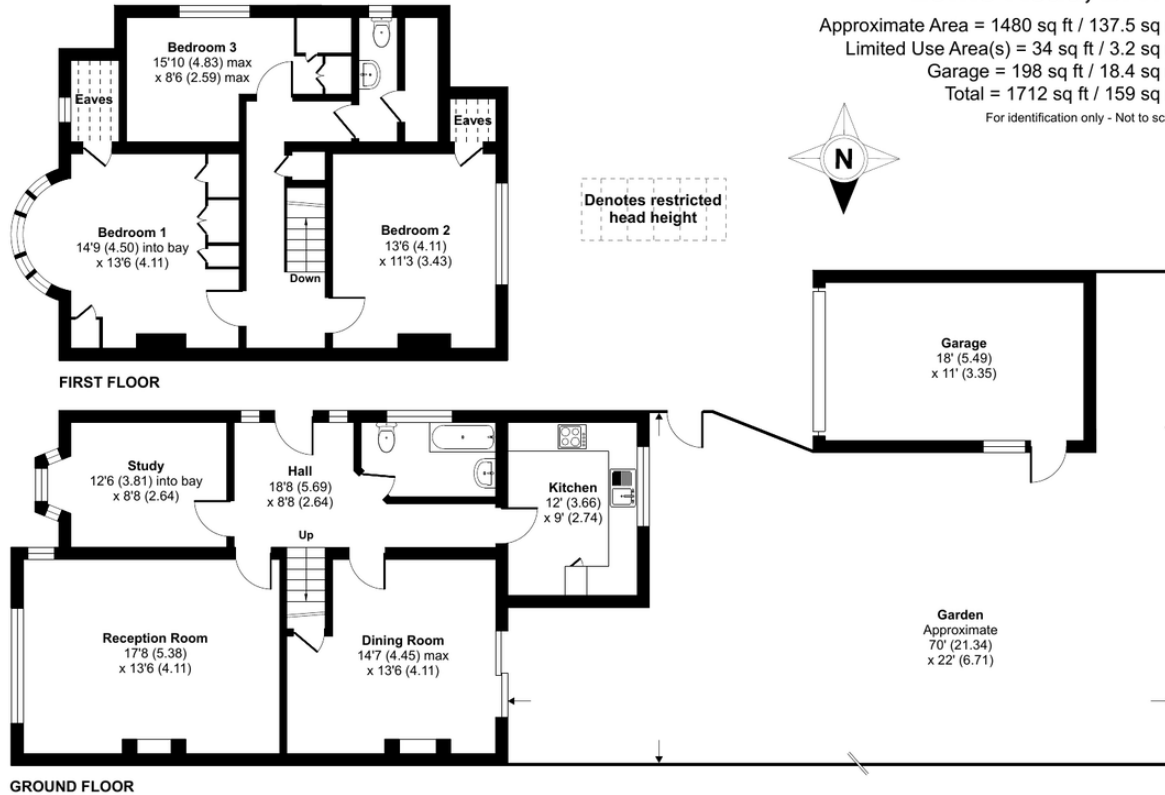


Local Authority
Council Tax Band
EPC Rating

Bexley London Borough Council
F
D

Lewis Road, DA14

Approximate Area = 1480 sq ft / 137.5 sq m
Limited Use Area(s) = 34 sq ft / 3.2 sq m
Garage = 198 sq ft / 18.4 sq m
Total = 1712 sq ft / 159 sq m
For identification only - Not to scale



Floor plan produced in accordance with RICS Property Measurement Standards incorporating International Property Measurement Standards (IPMS2 Residential). © ntrhcom 2024. Produced for Drewery. REF: 1134010

Drewery Property Consultants
128 Station Road
Sidcup
Kent
DA15 7AF

Contact
020 8269 6605
info@drewery.co.uk
www.drewery.co.uk

Agents Note: Whilst every care has been taken to prepare these particulars, they are for guidance purposes only. All measurements are approximate and are for general guidance purposes only and whilst every care has been taken to ensure their accuracy, they should not be relied upon and potential buyers/tenants are advised to recheck the measurements.