



**Coopers**

**Coopers**

7 Courtleet Road, Cheylesmore, Coventry CV3 5GS

Guide Price £230,000





## 7 Courtleet Road

Cheylesmore, Coventry

Spacious property with two reception rooms, three bedrooms, driveway, private garden, and rear garage access. Great potential for modernisation and personalisation.

Council Tax band: C

Tenure: Freehold

EPC Energy Efficiency Rating: D

- Spacious three bedroom home
- In need of modernisation but with lots of potential
- Two separate reception rooms
- Three good sized bedrooms
- First floor bathroom
- Garden with garage and rear access

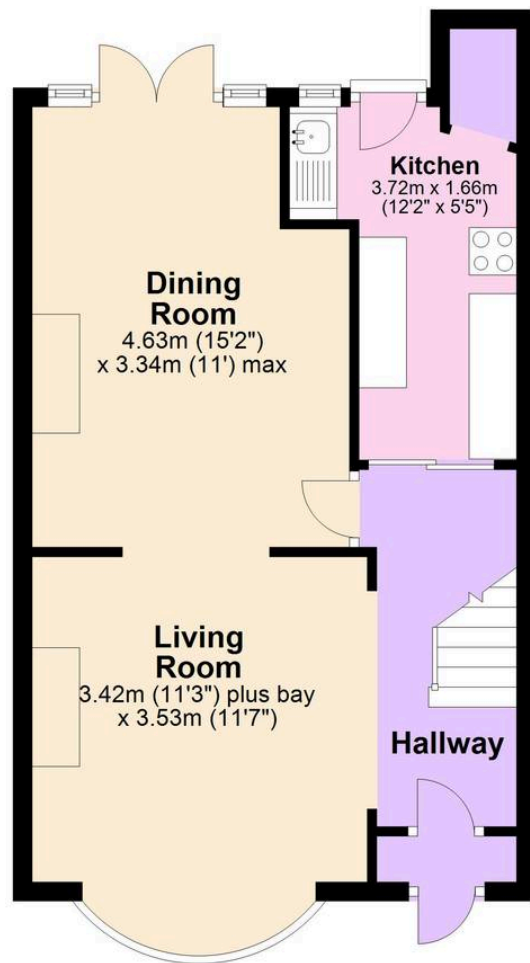






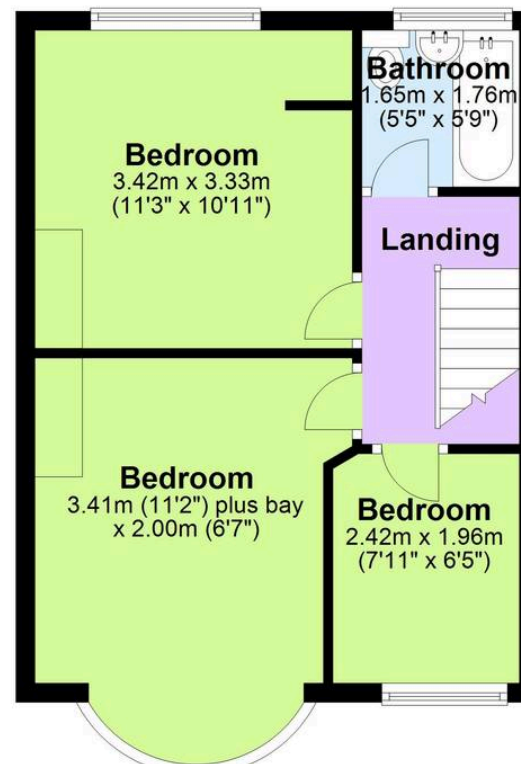
## Ground Floor

Approx. 42.6 sq. metres (458.7 sq. feet)



## First Floor

Approx. 35.9 sq. metres (386.2 sq. feet)



Total area: approx. 78.5 sq. metres (844.9 sq. feet)

This floor plan is for illustrative purposes only and should be used as such by any prospective purchaser. Whilst every attempt has been made to ensure the accuracy of this plan, measurements of doors, windows, rooms and other items are approximate and no responsibility is taken for any error, omission or mis-statement.  
Plan produced using PlanUp.

**Coopers Estate Agents**

Coopers, 22 New Union Street – CV1 2HN

**Coopers**

024 7655 2841 • [sales@coopersestateagents.com](mailto:sales@coopersestateagents.com) • [www.coopersestateagents.com/](http://www.coopersestateagents.com/)

Coopers Chartered Surveyors Ltd, 22 New Union Street, Coventry, West Midlands

CV1 2HN, 024 7655 2841, [sales@coopers-cov.com](mailto:sales@coopers-cov.com). Company Registration

Number: 6725089 / VAT number: 940 3555 34