



9 Gunton Church Lane, Lowestoft

Guide Price £500,000

9 Gunton Church Lane

Lowestoft, Lowestoft

****Guide price £500,000 to £550,000**** Located within the popular coastal town of Lowestoft, this executive detached house offers a unique opportunity to indulge in a lifestyle of luxury and comfort. Boasting ample space throughout with three reception rooms, one of which holds potential for a fifth bedroom, an open plan kitchen/diner with utility room, four generous bedrooms, ensuite to master, family bathroom and an incredible garden.

Council Tax band: D

Tenure: Freehold





9 Gunton Church Lane

Lowestoft, Lowestoft

****Guide price £500,000 to £550,000**** Located within the popular coastal town of Lowestoft, this executive detached house offers a unique opportunity to indulge in a lifestyle of luxury and comfort. Boasting ample space throughout with three reception rooms, one of which holds potential for a fifth bedroom, an open plan kitchen/diner with utility room, four generous bedrooms, ensuite to master, family bathroom and an incredible garden.

Location

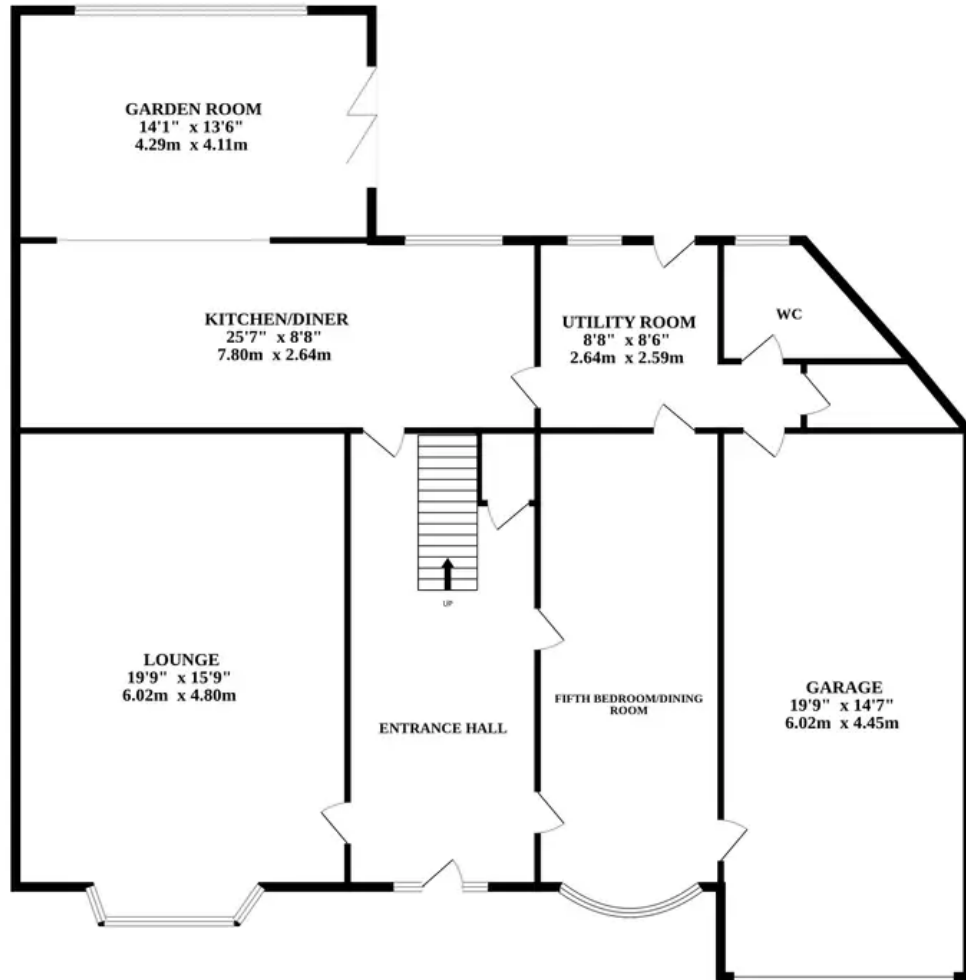
Lowestoft, located on the Suffolk coast, is the easternmost town in the United Kingdom. Renowned for its maritime heritage and expansive sandy beaches, it maintains an active fishing industry, which is evident in its bustling harbours and lively seafood markets. The town boasts a range of amenities, dining establishments, and entertainment venues that offer cultural experiences. Notable landmarks such as the Lowestoft Maritime Museum and Ness Point, marking the country's eastern extremity, enrich the town's historical tapestry. Moreover, Lowestoft is a gateway to the scenic Broads National Park, attracting outdoor enthusiasts with its picturesque waterways and coastal trails. With its blend of coastal charm and urban amenities, Lowestoft offers residents and visitors a distinctive seaside experience and modern conveniences.

Gunton Church Lane, Lowestoft

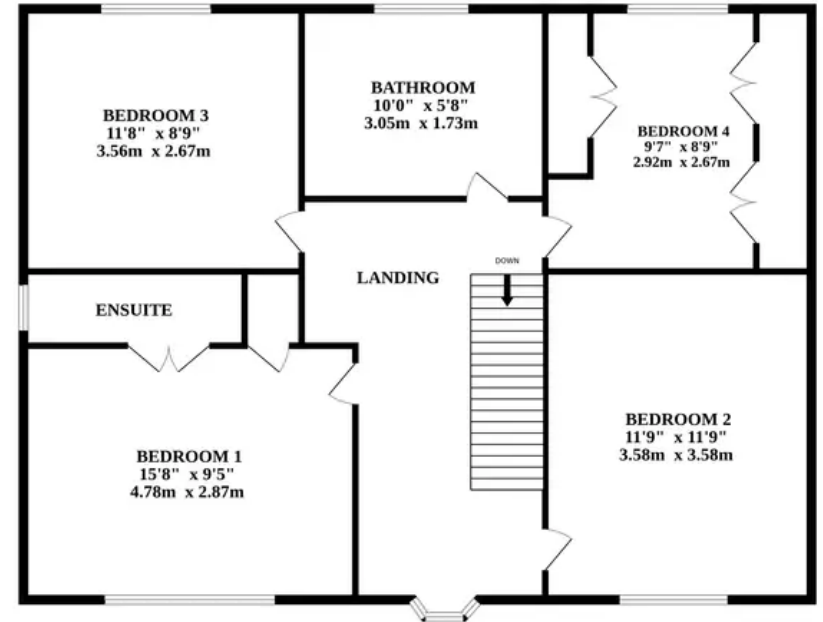
Upon entering this incredible home, you'll be greeted by a reception hallway with stairs to the



GROUND FLOOR



1ST FLOOR



Whilst every attempt has been made to ensure the accuracy of the floorplan contained here, measurements of doors, windows, rooms and any other items are approximate and no responsibility is taken for any error, omission or mis-statement. This plan is for illustrative purposes only and should be used as such by any prospective purchaser. The services, systems and appliances shown have not been tested and no guarantee as to their operability or efficiency can be given.
Made with Metropix ©2024