

28 Long Ley

Harlow, Harlow

Council Tax band: C

Tenure: Freehold

- CHAIN FREE
- POTENTIAL TO EXTEND
- GARDEN IN EXCESS OF 100 FEET
- SIDE ACCESS
- TWO DOUBLE BEDROOMS
- GAS CENTRAL HEATING



Entrance Hall

Lounge/ Diner

19' 6" x 11' 9" (5.94m x 3.57m)

Kitchen

10' 2" x 7' 11" (3.10m x 2.42m)

Utility Area

5' 11" x 8' 5" (1.80m x 2.56m)

Bedroom One

9' 10" x 17' 3" (3.00m x 5.27m)

Bedroom Two

9' 4" x 13' 3" (2.84m x 4.03m)

Bathroom

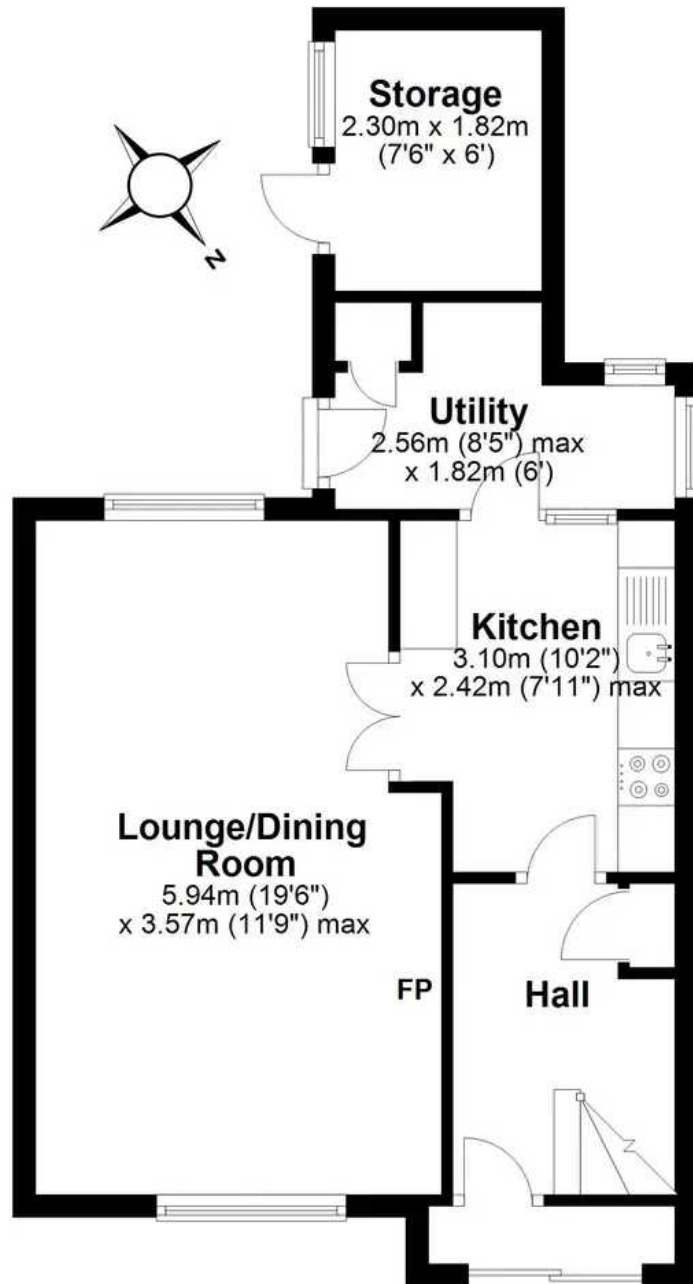
5' 6" x 7' 1" (1.67m x 2.17m)





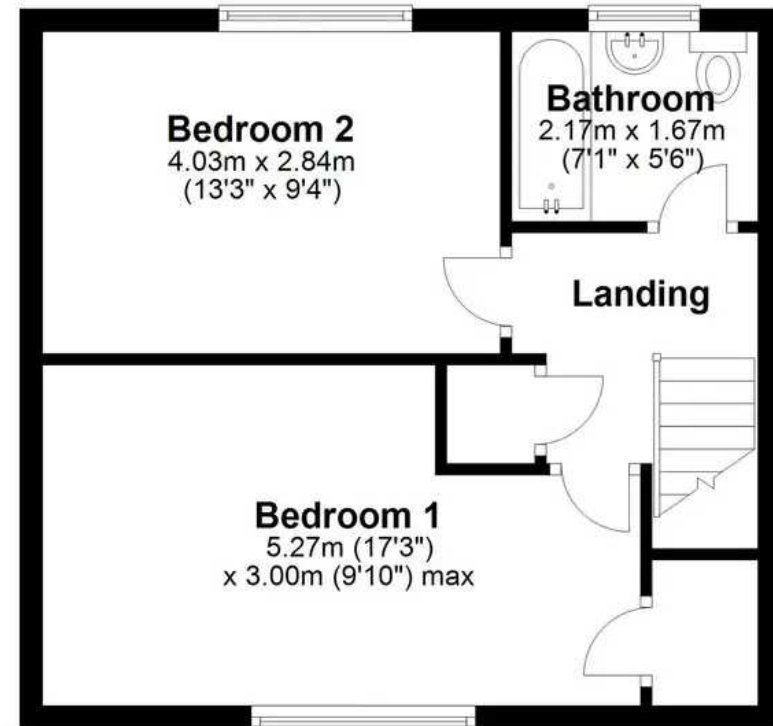
Ground Floor

Approx. 43.4 sq. metres (467.6 sq. feet)



First Floor

Approx. 37.7 sq. metres (405.4 sq. feet)



Total area: approx. 81.1 sq. metres (873.0 sq. feet)