



67 Eastern Avenue, Caister-On-Sea

£350,000

GUIDE PRICE: £350,000-£375,000. Situated in a prime location within walking distance to Caister beach, this impeccably presented four-bedroom property offers a truly exceptional living experience. Boasting an extension that has created additional versatile living space, this home is a rare gem in the property market.

Council Tax band: A

GUIDE PRICE: £350,000-£375,000. Situated in a prime location within walking distance to Caister beach, this impeccably presented four-bedroom property offers a truly exceptional living experience. Boasting an extension that has created additional versatile living space, this home is a rare gem in the property market.

Location

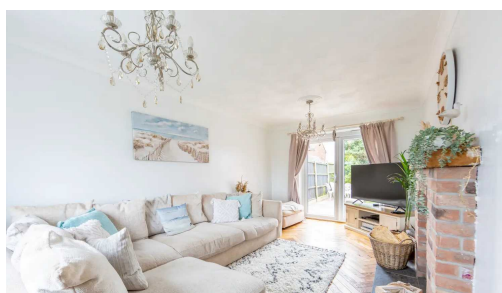
Caister-on-Sea, situated on the Norfolk coast in England, is a tranquil village renowned for its scenic seaside setting. With a long stretch of sandy beach, it offers opportunities for leisurely walks and relaxation by the North Sea. The village maintains a traditional atmosphere with its historic cottages and local amenities, including shops and eateries serving fresh seafood. Caister-on-Sea is notable for Caister Castle, a medieval fortress dating back to the 15th century, providing insight into the area's rich heritage. Nature enthusiasts can explore the nearby Norfolk Broads, a network of waterways abundant in wildlife. With its coastal beauty and historical landmarks, Caister-on-Sea provides a charming retreat for visitors and residents alike.



GUIDE PRICE: £350,000-£375,000. Situated in a prime location within walking distance to Caister beach, this impeccably presented four-bedroom property offers a truly exceptional living experience. Boasting an extension that has created additional versatile living space, this home is a rare gem in the property market.

Location

Caister-on-Sea, situated on the Norfolk coast in England, is a tranquil village renowned for its scenic seaside setting. With a long stretch of sandy beach, it offers opportunities for leisurely walks and relaxation by the



GUIDE PRICE: £350,000-£375,000. Situated in a prime location within walking distance to Caister beach, this impeccably presented four-bedroom property offers a truly exceptional living experience. Boasting an extension that has created additional versatile living space, this home is a rare gem in the property market.

Location

Caister-on-Sea, situated on the Norfolk coast in England, is a tranquil village renowned for its scenic seaside setting. With a long stretch of sandy beach, it offers opportunities for leisurely walks and relaxation by the North Sea. The village maintains a traditional atmosphere with its historic cottages and local amenities, including shops and eateries serving fresh seafood. Caister-on-Sea is notable for Caister Castle, a medieval fortress dating back to the 15th century, providing insight into the area's rich heritage. Nature enthusiasts can explore the nearby Norfolk Broads, a network of waterways abundant in wildlife. With its coastal beauty and historical landmarks, Caister-on-Sea provides a charming retreat for visitors and residents alike.

Eastern Avenue, Caister-on-Sea

As you enter, the stunning SEA views to the front immediately catch your eye, providing a picturesque backdrop to this executive residence. The fully enclosed and landscaped garden offers a serene place to unwind and entertain, surrounded by nature and tranquility.

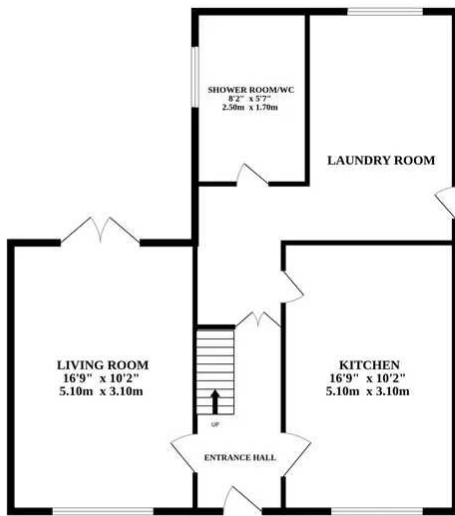
The heart of the home features a high-quality kitchen that provides a perfect blend of style and functionality. The adjacent laundry room adds a touch of convenience to everyday living. This property has been meticulously maintained and cared for, showcasing an unparalleled level of detail and craftsmanship. From the solid wood finishes to the thoughtful layout, every aspect of this home exudes elegance and sophistication.

The accommodation comprises four well-proportioned bedrooms, offering flexibility and space for all occupants. The master bedroom benefits from a luxurious ensuite, and a downstairs shower room, alongside a family bathroom, adds to the convenience and functionality of this residence.

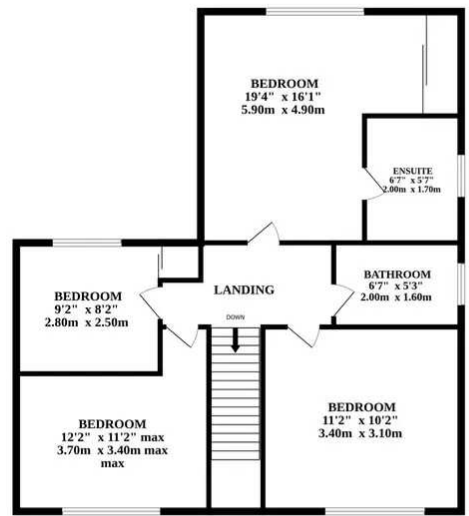
Parking will never be an issue, with ample parking space and a garage/outbuilding that provides storage and further potential. The driveway in front also offers plenty of off-road parking. The rear garden has been landscaped to include lawn and patio, making a lovely area to entertain and enjoy.



GROUND FLOOR



1ST FLOOR



Whilst every attempt has been made to ensure the accuracy of the floorplan contained here, measurements of doors, windows, rooms and any other items are approximate and no responsibility is taken for any error, omission or mis-statement. This plan is for illustrative purposes only and should be used as such by any prospective purchaser. The services, systems and appliances shown have not been tested and no guarantee as to their operability or efficiency can be given.
Made with Metropix ©2024

You can include any text here. The text can be modified upon generating your brochure.

You can include any text here. The text can be modified upon generating your brochure.

