



43 Jasmine Gardens, Bradwell

£230,000 Freehold

VENDOR HAS FOUND* Guide price: £230,000-£240,000. A charming three bedroom semi-detached house perfect for first time buyers! Ideal for families with spacious rooms, a modern kitchen, a garage, and a low maintenance garden. Located close to schools, parks, and amenities, offering a tranquil yet convenient lifestyle. Book a viewing today!

Council Tax band: B

Tenure: Freehold

VENDOR HAS FOUND*

Guide price: £230,000-£240,000. A charming three bedroom semi-detached house perfect for first time buyers! Ideal for families with spacious rooms, a modern kitchen, a garage, and a low maintenance garden. Located close to schools, parks, and amenities, offering a tranquil yet convenient lifestyle. Book a viewing today!

LOCATION

Known for its friendly atmosphere and picturesque surroundings, Bradwell provides a welcoming and family-friendly environment for individuals and families alike. With its close proximity to nearby schools, parks, and recreational facilities, residents of Jasmine Gardens can enjoy the benefits of a tight-knit community while remaining well-connected to essential services and leisure activities. Whether exploring the local parks or enjoying the convenience of nearby shops and restaurants, Jasmine Gardens in Bradwell presents an ideal location for those seeking a harmonious blend of comfort and convenience in a tranquil residential setting.

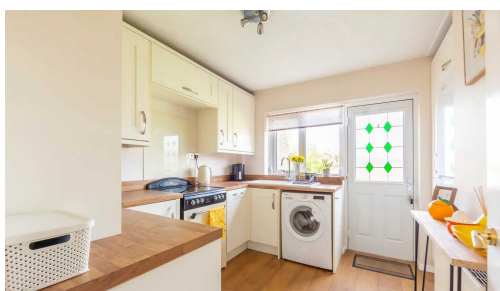
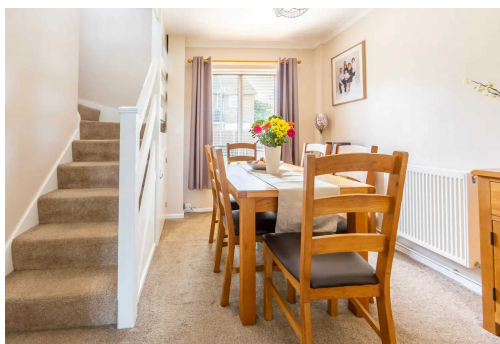


VENDOR HAS FOUND*

Guide price: £230,000-£240,000. A charming three bedroom semi-detached house perfect for first time buyers! Ideal for families with spacious rooms, a modern kitchen, a garage, and a low maintenance garden. Located close to schools, parks, and amenities, offering a tranquil yet convenient lifestyle. Book a viewing today!

LOCATION

Known for its friendly atmosphere and picturesque surroundings, Bradwell provides a welcoming and family-friendly environment for individuals



VENDOR HAS FOUND*

Guide price: £230,000-£240,000. A charming three bedroom semi-detached house perfect for first time buyers! Ideal for families with spacious rooms, a modern kitchen, a garage, and a low maintenance garden. Located close to schools, parks, and amenities, offering a tranquil yet convenient lifestyle. Book a viewing today!

LOCATION

Known for its friendly atmosphere and picturesque surroundings, Bradwell provides a welcoming and family-friendly environment for individuals and families alike. With its close proximity to nearby schools, parks, and recreational facilities, residents of Jasmine Gardens can enjoy the benefits of a tight-knit community while remaining well-connected to essential services and leisure activities. Whether exploring the local parks or enjoying the convenience of nearby shops and restaurants, Jasmine Gardens in Bradwell presents an ideal location for those seeking a harmonious blend of comfort and convenience in a tranquil residential setting.

JASMINE GARDENS

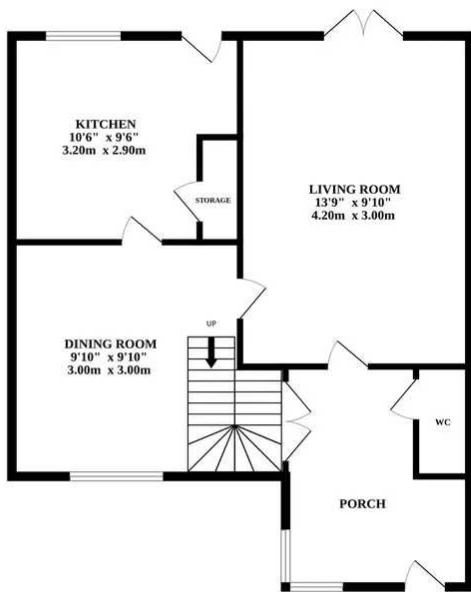
We are delighted to present this charming three bedroom semi-detached house in the sought-after village of Bradwell. Perfect for first-time buyers, this property boasts a bright and airy ambience throughout, creating a welcoming atmosphere. The well-equipped, contemporary kitchen is ideal for busy family life and offers a modern touch to the home. Two reception rooms offer a wealth of space throughout, ideal for hosting and entertaining with the lounge providing double doors directly into the garden. Upstairs, three sizeable bedrooms await. The family bathroom is also located on the first floor.

Externally, the property benefits from a low maintenance garden, providing a tranquil space to relax and entertain. Moreover, the presence of a garage and off-road parking ensures convenience for residents with vehicles. Situated just a short drive away from the beach, this property offers a desirable coastal lifestyle. Additionally, its proximity to amenities enhances practicality and accessibility for every-day needs.

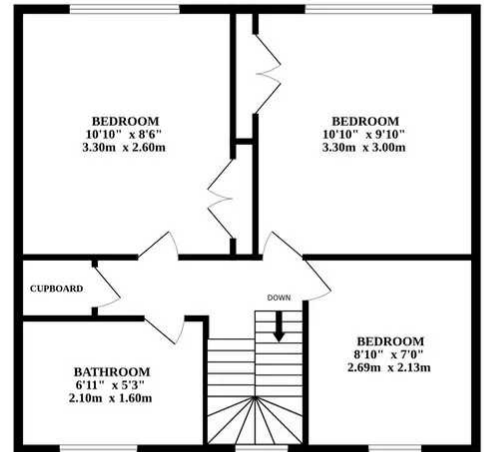
This property presents an excellent opportunity for those seeking a comfortable and convenient living experience in a highly sought-after location. Book your viewing today!



GROUND FLOOR



1ST FLOOR



Whilst every attempt has been made to ensure the accuracy of the floorplan contained here, measurements of doors, windows, rooms and any other items are approximate and no responsibility is taken for any error, omission or mis-statement. This plan is for illustrative purposes only and should be used as such by any prospective purchaser. The services, systems and appliances shown have not been tested and no guarantee as to their operability or efficiency can be given.
Made with Metropix ©2024

You can include any text here. The text can be modified upon generating your brochure.

You can include any text here. The text can be modified upon generating your brochure.

