



Hilltop Villa, Le Mont Pinel, St Helier
Asking £685,000

BROADLANDS
FINDING YOU A HOME SINCE 1972

Hilltop Villa, Le Mont Pinel

- Character home close to schools and colleges
- Two reception rooms
- Separate kitchen
- Two double bedrooms
- Large loft/study
- Working fireplace
- Enclosed garden
- Large external storage room
- Sole agent
- WhatsApp Don 07829 917172 /
don@broadlandsjersey.com



Hilltop Villa, Le Mont Pinel

A versatile house full of character located on a quiet road close to schools and colleges.

The accommodation comprises living room with exposed granite wall, functional fireplace, engineered wood flooring and shutters, dining room with fireplace, kitchen with a selection of appliances, two bedrooms, bathroom and versatile loft room suitable for use as a study or guest room.

Outside is an enclosed courtyard garden and good size shed suitable for storage. Although this property does not have any designated parking it's a short walk to town, and the shed is a perfect place to store electric bikes or similar.





Living

Living room with granite fireplace. Dining room with exposed granite wall and functional fireplace. Two windows to front with plantation shutters. Engineered wood flooring. Kitchen with fitted units and integrated appliances including hob, extractor, oven, microwave, fridge and dishwasher.

Sleeping

Two double bedrooms both with fitted wardrobes. Bathroom with four piece suite comprising bath, shower, basin and WC. Fully tiled walls and floor.

Outside

Enclosed patio style garden providing plenty of space for relaxing and alfresco dining. There is no designated parking with this property but a rental space should be available - ask for details.

Services

All mains. Gas central heating. Electric fuse board updated three years ago.

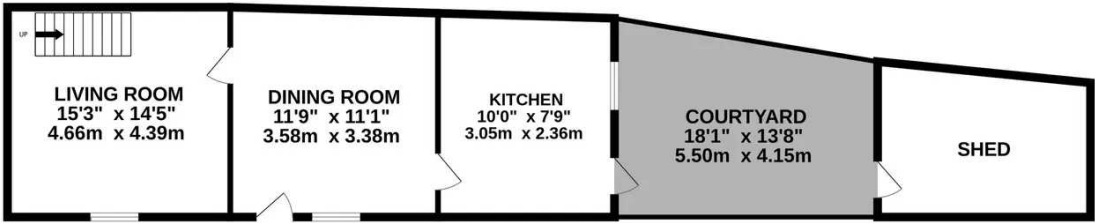
Education

The house is in the catchment area for Plat Douet primary and Le Rocquier secondary schools.

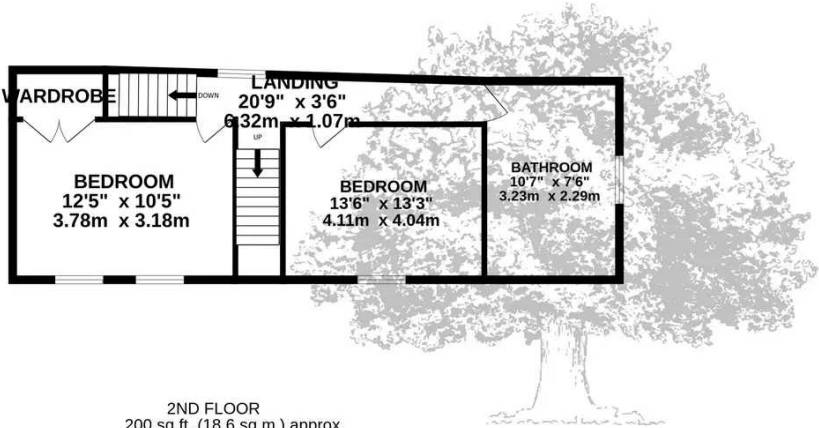




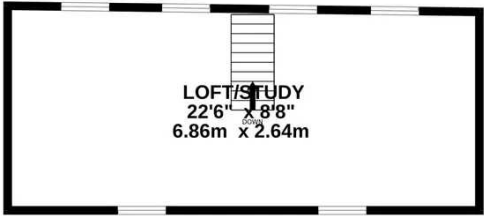
GROUND FLOOR
468 sq.ft. (43.5 sq.m.) approx.



1ST FLOOR
468 sq.ft. (43.5 sq.m.) approx.



2ND FLOOR
200 sq.ft. (18.6 sq.m.) approx.



TOTAL FLOOR AREA : 1136 sq.ft. (105.5 sq.m.) approx.

Whilst every attempt has been made to ensure the accuracy of the floorplan contained here, measurements of doors, windows, rooms and any other items are approximate and no responsibility is taken for any error, omission or mis-statement. This plan is for illustrative purposes only and should be used as such by any prospective purchaser. The services, systems and appliances shown have not been tested and no guarantee as to their operability or efficiency can be given.
Made with Metropix ©2024



Broadlands

Broadlands Estates, Library Place - JE2 3NL

07829 917172 • don@broadlandsjersey.com • www.broadlandsjersey.com/

BROADLANDS

FINDING YOU A HOME SINCE 1972