



The Cravens, Smallfield, RH6 9QS

Guide Price £375,000 - £400,000



**MANSELL
McTAGGART**
— Trusted since 1947 —



The Cravens, Smallfield, RH6 9QS

Tucked away in a quiet cul-de-sac in the charming village of Smallfield, this 2-bedroom semi-detached bungalow is ready to welcome its new owners with open arms.

Step inside and you'll instantly notice the spacious and airy feel that permeates throughout this lovely home. The living/dining room is a true highlight, flooded with natural light streaming in from the bay window. It's the perfect spot to relax after a long day or entertain friends and family.

Two generously sized bedrooms offer plenty of room for personalisation and a cosy night's rest. The kitchen is a delightful space, overlooking the rear garden, making meal preparations a joy with a view.

Speaking of the rear garden, it's a beautifully maintained oasis of tranquillity and privacy. Picture yourself enjoying your morning coffee or hosting a BBQ with loved ones in this serene outdoor space.



The Cravens, Smallfield, RH6 9QS

For those who love to tinker or need extra storage space, the tandem garage with a large workshop area is a dream come true. And with a driveway that easily fits several cars, parking will never be a hassle.

This property is not just a house – it's a home filled with warmth and character, just waiting for its next chapter to unfold. To top it off, it's being offered with no onwards chain, making the transition to your new abode that much smoother.

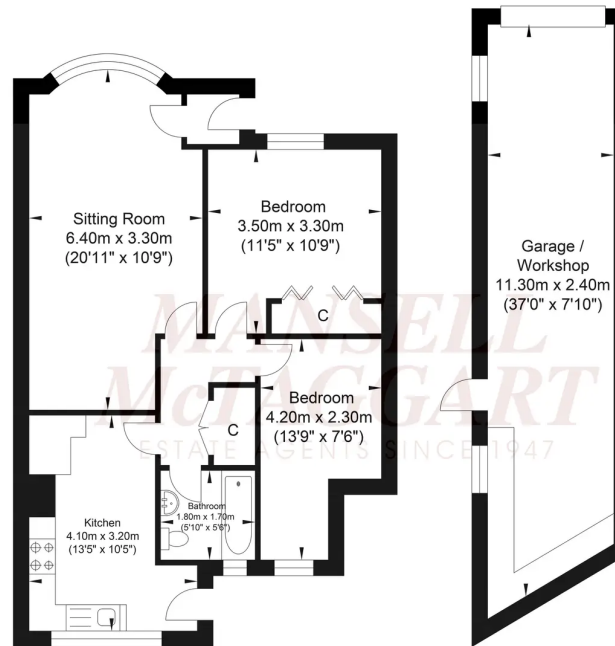
Perfectly situated in the sought-after village of Smallfield, everything you could need is within reach, from local amenities to picturesque walking routes and easy access to nearby towns and cities.

Don't miss the chance to make this delightful bungalow your own slice of paradise – schedule a viewing today and start envisioning the life you could build in this cosy haven.

Council Tax band: D//Tenure: Freehold



The Cravens



Ground Floor
Approximate Floor Area
645.29 sq ft
(59.95 sq m)

Outbuilding
Approximate Floor Area
273.51 sq ft
(25.41 sq m)

Approximate Gross Internal Area (Excluding Outbuilding) = 59.95 sq m / 645.29 sq ft
Illustration for identification purposes only, measurements are approximate, not to scale.

Mansell McTaggart Horley

Mansell Mc Taggart, 3 Central Parade Massetts Road - RH6 7PP

01293 228228

horley@mansellmctaggart.co.uk

www.mansellmctaggart.co.uk/branch/horley