

The background features a dark blue field with a complex geometric pattern. A prominent white line forms a large, irregular shape that resembles a stylized 'A' or a series of nested triangles. This white shape is surrounded by thick, gold-colored lines that create a grid-like structure with various rectangular and triangular openings. The overall effect is one of modern, architectural precision.

**BRINDLEY PLACE**  
Birmingham

# CONTENTS

**6**

**Community**

**12**

**Location**

**18**

**Opportunity**

# THE PLACE



**4,800 - 5,000 sq ft forward  
thinking offices to let**





# 10,000 KINDRED SPIRITS





For over 20 years, Brindleyplace has been Birmingham's byword for best-in-business.

Home to an impressive array of blue chip and professional services occupiers, it has developed a well-deserved reputation through its managed environment – the only one in Birmingham – the quality of its buildings, and continuing investment.

With ongoing development across Birmingham, there has never been a better time to be a part of the Brindleyplace community.

# Become part of our community

We all like our colleagues, but what we like more is meeting new people. The range of on-site events and activities at Brindleyplace – from live music at the Water’s Edge, to visits from street food vans and yoga classes – bring together individuals from the estate’s huge range of occupiers to mix, mingle and meet each other.







Left > Right  
/ The Gentleman's Barbers / Yoga Class  
/ All Bar One / Pizza Express / Street Food /  
/ Ethos - Florist / Costa Coffee



**/ Events** at Brindleyplace are as well-known (and we think much loved) as the estate itself. Open to the public all year round, it is the perfect destination for large-scale outdoor entertainment.





Left > Right  
Film Festival,  
Live Music and  
Food Festival

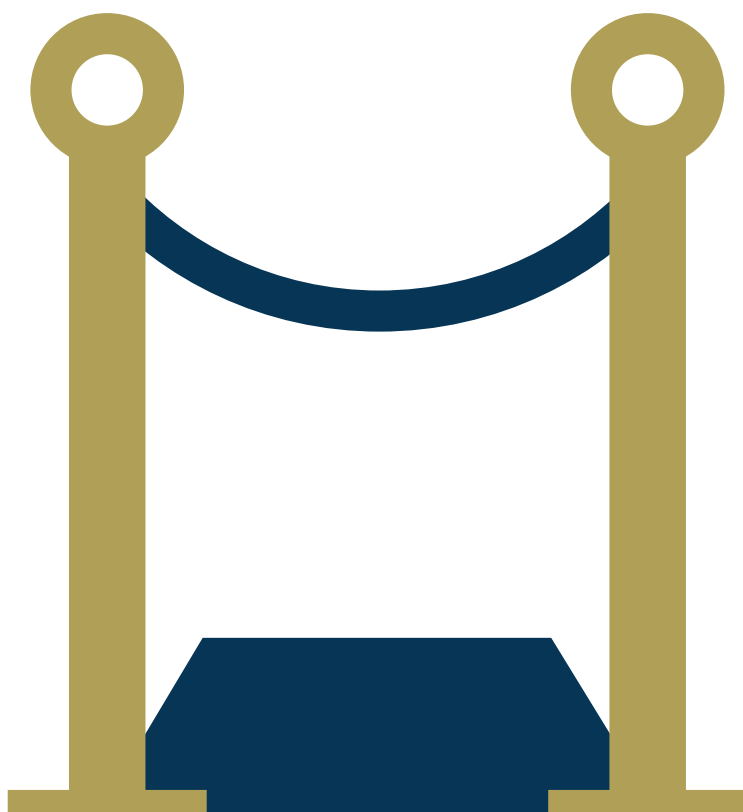


## Firm favourites & wellbeing

There's always something going on at Brindleyplace with a full calendar of events taking place all year round. From family-friendly days and live music, to markets and film screenings, all of our events are completely free to attend.

The Brindleyplace Film Festival in July plays host to the biggest blockbusters on our outdoor screen, or why not add our Food Festival in September to your diary, where you can indulge in a host of tasty treats.

Brindley also invests in a number of wellbeing initiatives, including subsidised yoga sessions for tenants, opportunities for kayaking along the canals and bee keeping classes.



A woman with long blonde hair, wearing a red and blue plaid shirt, is smiling and clinking beer glasses with others at a bar. The background is blurred, showing other people and blue and white striped decorations. The text 'WORK AND PLAY' is overlaid on the left side of the image in large, white, bold letters on a dark green background.

# WORK AND PLAY

Isn't it a pain when you finish work and have nowhere to go for a quick drink before your train?

At Brindleyplace, we combine the best of Grade A offices that meet the requirements of modern occupiers, with an enviable selection of bars and restaurants at The Water's Edge.

And of course there's an on-site barbers, Ethos florist, gym and convenience store for those who need a quick trim, fancy something floral, squeeze in a quick lunchtime workout, or just need to grab a paper!





**1 Brindleyplace**

- Birmingham 2022

**2 Brindleyplace**

- Lloyds Banking Group

**3 Brindleyplace**

- Avison Young
- Landmark

**4 Brindleyplace**

- Deloitte
- Mercer
- PageGroup
- Unity Trust Bank

**5 Brindleyplace**

- Deutsche Bank
- Places Birmingham

**6 Brindleyplace**

- WeWork

**7 Brindleyplace**

- NatWest

**8 Brindleyplace**

- Under refurbishment

**Oozells Building (9)**

- Free Radio
- Odgers Berndtson/ Berwick Partners

**10 Brindleyplace**

- Under refurbishment

**11 Brindleyplace**

- Aston Carter
- Colliers International LLP
- Friend LLP
- Global Radio
- Hettle Andrews & Associates Ltd
- MSO Workspace Ltd
- Robert Walters

## LEISURE



## Restaurants

1. Bank
2. Carluccio's
3. Cielo
4. Coast to Coast
5. Gourmet Burger Kitchen
6. Maribel
7. Piccolino
8. Pizza Express
9. Pulperia
10. Recess
11. Siamais
12. Vietnamese Street Kitchen
13. wagamama
14. Zizzi

## Leisure

15. Bannatyne Health Club
16. Crescent Theatre
17. IKON Gallery
18. The National SEALIFE Cen

## Cafés + Bars

19. All Bar One
20. Be At One
21. Caffè Nero
22. Costa Coffee
23. Cosy Club
24. Pret a Manger
25. NUVO
26. Pitcher & Piano
27. Slug & Lettuce
28. The Alchemist
29. Yorks at Ikon

## Retail

30. Baguette du Monde
31. Boots
32. Ethos - Florist
33. Ikon Shop
34. Places Birmingham
35. Sainsbury's Local
36. SPAR
37. SUBWAY
38. The Gentlemen Barbers

## Accommodation

39. Hilton Garden Inn
40. Saco Apartments

ALL · BAR · ONE



PULPERIA

PRET

Sainsbury's



THE ALCHEMIST

COSTA

**/ Location** is key & Brindleyplace  
is perfectly situated to take full  
advantage of Birmingham's  
current period of burgeoning  
development, with so much all  
within a short walk...



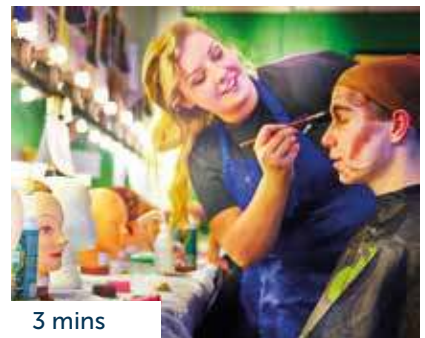
1 min

**1. SEALIFE**



1 mins

**2. IKON Gallery**



3 mins

**3. Crescent Theatre**



3 mins

**4. Utilita Arena  
B'ham / LEGOLAND  
Discovery Centre**



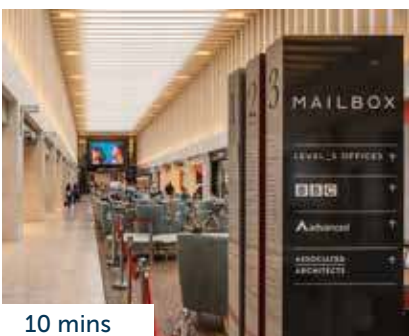
3 mins

**5. The ICC**



9 mins

**6. The Cube**



10 mins

**7. Mailbox**



15 mins

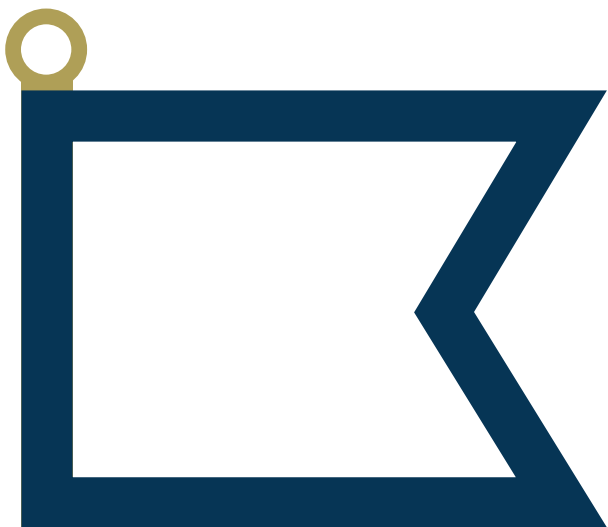
**8. Grand Central**



15 mins

**9. Bullring**





# STYLE WITH PURPOSE



Reception Area CGI



Spaces at Brindleyplace have been subject to significant investment, with £3 million committed to refurbishing and improving 3 and 4 Brindleyplace.

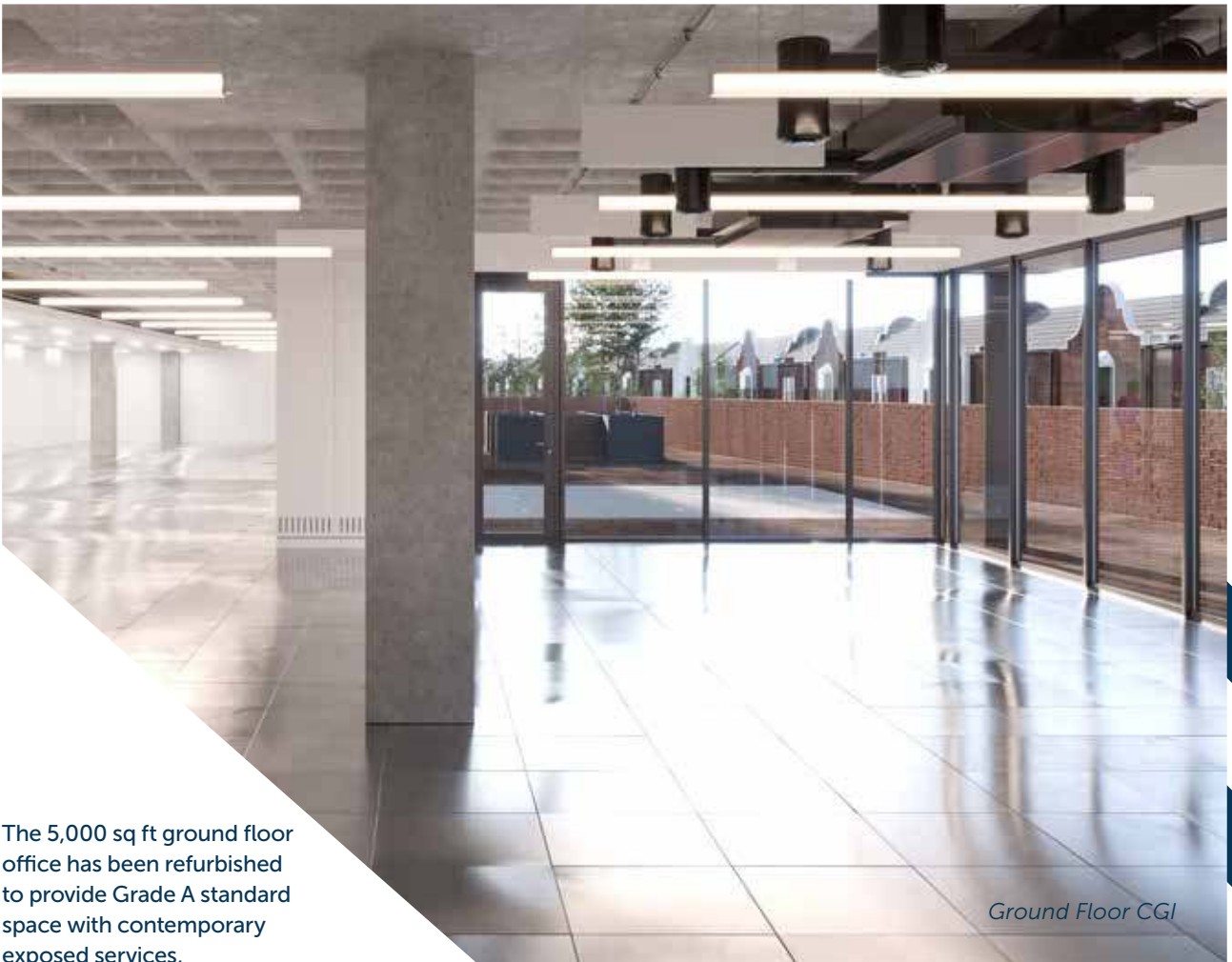
Upgrades at 4 Brindleyplace include a renovated entrance and reception area, a new repositioned welcome desk and improved visitor seating and finishes.



Canalside Terrace CGI



Office CGI



Ground Floor CGI

The 5,000 sq ft ground floor office has been refurbished to provide Grade A standard space with contemporary exposed services, suspended LED light fittings and raised floors, with access to a private canal side terrace.

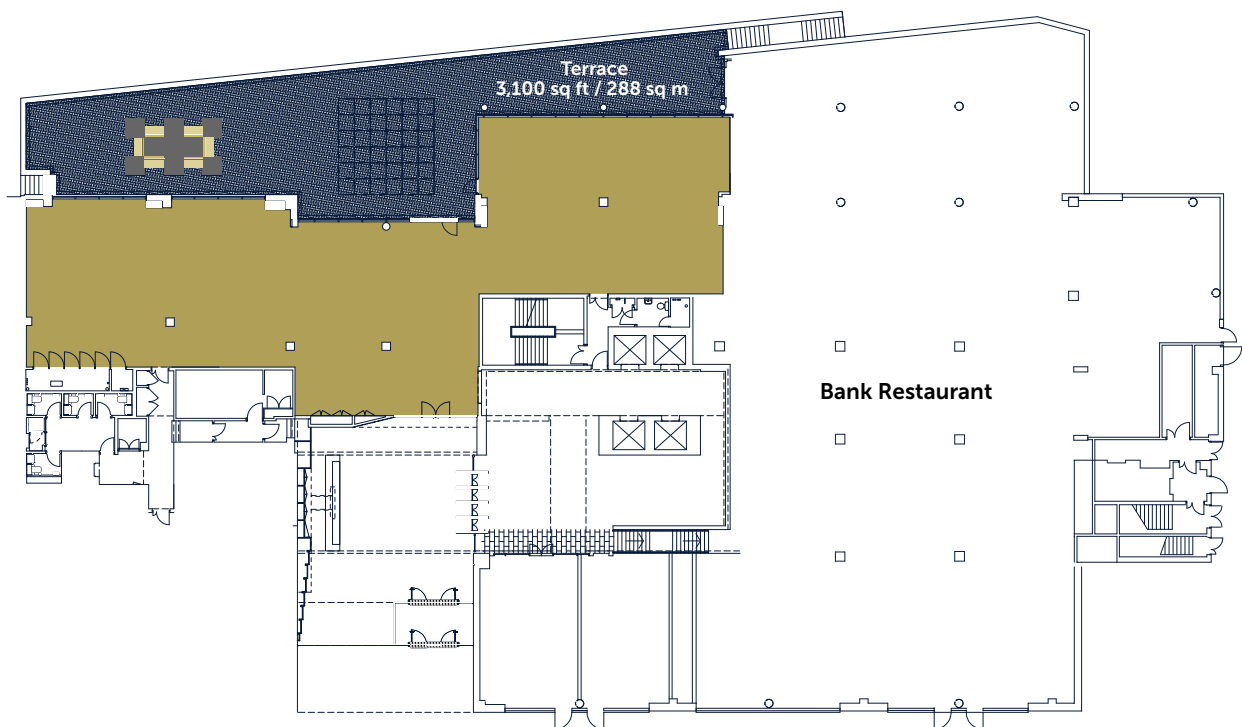


Office CGI



# GROUND FLOOR

4,939 sq ft / 458.8 sq m



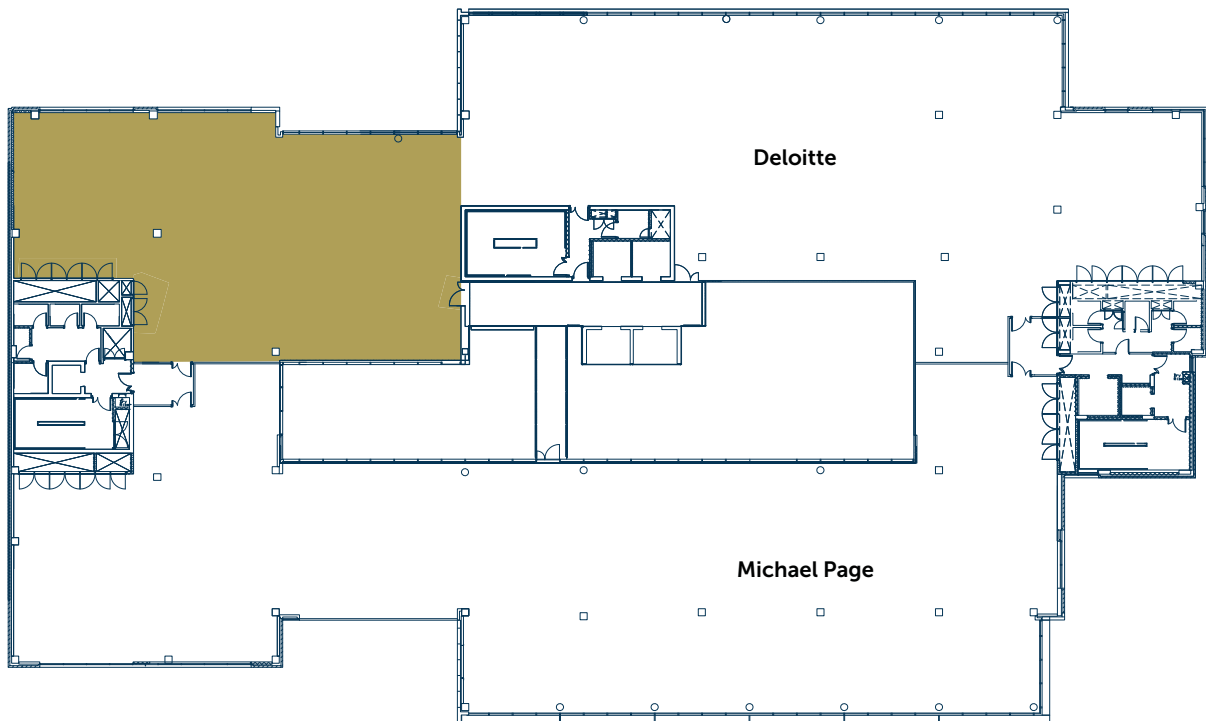
## Specification

- Featured manned reception
- Full height atrium
- Open plan floorplate
- Three passenger lifts and additional goods lift
- LED luminaires
- EPC rating C
- Secure basement car parking available, with an option for further spaces in the Canalside Car Park



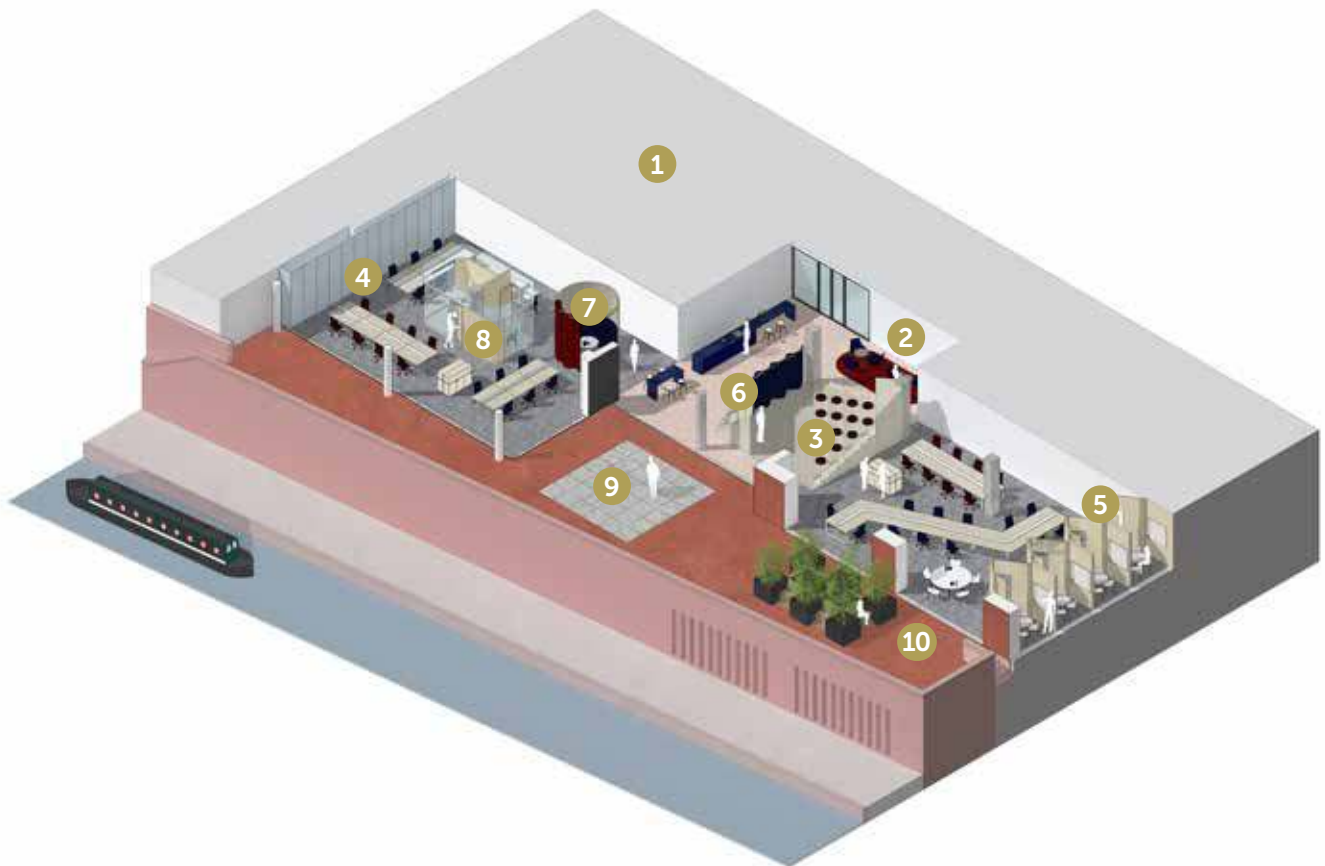
# 4TH FLOOR

4,796 sq ft / 445.5 sq m



- Comprehensive building management system to enable reduced running costs
- Male, female and disabled WCs and shower facilities on each floor
- Four pipe fan coil air-conditioning
- Raised access floors
- DDA compliant

# GROUND FLOOR SPACEPLAN - 1:10



## 49 workstations

- |                       |                     |
|-----------------------|---------------------|
| 1. Building Reception | 6. Break Space      |
| 2. Client Lounge      | 7. Meeting Suite    |
| 3. Ideas Forum        | 8. Executive Suite  |
| 4. Workstations       | 9. Canal Terrace    |
| 5. Workbooths         | 10. Terrace Seating |

# GROUND FLOOR SPACEPLAN - 1:8



## 61 workstations

- |                       |                     |
|-----------------------|---------------------|
| 1. Building Reception | 7. Workbooth        |
| 2. Office Reception   | 8. Printing Booth   |
| 3. Client Lounge      | 9. Executive Suite  |
| 4. Break Space        | 10. Canal Terrace   |
| 5. Meeting Suite      | 11. Terrace Seating |
| 6. Workstations       |                     |

# BRINDLEY PERKS

## The place for offers

Our new scheme replaces our previous loyalty card as we go completely digital.

Access exclusive offers and discounts from across the estate straight from your phone. Signing up takes less than 5 minutes – simply register your details on our website [Brindleyplace.com](http://Brindleyplace.com).

[Brindleyplace.com/perks](http://Brindleyplace.com/perks) to browse the incredible deals available. Select the deal you'd like, click 'redeem' and present to the cashier with your bill.

It's that easy.



# SECURE

## The place for peace of mind

Brindleyplace is a fully managed estate which provides a safe and secure working environment.

With a dedicated estate management team on hand 7 days a week, over 4,500 building checks carried out every year and 24/7 security patrols, Brindleyplace offers a completely stress-free environment.



# GOT OUR NUMBER?

For office enquiries contact:

AVISON  
YOUNG

**Charles Toogood**

[charles.toogood@avisonyoung.com](mailto:charles.toogood@avisonyoung.com)  
+ 44 (0) 121 609 8448

**George Jennings**

[george.jennings@avisonyoung.com](mailto:george.jennings@avisonyoung.com)  
+ 44 (0) 121 609 8458

 CUSHMAN &  
WAKEFIELD

**David Tonks**

[david.tonks@cushwake.com](mailto:david.tonks@cushwake.com)  
+ 44 (0) 121 697 7313

**David Rigby**

[david.rigby@cushwake.com](mailto:david.rigby@cushwake.com)  
+ 44 (0) 121 710 4636

 savills

**Ben Thacker**

[ben.thacker@savills.com](mailto:ben.thacker@savills.com)  
+44 (0) 121 200 4561

**Jonathan Ottewell**

[jottewell@savills.com](mailto:jottewell@savills.com)  
+44 (0) 121 634 8419

**Misrepresentation Act:** Avison Young, Cushman & Wakefield and Savills for themselves and for the vendors or lessors of this property, whose agents give notice that: a) all particulars are set out as general outline only for the guidance of intending purchasers or lessees, and do not comprise part of an offer or contract; b) all descriptions, dimensions, references to condition and necessary permissions for use and occupation, and other details are given in good faith and are believed to be correct but any intending purchasers or tenants should not rely on them as statements or representations of fact but must satisfy themselves by inspection or otherwise as to the correctness of each of them; c) no person in the employment of Avison Young, Cushman & Wakefield and Savills has any authority to make any representation of warranty whatsoever in relation to this property. March 2020.

Designed and produced by Core. 0121 232 5000 / [core-marketing.co.uk](http://core-marketing.co.uk)



**4BRINDLEYPLACE.CO.UK**