

# NORTHSPRING

TEMPLE ST

ANOTHER CLASS OF OFFICE

[NORTHSPRING.COM](http://NORTHSPRING.COM)



NORTHSRING  
TEMPLE

# TEMPLE STREET

# A BIRMINGHAM CLASSIC

Introduction	04
Lifestyle	05
Office Specification	07
Floor Plans	10
Location	18
Contacts	19



# ELEGANCE IS THE ONLY BEAUTY THAT NEVER FADES

Our beautiful  
heritage  
workspace is  
designed to be  
enjoyed

Prominently located on Temple Street, in the heart of Birmingham's bustling city centre, Northspring is the perfect place for your business to call home.

Designed with the occupier in mind, our spaces include boutique furnishings inspired by the history of the building.

In addition to your own private office, you'll have a wealth of amenities included for you and your employees to use.



# A PLACE WHERE ELEGANCE MEETS FUNCTIONALITY

We're not a co-working office, however our communal spaces promote collaboration and community

Temple Street is a heritage building which has been completely reimagined to create a brand new, boutique office offering.

Boasting 24 suites over 7 floors, you have the option to take one or multiple suites to fit the needs of your business.

Our high-spec fixtures and fittings combined with the latest workspace technologies make working from Northspring seamless.



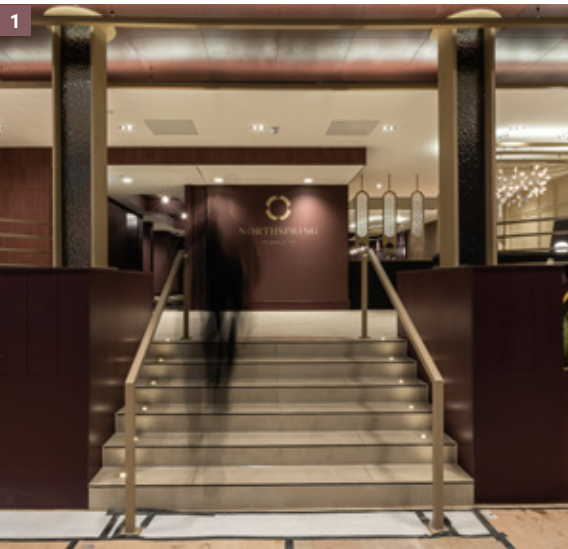


High spec fixtures and fittings as well as the very latest workplace technologies complement the opulently remodelled interiors

7  
FLOORS

24  
EXCLUSIVE  
WORKSPACES

SUITES FROM  
1,100 Sq Ft



Northspring includes a range of amenities which are exclusive to occupiers, including access to features in nearby Northspring offices

01  
**CONCIERGE**

Our concierge service is integral to the inner workings of the building. From the greeting of clients and visitors on arrival, to business lounge management and individual concerns, our concierge responds efficiently to every situation.

02  
**THE WORKSPACE**

Light bright and airy private offices designed to fit the needs of your business

- Beautifully remodelled workspace
- Flexible suites from 1,100 sq ft
- Zoom booths on every floor
- Pre-connected with high speed broadband
- Fast delivery furniture packages available
- Fully serviced kitchenette on each floor



03  
**THE CLUB**

The brand new, in-house business lounge, The Club, is an elegant communal space, complete with members club ambience. Designed around the concepts of luxury and functionality the space encourages social interaction, casual and professional collaboration and co-working within our community.

- Screening Room
- Podcast Room
- Arrival lounge
- Touchdown Zone
- Booth seating and meeting spaces
- Breakout spaces
- Refreshments Bar

04  
**THE GALLEY**

The Galley is the perfect place to unwind and refuel, with informal meeting areas and a high specification kitchen on every floor:

- Fridge
- Microwave
- Tea & Coffee Facilities
- Lockable Storage
- Breakout Space
- Informal Meeting Area
- Booth Seating



05  
**THE PARK**

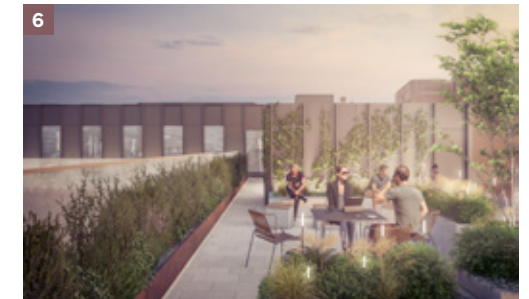
The lower ground floor at Temple St accommodates all of your wellbeing and fitness needs. Comprising of a sleek workout space and amenities for cycling:

- Fitness Studio
- Cycle Storage
- Showers
- Unisex changing facilities
- Accessible Shower and Change
- Locker Storage

06  
**THE DECK**

Enjoy stunning views of Birmingham's skyline from Northspring's private roof terrace:

- Outdoor seating area
- Space for al-fresco meetings
- Space for rest and relaxation
- Plants and fresh herbs
- Perfect for post-work drinks





# WORK LIFE BALANCED

The average person spends over 90,000 hours of their life at work. We want to help make those hours enjoyable

Recent studies have shown that unhealthy work environments can lead to burnout and employees suffering with stress. With this in mind, wellness is an integral part of the Northspring model.

Built in leisure facilities across all our buildings ensure occupiers can stay happy, healthy and motivated, making it easier than ever to prioritise your workplace wellbeing. Wellington Street occupants have exclusive access to the on-site, high-spec gym as well as lockers, changing areas, showers and bike storage for those summer cycles to work.

Being part of the Northspring family means you have free access to all our fitness suites across multiple locations in Manchester and Leeds, making it easy to maintain your routine wherever you are.





# THERE IS BEAUTY IN EVERYTHING

## BUILDING SPECIFICATION

Every detail matters and we have considered them all

With a concierge style front-desk, plug and play connectivity, breakout space, cycle hub and 13 seat screening room, Northspring provides a full range of high-quality amenities. This sits alongside initiatives that will help you become a part of this exciting community.



Screening Room



Meeting Room Facilities



Podcast Studio



LED Strip Lighting



Zoom Booths



Furniture Package



Concierge Desk



Passenger Lift



24/7 Access



Cycle Storage



Secure Access



Shower Facilities & Lockers



Plug & Play Connectivity



# GROUND FLOOR

LEISURE SPACE	SQ M	SQ FT
A	-	-

- The Club ●

---

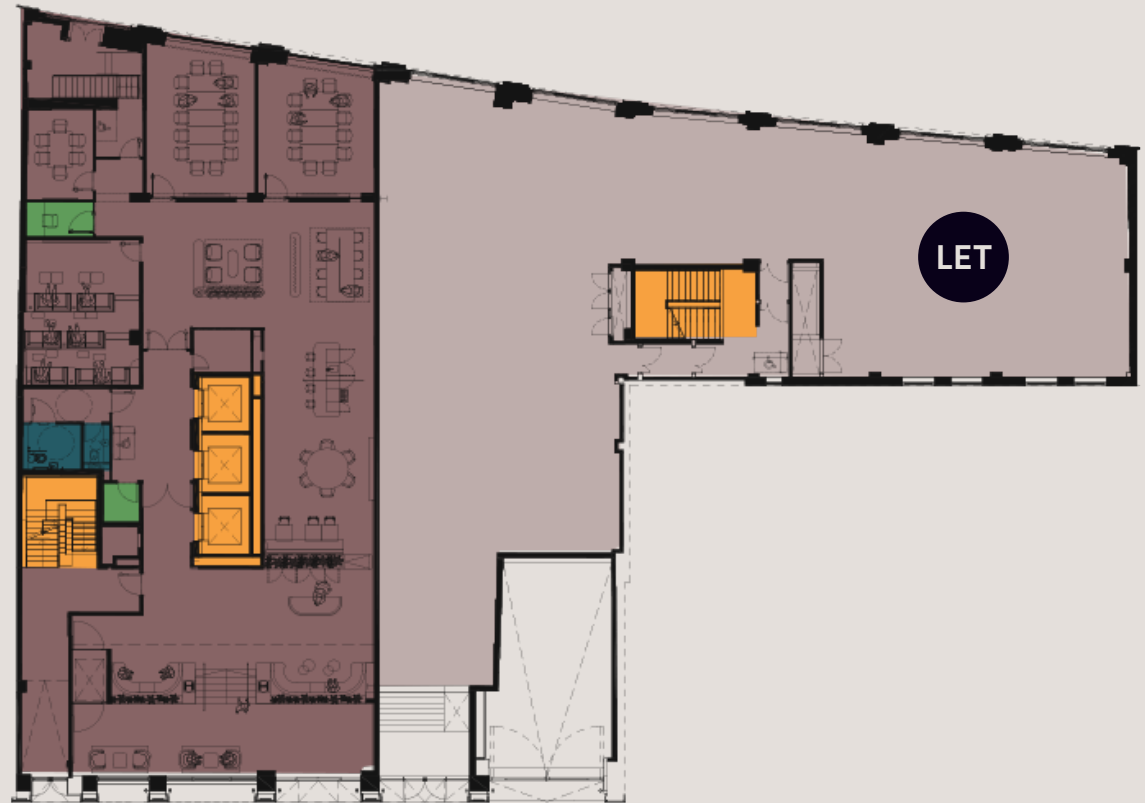
- Zoom Booth & Podcast Room ●

---

- Stairwell / Lift Access ●

---

- Toilets ●



TEMPLE STREET

\*Indicative location

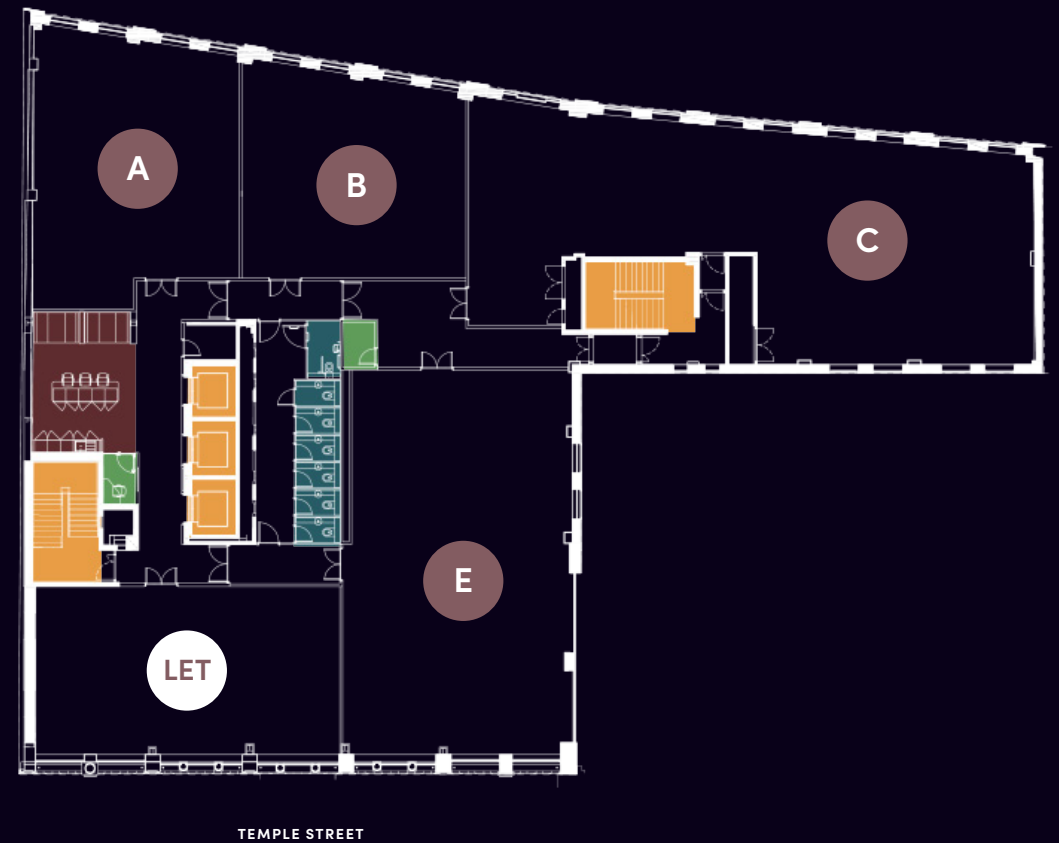
\*\* All measurements are subject to change

# FLOOR ONE

OFFICE SPACE	SQ M	SQ FT
A	114	1,227
B	97	1,044
C	234	2,519
D		LET
E	181	1,948

A,B,C or D,E can be combined to create larger suites

The Galley	<span style="color: #8B4513;">●</span>
Zoom Booth	<span style="color: #3CB371;">●</span>
Stairwell / Lift Access	<span style="color: #FF8C00;">●</span>
Toilets	<span style="color: #008080;">●</span>



\*Indicative location

\*\* All measurements are subject to change

# FLOOR TWO

OFFICE SPACE	SQ M	SQ FT
A	114	1,227
B	97	1,044
C	234	2,519
D	111	1,195
E	181	1,948

A,B,C or D,E can be combined to create larger suites

- The Galley

---

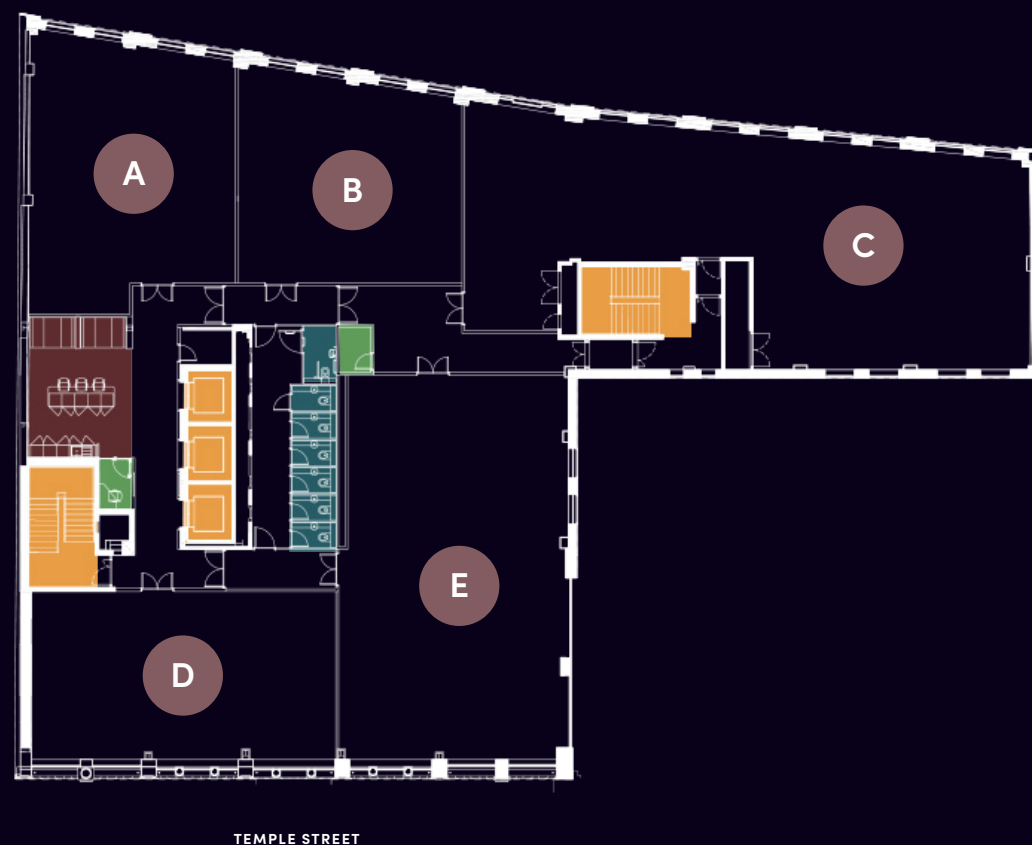
- Zoom Booth

---

- Stairwell / Lift Access

---

- Toilets



\*Indicative location

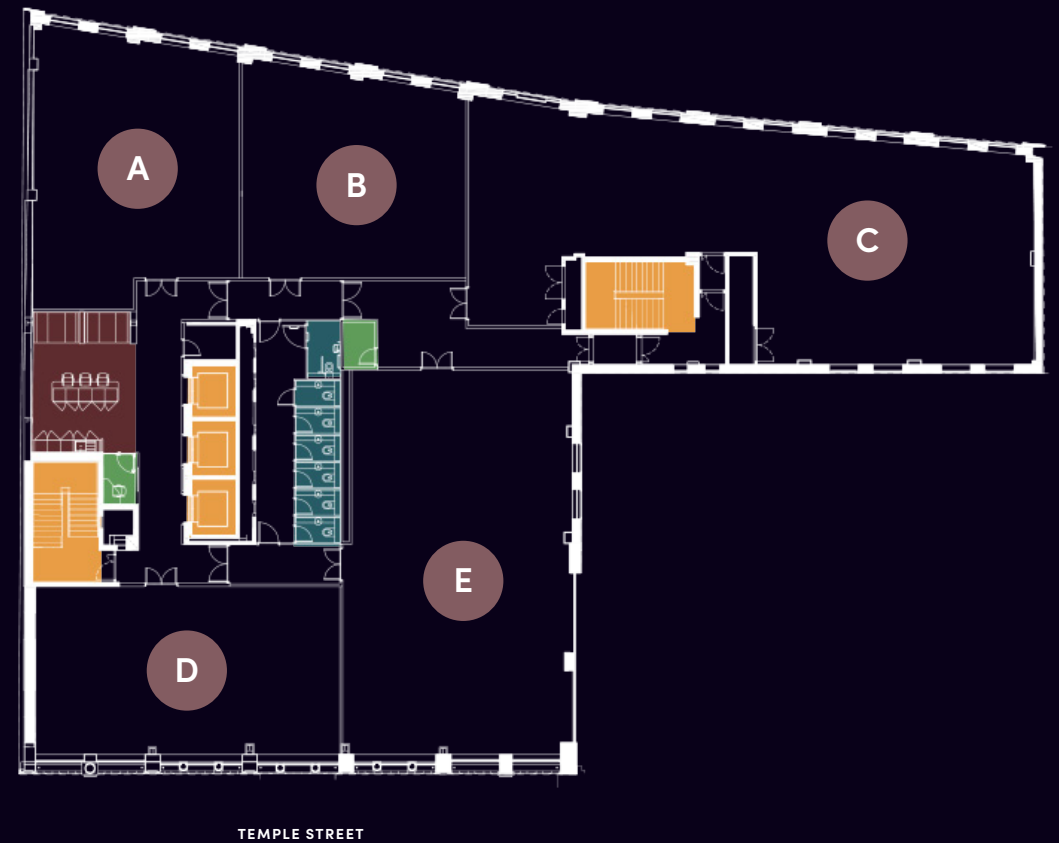
\*\* All measurements are subject to change

# FLOOR THREE

OFFICE SPACE	SQ M	SQ FT
A	114	1,227
B	97	1,044
C	234	2,519
D	111	1,195
E	181	1,948

A,B,C or D,E can be combined to create larger suites

The Galley	<span style="color: #8B4513;">●</span>
Zoom Booth	<span style="color: #3CB371;">●</span>
Stairwell / Lift Access	<span style="color: #FF8C00;">●</span>
Toilets	<span style="color: #008080;">●</span>



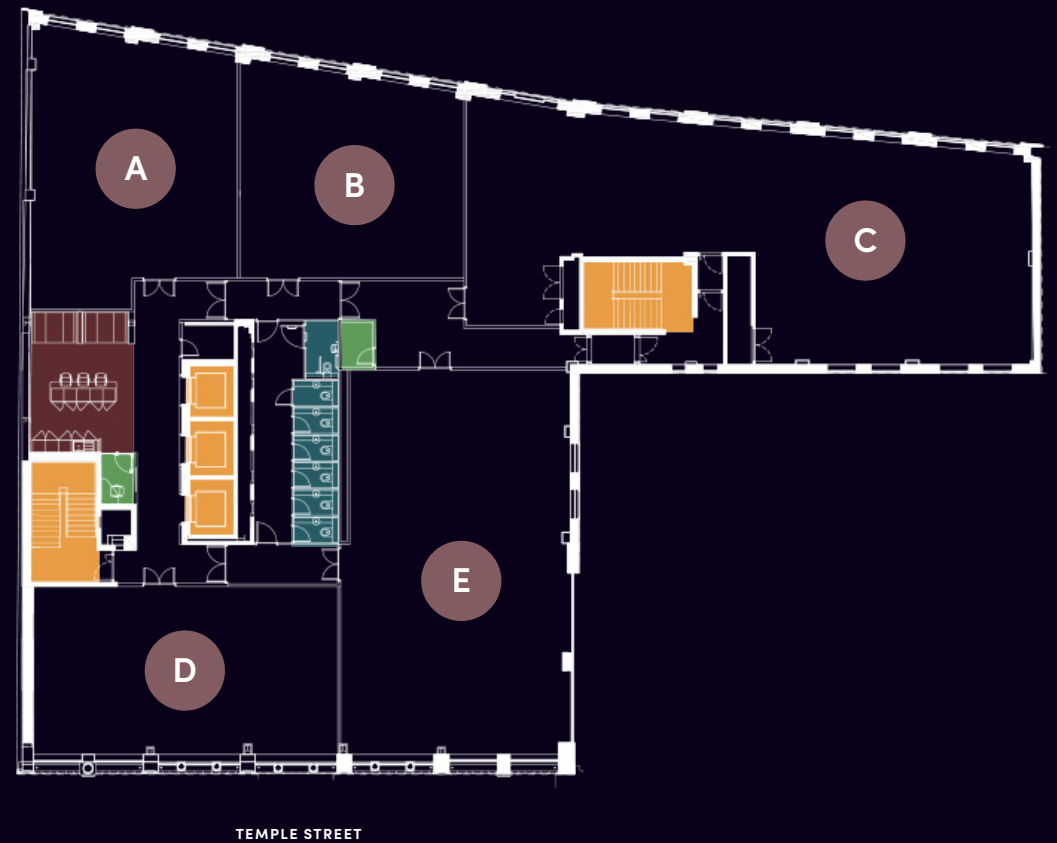
\*Indicative location  
 \*\* All measurements are subject to change

# FLOOR FOUR

OFFICE SPACE	SQ M	SQ FT
A	105	1,130
B	87	936
C	212	2,282
D	116	1,249
E	181	1,948

A,B,C or D,E can be combined to create larger suites

- The Galley ●
- Zoom Booth ●
- Stairwell / Lift Access ●
- Toilets ●



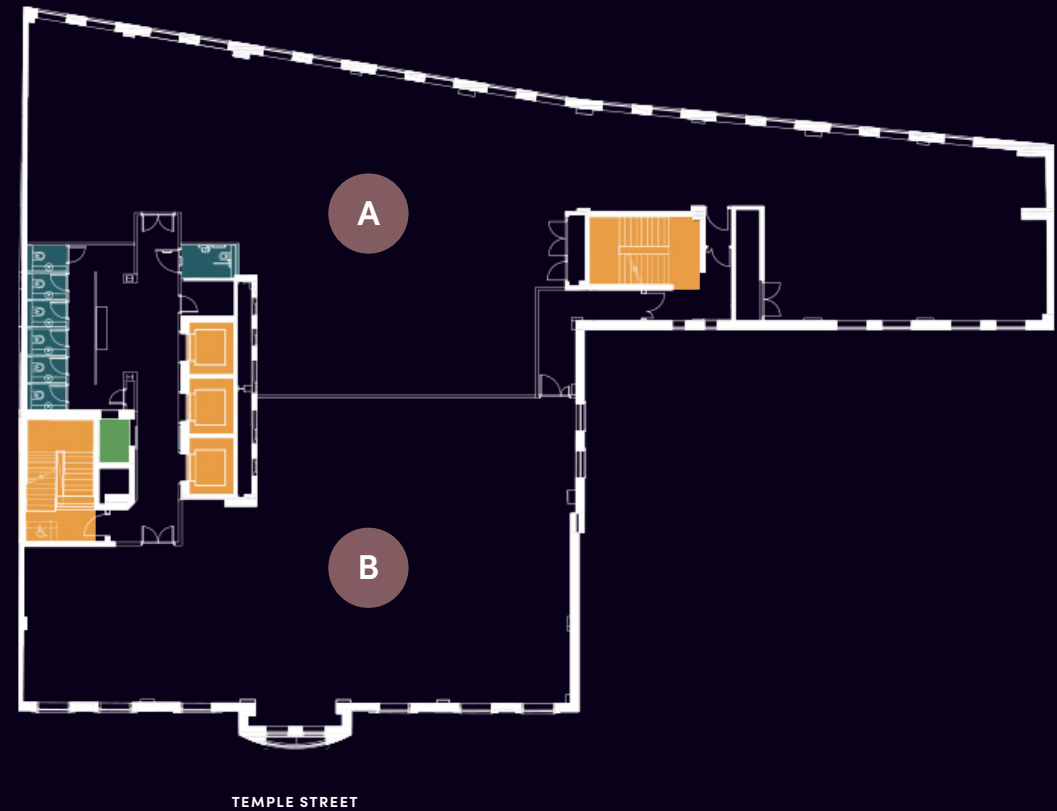
\*Indicative location  
 \*\* All measurements are subject to change

# FLOOR FIVE

OFFICE SPACE	SQ M	SQ FT
A	435	4,682
B	286	3,079

Suite A and B can be combined to make a larger suite

- Zoom Booth ●
- Stairwell / Lift Access ●
- Toilets ●



\*Indicative location  
 \*\* All measurements are subject to change

# FLOOR SIX

OFFICE SPACE	SQ M	SQ FT
A	388	4,176
B	243	2,616

Suite A and B can be combined to make a larger suite

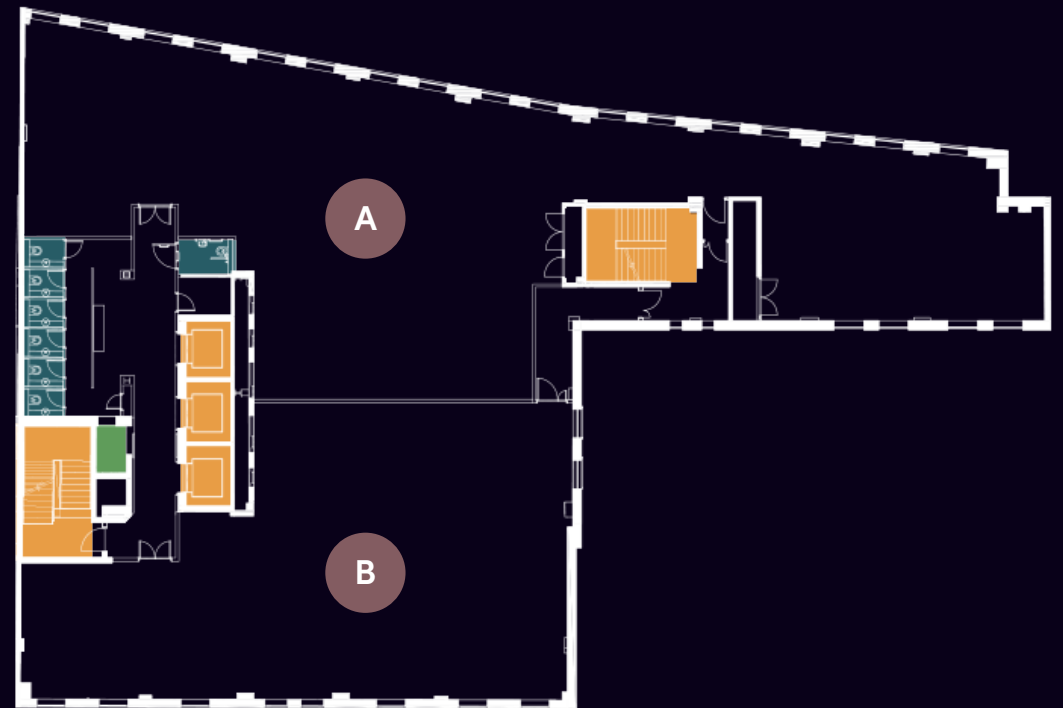
- Zoom Booth ●

---

- Stairwell / Lift Access ●

---

- Toilets ●



TEMPLE STREET

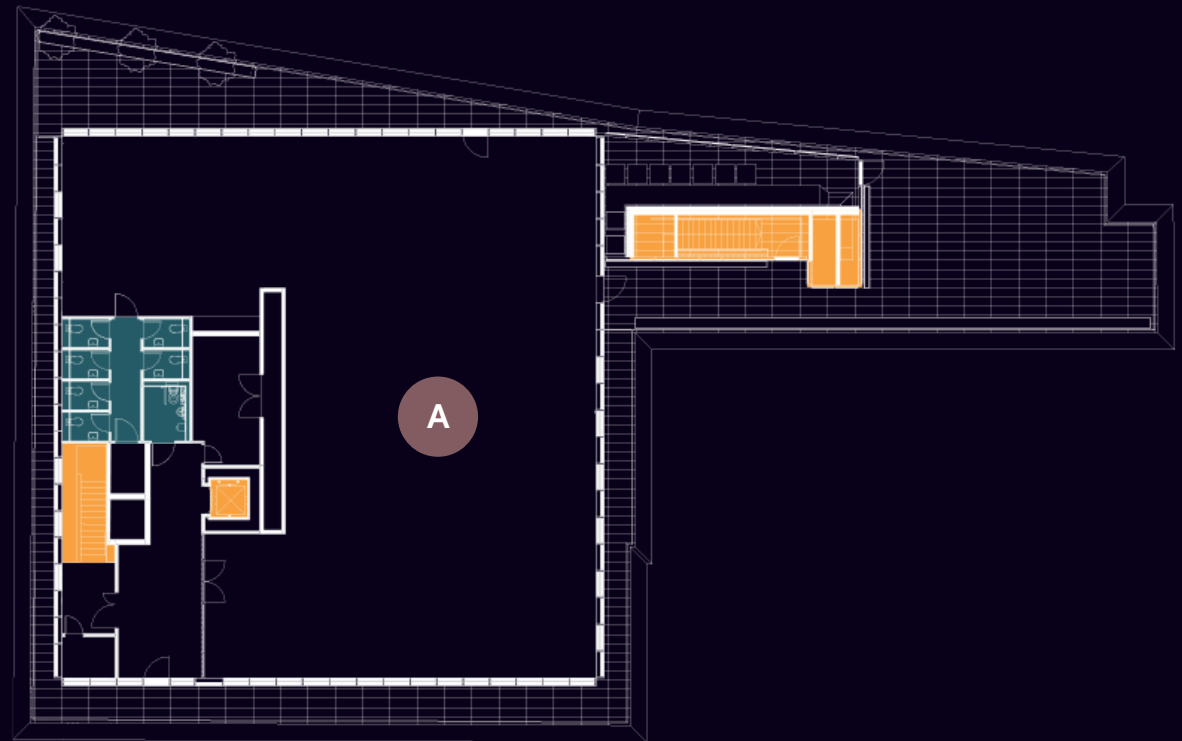
\*Indicative location

\*\* All measurements are subject to change



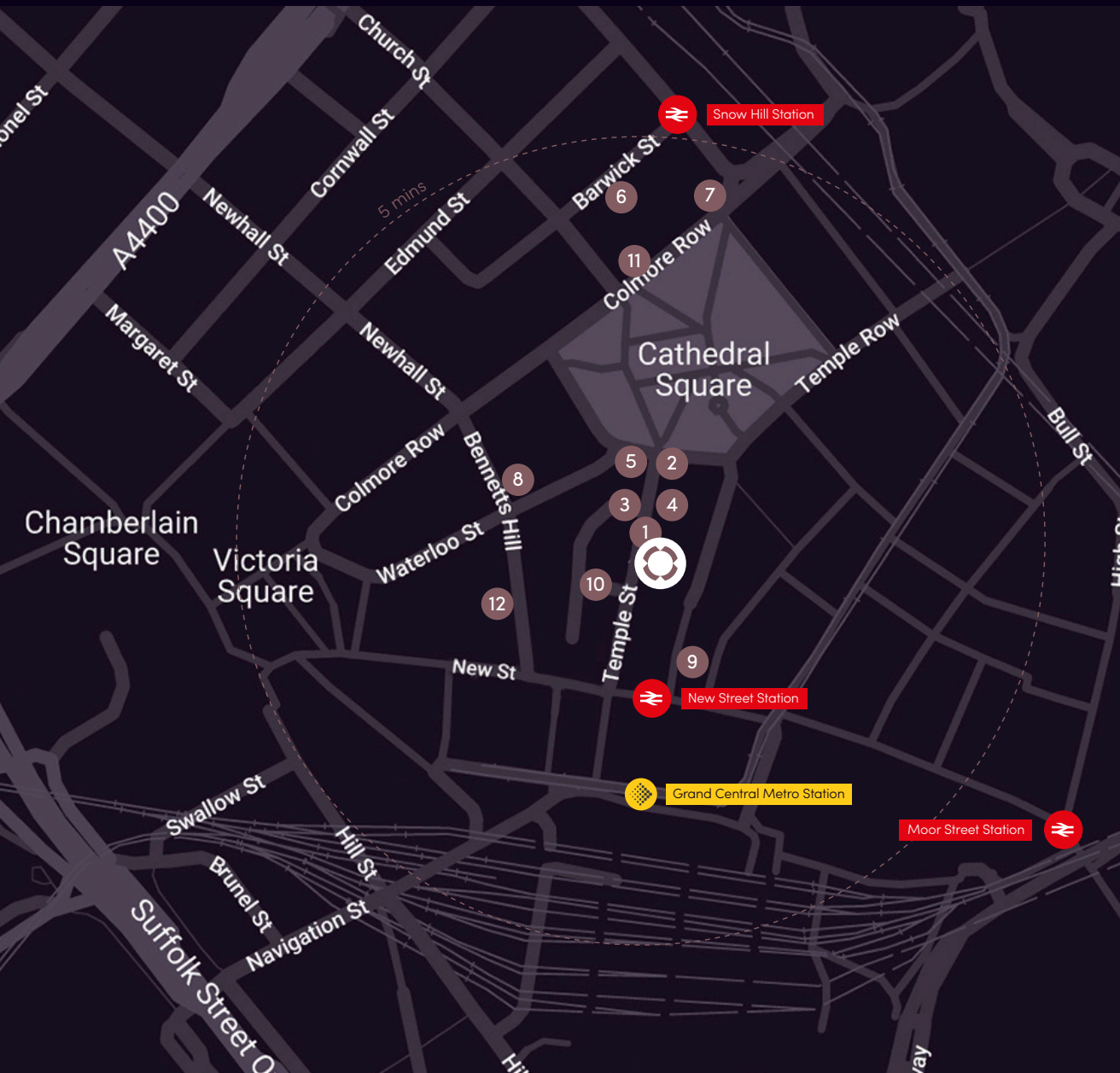
# FLOOR SEVEN

OFFICE SPACE	SQ M	SQ FT
A	371	4,000



- Stairwell / Lift Access ●
- Toilets ●

\*Indicative location  
 \*\* All measurements are subject to change



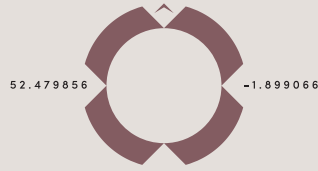
# PERFECTLY POSITIONED

## 31 Temple Street, Birmingham B2 5DB

Northspring is perfectly located to give you access to all Birmingham City Centre has to offer. Northspring couldn't be better positioned for transport links, with the city's main bus, Metro and train stations all within 10 minutes on foot, it is simple to travel to all major connections across the country.

Birmingham's business, shopping and leisure districts such as Colmore Business District, Chinatown and the Jewellery Quarter are minutes away.

- |     |                         |                           |           |
|-----|-------------------------|---------------------------|-----------|
| 1.  | London Cocktail Club    | <b>ON FOOT</b>            |           |
| 2.  | The Ivy                 | New Street Station        | 3 mins    |
| 3.  | San Carlo               | Snow Hill Station         | 4 mins    |
| 4.  | The Oyster Club         | Moor Street Station       | 8 mins    |
| 5.  | Fumo                    | Colmore Business District | 3 mins    |
| 6.  | Tattu                   | Chinatown                 | 9 mins    |
| 7.  | 200 Degrees             | Jewellery Quarter         | 15 mins   |
| 8.  | Philpotts               | <b>RAIL</b>               |           |
| 9.  | Tesco Express           | Birmingham Airport        | 13 mins   |
| 10. | Flight Club             | London                    | 1.5 hours |
| 11. | The Alchemist           | Edinburgh                 | 4.5 hours |
| 12. | Rudy's Neapolitan Pizza | Manchester                | 1.5 hours |
|     |                         | Leeds                     | 2 hours   |
|     |                         | Liverpool                 | 1.5 hours |
|     |                         | Newcastle                 | 3.5 hours |



# NORTHSPRING

TEMPLE ST

AVISON  
YOUNG

George Jennings  
george.jennings@avisonyoung.com  
07900 678 125

Colliers

Richard Williams  
Richard.Williams@colliers.com  
07468 727158

31 TEMPLE STREET  
BIRMINGHAM  
B2 5DB

NORTHSPRING.COM