



# 125

**Portland Street, Manchester City Centre**

HIGH QUALITY REFURBISHED  
OFFICE ACCOMMODATION

[Click to enter](#)



**SPECIFICATION**

**ACCOMMODATION**

**LOCATION**

**TERMS**

**CONTACT**



# 125

Portland Street, Manchester City Centre



**SPECIFICATION**

**ACCOMMODATION**

**LOCATION**

**TERMS**

**CONTACT**



## OUTLINE SPECIFICATION

The office space has been refurbished to a high standard of specification and finish. The building now benefits from:

- New suspended ceilings
- Gas central heating
- Two 8 person passenger lifts
- New full access raised floors
- Quality finishes throughout
- DDA compliant
- Recessed LG7 compliant lighting
- On-site parking
- Comfort cooling
- Flexible and efficient floorplates allowing subdivision



# 125

Portland Street, Manchester City Centre



**SPECIFICATION**

**ACCOMMODATION**

**LOCATION**

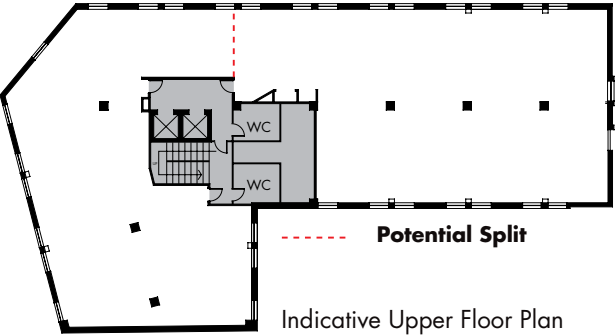
**TERMS**

**CONTACT**



**ACCOMMODATION**

Floor	Sq Ft	Sq M
Ground	2,674	248.4
First	5,100	473.8
Second	5,100	473.8
Third	5,100	473.8
<b>Total</b>	<b>17,974</b>	<b>1,669.8</b>



# 125

Portland Street, Manchester City Centre





- SPECIFICATION**
- ACCOMMODATION**
- LOCATION**
- TERMS**
- CONTACT**



- KEY**
1. Town Hall
  2. Central Library
  3. Arndale Centre
  4. Manchester Central
  5. Manchester Central (G-Mex)
  6. Bridgewater Hall
  7. Radisson Edwardian Hotel
  8. The Midland Hotel
  9. St Peter's Square

**LOCATION**

The building occupies a prominent position on Portland Street at its junction with Dickinson Street, close to Manchester's financial district, in an area renowned for attracting professional occupiers. St Peter's Square and Piccadilly metrolink stations, along with Oxford Road and Piccadilly mainline stations, are within close proximity. Many of Manchester's vibrant retail, leisure and cultural amenities are nearby.



**125**

Portland Street, Manchester City Centre



**SPECIFICATION**

**ACCOMMODATION**

**LOCATION**

**TERMS**

**CONTACT**



## TERMS

The accommodation is available by way of a flexible and competitive new lease for a term of years to be agreed.

# 125

Portland Street, Manchester City Centre





**SPECIFICATION**

**ACCOMMODATION**

**LOCATION**

**TERMS**

**CONTACT**



## VIEWING

Strictly by appointment through the joint agents:

Savills Manchester

[savills.co.uk](http://savills.co.uk) **savills**

**0161 236 8644**

**AVISON  
YOUNG**

**0161 228 1001**  
[avisonyoung.co.uk](http://avisonyoung.co.uk)

Misrepresentation Act 1967. Unfair Contract Terms Act 1977 The Property Misdescriptions Act 1991. These particulars are issued without any responsibility on the part of the agent and are not to be construed as containing any representation or fact upon which any person is entitled to rely. Neither the agent nor any person in their employ has any authority to make or give any representation or warranty whatsoever in relation to the property. October 2011.

RB&Co 0161 281 0088. [www.richardbarber.co.uk](http://www.richardbarber.co.uk)

# 125

Portland Street, Manchester City Centre