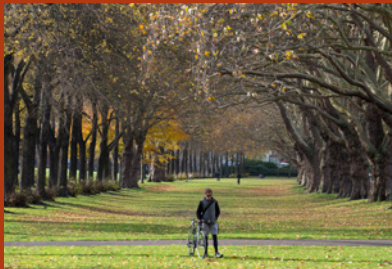




# Gladstone House

## Wandsworth Business Centre

90 Putney Bridge Road, Wandsworth,  
London SW18 1HR



[wandsworthbusinesscentre.co.uk](http://wandsworthbusinesscentre.co.uk)

High quality offices within a thriving business environment

**Up to 7,943 sq ft (737.9 sq m) To Let**  
**Available in floors**

# Gladstone House

90 Putney Bridge Road, Wandsworth, London SW18 1HR

**Gladstone House offers good quality, spacious and well connected workspace at an affordable price. Perfect for start-ups and established companies alike.**



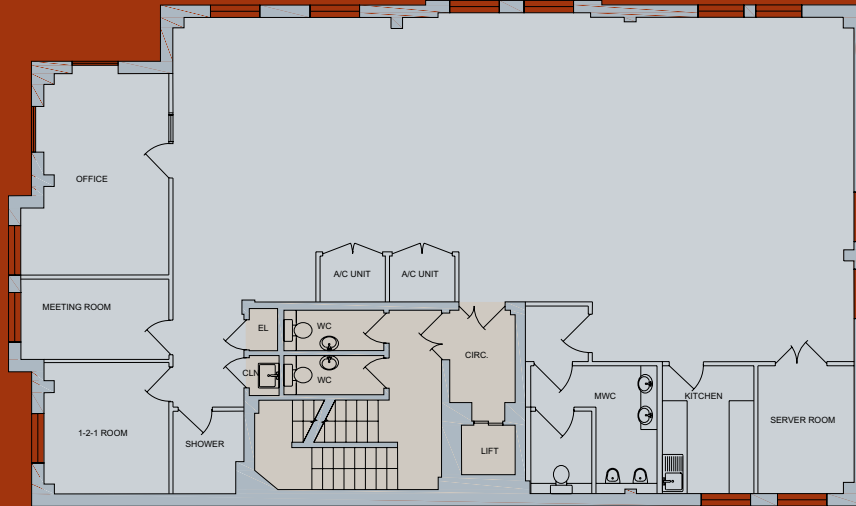
## Description

Wandsworth Business Centre is a small campus of 4 office buildings in two blocks totalling 30,000 sq ft. Gladstone House is the first to become available.

Conveniently situated between East Putney underground and Wandsworth Town rail stations, Gladstone House is a contemporary brick built office under slate roof set over 3 main floors and 3 mezzanine levels, currently fitted to offer the options of open plan and cellular workspace in a well lit business environment.



## First floor plan



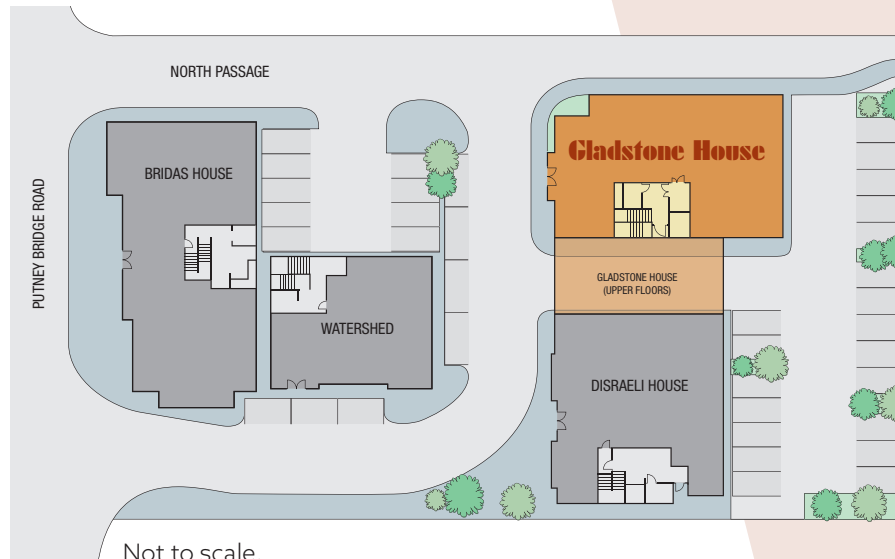
Not to scale.

## Accommodation

Floor	sq ft	sq m
Third floor mezzanine	536	49.8
Second floor mezzanine	1,021	94.9
Second floor	1,872	173.9
First floor mezzanine	1,026	95.3
First floor	1,932	179.5
Ground floor	1,555	144.5
<b>Total</b>	<b>7,943</b>	<b>737.9</b>

## Specification

- > Comfort cooling
- > Suspended ceilings
- > Cat 2 lighting
- > Lift
- > Gated parking
- > Double glazing
- > Secure access to each floor
- > Showers
- > EPC rating C (67) (valid until 10 March 2019)



# Wandsworth Business Centre

90 Putney Bridge Road, Wandsworth, London SW18 1HR

## East Putney and Wandsworth Town stations are both within a 12 minute walk.

### Location

Gladstone House is located in a prominent position on the corner of Putney Bridge Road and Adelaide Road on the border of Wandsworth and Putney.

The property is opposite the popular Queen Adelaide gastropub and near numerous shops, bars and restaurants. Scenic Wandsworth Park is a 2 minute walk.

East Putney and Wandsworth Town stations are both within a 12 minute walk of the premises providing District Line and South Western Railway services respectively.

### Communications

#### By Rail

**From East Putney**  
 Paddington 22 mins  
 Victoria 20 mins

**From Wandsworth Town**  
 Clapham Junction 2 mins  
 Waterloo 14 mins

#### By Road

South Circular 1 min  
 M4 15 mins  
 West End 20 mins  
 M25 22 mins  
 Heathrow Airport 30 mins

#### By Bicycle

Clapham Junction 10 mins  
 Putney Village 10 mins  
 Parsons Green 12 mins  
 Wimbledon Village 20 mins



[wandsworthbusinesscentre.co.uk](http://wandsworthbusinesscentre.co.uk)



**Angus Malcolmson**  
 t: 020 7911 2763  
 e: [angus.malcolmson@gva.co.uk](mailto:angus.malcolmson@gva.co.uk)

GVA hereby gives notice that the information provided (either for itself, for any joint agents or for the vendors lessors of this property whose agent GVA is) in this brochure is provided on the following conditions: (1) The particulars are set out as a general outline only, for the guidance of intending purchasers and/or lessees and do not constitute an offer or contract, or part of an offer or contract. (2) All descriptions, dimensions and references to this property's condition and any necessary permission for use and occupation, and any other relevant details, are given in good faith and are believed to be correct. However, any intending purchasers or tenants should not rely on them as statements or representations of fact but satisfy themselves of their correctness by inspection or otherwise. (3) No person in the employment of GVA, or any joint agents, has any authority to make or give any representation or warranty whatsoever in relation to the property or properties in this brochure. (4) All prices quoted are exclusive of VAT. (5) GVA shall have no liability whatsoever in relation to any documents contained within the brochure or any elements of the brochure which were prepared solely by third parties, and not by GVA, December 2018.