



THE SPARK

A NEW STANDARD FOR OFFICE SPACE
IN NEWCASTLE UPON TYNE

Newcastle
helix

THE BUILDING

The Spark provides best in class
Grade A office accommodation
at the heart of Newcastle Helix.

A flexible and highly sustainable office space that allows
occupiers to fit out in their own style, creating an opportunity
to drive collaboration and inform your corporate culture.



THE
SPARK

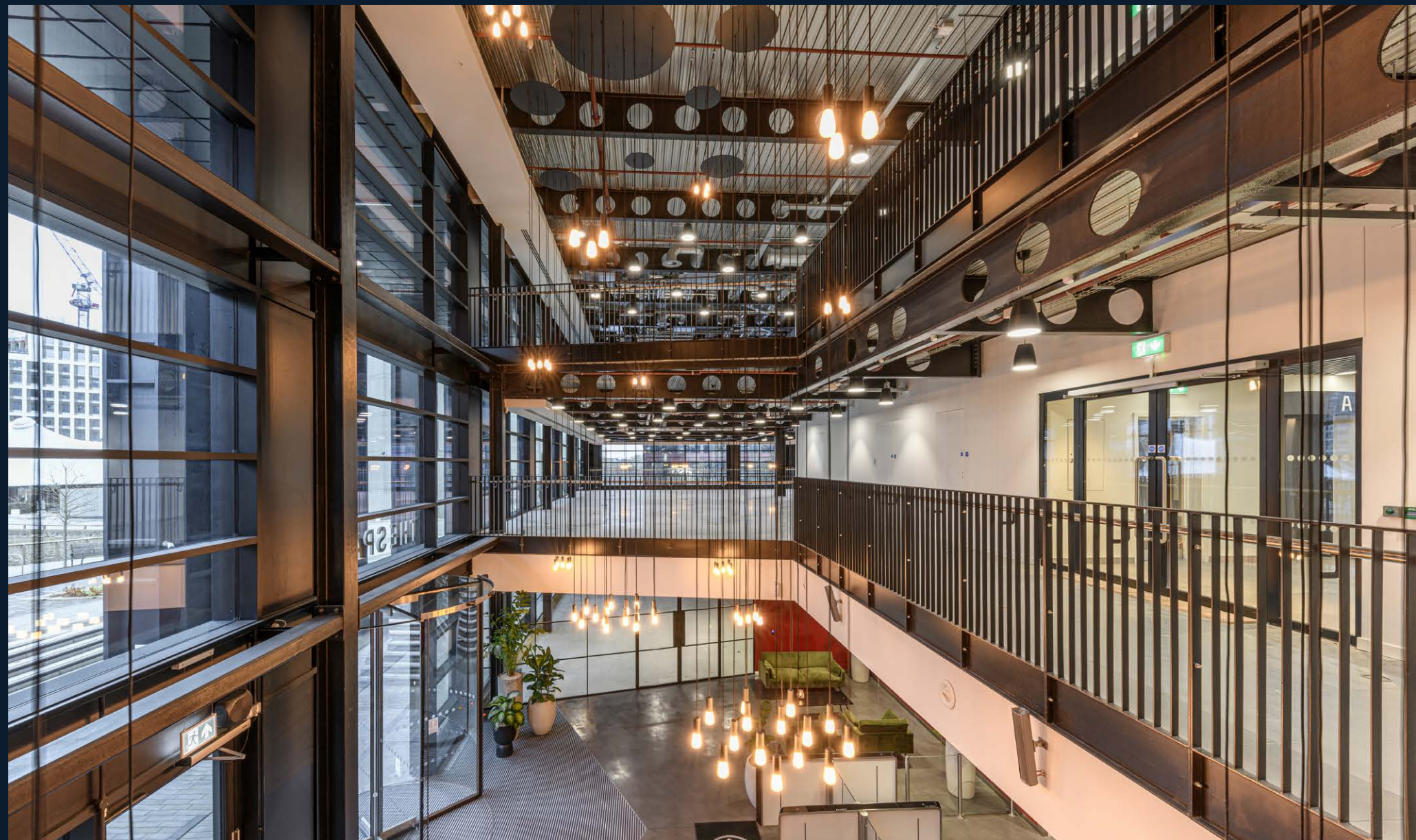
BRAND-NEW GRADE A OFFICE SPACE

FROM 2,400 SQ FT - 27,152 SQ FT

The Spark sits at the heart of Newcastle Helix within Newcastle's prime office pitch. The building is home to several high profile occupiers including Womble Bond Dickinson, Leonardo Labs, Nexus and the Audit Commission.

The Spark provides 105,906 sq ft of Grade A office accommodation together with cutting edge end of journey amenities, including a dedicated secure cycle store and high quality male and female shower and changing facilities.

Exciting ideas spark from great connections available across the Helix site. That's why The Spark champions a thriving, collaborative environment at all turns.



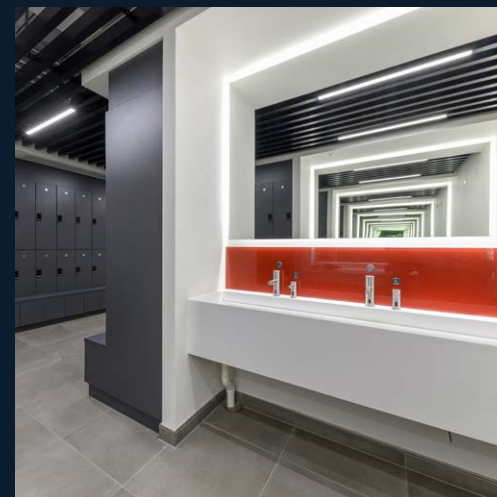
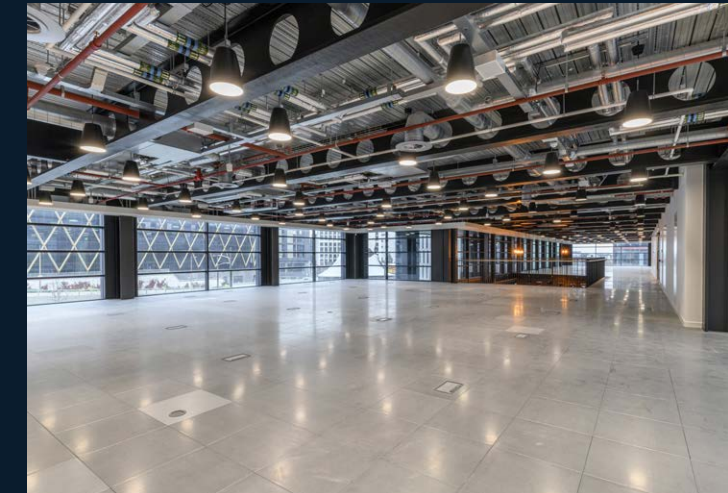
THE
SPARK



RECEPTION

THE
SPARK

MAIN FEATURES



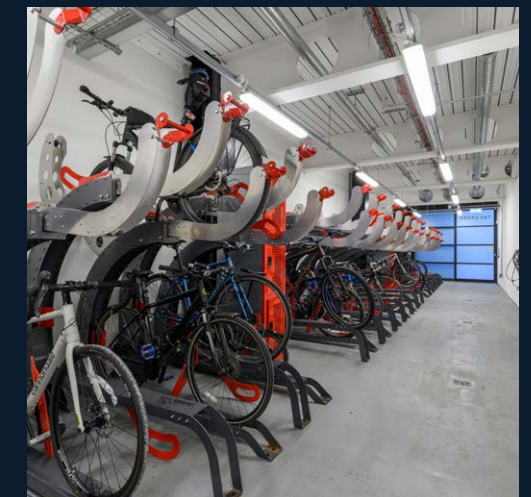
FLEXIBLE
WORKING
SPACE
FOR THE MODERN
WORKER

BREEAM
EXCELLENT

EPC
RATING A

POWERED BY
THE DISTRICT
ENERGY
CENTRE

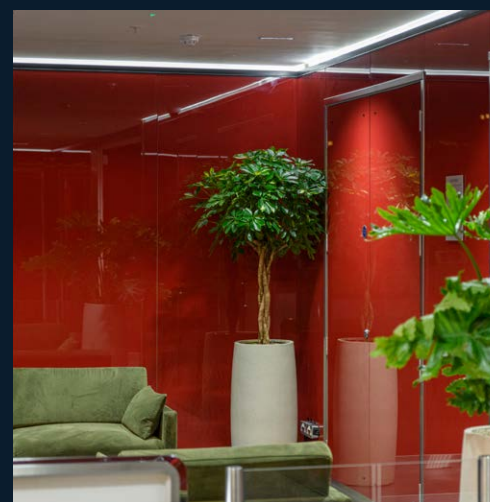
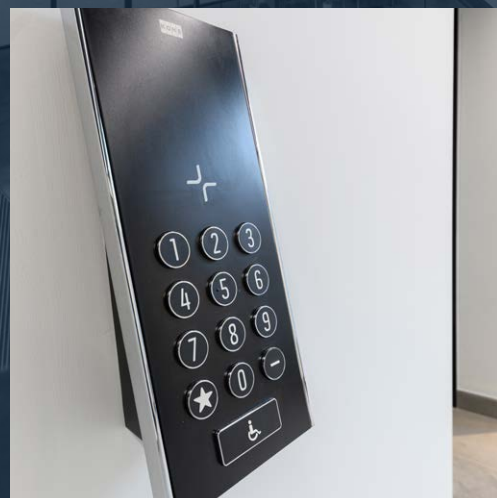
GRADE A
OFFICE SPACE
FROM 2,400 SQ FT
TO 27,152 SQ FT

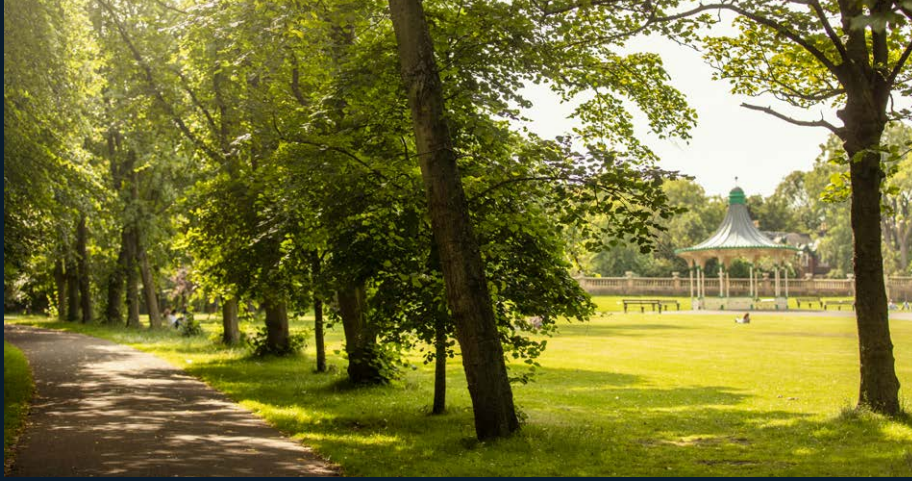


CUTTING-EDGE
AMENITIES

E-BIKE
CHARGING
ON SITE

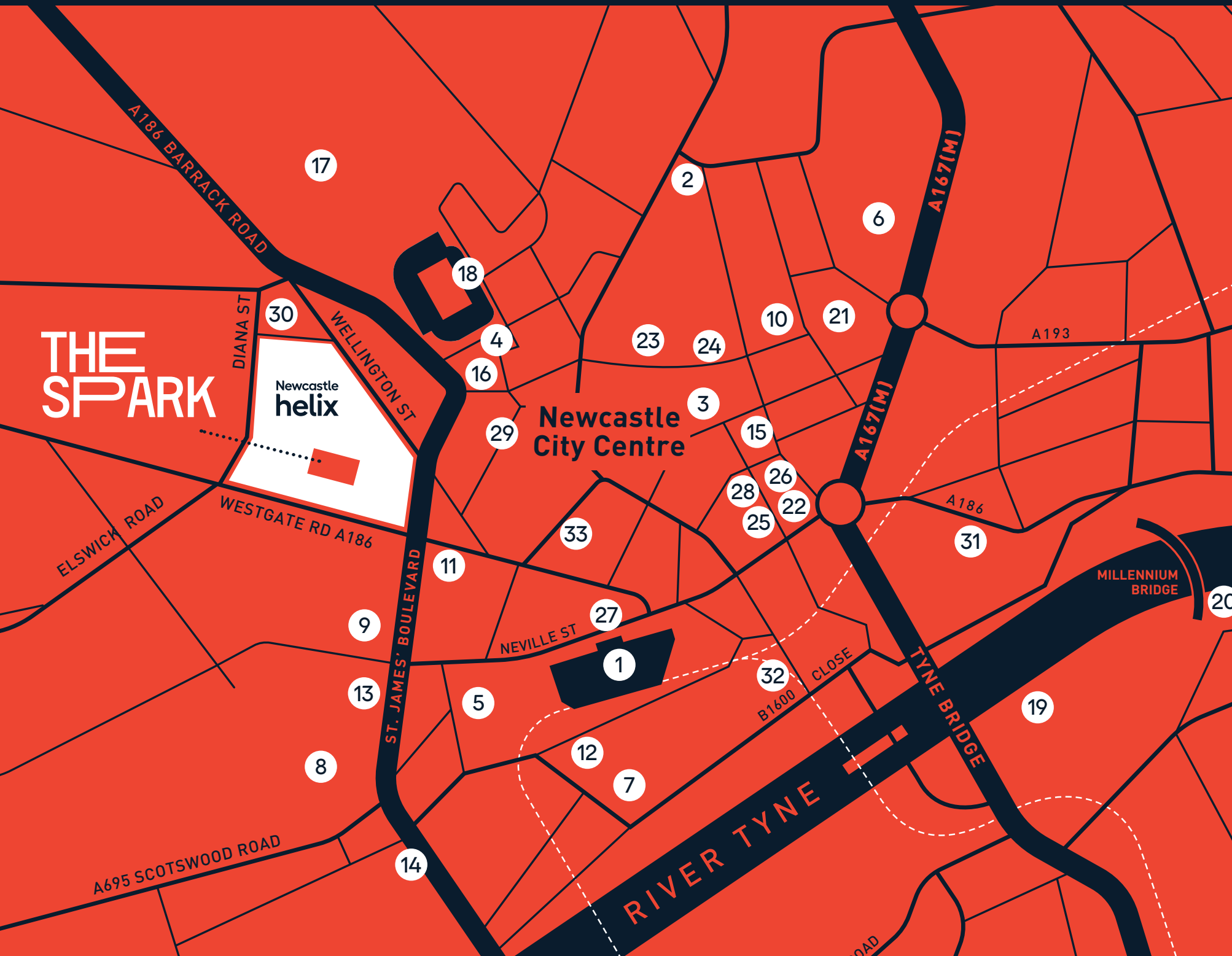
ACCESS TO
EVENT AND
CAFÉ SPACE
ACROSS WIDER
HELIX SITE





Leazes Park

LOCATION



TRANSPORT

- 1 Newcastle Central Station
- 2 Haymarket Metro & Bus Interchange
- 3 Monument Metro Station
- 4 St James Metro Station

EDUCATION

- 5 International Centre for Life
- 6 Northumbria University
- 7 North East Futures UTC
- 8 Newcastle College
- 9 Discovery Museum
- 10 City Library
- 11 Dance City

LEISURE & RETAIL

- 12 Crowne Plaza
- 13 Lane 7
- 14 Metro Radio Arena
- 15 Theatre Royal
- 16 Northern Stage
- 17 Leazes Park
- 18 St James' Park
- 19 The Glasshouse International Centre for Music
- 20 Baltic Centre for Contemporary Art
- 21 Laing Art Gallery
- 22 Grey Street
- 23 Eldon Square

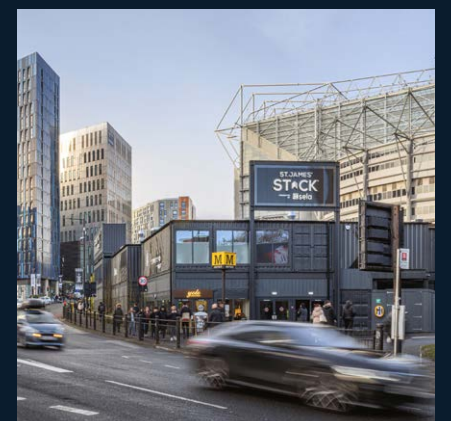
RESTAURANTS

- 24 The Botanist
- 25 All Bar One
- 26 Decantus
- 27 Pink Lane Coffee
- 28 Blake's
- 29 China Town
- 30 The Earl of Pitt Street
- 31 Café 21
- 32 House of Tides
- 33 Social Bird

Newcastle Central Station



The Stack and St James' Park



NEWCASTLE CITY CENTRE

Key walking times

5 min **St James' Park**
(Home to Newcastle United FC)

10 min Newcastle Central Station

8 min Eldon Square Shopping Centre

15 min Newcastle Quayside

Haymarket
11 min walk

Leazes
Park

Northumberland Street

Eldon Square Shopping Centre
8 min walk

St James' Park home to Newcastle United Football Club



Monument
10 min walk



Baltic Centre for Contemporary Art

Grey Street

Quayside

Newcastle
University
Business School

Millennium Bridge

Newcastle
helix

The Glasshouse
International Centre
for Music

| Tyne Bridge

Hadrian's Tower

**Newcastle
Central
Station**
10 min walk



**Newcastle
Int. Airport
(6.8 miles)**

THE SPARK

**A1 Motorway
North & South
(3.5 miles)**

THE
SPARK

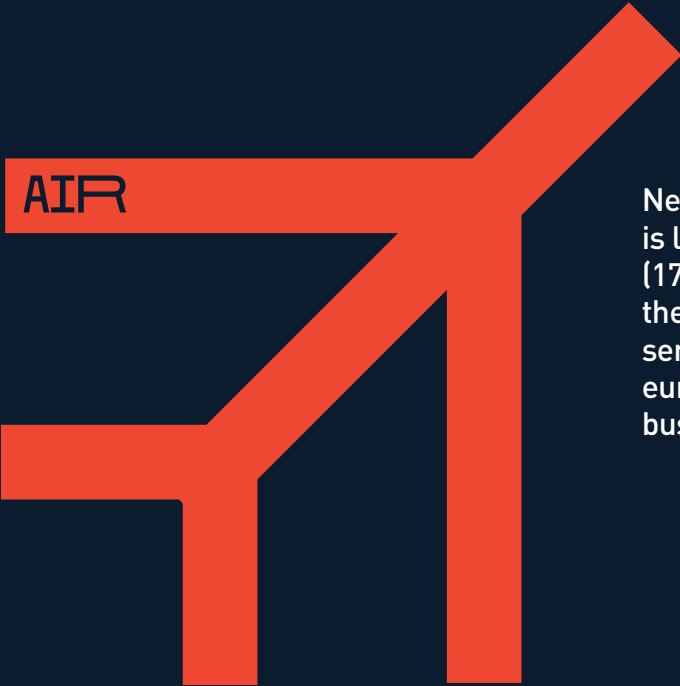
FIRST
FLOOR



WALKING TIMES

Newcastle Helix’s central location places the city’s amenities within easy walking distance.

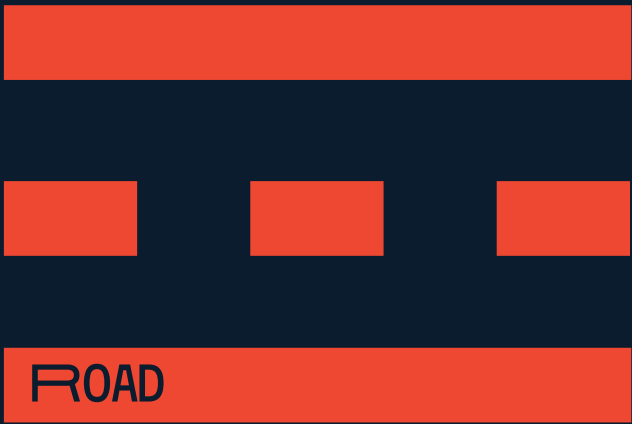
Newcastle Central Station	10 mins
St James’ Park (Home to Newcastle United FC)	5 mins
Eldon Square Shopping Centre	8 mins
Newcastle Quayside	15 mins



Newcastle International Airport is located approximately 6.5 miles (17 minutes drive time) north west of the city centre. The airport provides services to over 80 destinations in europe and beyond allowing global businesses to easily connect.

CONNECT

CONNECT TO THE CITY, COUNTRY AND WORLD FROM THE SPARK.



TRAVEL TIMES / DISTANCES

Teesside	50 mins	42 miles
Leeds	1.50 hrs	97 miles
Edinburgh	2.18 hrs	119 miles
Glasgow	2.26 hrs	153 miles
Manchester	2.38 hrs	142 miles
London	4.46 hrs	290 miles
Aberdeen	4.24 hrs	251 miles



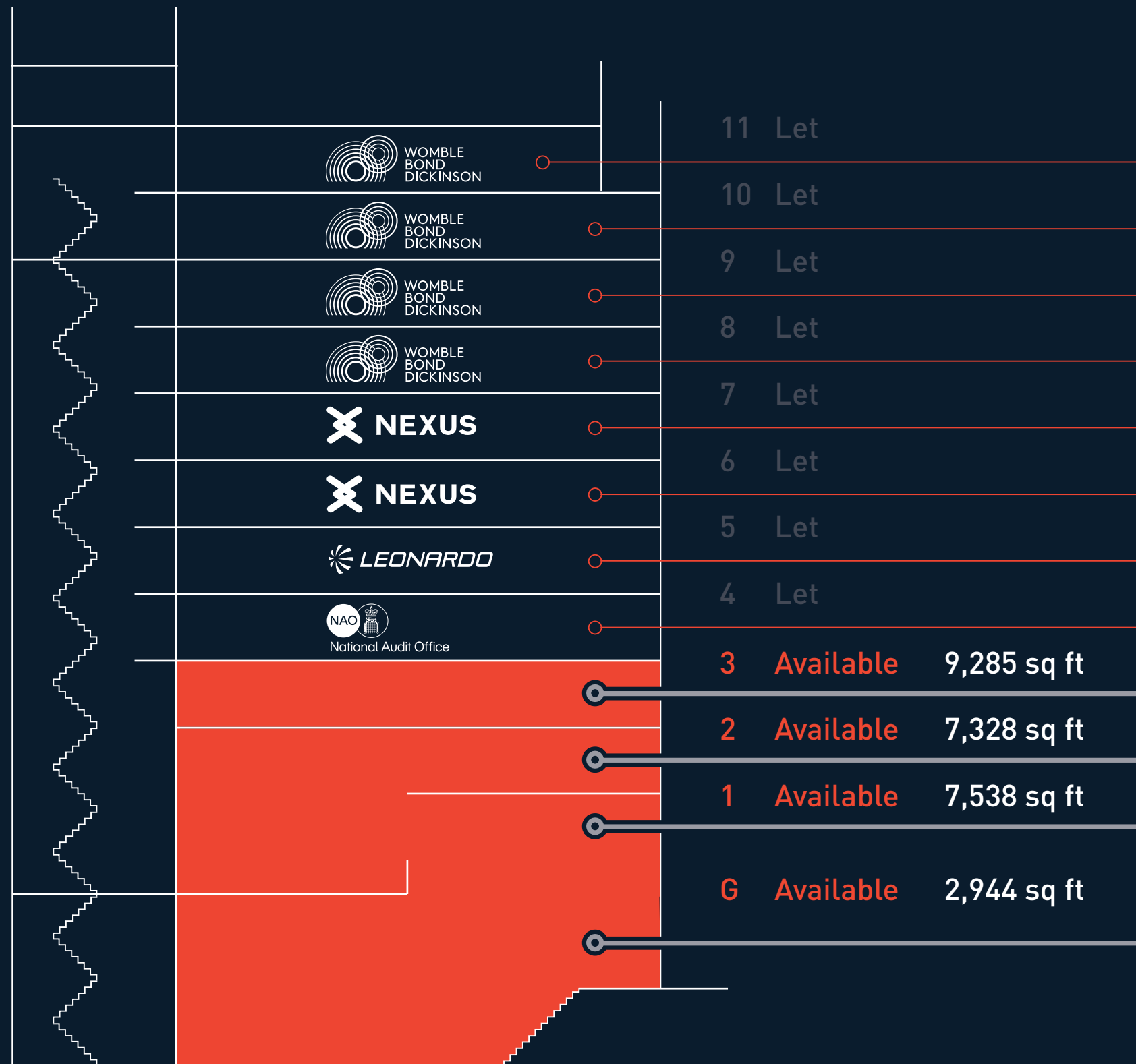
TRAVEL TIMES

Teesside	1 hr 18 mins
Leeds	1 hr 21 mins
Edinburgh	1 hr 20 mins
Glasgow	2 hrs 35 mins
Manchester	2 hrs 36 mins
London	2 hrs 40 mins
Aberdeen	4 hrs 15 mins



The Tyne and Wear Metro system provides a fast and efficient public transport system that serves 60 stations and is integrated with other public transport services.

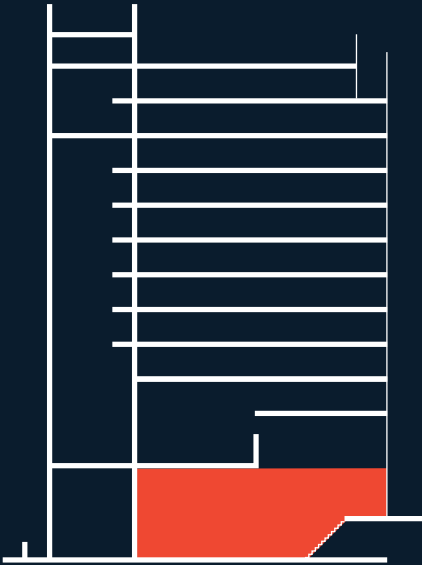
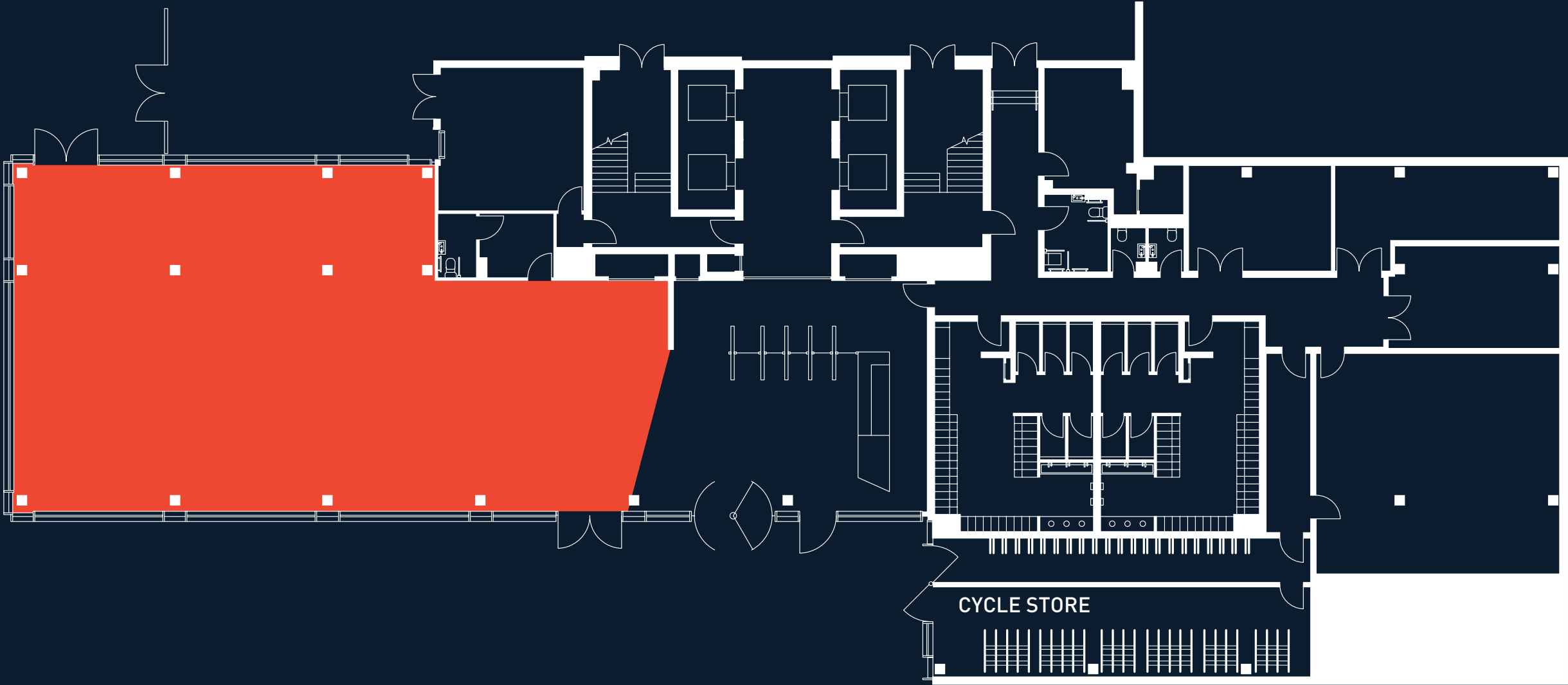
Newcastle Int. Airport	30 mins
------------------------	---------



THE STACK

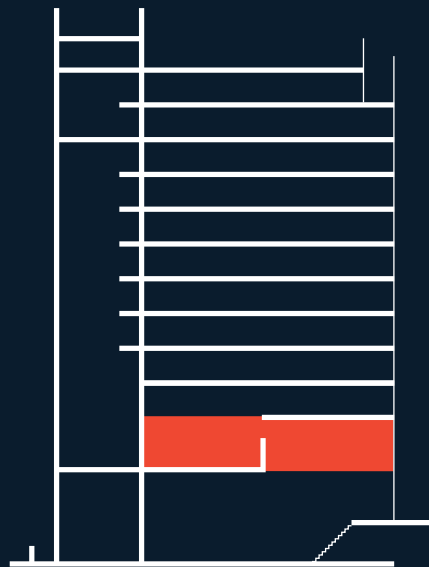
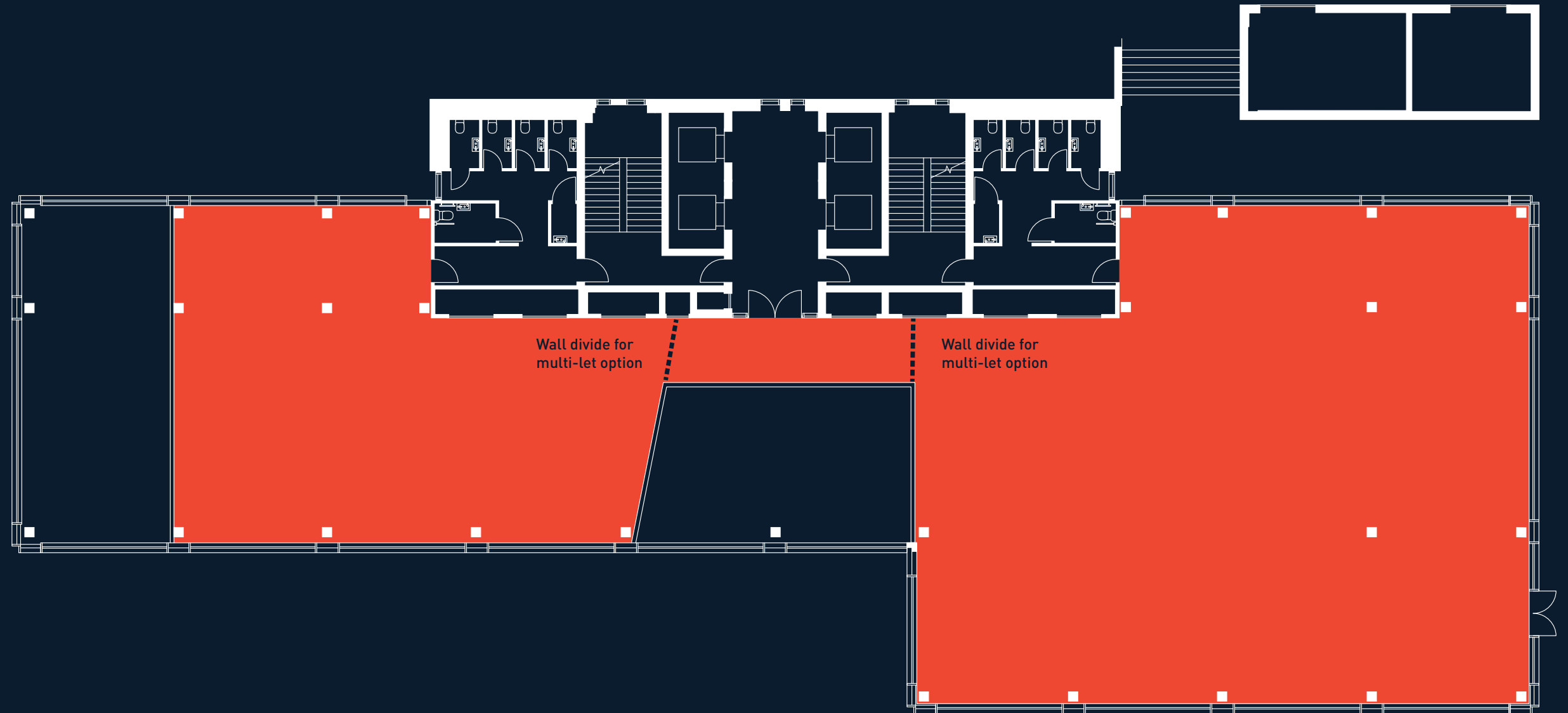
GROUND FLOOR

2,944 SQ FT



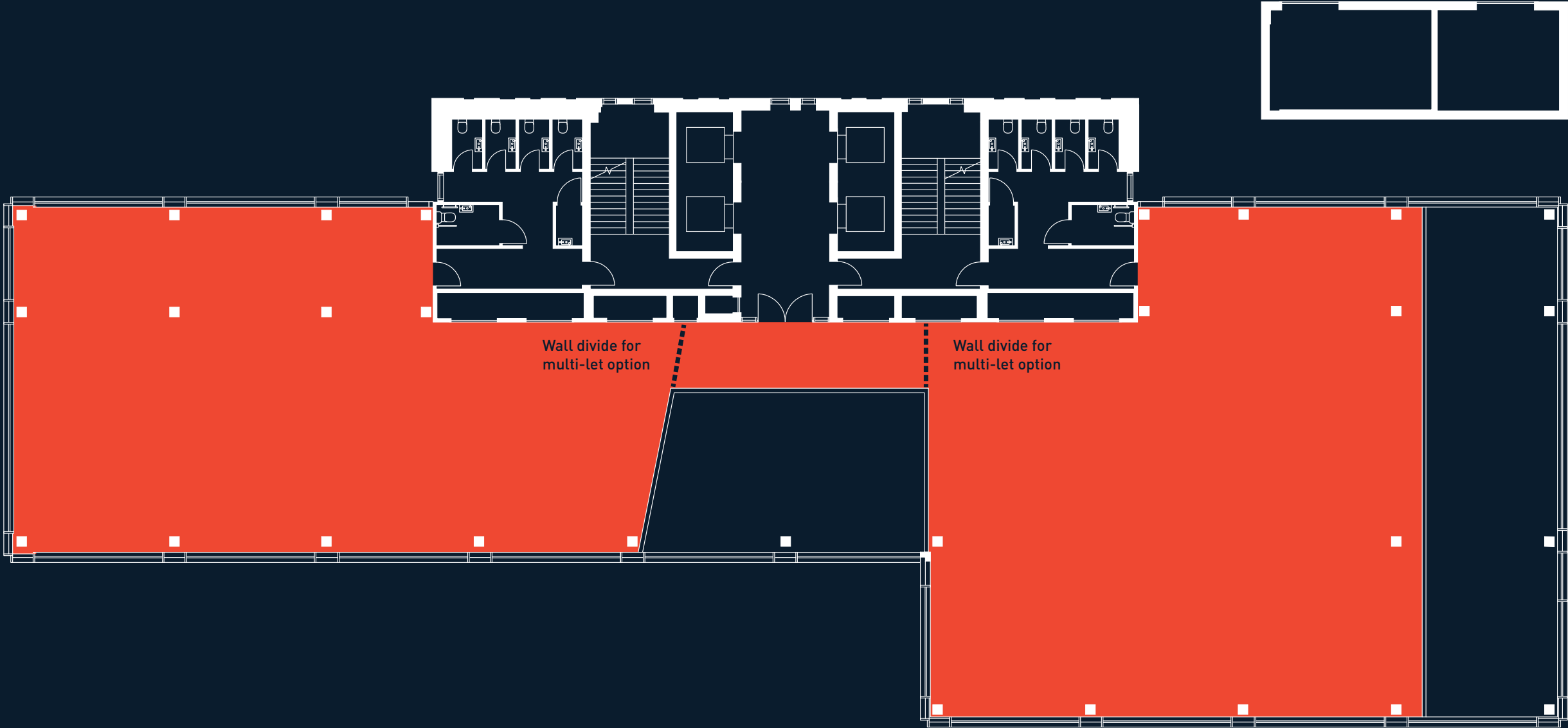
FIRST FLOOR

FROM 2,400 - 7,538 SQ FT



SECOND FLOOR

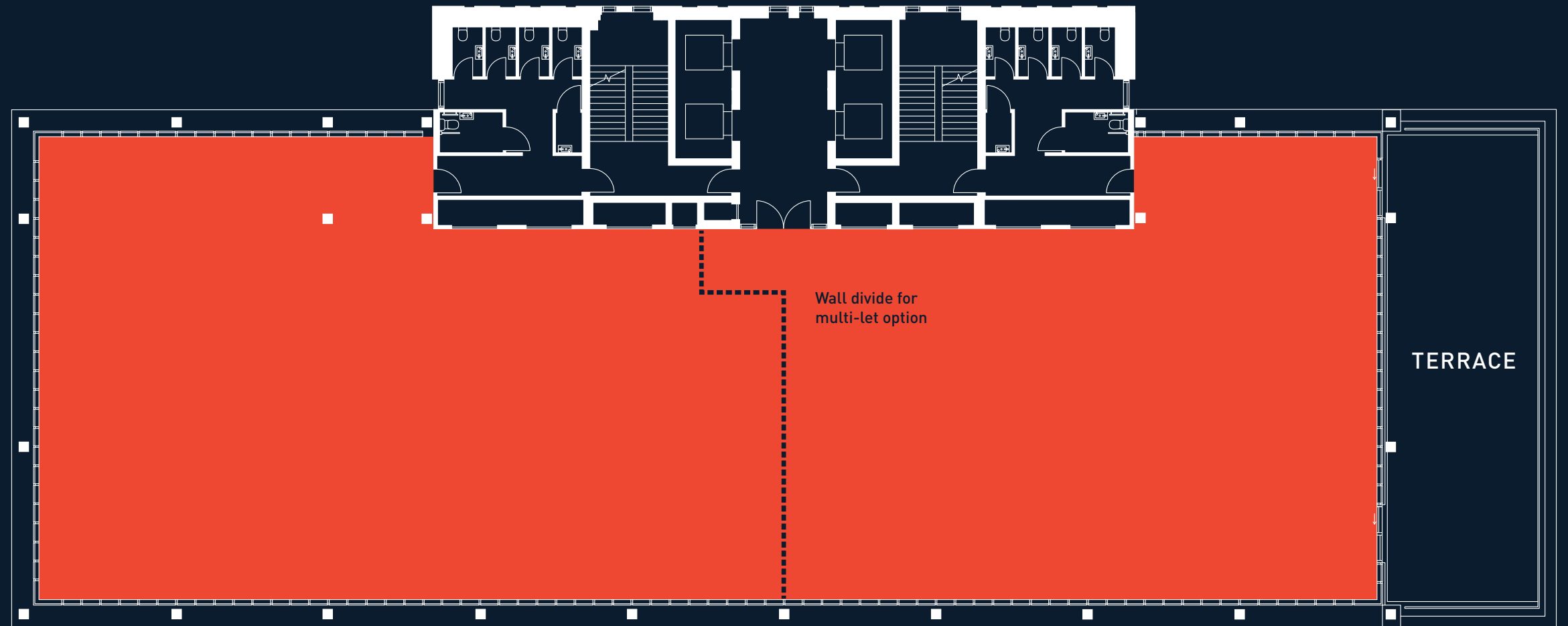
FROM 3,303 - 7,328 SQ FT



THIRD FLOOR

9,285 SQ FT

The floor is designed to be split and can be made available in a 30/70, 40/60 or 50/50 (illustrated) configuration, subject to availability.



THE
SPARK

THIRD
FLOOR

THE SPARK

CONTACT



GREG DAVISON

M: 07977 587 303

E: greg.davison@savills.com

EMMA YOUNG

M: 07977 097 760

E: emma.young@savills.com



TONY WORDSWORTH

M: 07785 916 936

E: tony.wordsworth@davisonyoung.com

ADAM LAWSON

M: 07825 113 277

E: adam.lawson@davisonyoung.com

THESPARKNEWCASTLE.CO.UK

The Spark, Newcastle Helix, St James' Boulevard, Newcastle upon Tyne NE4 5DE

Savills, their clients and any joint agents give notice that: 1. They are not authorised to make or give any representations or warranties in relation to the property either here or elsewhere, either on their own behalf or on behalf of their client or otherwise. They assume no responsibility for any statement that may be made in these particulars. These particulars do not form part of any offer or contract and must not be relied upon as statements or representations of fact. 2. Any areas, measurements or distances are approximate. The text, photographs and plans are for guidance only and are not necessarily comprehensive. It should not be assumed that the property has all necessary planning, building regulation or other consents and Savills have not tested any services, equipment or facilities. Purchasers must satisfy themselves by inspection or otherwise. March 2025

Newcastle
helix