

THE DEPARTMENT

GRADE A OFFICE ACCOMMODATION

LIVERPOOL CITY CENTRE

www.thedepartment-liverpool.co.uk

ENTER →



THE BUILDING

The Department includes the redevelopment of the former Lewis's Department Store one of Liverpool's most iconic landmark buildings situated on the corner of Renshaw Street and Ranelagh Street.

A comprehensive programme of redevelopment and remodelling has recently been completed and the building now provides 75,000 sq ft of Grade A offices in floor plates ranging from 15,500 sq ft to 17,750 sq ft which are arranged over ground and 5 upper floors.

The building has a stunning newly created 8 storey atrium and reception area with direct access off Renshaw Street. At ground floor level the atrium is accessed via a contemporary reception & entrance hall which includes a new reception desk, lighting, artwork & visitor waiting area and 3 new passenger lifts which serves each of the office floors.

HOME

FACADE

THE BUILDING

ACCOMMODATION

FLOOR PLANS, SCHEDULE & SPECIFICATION

GALLERY

CIRCUS

LOCATION

LIVERPOOL

CONNECTIVITY

CONTACT

FIRST FLOOR OFFICES

The first floor office accommodation extends to a net internal area of **17,610 sq ft** providing one of the largest floor plates in the City Centre that has been designed to offer flexible, light and airy space to meet with modern occupier standards.

The comprehensive redevelopment works have been sympathetic to the original architectural features of the building. Retained classical Greek style stone columns and classical cornice moulded ceilings have been combined with fully accessible raised floors, floor mounted 4 pipe fan coil air conditioning and suspended low energy fluorescent lighting.

The floors are available as a whole but are capable of sub-division to provide smaller suites from 8,000 sq ft.

[HOME](#)

[FACADE](#)

[THE BUILDING](#)

[ACCOMMODATION](#)

[FLOOR PLANS, SCHEDULE & SPECIFICATION](#)

[GALLERY](#)

[CIRCUS](#)

[LOCATION](#)

[LIVERPOOL](#)

[CONNECTIVITY](#)

[CONTACT](#)

[First floor space plan](#)

[View Second Floor](#)

SECOND FLOOR OFFICES

The second floor office accommodation extends to a net internal area of **17,750sq ft** of Grade A offices which include fully accessible raised floors, a ceiling mounted 4 pipe fan coil air conditioning system and recessed low energy LG7 Luminaires.

The floors are available as a whole but are capable of sub-division to provide smaller suites from 8,000 sq ft.

[Second floor space plan](#) 

[HOME](#)

[FACADE](#)

[THE BUILDING](#)

[ACCOMMODATION](#)

[FLOOR PLANS, SCHEDULE & SPECIFICATION](#)

[GALLERY](#)

[CIRCUS](#)

[LOCATION](#)

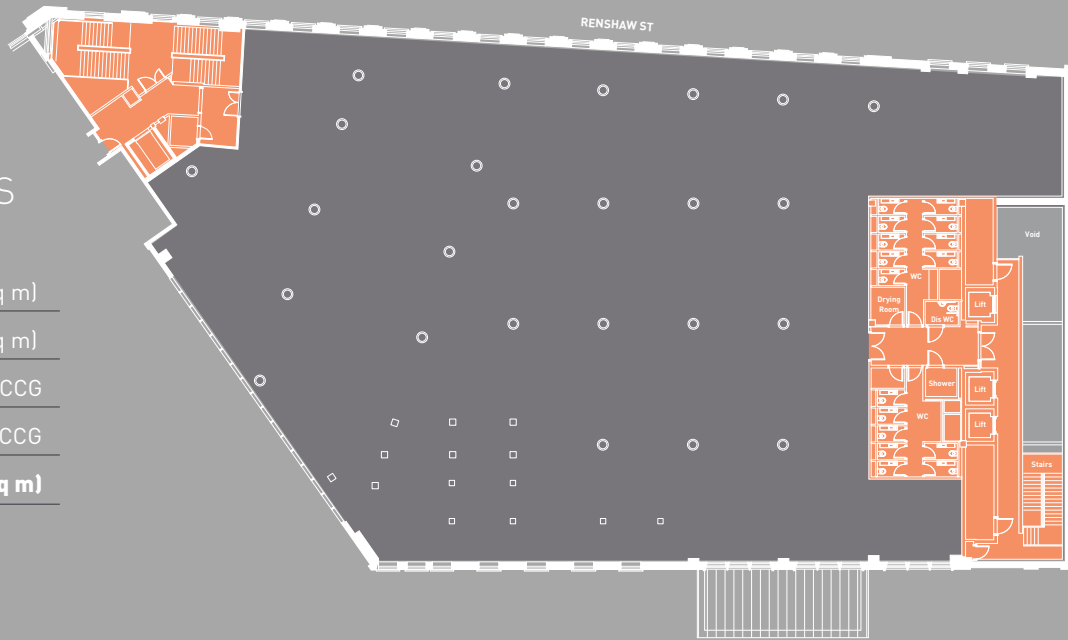
[LIVERPOOL](#)

[CONNECTIVITY](#)

[CONTACT](#)

[View First Floor](#) 

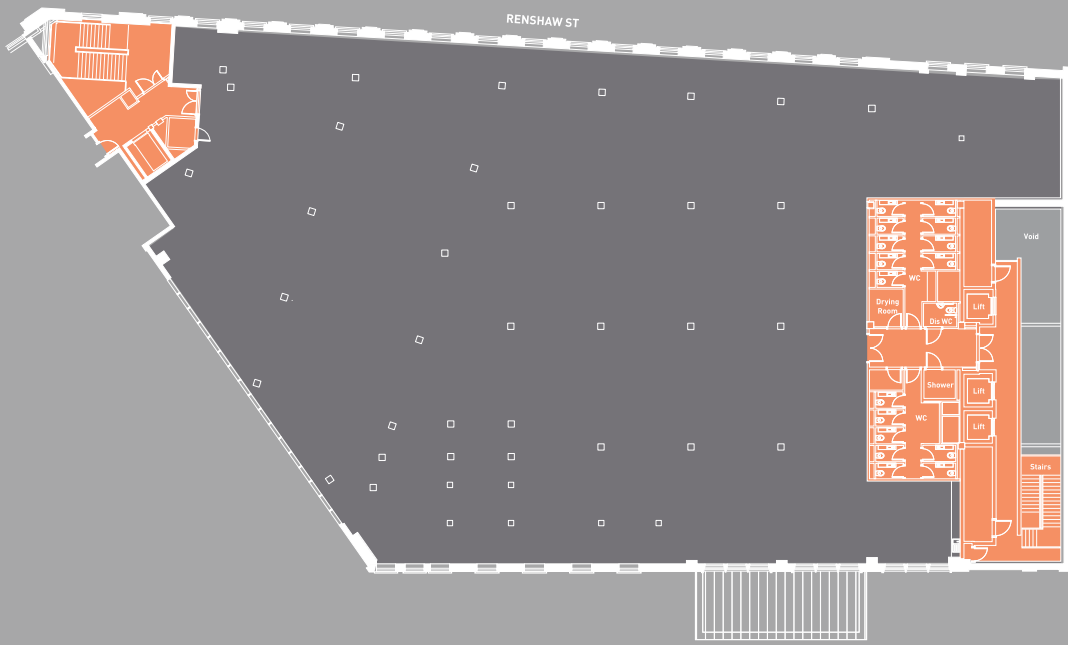
FIRST FLOOR



SCHEDULE OF NET INTERNAL FLOOR AREAS

| | |
|--------------|---------------------------------|
| 1st floor | 17,610 sq ft (1,636 sq m) |
| 2nd floor | 17,750 sq ft (1,649 sq m) |
| 3rd floor | Let to Liverpool NHS CCG |
| 4th floor | Let to Liverpool NHS CCG |
| Total | 35,360 sq ft (3,285sq m) |

SECOND FLOOR



SPECIFICATION

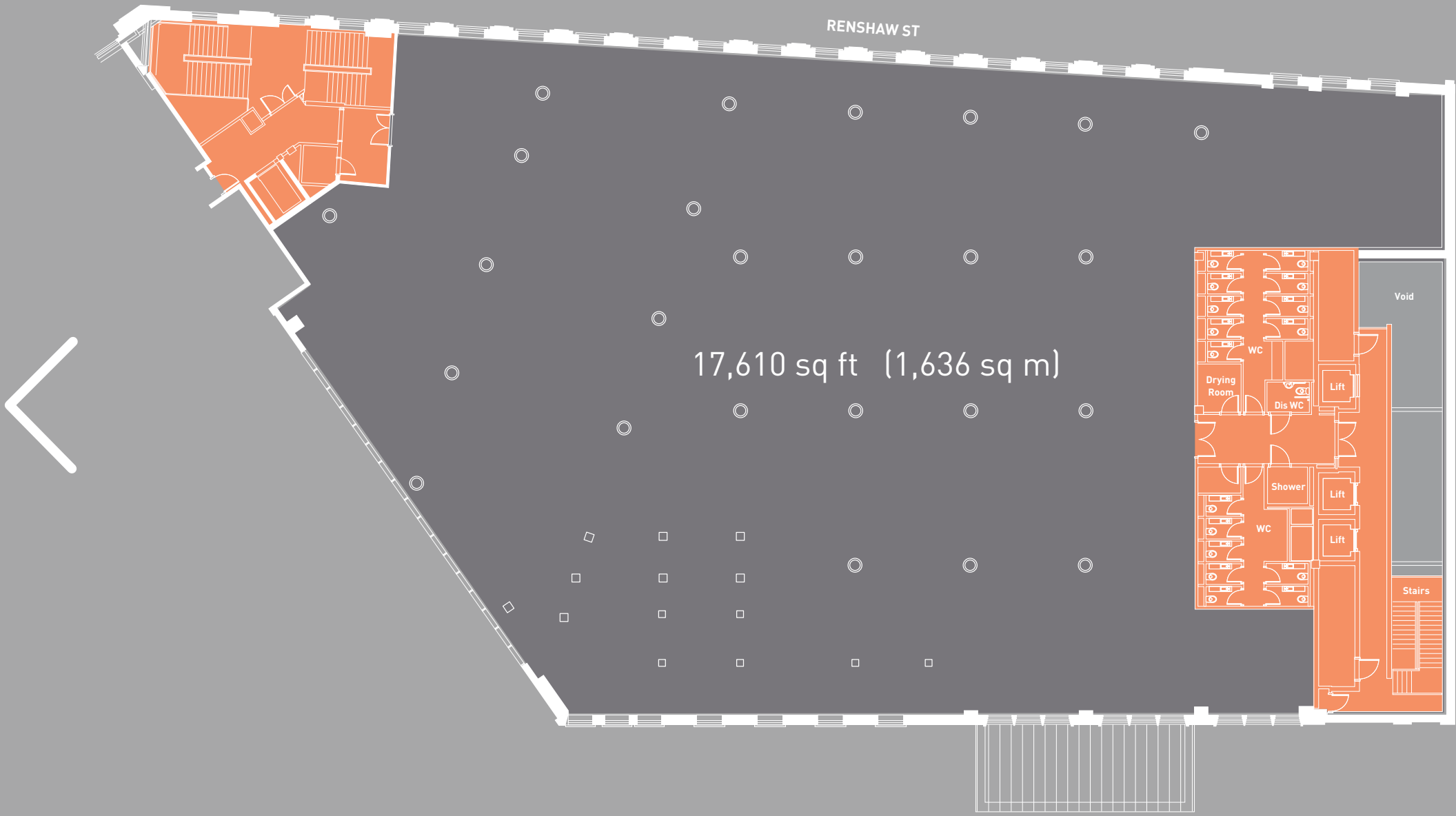
- BREEAM "Very Good"
- EPC "C52"
- Stunning full height atrium
- Contemporary reception area & entrance hall
- Fully accessible raised floors
- 4 pipe fan coil air conditioning
- Suspended ceilings
- Low energy LG7 lighting
- Male, Female & disabled w/c & shower facilities
- Dedicated bicycle storage
- Self contained loading bay to the rear of the building
- 3 x 13 person passenger lifts

- HOME
- FAÇADE
- THE BUILDING
- ACCOMMODATION
- FLOOR PLANS, SCHEDULE & SPECIFICATION
- GALLERY
- CIRCUS
- LOCATION
- LIVERPOOL
- CONNECTIVITY
- CONTACT

First floor space plans >

Second floor space plans >

FIRST FLOOR



RENSHAW ST

17,610 sq ft (1,636 sq m)

Void

Stairs

WC

Dis WC

Shower

WC

Lift

Lift

Lift

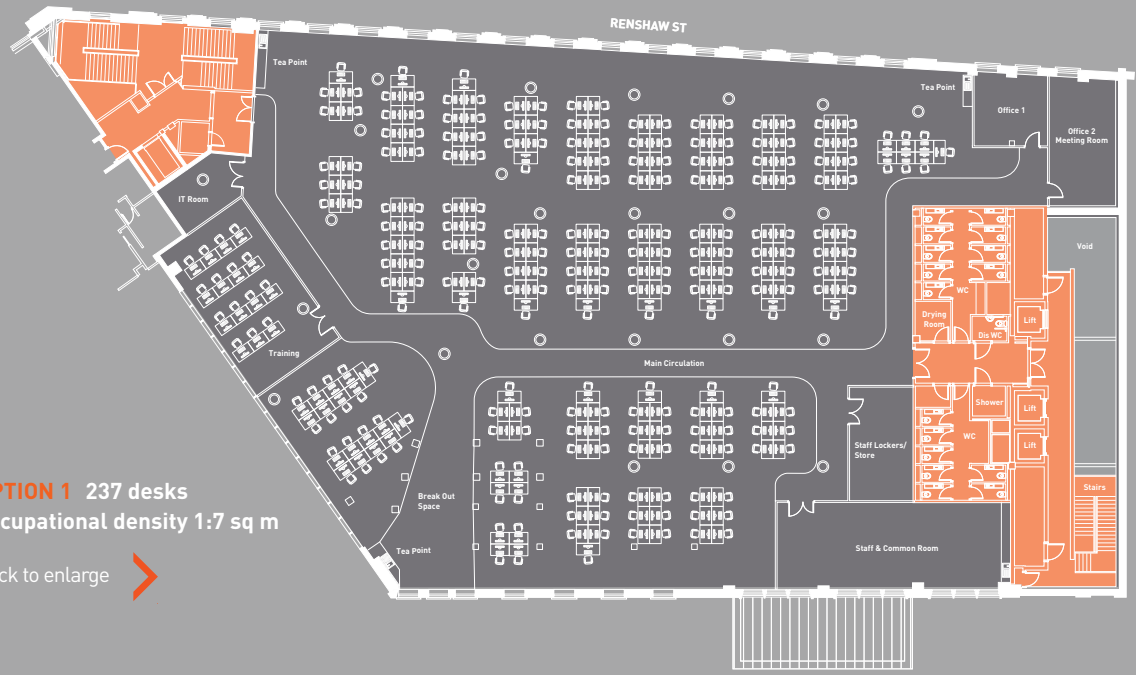
SECOND FLOOR

RENSHAW ST

17,750 sq ft (1,649 sq m)

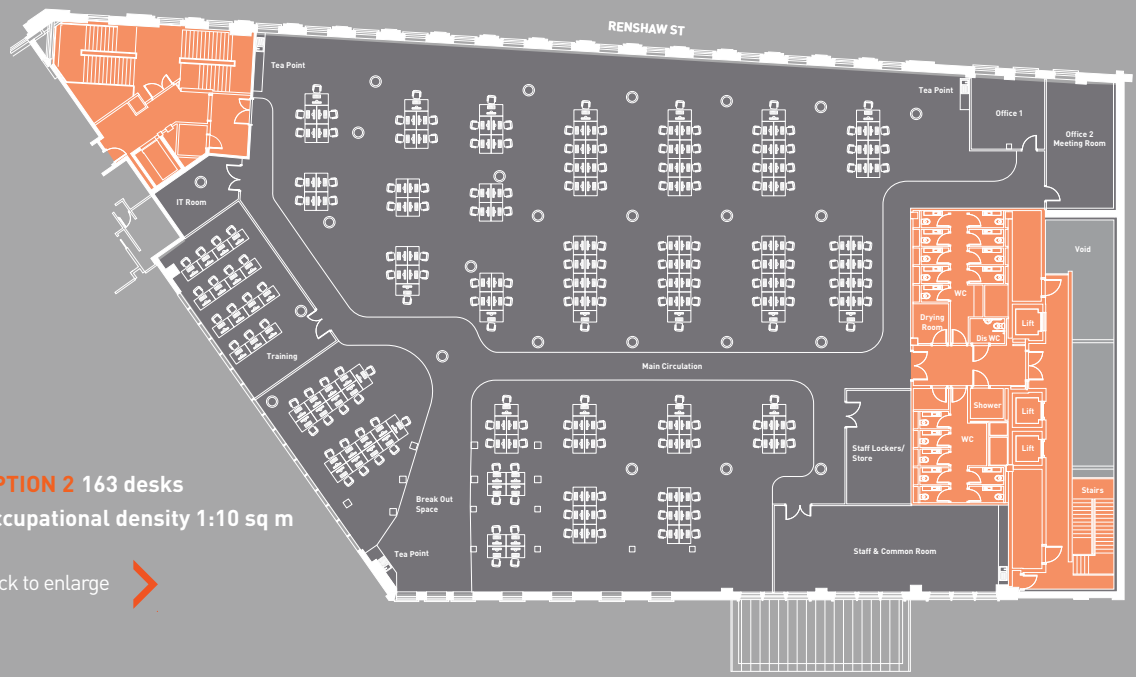


FIRST FLOOR




OPTION 1 237 desks
Occupational density 1:7 sq m

Click to enlarge 



OPTION 2 163 desks
Occupational density 1:10 sq m

Click to enlarge 

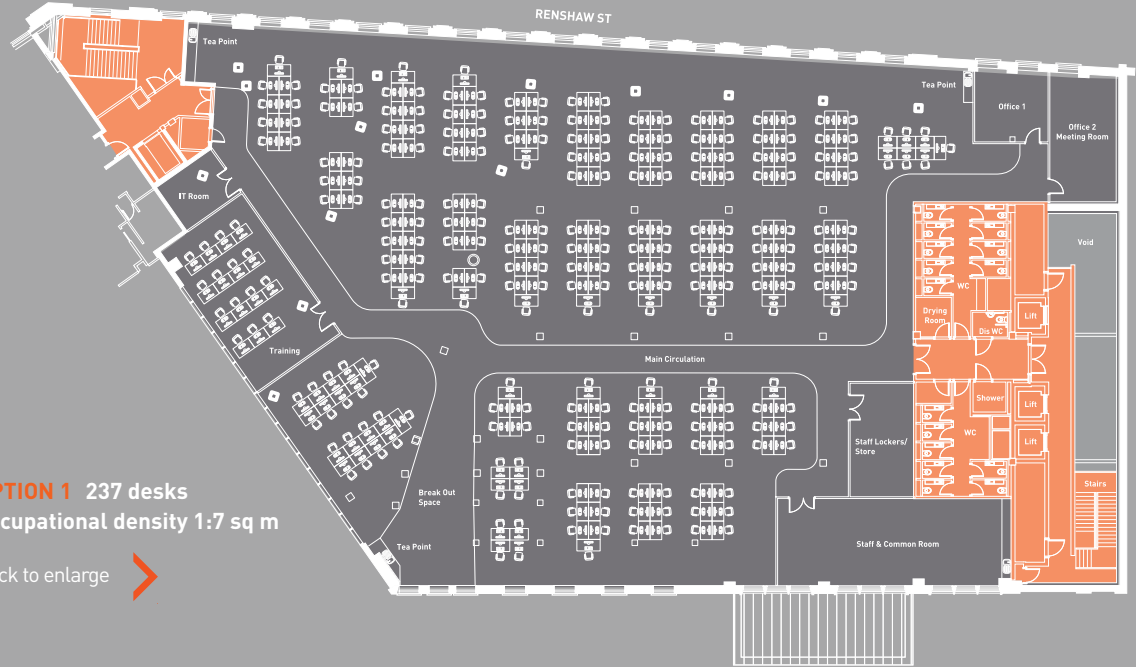
ILLUSTRATIVE SPACE PLANS

First floor 17,610 sq ft
(1,636 sq m)


These floors provide totally flexible office space allowing an incoming tenant to fit out to their own specific requirements.

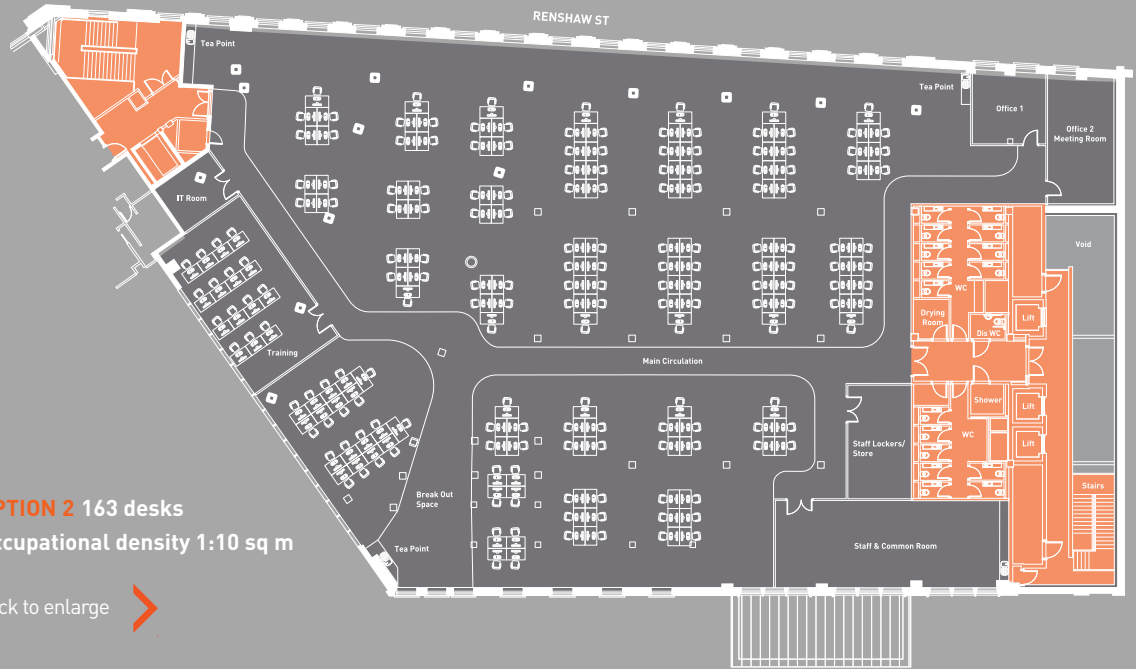
- HOME
- FACADE
- THE BUILDING
- ACCOMMODATION
- FLOOR PLANS, SCHEDULE & SPECIFICATION**
- GALLERY
- CIRCUS
- LOCATION
- LIVERPOOL
- CONNECTIVITY
- CONTACT

SECOND FLOOR




OPTION 1 237 desks
Occupational density 1:7 sq m

Click to enlarge 



OPTION 2 163 desks
Occupational density 1:10 sq m

Click to enlarge 

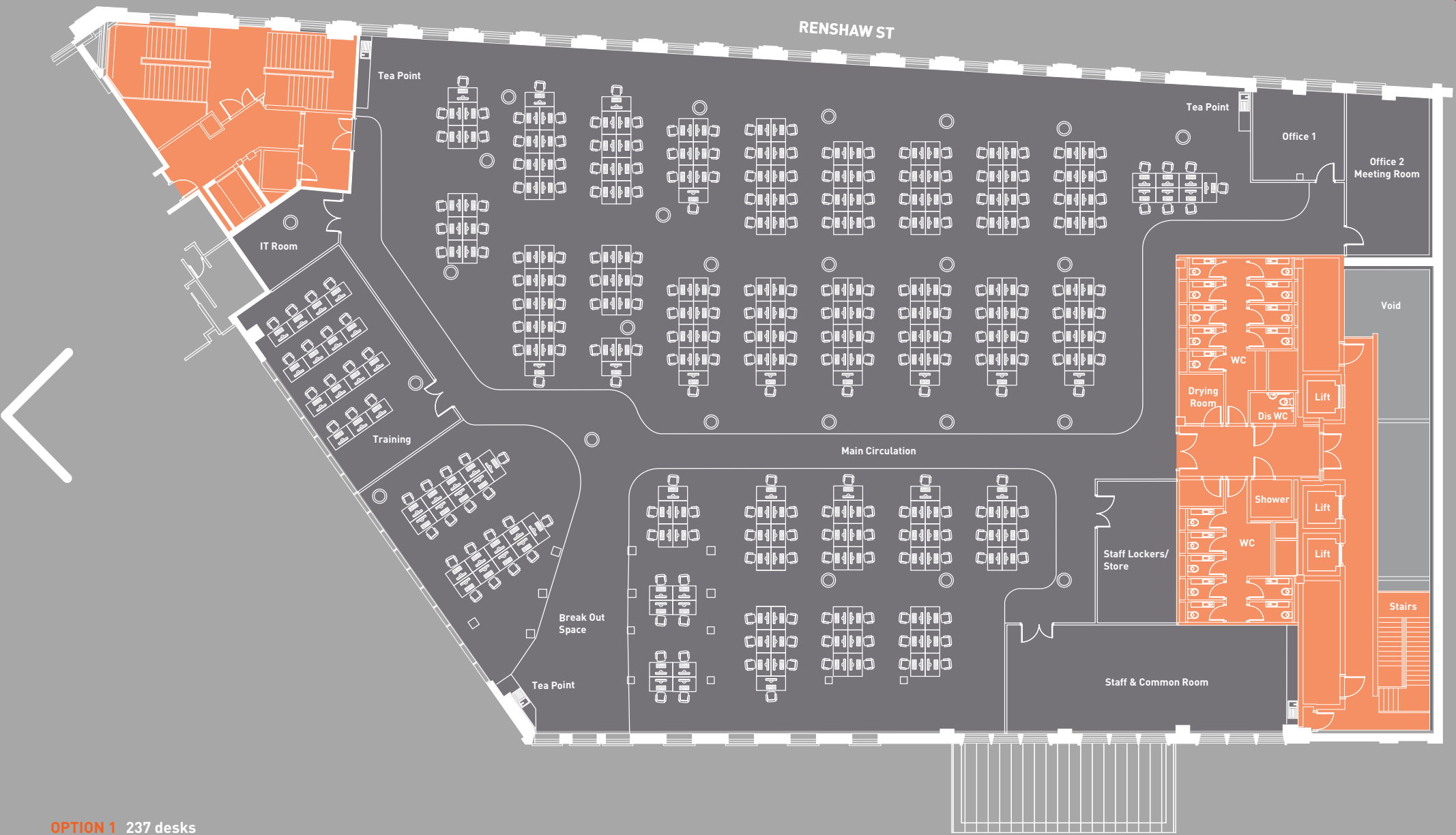
ILLUSTRATIVE SPACE PLANS

Second Floor 17,750 sq ft
(1,649 sq m)

These floors provide totally flexible office space allowing an incoming tenant to fit out to their own specific requirements.

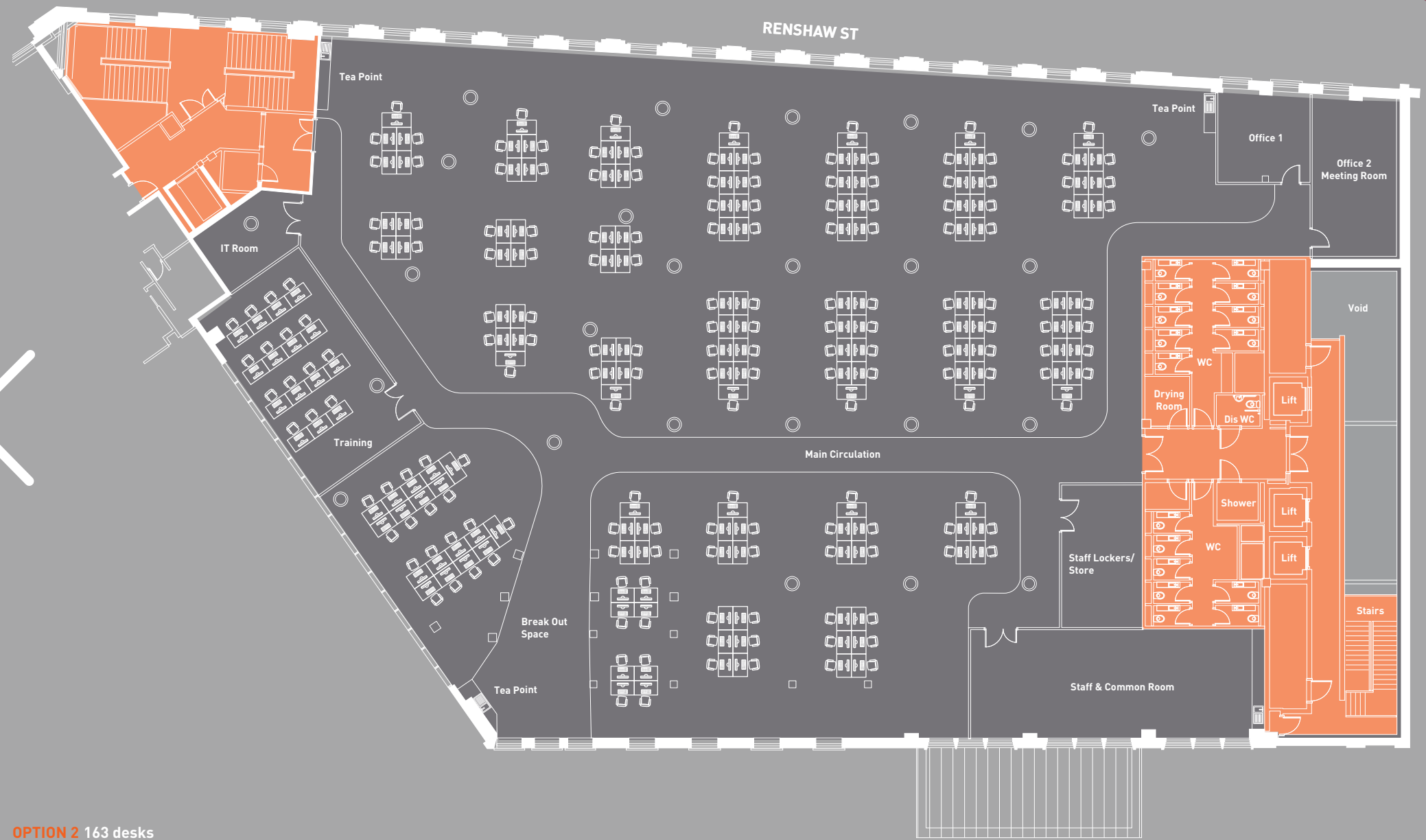
- HOME
- FACADE
- THE BUILDING
- ACCOMMODATION
- FLOOR PLANS, SCHEDULE & SPECIFICATION**
- GALLERY
- CIRCUS
- LOCATION
- LIVERPOOL
- CONNECTIVITY
- CONTACT

FIRST FLOOR OPTION 1



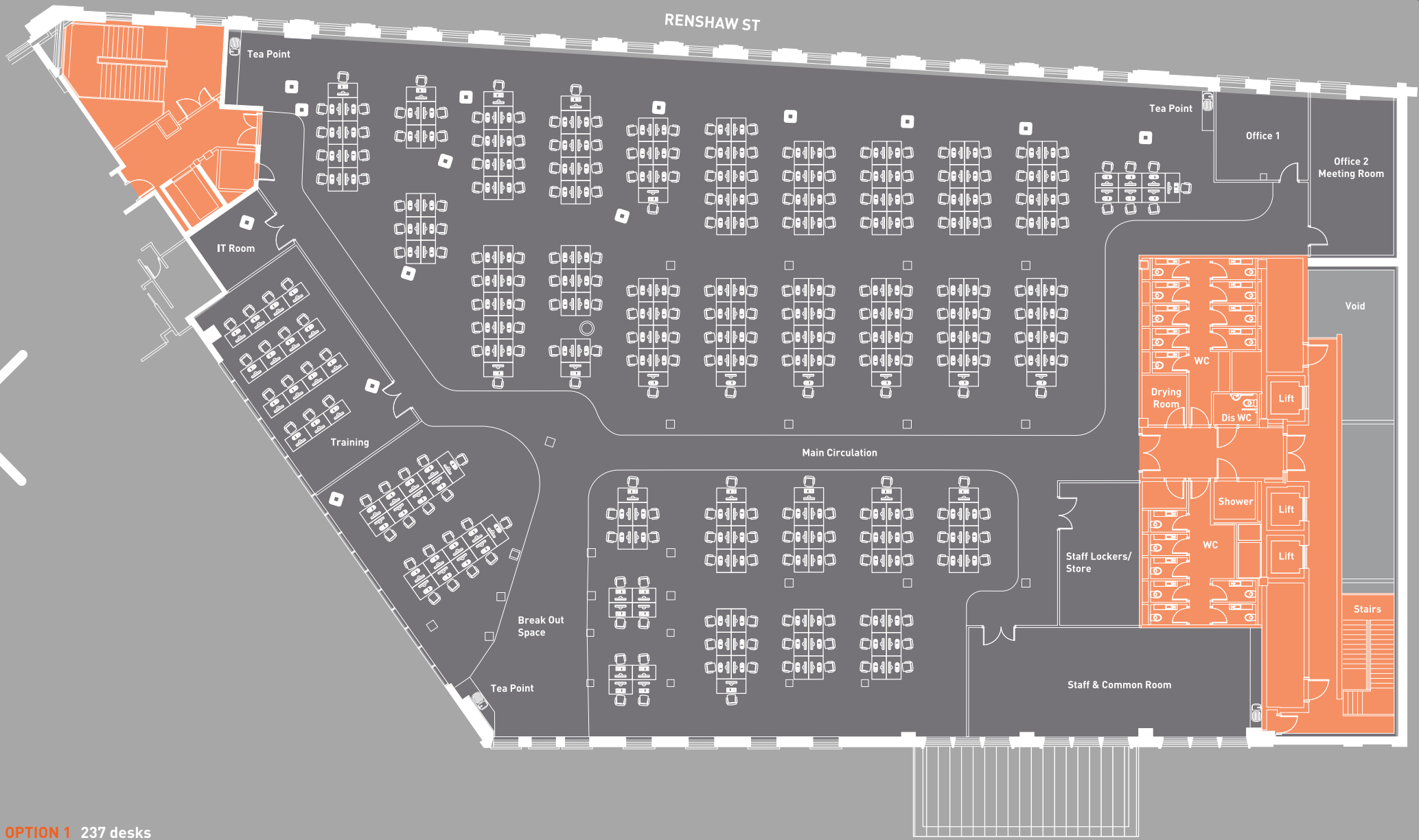
OPTION 1 237 desks
Occupational density 1:7 sq m

FIRST FLOOR OPTION 2



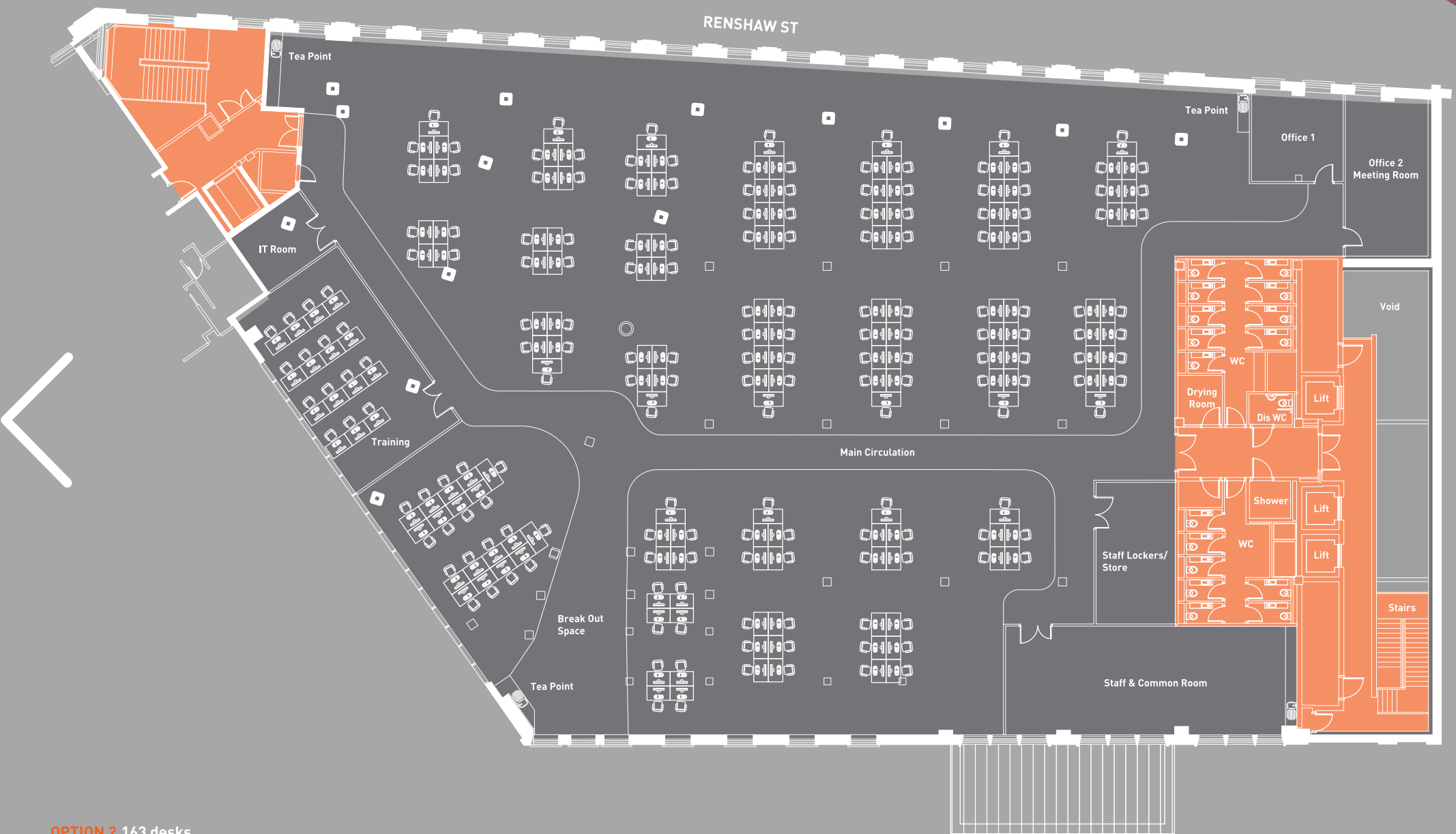
OPTION 2 163 desks
Occupational density 1:10 sq m

SECOND FLOOR OPTION 1

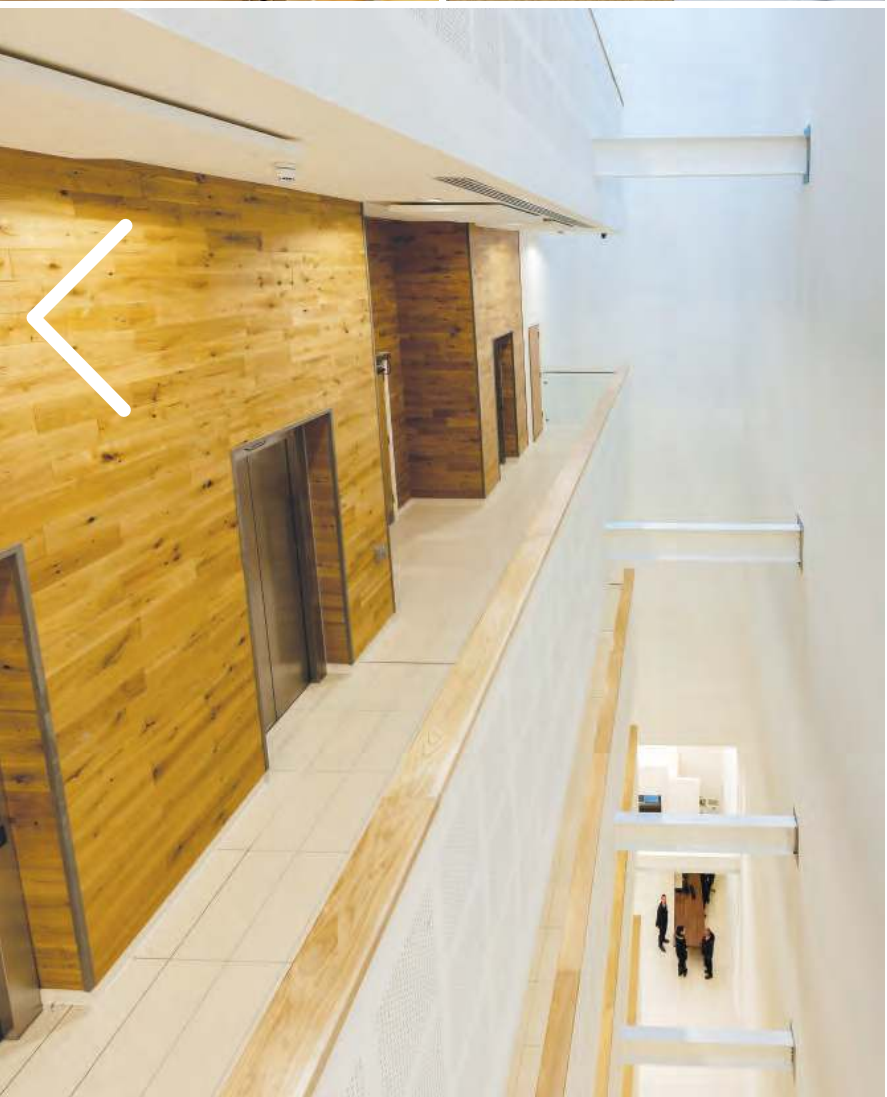


OPTION 1 237 desks
Occupational density 1:7 sq m

SECOND FLOOR OPTION 2



OPTION 2 163 desks
Occupational density 1:10 sq m



GALLERY

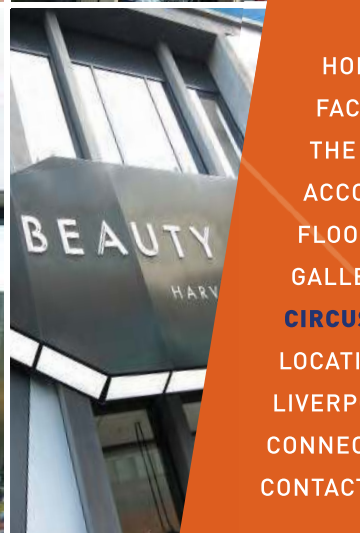
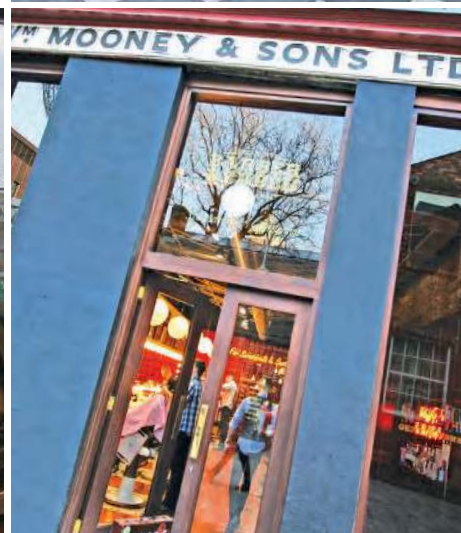
- HOME
- FACADE
- THE BUILDING
- ACCOMMODATION
- FLOOR PLANS, SCHEDULE & SPECIFICATION
- GALLERY**
- CIRCUS
- LOCATION
- LIVERPOOL
- CONNECTIVITY
- CONTACT



CIRCUS

The Department adjoins Circus, a new retail and leisure development. On completion the site will provide circa 275,000 sq ft of retail and leisure space over five floors, incorporating a cinema, restaurants, retail tenants, a 500 space multi storey car park operated by Q-Park, Pure Gym and an Adagio Aparthotel.


For further information, visit the Circus website:



- HOME
- FACADE
- THE BUILDING
- ACCOMMODATION
- FLOOR PLANS, SCHEDULE & SPECIFICATION
- GALLERY
- CIRCUS**
- LOCATION
- LIVERPOOL
- CONNECTIVITY
- CONTACT


City Centre Map



Click to enlarge 


Aerial View



Click to enlarge 

Detail Map



Click to enlarge 

THE DEPARTMENT

LOCATION

The Department is within one of Liverpool's most iconic buildings and is located in a prominent position on the corner of Renshaw Street which forms part of the City's Knowledge Quarter.

The building is extremely well located and is just a few minutes walk from Liverpool One and offers unrivalled transport links due to its proximity to Central Station and Liverpool Lime Street Station providing direct access to the Wirral and Northern Lines as well as mainline service connections to all major UK Towns and Cities.

Aerial View 

- HOME
- FACADE
- THE BUILDING
- ACCOMMODATION
- FLOOR PLANS, SCHEDULE & SPECIFICATION
- GALLERY
- CIRCUS
- LOCATION
- LIVERPOOL
- CONNECTIVITY
- CONTACT



RIVER MERSEY



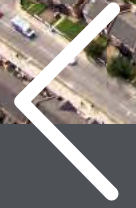
KEY

- 1 Echo Arena / BT Convention Centre / Liverpool Exhibition Centre
- 2 Albert Dock Complex
- 3 Liverpool Town Hall
- 4 St Georges Hall
- 5 Radio City Tower
- 6 Adagio Aparthotel
- 7 Novotel
- 8 Hilton Hotel
- 9 Marriott Hotel
- 10 Liner Hotel
- 11 Alma da Cuba
- 12 Tesco
- 13 Mowgli Street Food
- 14 Leaf Bar
- 15 Costa
- 16 Cafe Nero
- 17 Sainsburys (Central Shopping Centre)
- 18 Starbucks
- 19 Pure Gym
- 20 Villa Romana
- 21 Clayton Square Shopping Centre
- 22 Liverpool ONE
- 23 St John's Shopping Centre

MERSEYRAIL STATIONS

- Central Station
- James Street
- Lime Street and Mainline Station

--- Knowledge Quarter





LOCATION

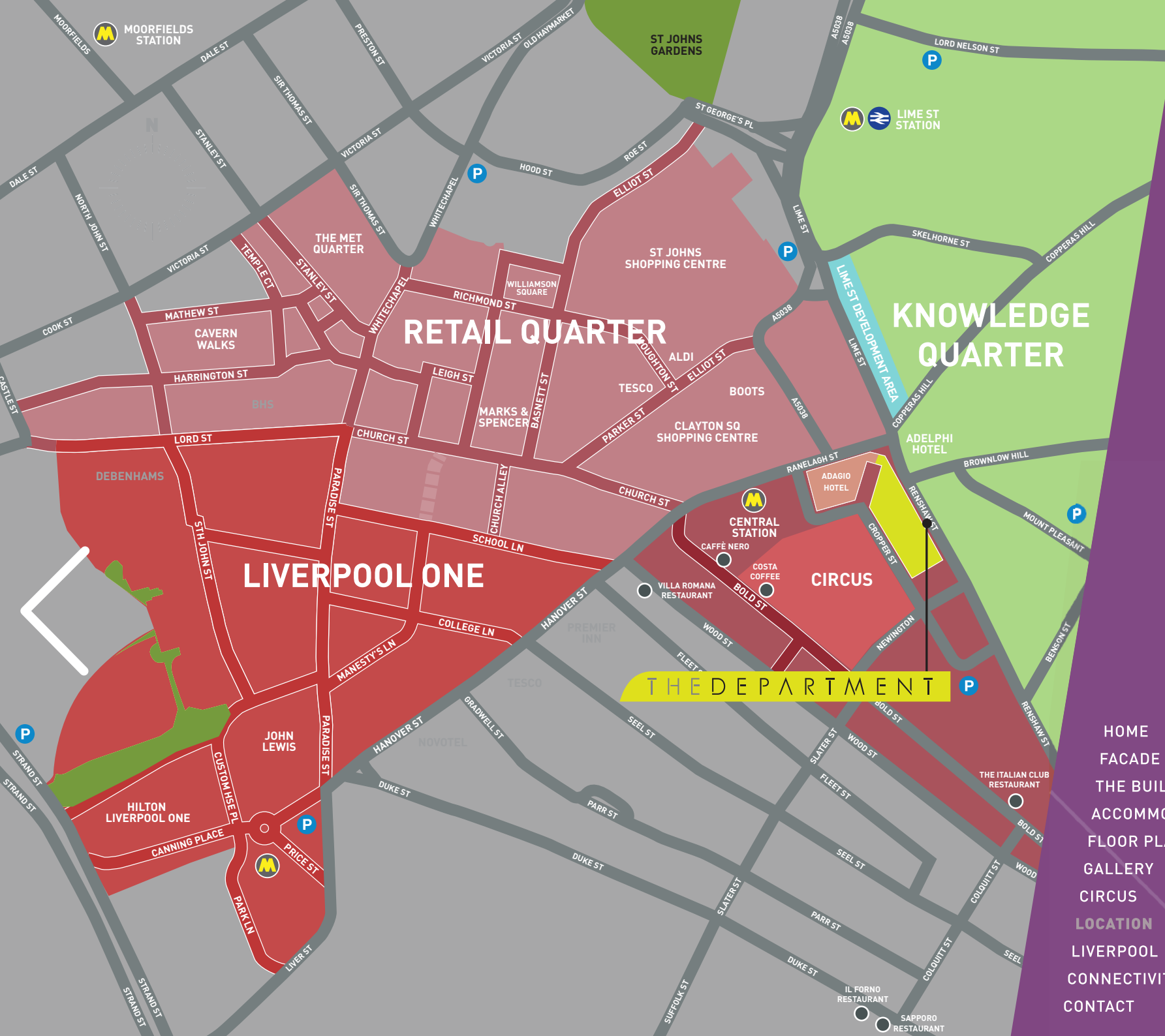
Detail Map 

CITY CENTRE MAP



THE DEPARTMENT

- HOME
- FACADE
- THE BUILDING
- ACCOMMODATION
- FLOOR PLANS, SCHEDULE & SPECIFICATION
- GALLERY
- CIRCUS
- LOCATION
- LIVERPOOL
- CONNECTIVITY
- CONTACT



LOCATION
 DETAIL MAP
 City Centre Map >

- HOME
- FACADE
- THE BUILDING
- ACCOMMODATION
- FLOOR PLANS, SCHEDULE & SPECIFICATION
- GALLERY
- CIRCUS
- LOCATION
- LIVERPOOL
- CONNECTIVITY
- CONTACT



LIVERPOOL

- Liverpool's Waterfront is a UNESCO World Heritage Site
- The Liverpool City Region has a student population of 62,000 (the third largest student population in the UK)
- 7.2 million people live within a 1 hour commute
- Adjacent to Liverpool's Knowledge Quarter
- 4 Universities with 16,500 Graduates a year
- Liverpool is 2 hours from London via train
- Professional Sector has more than 2,500 businesses employing over 150,000 qualified professionals
- Liverpool John Lennon Airport has direct flights to more than 60 destinations worldwide with direct flights to Amsterdam, Berlin, Barcelona, Milan, Paris and Madrid
- 5th largest urban area in the UK
- Liverpool has the fastest rising productivity of any major city outside London – 7% higher than the UK average
- During the last decade Liverpool has been one of the fastest growing Cities in the UK with a 39% increase in economic output

HOME

FACADE

THE BUILDING

ACCOMMODATION

FLOOR PLANS, SCHEDULE & SPECIFICATION

GALLERY

CIRCUS

LOCATION

LIVERPOOL

CONNECTIVITY

CONTACT





CONNECTIVITY

Rail: Liverpool City Centre has excellent rail links with its own underground loop which provides direct access to Liverpool Lime Street providing mainline service connections to all major UK Towns and Cities. London Euston is 2 hours away with trains departing on an hourly basis. With a yearly footfall of, in excess of, 16M passengers, Liverpool Central Station, adjoins Circus and is the central hub for the Merseyrail network; encompassing both Wirral and Northern lines. It is the 7th busiest station outside of London.

Air: Liverpool John Lennon Airport is located approximately 7.5 miles South East of Liverpool City Centre and is one of Europe's fastest growing airports with flights to over 60 destinations.

Road: The Department enjoys excellent transport links with access to the M62, M57 & M53 motorways leading to the national motorway network.

HOME

FACADE

THE BUILDING

ACCOMMODATION

FLOOR PLANS, SCHEDULE & SPECIFICATION

GALLERY

CIRCUS

LOCATION

LIVERPOOL

CONNECTIVITY

CONTACT



Central Station Merseyrail



Liverpool John Lennon Airport



M62 Motorway

TERMS

The accommodation is available in whole floors or in suites from 8,000 sq ft by way of a new lease(s) for a term of years to be agreed.

RENTAL

Upon Application.

SERVICE CHARGE

Any ingoing occupier will be responsible for the payment of a service charge towards the upkeep and maintenance of the building.

VIEWINGS

For further information or to arrange a viewing please contact the letting agents.

HOME

FACADE

THE BUILDING

ACCOMMODATION

FLOOR PLANS, SCHEDULE & SPECIFICATION

GALLERY

CIRCUS

LOCATION

LIVERPOOL

CONNECTIVITY

CONTACT

www.thedepartment-liverpool.co.uk

AGENTS



Brian Ricketts
brianricketts@hwandp.co.uk



Ian Steele
ian.steele@gva.co.uk

Misdescriptions Act
GVA and Hitchcock Wright & Partners for themselves and for the vendors or lessors of this property whose agents they are, give notice that: (i) the particulars are set out as a general outline only for the guidance of intending purchasers or lessors and do not constitute, nor constitute part of, an offer or contract. (ii) all descriptions, dimensions, references to condition and necessary permission for use and occupation, and other details, are given in good faith and are believed to be correct but any intending purchasers or tenants should not rely on them as statements or representations of fact but satisfy themselves by inspection or otherwise as to the correctness of each of them. (iii) no person in the employment of GVA and Hitchcock Wright & Partners has any authority to make or give any representation or warranty whatever in relation to this property. (iv) all rentals and prices are quoted exclusive of VAT
Design: Alphabet Design www.alphabet-design.co.uk
05/18