



**AVISON
YOUNG**

Haymarket, Newcastle Upon Tyne, NE1 7PF

Office To Let | £14 per sq ft | 7,868 to 17,222 sq ft

Office To Let, Newcastle Upon Tyne



Description

The Hub is an iconic location in the city of Newcastle - providing stylish Grade A office space over four floors totalling 41,344 sq. ft (3,841 sq. m) with accommodation available from 6,017 sq. ft (559 sq. m). Offices feature large open plan floorplates, high ceilings and comfort cooling. The reception space is an impressive entrance to the building and gives access to an 8 person lift. The offices feature striking architectural design and are fully DDA compliant. On each floor male, female and accessible restrooms are available. The Hub has achieved a BREEAM rating of "Very Good". The Hub is an iconic location in the city of Newcastle - providing stylish Grade A office space over four floors totalling 41,344 sq. ft (3,841 sq. m) with accommodation available from 6,017 sq. ft (559 sq. m). Offices feature large open plan floorplates, high ceilings and comfort cooling.

Location

The Hub is at the centre of it all! The ultimate location in the heart of the city offering businesses excellent transport links, a visible position and a vast array of shopping and leisure amenities.

Situated above the Haymarket Metro Station, occupiers can move easily around the city and beyond. Haymarket reaches Newcastle Central Station and Newcastle Airport, as well Gateshead and South Shields. Newcastle is the regional capital of the North East of England. The City has excellent road links and is situated on the A1(M) which links London to Edinburgh in the north. This thriving city includes many national and international businesses, with many employees reliant on the city's extensive Metro service to get to work and to enjoy the city's array of attractions.

Key Points

- Large open plan floor plates
- Comfort cooling
- 24-hour office access and CCTV security
- Fully DDA compliant
- Impressive reception area
- Third floor and mezzanine levels available
- Striking architectural features
- High ceilings, vaulted in places
- Excellent connections to the city's districts and airport
- Nearby amenities include Pret a Manger and Shijo Japanese

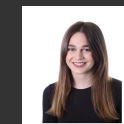
Summary

- Rent: £14 per sq ft
- EPC: C
- Lease: New Lease

Further information

- [View details on our website](#)

Contact & Viewings



Megan Cooper
0191 269 0066 | 07823 552 237
megan.cooper@avisonyoung.com



Adam Lawson
0191 269 0064 | 07825 113 277
adam.lawson@avisonyoung.com

Accommodation

Name	sq ft	sq m	Availability
1st	-	-	Coming Soon
2nd	-	-	Coming Soon
3rd	11,205	1,040.98	Available
Mezzanine - Level Three	6,017	559	Available
Total	17,222	1,599.98	