



# KING EDWARD HOUSE

NEW STREET - BIRMINGHAM - B2 4NS

78,550 SQ FT OF NEW CONTEMPORARY WORKSPACE  
IN THE BEATING HEART OF THE CITY





# COME ON IN

---

Constructed in 1936, King Edward House is an impressive Portland stone, seven-storey building located in the heart of Birmingham's retail and leisure district. The location provides occupiers with a vibrant neighbourhood amenity.

The building is undergoing a sustainable refurbishment delivering high quality, energy efficient, contemporary workspace. It's complemented by significant occupier wellness features including over 5,000 SQ FT of outdoor workspace, large gym, plus end of trip cycle and shower facilities. There is also a statement reception to ensure an exciting arrival experience.

King Edward House will be the place to be in 2024.



MAKE A BIG ENTRANCE

# MAKE A BIG ENTRANCE





# SUSTAINABILITY

In addition to a modern and stylish work environment, King Edward House will deliver the highest standards with its environmental and performance impact.

Once complete the building will provide the following:

EPC B (targeted)

BREEAM Excellent (targeted)

WiredScore Gold accredited

Smart energy services

Low carbon footprint

Solar PVs for renewable energy efficiency

Fully electric heating

Dedicated recycling & waste management area







# SPECIFICATION

---

Delivering a sense of pride to your new business address, King Edward House is being comprehensively refurbished to create a modern, fresh and bright environment that you will look forward to arriving at.

---

Exposed services

---

LG7 compliant LED lighting

---

Naturally light and efficient floor plates

---

Raised access floors

---

3 pipe VRF comfort cooling

---

1:10 sq m occupational density



# A FOCUS ON WELLNESS

---

There is a strong focus on wellness throughout the building and the new space has been configured to accommodate internal courtyards and terraces, with both private and communal roof terrace space and courtyards with the building's two light wells, creating truly unique breakout space.

---

40 cycle racks

---

8 showers with drying rooms and changing areas

---

2 roof terraces

---

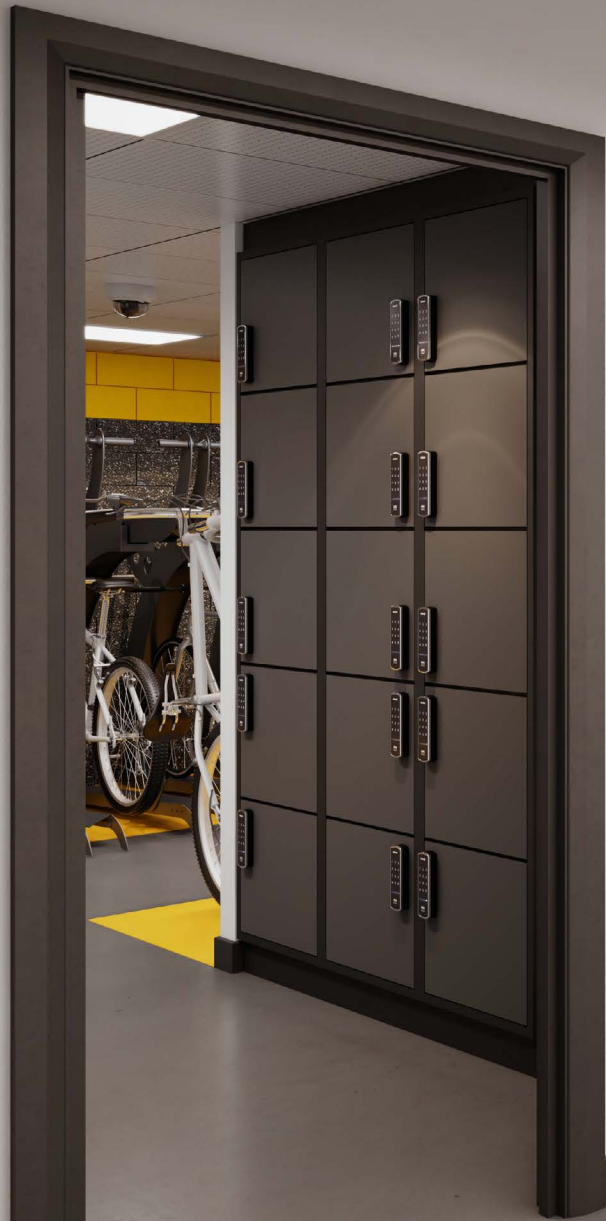
6 internal courtyards: 5 private & 1 communal

---

1,800 SQ FT gymnasium













# FLOOR PLATES

King Edward House comprises 7 floors with numerous unique internal courtyards and external terraces. All floors have been refurbished to a high quality specification, giving you the perfect balance between workspace and amenity.

**SEVENTH FLOOR**  
2,368 SQ FT; 4,198 SQ FT  
**TERRACE**  
1,582 SQ FT; 1,787 SQ FT

**SIXTH FLOOR**  
10,306 SQ FT

**FIFTH FLOOR**  
11,087 SQ FT

**FOURTH FLOOR**  
11,087 SQ FT  
**COURTYARD**  
496 SQ FT

**THIRD FLOOR**  
11,679 SQ FT  
**COURTYARD**  
807 SQ FT

**SECOND FLOOR**  
12,684 SQ FT  
**COURTYARD**  
764 SQ FT

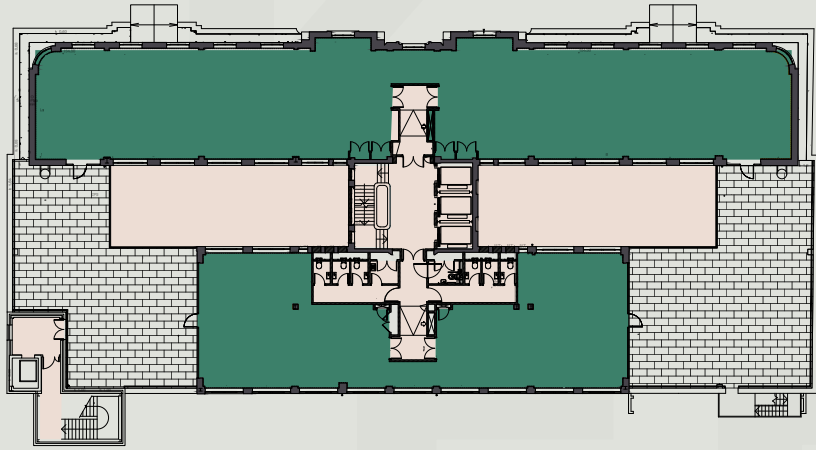
**FIRST FLOOR**  
9,741 SQ FT

**GROUND FLOOR**

**BUILDING TOTAL**  
78,550 SQ FT

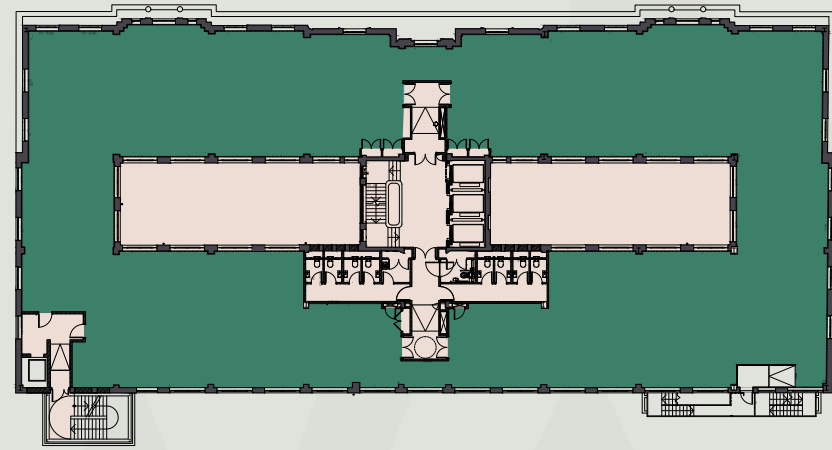






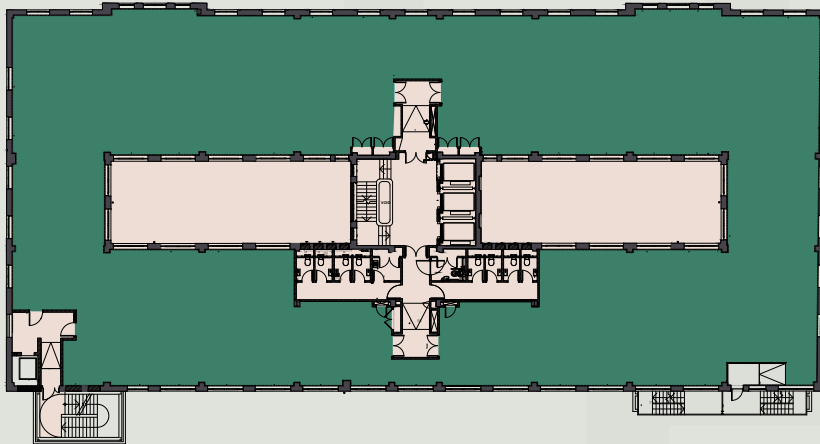
**SEVENTH FLOOR**

Office 2,368 SQ FT; 4,198 SQ FT  
Terrace 1,582 SQ FT; 1,787 SQ FT



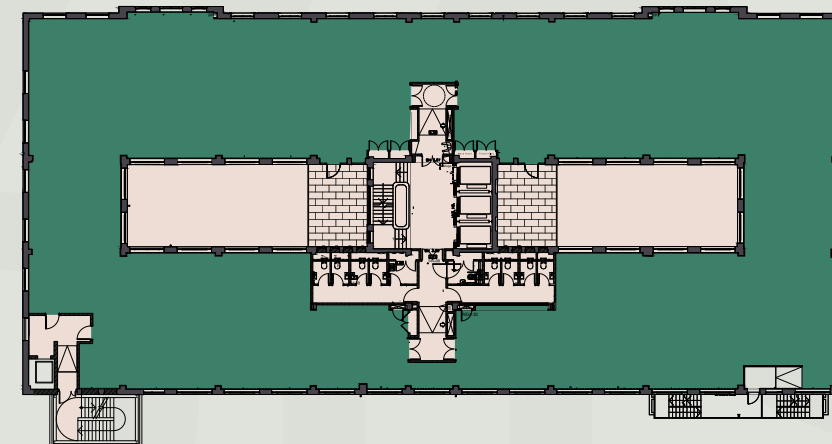
**SIXTH FLOOR**

Office 10,306 SQ FT



**FIFTH FLOOR**

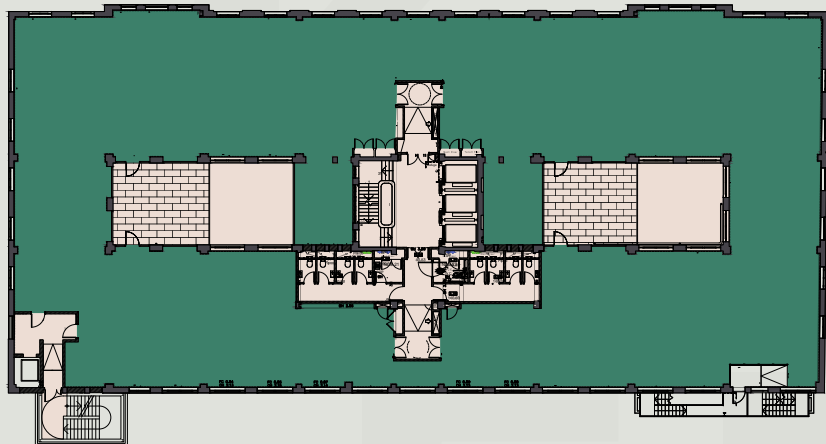
Office 11,087 SQ FT



**FOURTH FLOOR**

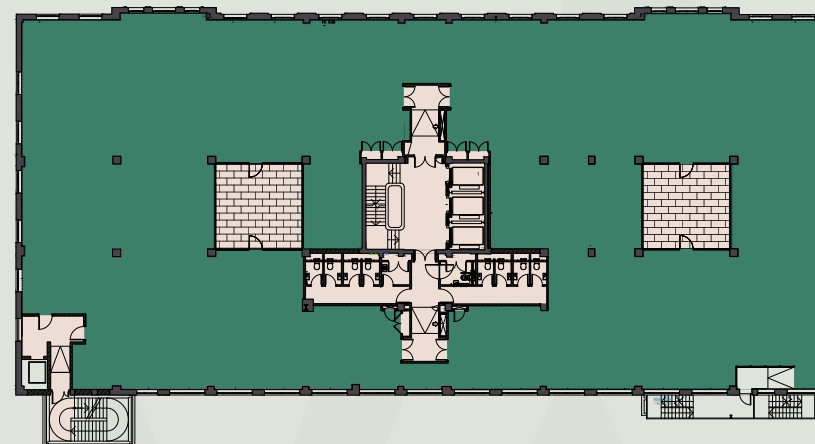
Office 11,087 SQ FT  
Terrace 496 SQ FT





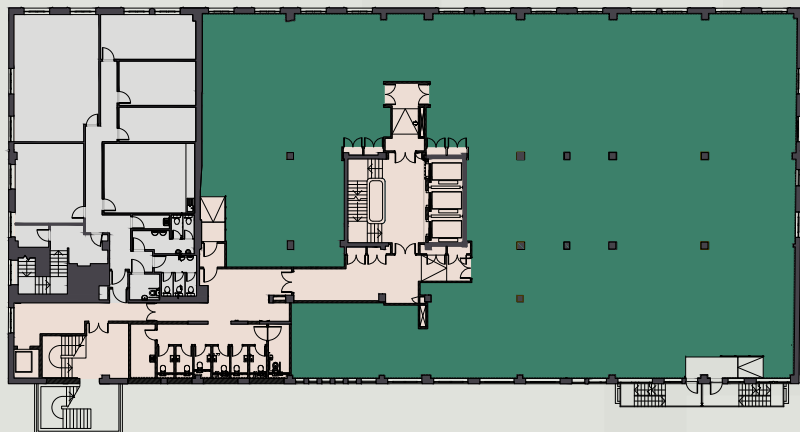
**THIRD FLOOR**

Office	11,679 SQ FT
Terrace	807 SQ FT



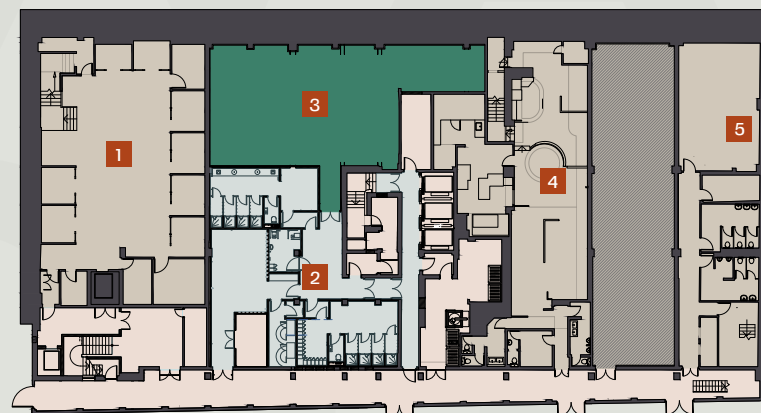
**SECOND FLOOR**

Office	12,684 SQ FT
Courtyard	764 SQ FT



**FIRST FLOOR**

Office	9,741 SQ FT
--------	-------------



**BASEMENT**

- |                            |                 |
|----------------------------|-----------------|
| 1. TSB                     | 3. Gym          |
| 2. Cycle storage & showers | 4. Pizza Hut    |
|                            | 5. Virgin Money |











# IN THE HEART OF IT





MAILBOX  
KING EDWARD HOUSE

KING EDWARD HOUSE

THE BULLRING

GRAND CENTRAL

NEW ST STATION

MOOR ST STATION

VICTORIA SQ

CORPORATION ST

CATHEDRAL SQ

COLMORE ROW

SNOW HILL STATION



# LOCATION

King Edward House is located at the centre of Birmingham's beating commercial heart, close to everything an occupier could need: amenities, public transport and the regional road network.

Birmingham benefits from unrivalled connectivity, ensuring ease of staff recruitment, retention and the ability to access clients and service providers.

The new HS2 terminal, when complete, will further enhance the city's connectivity. The terminal will be located less than a 5-minute walk from the building which in turn will connect the city into central London in 44 minutes.

For your staff to commute, the location of King Edward House couldn't be easier. New Street Station is located less than a 3-minute walk away whilst Snow Hill and Moor Street stations are located 8 and 5 minutes away respectively. By road, Birmingham lies at the heart of the UK's motorway network with direct access to the M5, M6, M40 and M42 motorways.

## BY METRO

Five Ways	10 mins
Jewellery Quarter	15 mins
West Bromwich	20 mins
Wolverhampton St George's	45 mins

## BY RAIL

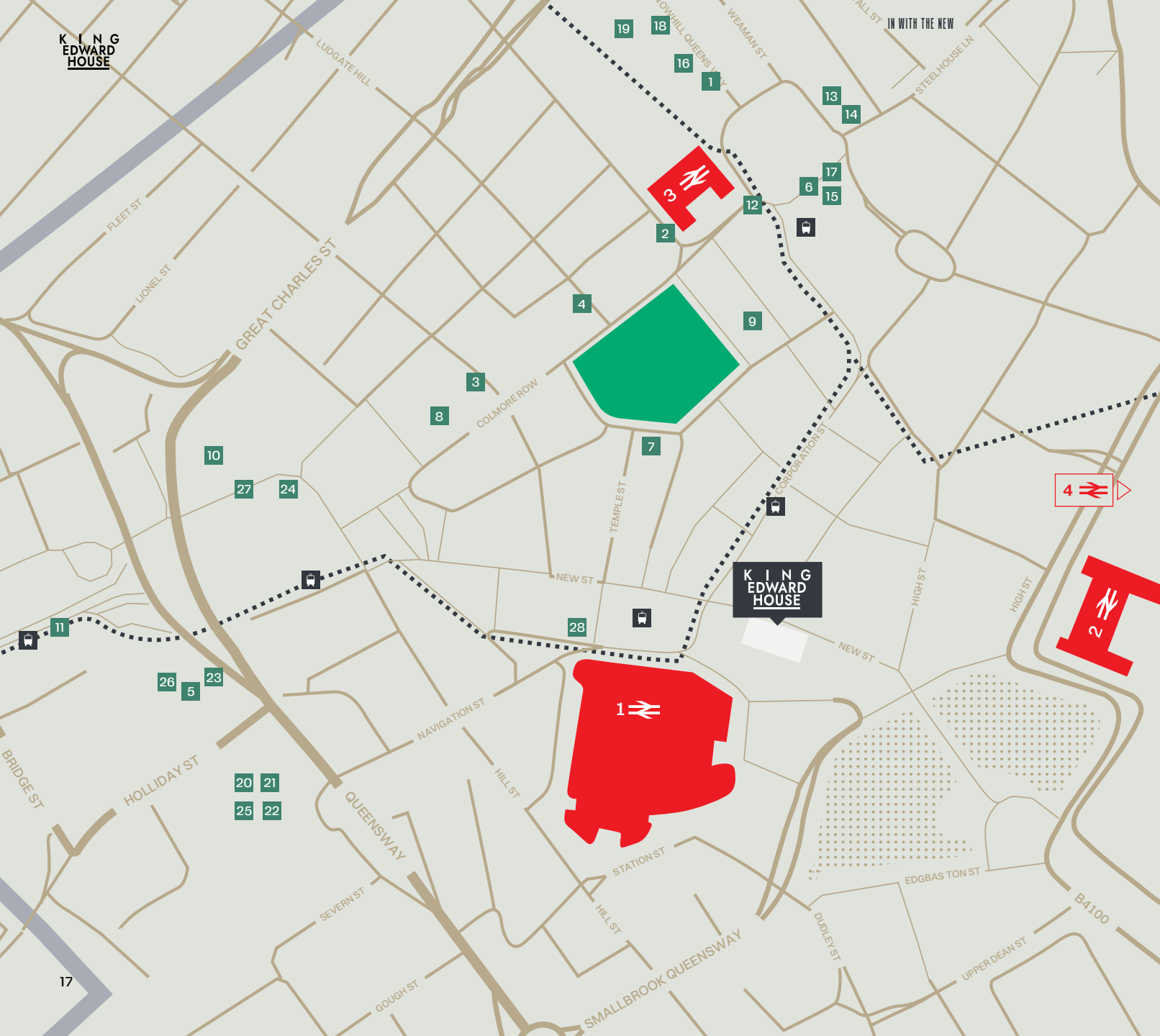
B'ham International	10 mins
Coventry	30 mins
Nottingham	35 mins
Bristol	1hr 20 mins
Manchester	1 hr 25 mins
London	1 hr 30 mins
Leeds	2hrs
Newcastle	3 hrs 25 mins
Edinburgh	4 hrs

## BY ROAD

M6	15 mins
Birmingham Airport	25 mins
Coventry	35 mins
Nottingham	1 hr
Bristol	1hr 45 mins
Manchester	1hr 50 mins
Leeds	2 hrs
London	2 hrs 30 mins







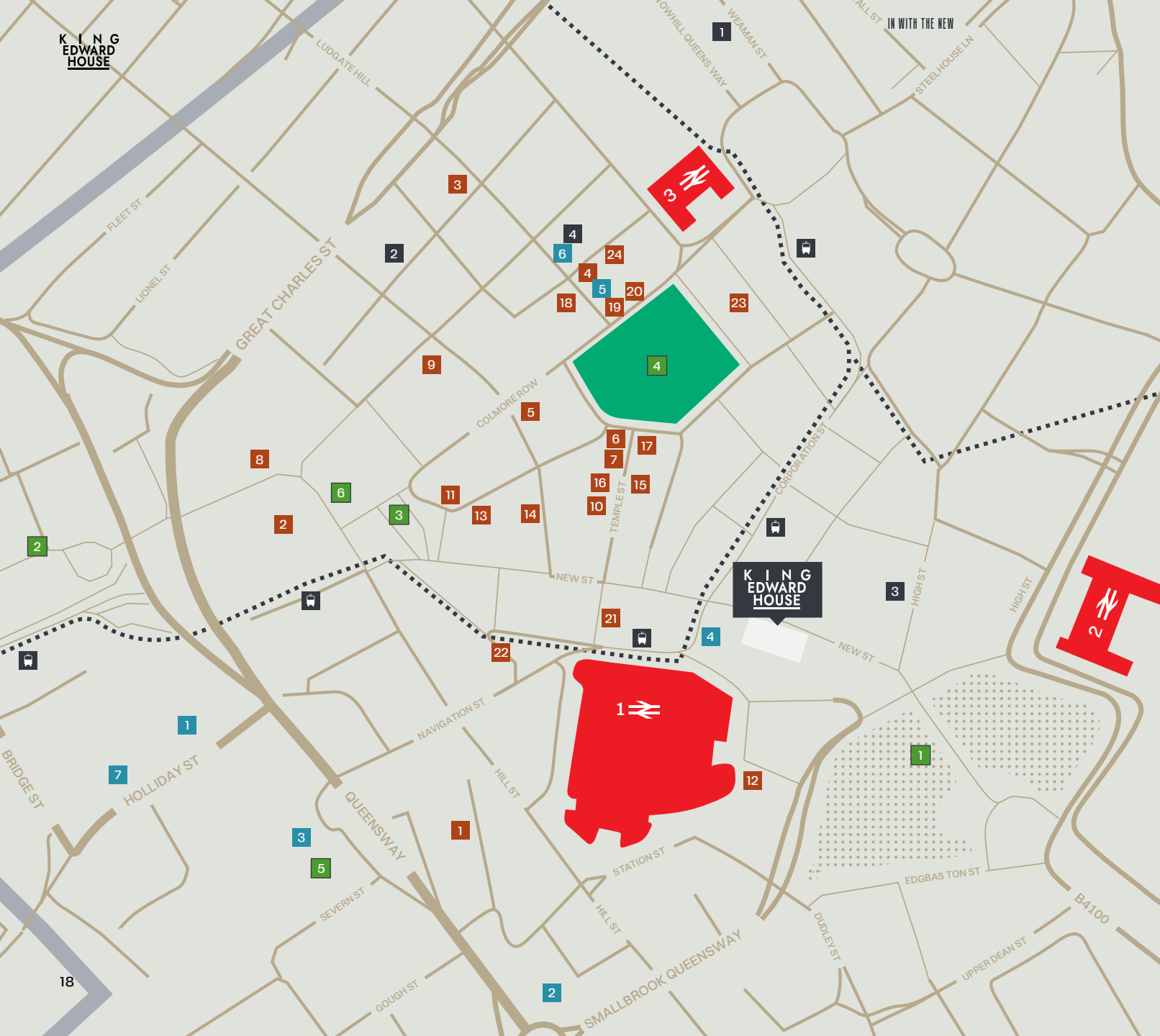
# YOU'RE IN GREAT COMPANY

- |        |        |        |        |
|--------|--------|--------|--------|
| 1<br>  | 2<br>  | 3<br>  | 4<br>  |
| 5<br>  | 6<br>  | 7<br>  | 8<br>  |
| 9<br>  | 10<br> | 11<br> | 12<br> |
| 13<br> | 14<br> | 15<br> | 16<br> |
| 17<br> | 18<br> | 19<br> | 20<br> |
| 21<br> | 22<br> | 23<br> | 24<br> |
| 25<br> | 26<br> | 27<br> | 28<br> |

## TRANSPORT

- |   |                   |             |             |
|---|-------------------|-------------|-------------|
| 1 | New St Station    | - 3 mins    | ..... Metro |
| 2 | Moor St Station   | - 5 mins    | Metro Stop  |
| 3 | Snow Hill Station | - 6 mins    |             |
| 4 | HS2 Curzon Street | - Open 2030 |             |





# BEST OF BOTH

## ■ BARS & RESTAURANTS

- |                   |                             |                              |
|-------------------|-----------------------------|------------------------------|
| 1. Brew Dog       | 10. The Botanist            | 17. The Ivy                  |
| 2. Albert Schloss | 11. Purecraft Bar & Kitchen | 18. Gaucho Grill             |
| 3. Purnell's      | 12. All Bar One             | 19. Gusto                    |
| 4. Isaac's        | 13. Adam's                  | 20. Alchemist                |
| 5. Vagabond       | 14. Rudy's Neopolitan Pizza | 21. 200 Degrees Coffee       |
| 6. Fumo           | 15. Las Iguanas             | 22. Yorks Café               |
| 7. San Carlo      | 16. Revolución de Cuba      | 23. Anderson & Hill          |
| 8. Dishoom        |                             | 24. Tattu Restaurant and Bar |
| 9. Asha's         |                             |                              |

## ■ HOTELS

1. Crown Plaza
2. Radisson Blu
3. Malmaison
4. Premier Inn
5. The Grand
6. Hotel du Vin
7. Holiday Inn Express

## ■ LANDMARKS

1. Bullring Shopping Centre
2. Library of Birmingham
3. Victoria Square
4. Cathedral Square
5. The Mailbox
6. Museum & Art Gallery

## ■ GYMS & LEISURE

1. MK Health Club
2. Blaze Studio
3. The Gym

## TRANSPORT

- |   |                     |             |   |              |
|---|---------------------|-------------|---|--------------|
| 1 | ➤ New St Station    | - 3 mins    | 🚶 | ..... Metro  |
| 2 | ➤ Moor St Station   | - 5 mins    | 🚶 | 🚏 Metro Stop |
| 3 | ➤ Snow Hill Station | - 6 mins    | 🚶 |              |
| 4 | ➤ HS2 Curzon Street | - Open 2030 |   |              |



# K I N G EDWARD HOUSE

NEW STREET - BIRMINGHAM - B2 4NS  
what3words - Shed.Debit.First

## READY TO STAND OUT FROM THE CROWD?

If you'd like to enquire about taking space at  
King Edward House please contact:

---

**AVISON  
YOUNG**

**CHARLES TOOGOOD**

charles.toogood@avisonyoung.com  
07831 855 139



**BNP PARIBAS  
REAL ESTATE**

**MARK ROBINSON**

mark.d.robinson@realestate.bnpparibas  
07342 069 808

AVISON YOUNG and BNP PARIBAS for themselves and for the vendors or lessors of this property whose agents they are give notice that: (i) the particulars are set out as a general guideline only for the guidance of intending purchasers or lessees and do not constitute, nor constitute part of an offer or contract. (ii) all descriptions, dimensions, references to condition and necessary permission for use and occupation, and other details are given in good faith and are believed to be correct but any intending purchasers or tenants should not rely on them as statements or representation of fact but satisfy themselves by inspection or otherwise as to the correctness of each of them. (iii) no person in the employment of AVISON YOUNG and BNP PARIBAS has any authority to make or give any representation or warranty whatsoever in relation to this property. (iv) all rentals and prices are quoted exclusive of VAT. April 2024

Crafted by CAB Property.