

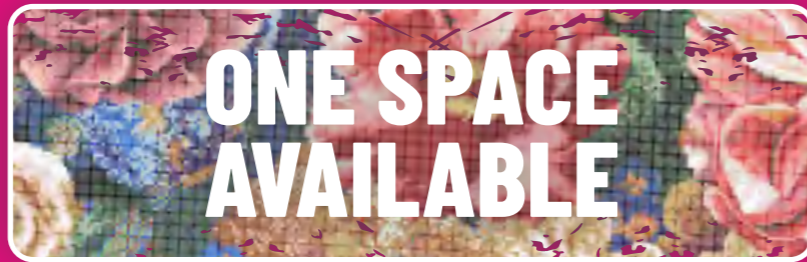
BRIDGE STREET STUDIOS





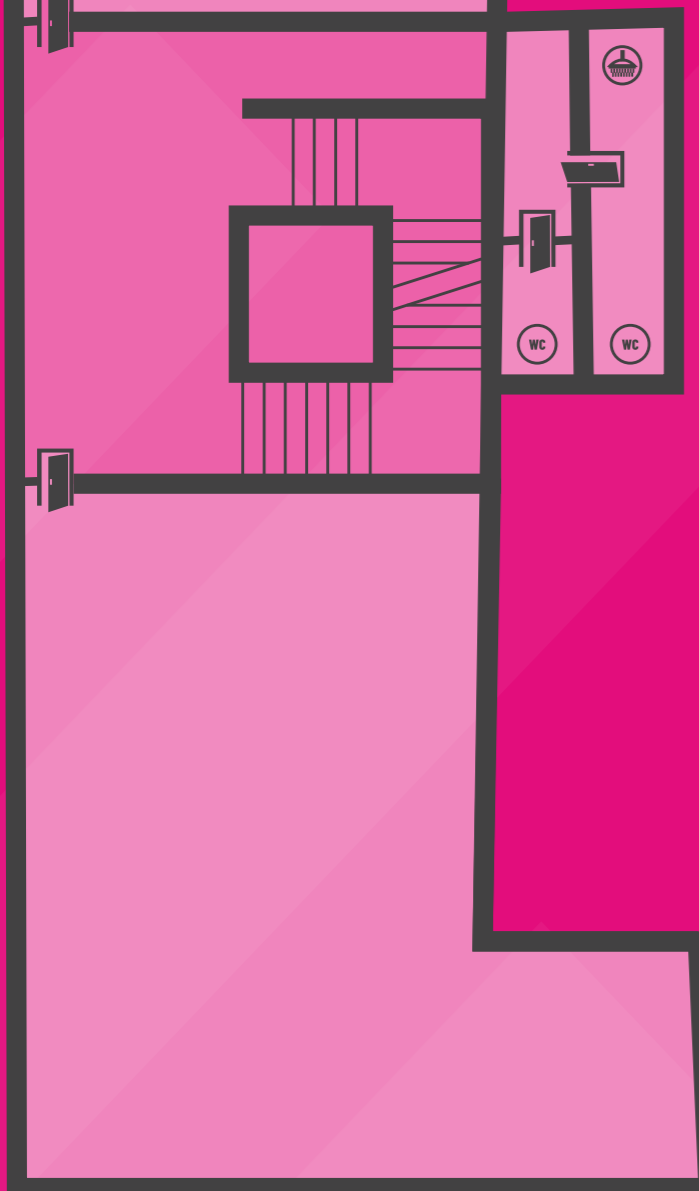
BRIDGE STREET

BOUTIQUE OFFICE SPACE IN THE HEART OF MANCHESTER.

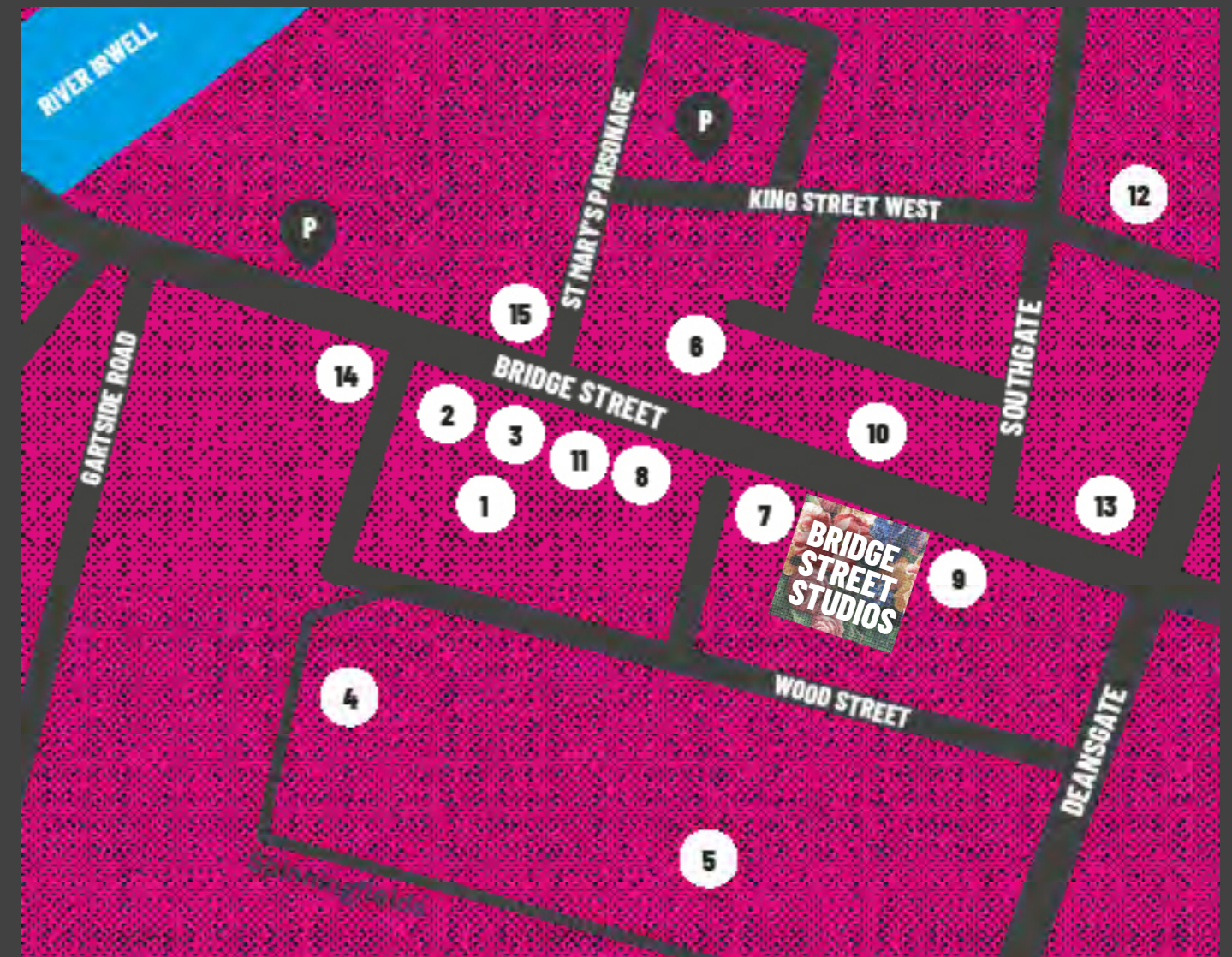


1,080 sq ft of space across a full floor or half a floor of 525 sq ft suitable for 4-18 person businesses.

- Private Offices
- Super fast wifi
- High tech access
- Flexible terms
- Showers
- Option for fully fitted out space
- Fully integrated private kitchen
- Communal meeting spaces
- 5 minute walk from Salford Central Train Station and 10 minutes from Deansgate Train Station
- 8 minute walk from St Peter's Square Metrolink



WE'VE GOT SOME FRIENDLY NEIGHBOURS.



- | | | |
|--------------------|---------------------|--------------------|
| 1 Manchester House | 6 Crazy Pedros | 11 Dishoom |
| 2 Neighbourhood | 7 The Bridge Pub | 12 House of Fraser |
| 3 Artisan | 8 The Masons | 13 Sainsbury's |
| 4 Oast House | 9 Randall and Aubin | 14 Waitrose |
| 5 Australasia | 10 Café Istanbul | 15 Costa |

We'd Love to talk to you about it.

0161 711 0851

hello@watchthisspace.property

BRIDGE STREET STUDIOS

62 Bridge St, Manchester, M3 3BW



hello@watchthisspace.property
www.watchthisspace.property
0161 711 0851