



THE LUMEN

A new standard for office space
in Newcastle upon Tyne

Newcastle
helix

Offices now available.
2,723 sq ft to 7,200 sq ft with
an unrivalled specification and
stunning panoramic views.

Discover opportunities. Generate new ideas. Exceed all
expectations. The Lumen provides cutting-edge office
space in the thriving community of Newcastle Helix.

Cutting-edge office space

THE LUMEN



THE LUMEN

Exciting ideas spark from great connections. That's why The Lumen champions a thriving, collaborative environment at all turns – from our space offering to the broader Newcastle Helix neighbourhood. We believe in a space where people meet, chat, share ideas and challenge each other.

Expect more at The Lumen

VIEW
LUMEN
VIDEO





Introducing Newcastle Helix.
The drive for better living informs every aspect here – from devising tech for new generations to unwinding with friends over a cup of coffee.

Bringing together start-ups, established businesses and game-changing pioneers, Newcastle Helix empowers businesses focussing on development, research and collaboration. It plays host to the National Innovation Centres for Data and Ageing, allowing us to champion the country's boldest thinkers in our bid to help everyone live easier, healthier, longer and smarter lives. This is a space built for today and driven by the future.



- 3 National Innovation Centres
- 24 acre hybrid city quarter in Newcastle centre
- £350m flagship project
- 450 homes for professionals and families
- 20,290 digital jobs, £1 billion GVA, 22% high-growth firms
- no.1 fastest-growing tech region in the UK (Excluding London)



The Core



The Biosphere



The Catalyst



The Urban Sciences Building



Frederick Douglass Centre





The Urban
Sciences Building

The Core

Hadrian's
Tower

The Spark

The Biosphere

The Catalyst

THE
LUMEN

Boutique
Hotel

The Frederick
Douglass Centre

The Garage

View Student Accommodation

Sandman Signature Hotel

Newcastle University Business School

Wellington Plaza South Block

Unite Students Wellington Plaza

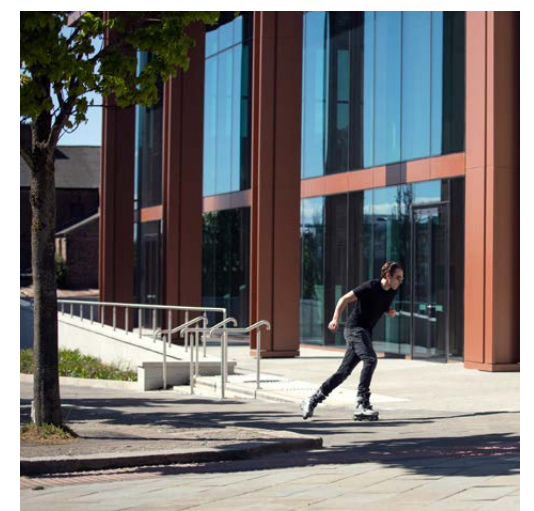
Verde Student Accommodation

THE
LUMEN

Illuminating a new way of working



We're not meeting expectations.
We're exceeding them. To open up
how space is used. How businesses
innovate. How people collaborate.
The Lumen is 106,000 sq ft of brand-
new Grade A offices, right in the heart
of the city. Offering sophistication,
with accessibility. Cutting-edge
amenities, with ease of use. A space
for an occupier to make their own.
Side by side with a wide range
of innovative new businesses.
All with unparalleled support.

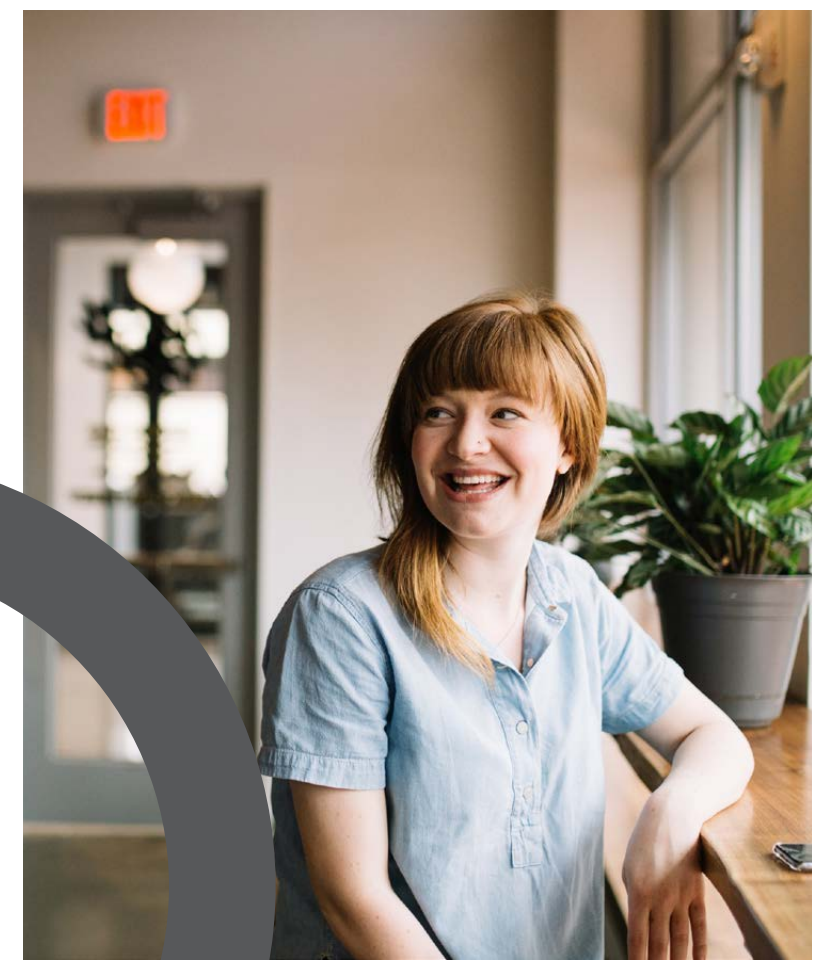




Grab a drink after work. Take clients for lunch. Catch up with co-workers over coffee.

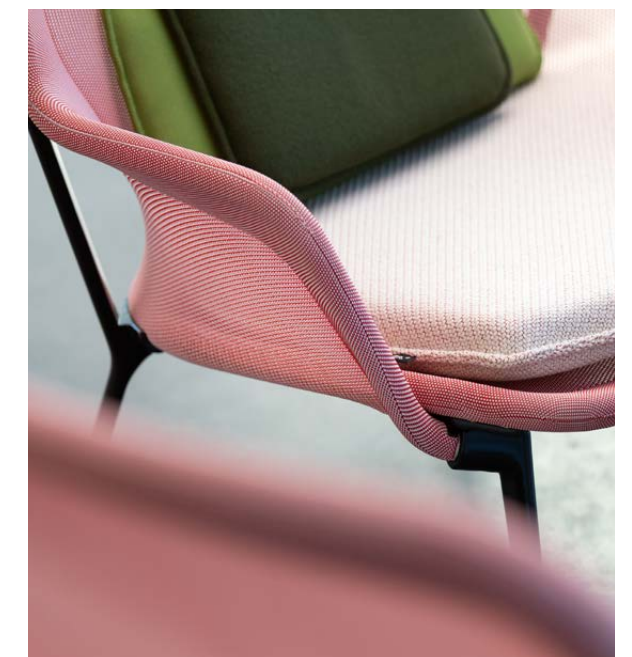
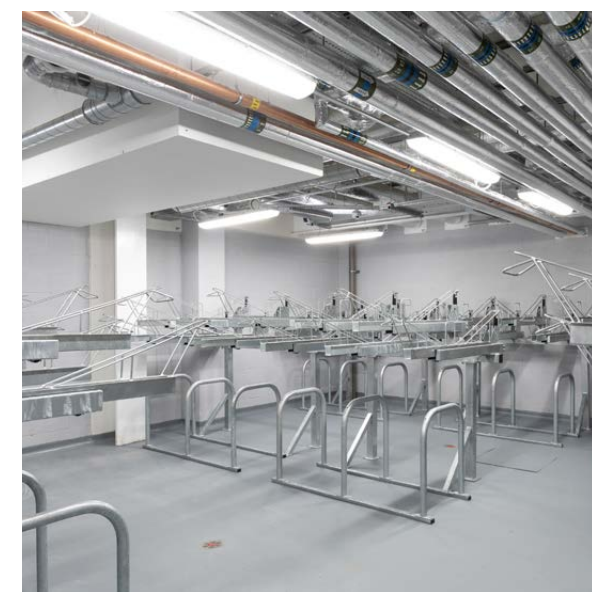
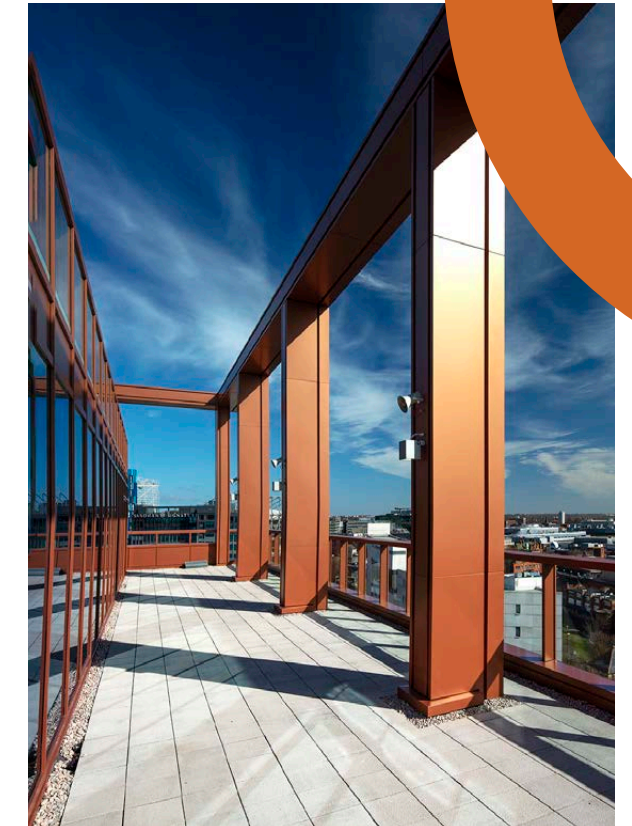
The Lumen offers a host of nearby bars, cafés and restaurants, both within the Newcastle Helix development and throughout the city. Newcastle's diverse restaurants, great shops and the open green spaces of Leazes Park and Exhibition Park ensure co-workers can connect and unwind in the area. Better working is at the heart of our offering.

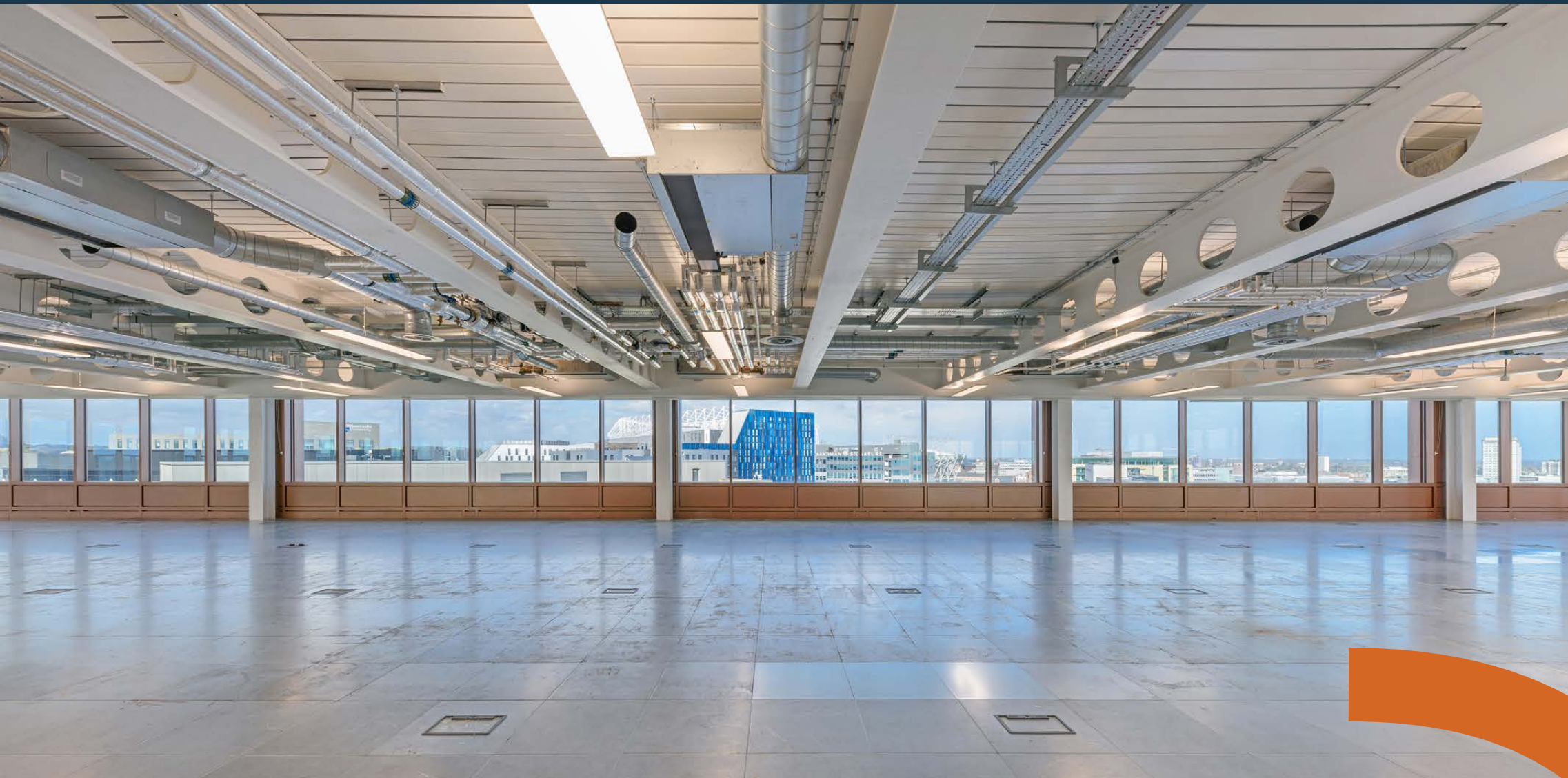
THE
LUMEN



Specification

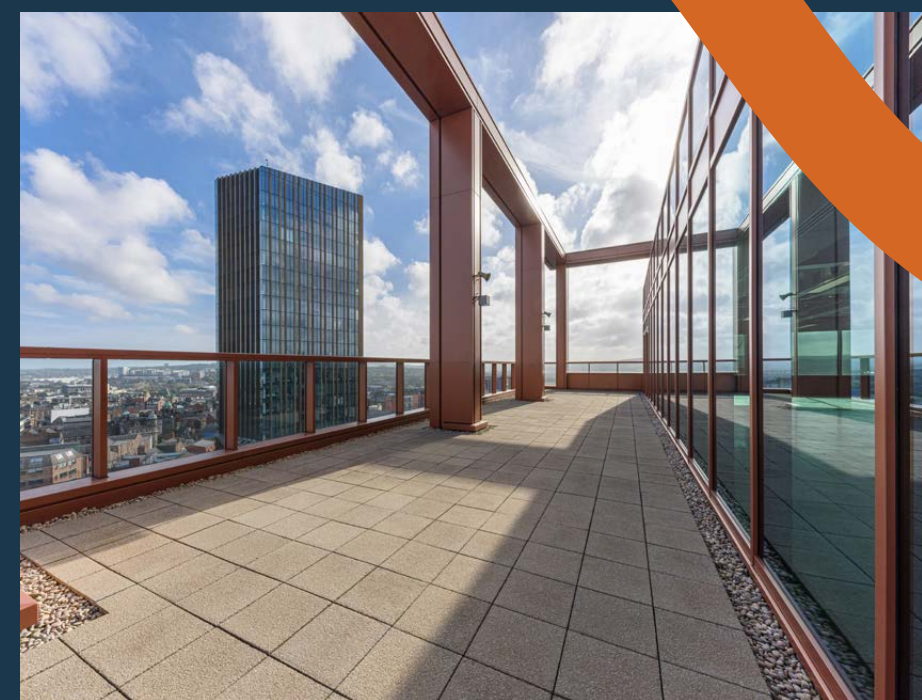
- Large communal reception area of 2,400 sq ft
- Excellent natural light on large open floorplates
- Central core providing flexible floorplate
- Depth of 15m window to core
- Designed to an occupational density of 1:8 sq m
- Raised floors with 150mm void
- Finished floor-to-ceiling height of 2.8m
- 4 pipe fan coil air conditioning
- LED lighting providing 350 lux at desk level
- Exposed services
- Floor loading 3.0+1 kN/m²
- Shower facilities – 1 per 68 persons
- Secure cycle storage – 100 spaces
- On-site multi-storey car parking at 1:1,000 sq ft providing 107 spaces for the building
- BREEAM Excellent
- EPC Rating: A25
- WiredScore rating: Gold

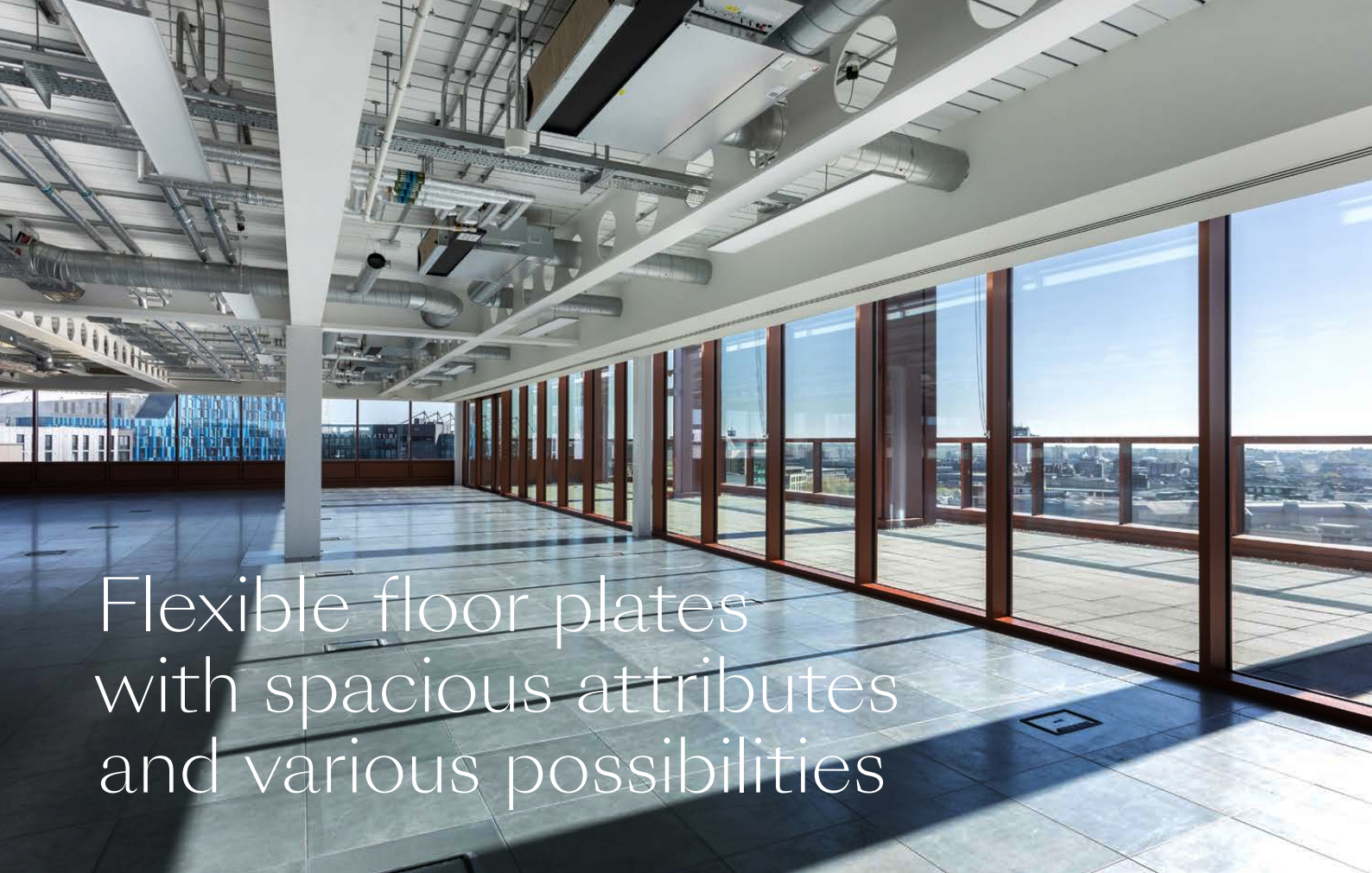




Facilities within The Lumen are designed to champion Newcastle Helix's belief in better living.

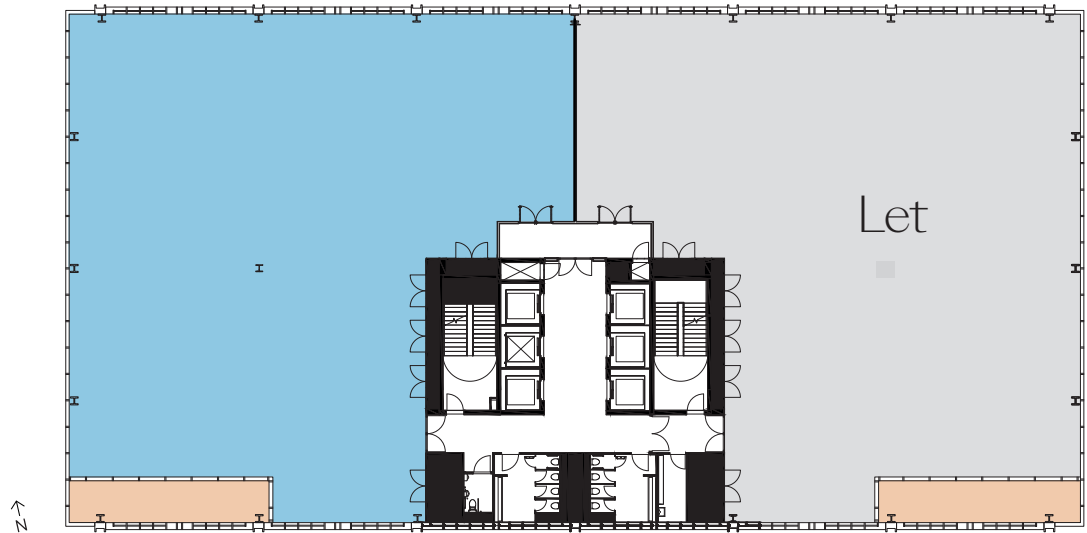
Floor-to-ceiling windows flood the space with natural daylight, providing a healthy environment throughout, while air conditioning maintains a constant indoor temperature. Fitted with showers, changing facilities and racks for 100 bikes, The Lumen ensures a comfortable working experience.



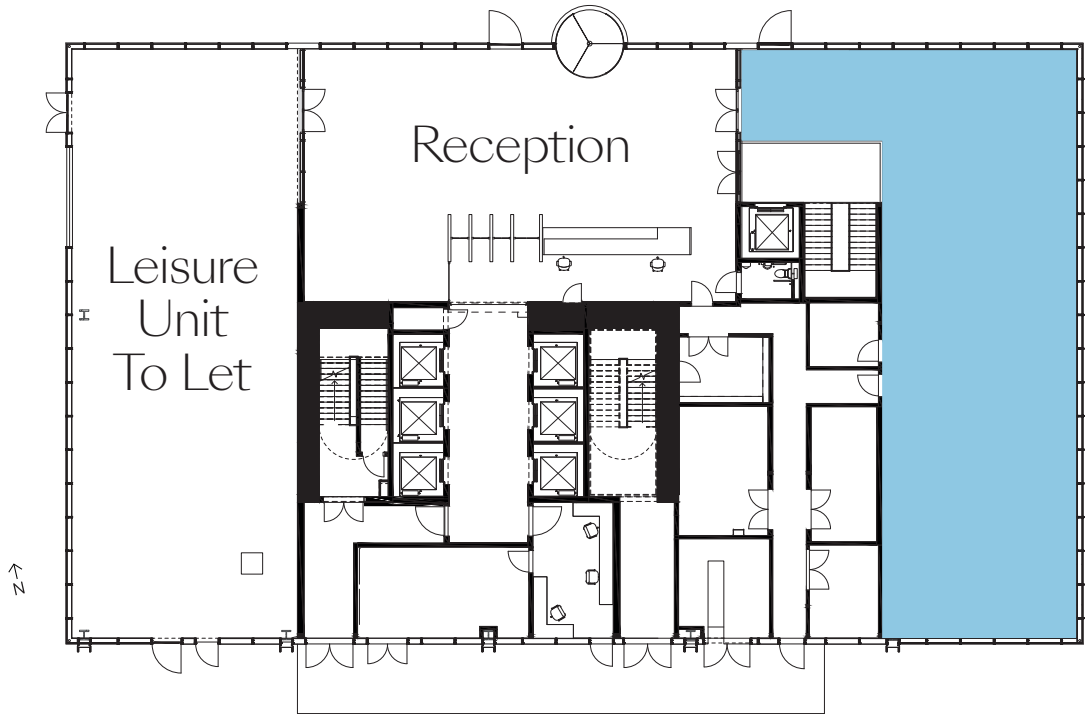


Flexible floor plates
with spacious attributes
and various possibilities

Floor	SQ M	SQ FT
Seventh		DVSA
Sixth		Scott Logic
Fifth		Hay & Kilner
Fourth (Part)		NatWest
Fourth (Part)	668.9	7,200
Third		Clifford Chance
Second		Homes England
First	Savills / Homes England / North of Tyne Combined Authority	
Upper Ground	253	2,723
Ground Floor		DVSA
Total	921.90	9,923
Ground (Café)		Available



Fourth Floor



Upper Ground Floor



St James' Park



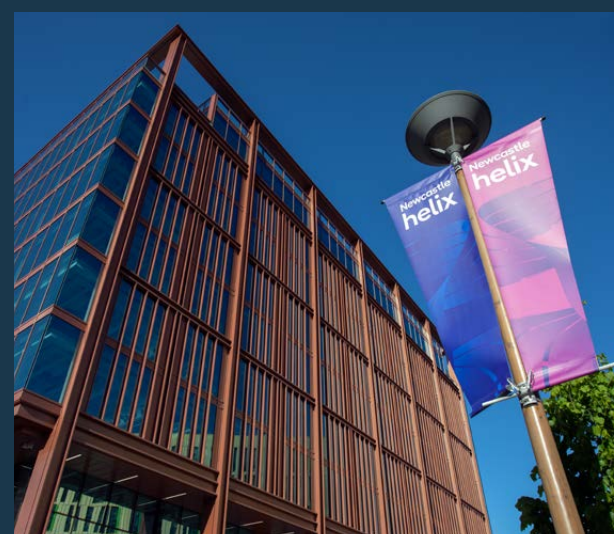
Newcastle Central Station



Newcastle and the North East

Once the city that spearheaded the Industrial Revolution, Newcastle continues its legacy as a beacon of progress in a tech-driven world.

Today, the North East is the densest region in England for employment in the life sciences and healthcare sector, proudly hosting numerous research facilities – from the UK's National Innovation Centre for Ageing to the National & Innovation Centre for Data. Newcastle Helix is the latest chapter in Newcastle's inspiring story of innovation.



The Lumen



Quayside

Local destinations

SAT NAV NE4 5BZ



Transport

- 1 Newcastle Central Station
- 2 Haymarket Metro & Bus Interchange
- 3 Monument Metro Station
- 4 St James Metro Station

Education

- 5 International Centre for Life
- 6 Northumbria University
- 7 North East Futures UTC
- 8 Newcastle College
- 9 Discovery Museum
- 10 City Library
- 11 Dance City

Leisure & retail

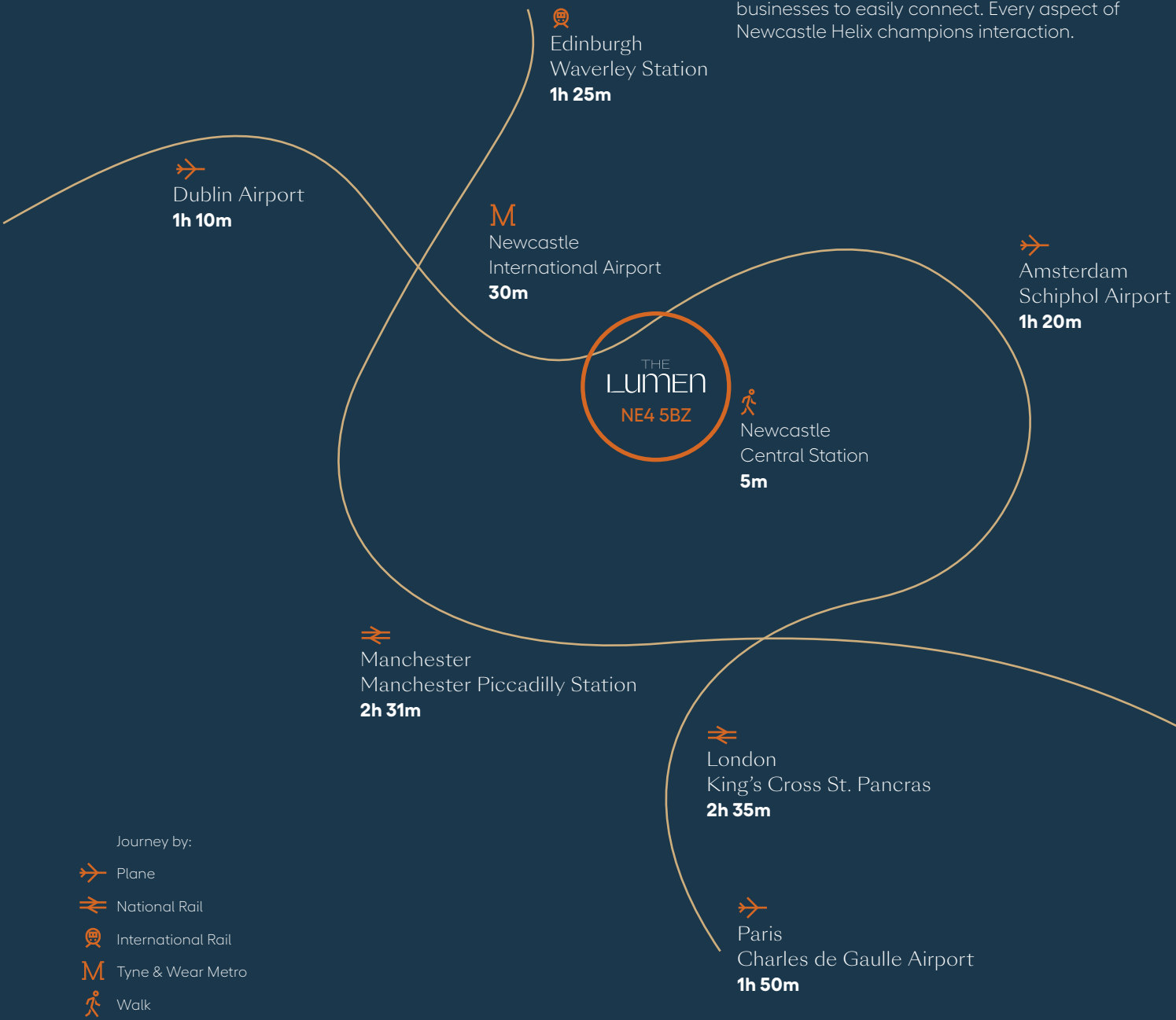
- 12 Crowne Plaza
- 13 Lane 7
- 14 Metro Radio Arena
- 15 Theatre Royal
- 16 Northern Stage
- 17 Leazes Park
- 18 Exhibition Park
- 19 The Sage Gateshead
- 20 Baltic Centre for Contemporary Art
- 21 Laing Art Gallery
- 22 Grey Street
- 23 Eldon Square

Restaurants

- 24 The Botanist
- 25 All Bar One
- 26 Decantus
- 27 Pink Lane Coffee
- 28 Blake's
- 29 China Town
- 30 The Earl of Pitt Street
- 31 Caf   21
- 32 House of Tides
- 33 Marco Pierre White Steakhouse

Global connections

Reach the city, country and world from The Lumen. Newcastle Helix's central location places the city's amenities within easy walking distance. London can be reached in 2h 35m and Edinburgh in 1h 25m, while Newcastle International Airport allows global businesses to easily connect. Every aspect of Newcastle Helix champions interaction.



Times: Expedia, National Rail and Google Maps

Contact us

AVISON
YOUNG

Tony Wordsworth

M: +44(0) 7785 916 936

tony.wordsworth@avisonyoung.com

Adam Lawson

M: +44(0) 7825 113 277

adam.lawson@avisonyoung.com



Greg Davison

M: +44(0) 7977 587 303

greg.davison@savills.com

Emma Young

M: +44(0) 7977 097 760

emma.young@savills.com

thelumennewcastle.co.uk

The Lumen, Newcastle Helix, St James' Boulevard
Newcastle upon Tyne NE4 5BZ

Misrepresentation Act: IMPORTANT.
These particulars do not form part
of any contract. Newcastle City
Council, Legal & General, Savills
and Avison Young nor any of their
directors, employees or agents
are authorised to give or make any
warranty or representation on behalf
of any party. Whilst information
and particulars are given in good
faith, intending purchasers or
tenants must satisfy themselves
independently as to the accuracy
of all matters on which they intend
to rely. All negotiations are subject
to contract. BS3388, November 2023

Photography by
Mark Slater
Graeme Peacock

Produced by
www.creativestreakdesign.co.uk 07706 795669
Ref: CSD/2383

Newcastle
helix