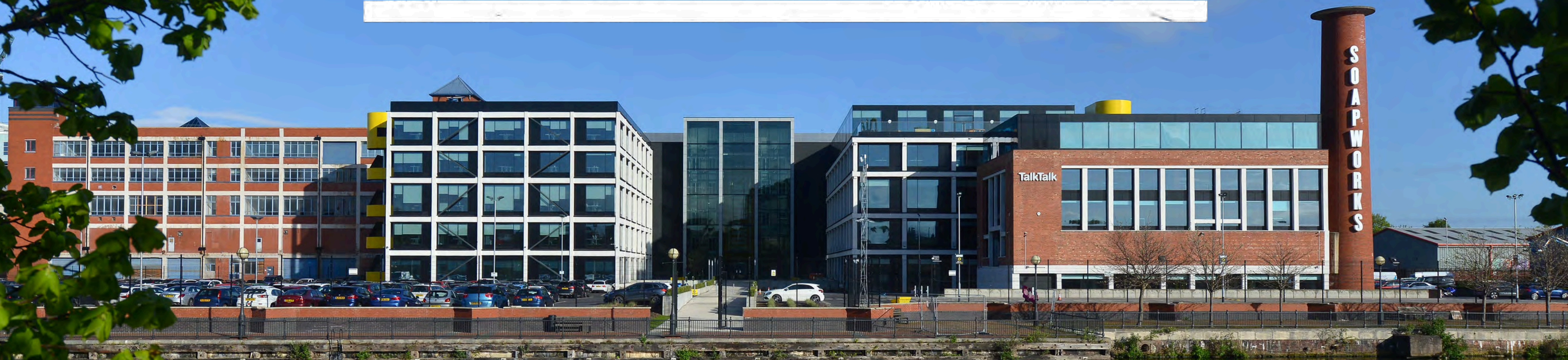
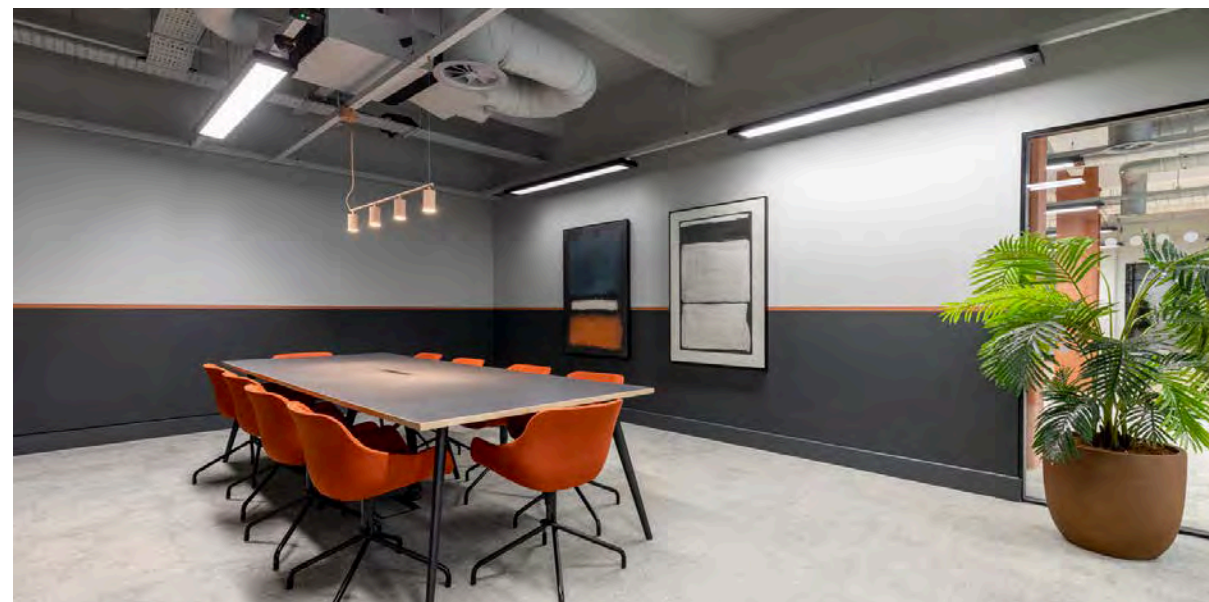


SOAPWORKS



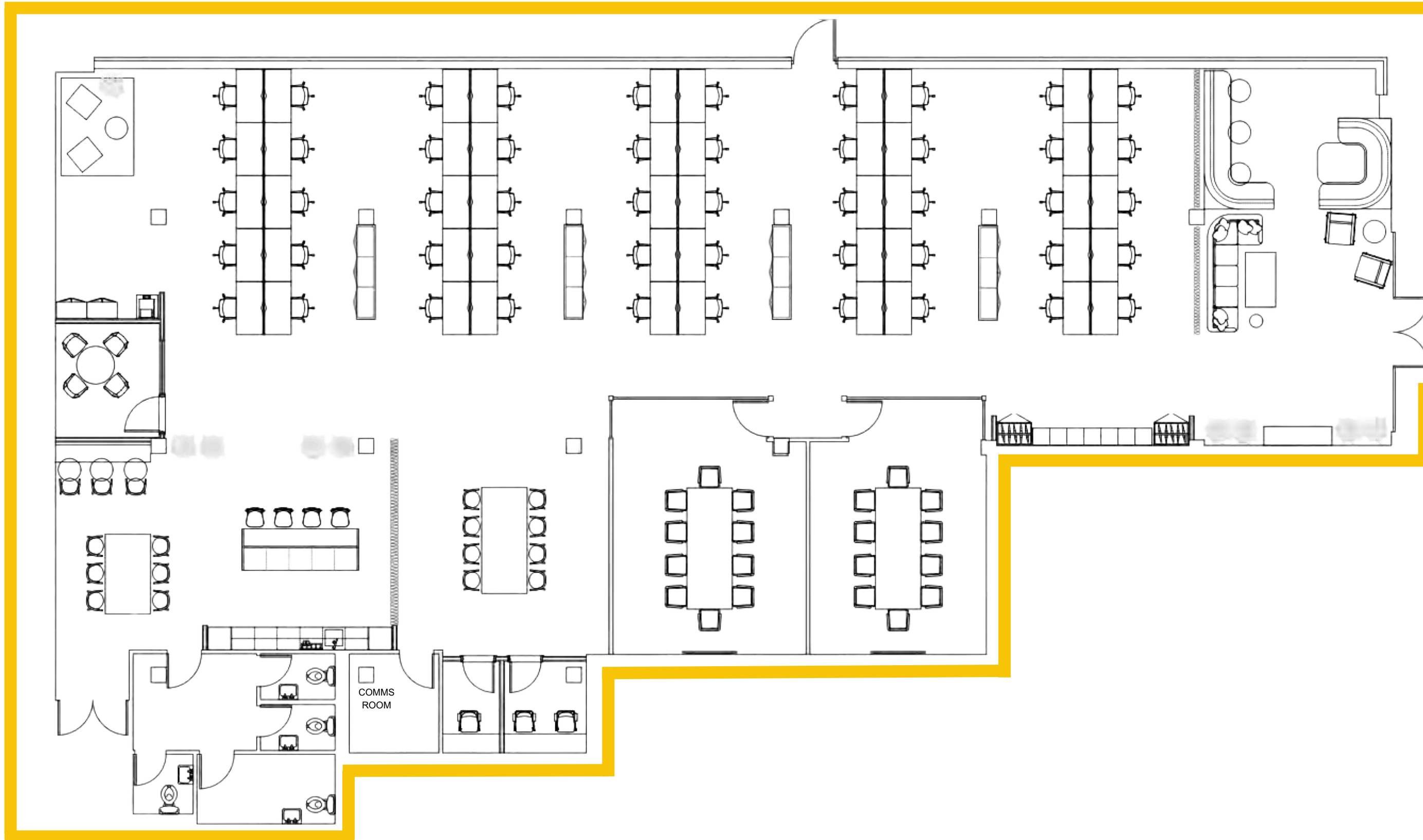
A BUILDING LIKE NO OTHER.

FULLY-FITTED & FURNISHED OFFICE SUITE



SUITE B1- GF

5593 sq ft.

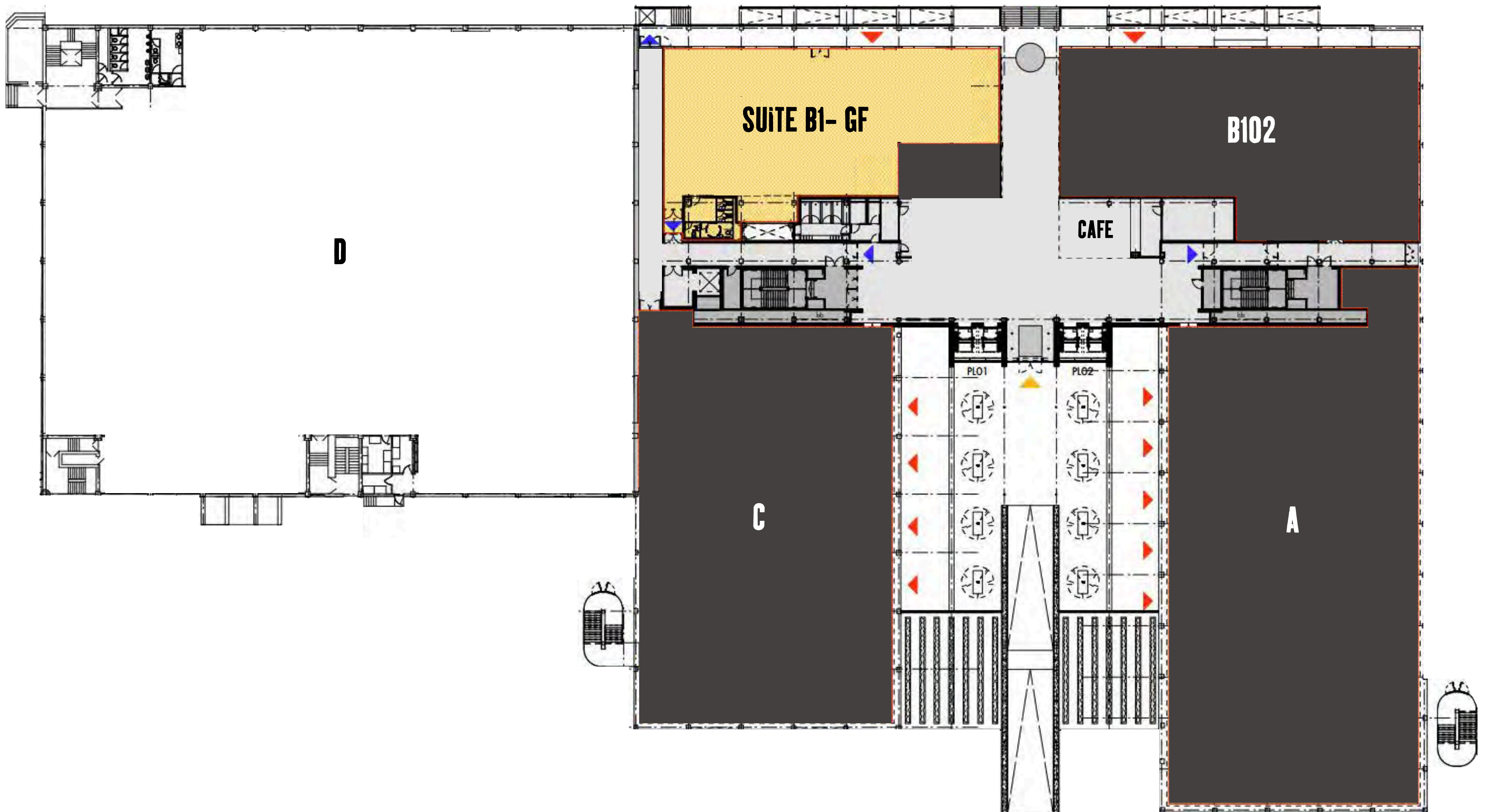


Specification

- >> New LED lighting
- >> Demised VRF System
- >> Raised Access Floor
- >> 1:10
- >> Demised Toilets

Fitted Layout

- >> 50 Desks installed
- >> 2 x 10-Person Meeting Rooms
- >> 1 x 4 Person Meeting Room
- >> 2 x Quiet Rooms / Zoom Pods
- >> 4 x Demised Toilets
- >> Spacious Kitchen with Breakout Area
- >> Reception/Welcome Space
- >> Secure Lockers



CURATED, COMMUNITY-FOCUSED SPACE.

Be part of the Soapworks Scheme to gain access to a range of community activities, events and fundraisers.

With an on-site estates team keeping Soapworks at the forefront of Space as a Service, no two weeks are the same.



UNMISSABLE EXPERIENCES.



ENRICHING TEAMS.



SEASONAL EVENTS.

COMMUNITY SCHEMES.



DOING GOOD.

AMENITIES GALORE.

**FOODWORKS CAFE
WITH
ON-SITE CHEF**



**FREE Bi-ANNUAL
BIKE M.O.T.S**



**DEDICATED TO
WELLBEING**



**POP-UPS AND
GIVEAWAYS**



**COMMUNAL
OUTDOOR
SPACES**

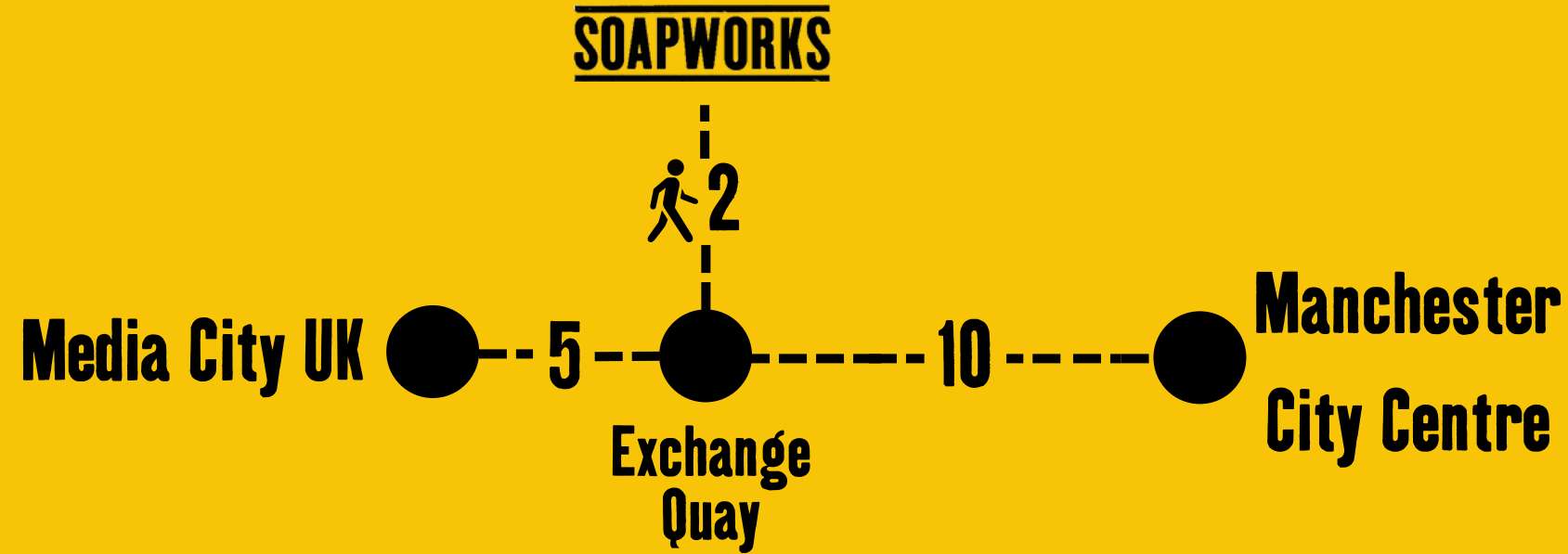


**MONTHLY CAR
VALET SERVICE**



CONNECTED.

Promoting climate-friendly travel with exceptional transport links, secure bike storage, electric bikes/scooters for hire at the front gate and quality shower facilities.



CITY CENTRE 10
TRAIN STATION 10

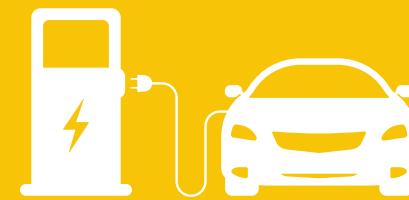


CITY CENTRE 10
TRAIN STATION 15



CITY CENTRE 5
AIRPORT 15
M60/M62 5

**On-site hireable
EV Chargers**

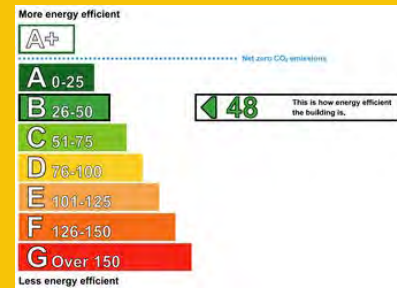


SOAPWORKS



BICYCLE PARK

MORE THAN A BUILDING.



ENVIRONMENTAL

EPC B ●

BREEAM EXCELLENT ●

PRO-ACTIVE ENERGY MONITORING SCHEME ●

SOLAR ENERGY EQ. TO 87 HOUSES ●

COMMUNITY

LOCAL FOOTBALL TEAM SPONSORSHIP ●

PROMOTING LOCAL BUSINESSES ●

SEASONAL DONATION DRIVES ●

DONATE 1000+ ITEMS OF AID EVERY YEAR ●



SOAPWORKS

