

urbansplash

Match Factory

Matchworks

Liverpool



Industrial space to let
756 sq ft - 10,568 sq ft

Match Factory is situated in the hugely successful Matchworks estate in Garston, Liverpool. Industrial units are available to let,

with offices, roller shutter access, eaves height of five metres and dedicated car parking on flexible terms.

roybackhouse&co
Commercial Property Consultants

0151 207 7728
www.roybackhouse.co.uk

roy@roybackhouse.co.uk

gva.co.uk
Mercury Court
Tilkeham Street
Liverpool L2 2QP
GVA
0151 255 1910

jonathan.lower@gva.co.uk

0333 666 0000
commercial@urbansplash.co.uk
www.urbansplash.co.uk



Match Factory

Banks Road
Garston
Liverpool
L19 2RF

All of our industrial units are delivered to a high specification with eaves high of 5m, gas supply and dedicated on-site parking. The majority of units have ancillary offices, roller shutter access and three phase power.

Units are available to let from 756 sq ft (70 sq m) to 6,049 sq ft (562 sq m).

Location

Located just off Speke Road, Garston, Match Factory has excellent transport links to Liverpool city centre which is just 15 minutes away. Match Factory has easy access to the motorway network with the M57, M62 and M56 all close by. Liverpool John Lennon Airport is less than two minutes drive away. Liverpool South Parkway interchange is located 10 to 15 minutes' walk away which provides links to the national rail network. Mersey Retail Park is located over the road, which is one of the country's best performing out of town retail parks.

» [Click here to see location map](#)



Specification

Finishes, fixtures and fittings

- Units are of modern construction with steel portal frame, part breeze block and brickwork external cladding and pitched roof incorporating translucent panels
- Each unit has an eaves height of 5m, gas supply, three phase electricity and fluorescent strip lighting
- Car parking is available to the front of each unit

Services

- Some units are self contained with roller shutter access and their own WCs and kitchen area
- Gas supply

Common areas

- Some units have access to shared WCs and kitchen

Floor areas

Unit number	Area (Sq ft)	Area (Sq m)
Ground floor		
1	2,969	276
2*	4,538	422
3*	6,042	561
4	2,987	277
5	6,049	562
6	4,519	420
7	4,523	420
8	2,815	262
9	737	68
10	755	70
11	756	70
12	1,145	106
12a	753	70
The Annexe	2,245	209

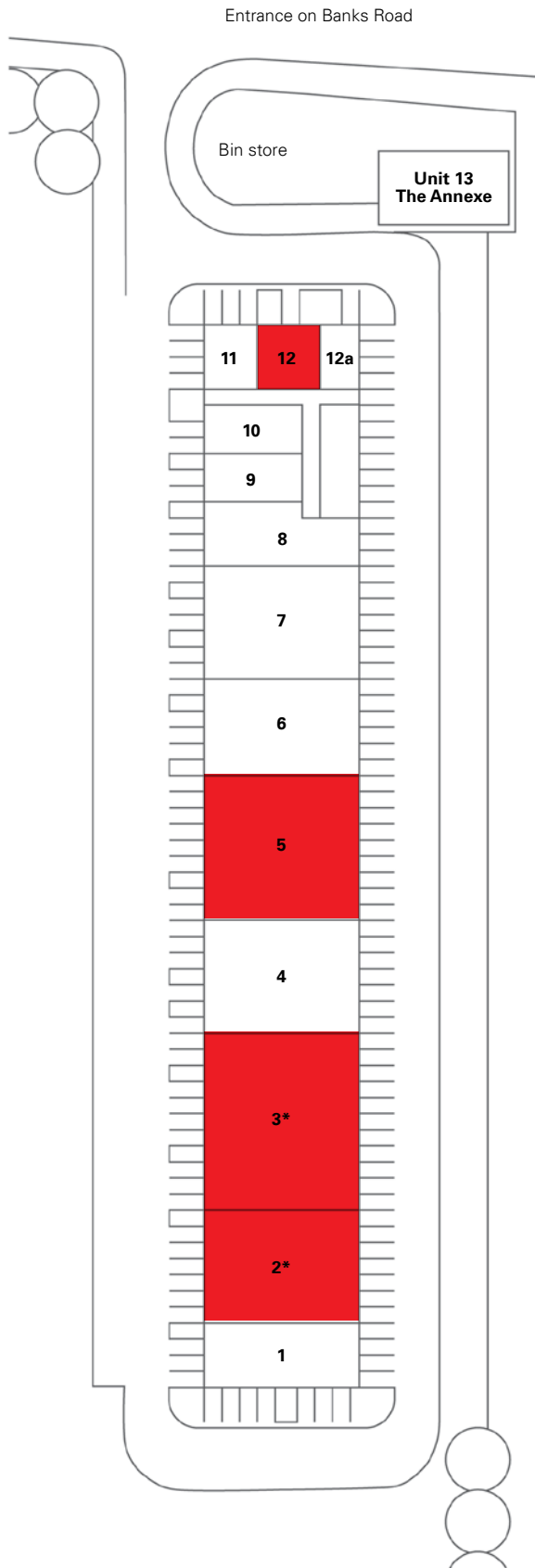
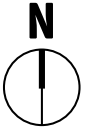
* can be combined

Available

Existing tenants include:

Nicholas Van Hire, J D Plastics, Merseyside Technologies Ltd, Michael Mcree, V & B Cards Ltd, Speke Garston Mini Bus Agency Ltd, Global Power Ltd, Veritas Safety UK Ltd, Add Signs

Floor plans



* can be combined

 Available

DISCLAIMER: Urban Splash and Agents acting on their behalf give notice that:
1. These particulars are produced in good faith, are set out as a general guide only and do not constitute part of a contract, 2. No person in the employment of Urban Splash or their Agents has any authority to make or give any representation or warranty in relation to this property, 3. Unless otherwise stated all prices and rents are quoted exclusive of VAT, 4. Date of publication July 2014