



Yew Tree House

Dodsley Grove, Easebourne, Midhurst, GU29 9AB



Yew Tree House

Dodsley Grove, Easebourne, Midhurst, GU29 9AB

Nestled within the sought-after village of Easebourne, this superb five-bedroom detached house boasts an expansive 3500 sq ft of living space, offering an unparalleled blend of luxury and comfort. Elegantly designed and meticulously crafted, this residence features spacious rooms flooded with natural light, complemented by high-end finishes throughout. With its serene surroundings and generous layout, this property presents an exceptional opportunity for those seeking a refined lifestyle in an idyllic setting.

 5  3  4  B

- ▶ Five Bedrooms / Four Bathrooms
- ▶ Detached Family Home
- ▶ Sought After Location
- ▶ Double Garage
- ▶ Kitchen / Dining / Family Room
- ▶ Four Reception Rooms
- ▶ Mature Gardens
- ▶ 3500 sqft Accommodation
- ▶ Gas Fired Underfloor Heating
- ▶ Bright And Airy Throughout

To arrange a viewing call 01730 817370
View details online at henryadams.co.uk

Yew Tree House

Welcome to Yew Tree House, a captivating family home nestled in the serene village of Easebourne, Midhurst. Built in 2012, this stunning residence spans over 3,500 square feet, offering a harmonious blend of luxury, comfort, and functionality.

As you approach, the property exudes immense appeal with its brick-paved driveway, adorned by an elegant electric five-bar gate, leading to a spacious double garage. Upon entry, you are greeted by a grand entrance hall, featuring a striking central staircase that sets the tone for the sophistication found throughout the home.

The ground floor boasts an array of versatile living spaces, catering to every need of a modern family. A cosy family room invites relaxation for film nights, while a dedicated study provides a tranquil workspace. The sitting room, enhanced by a welcoming fireplace, offers a charming ambiance for gatherings or quiet evenings and across the hall, a superb dining room sets the stage for memorable meals and elegant entertaining.

For added convenience, a separate utility room, with direct access to the garage, ensures seamless organisation of household tasks. The heart of the home is the superb triple-aspect sitting/dining/family room. Bathed in natural light, this expansive space is impeccably appointed with custom units, high-end appliances and large island. French doors seamlessly merge indoor and outdoor living, leading to a lush garden and inviting terrace—an ideal setting for entertaining and leisurely gatherings.

Ascend the staircase to the first floor, where luxury abounds. The principal bedroom is a haven of comfort and style, featuring a private balcony - perfect for enjoying a morning coffee. Dual walk-in dressing rooms offer ample storage, while the ensuite shower/bathroom provides a spa-like retreat for relaxation and rejuvenation.

Four additional double bedrooms, each generously proportioned, offer comfort and privacy for family members or guests. Two of these bedrooms boast ensuite shower rooms, elevating the level of luxury and convenience. A separate family bathroom provides functionality and completes the upper level.

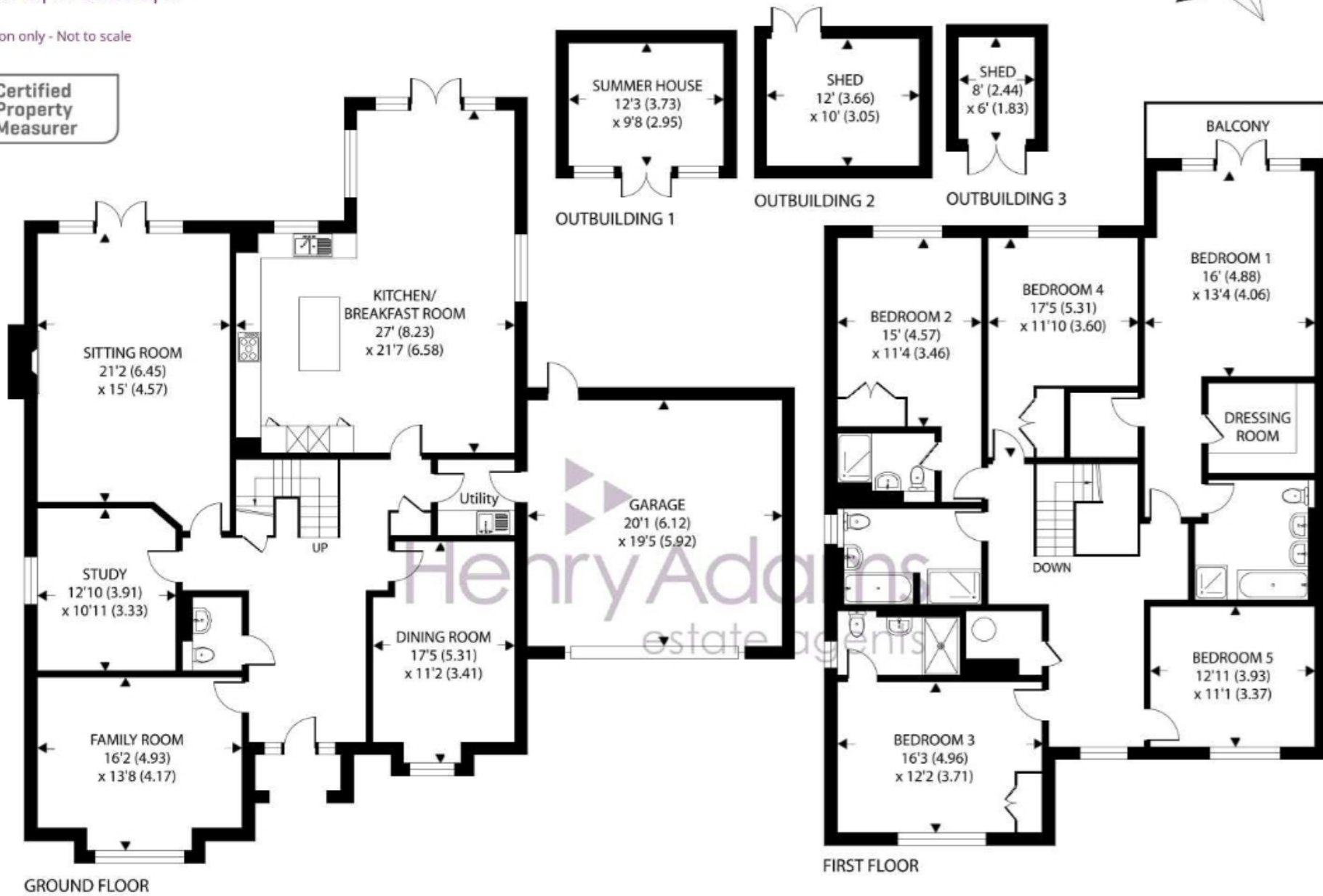
Throughout both floors, underfloor heating ensures year-round comfort, while enhancing energy efficiency and ambiance. Yew Tree House epitomizes modern living at its finest, combining exquisite craftsmanship and a thoughtful design which create a sanctuary you'll be proud to call home.





Approximate Area = 3433 sq ft / 318.9 sq m
 Garage = 388 sq ft / 36 sq m
 Outbuilding = 286 sq ft / 26.6 sq m
 Total = 4107 sq ft / 381.5 sq m

For identification only - Not to scale



Outside

Beyond its luxurious interiors, Yew Tree House enjoys a prime location in Easebourne, a picturesque village offering a tranquil escape from the hustle and bustle of everyday life, yet within easy reach of essential amenities, schools, and recreational facilities.

Outside, the enchanting garden awaits, meticulously maintained with mature borders and specimen trees including an olive, fig and walnut that offer privacy and seclusion. Spend leisurely afternoons amidst the natural beauty or retreat to the summerhouse for moments of quiet reflection.

Yew Tree House presents a rare opportunity to own a truly exceptional property in one of Midhurst's most desirable locations. With its unrivalled combination of luxurious living spaces, picturesque surroundings, and modern amenities, this is more than just a home – it's a lifestyle masterpiece awaiting its next owner.

Location

Nestled amidst the gentle undulations of West Sussex's picturesque countryside, Midhurst stands as a quintessential English market town, infused with a rich tapestry of history and natural beauty.

Bordered by the sprawling greens of the South Downs National Park, Midhurst enjoys a privileged position, offering both tranquillity and easy access to the wonders of nature. The town itself exudes an air of timeless charm, with its cobblestone streets winding past historic buildings adorned with creeping ivy and blossoming flowers.

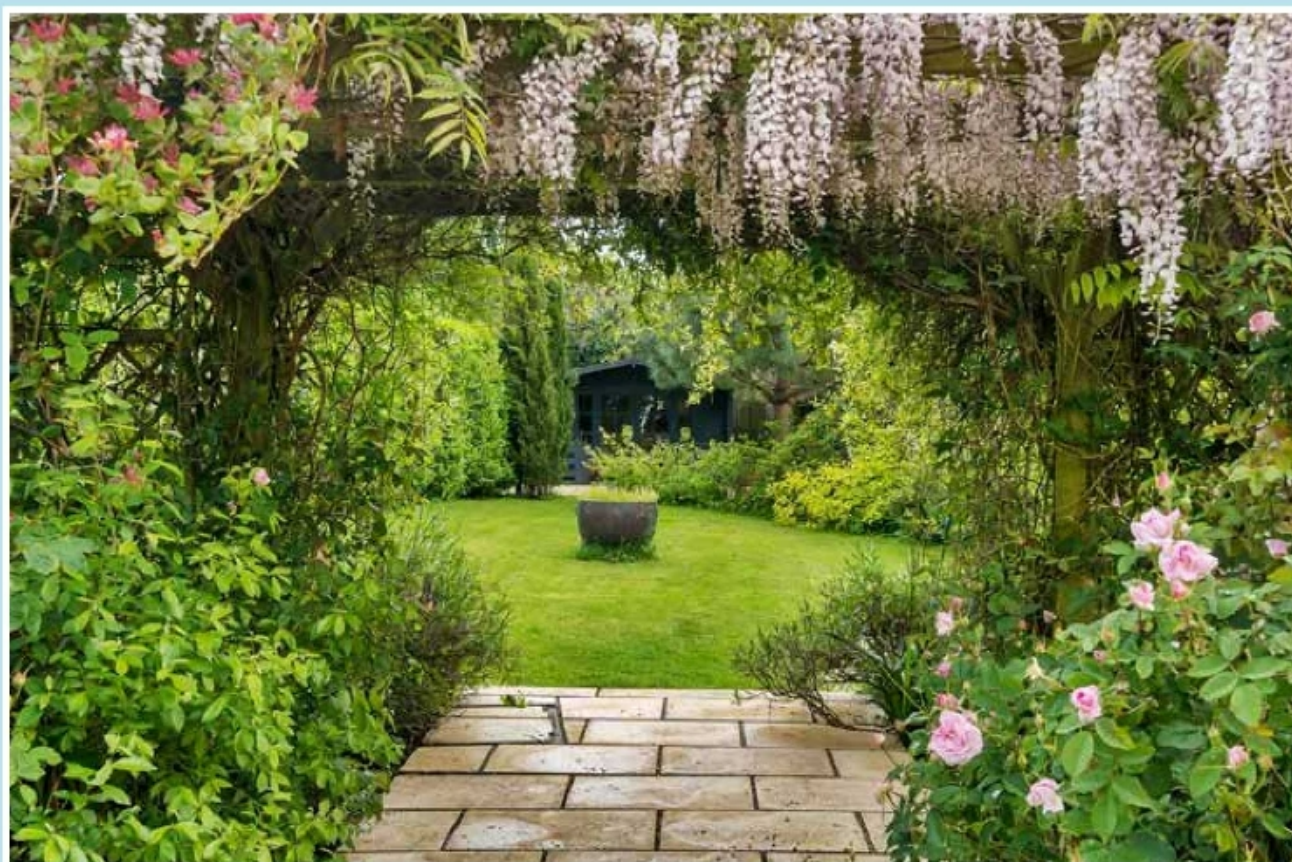
At the heart of Midhurst lies its vibrant market square, where the bustle of local life unfolds against a backdrop of centuries-old architecture. Here, you'll find a delightful array of independent shops, quaint cafes, and traditional pubs, each adding to the town's warm and inviting atmosphere.

For those with a penchant for history, Midhurst boasts a wealth of cultural treasures waiting to be discovered. The imposing ruins of Cowdray House, a Tudor mansion ravaged by fire in the 18th century, stand as a haunting reminder of the town's aristocratic past. Nearby, the medieval splendour of St. Ann's Hill offers panoramic views of the surrounding countryside, while the Tudor-era Cowdray Castle invites visitors to explore its storied halls and gardens.

Nature enthusiasts will find themselves spoiled for choice in Midhurst, with an abundance of scenic walks and outdoor activities to enjoy. From leisurely strolls along the banks of the River Rother to exhilarating hikes across the rolling hills of the South Downs, there's no shortage of ways to immerse oneself in the breathtaking beauty of the Sussex countryside.

Agents Note - Our particulars are for guidance only and are intended to give a fair overall summary of the property. They do not form part of any contract or offer, and should not be relied upon as a statement or representation of fact. Measurements, areas and distances are approximate only. Photographs may include lifestyle shots and pictures of local views. No undertaking is given as to the structural condition of the property, or any necessary consents or the operating ability or efficiency of any service, system or appliance. Please ask if you would like further information, especially before you travel to the property.





To arrange a viewing call **01730 817370**. View details online at henryadams.co.uk
Residential / Commercial / Rural / Development / Auctions