



2 Oak Villas, La Rue de la Chesnaie, St John
£749,000

BROADLANDS
FINDING YOU A HOME SINCE 1972

2 Oak Villas, La Rue de la Chesnaie

- Family home in the country
- Rural location
- Living room with functional fireplace
- Spacious eat in kitchen
- Three bedrooms
- Two bath / shower rooms
- Large enclosed garden
- Parking for five vehicles
- Sole agent
- WhatsApp Don 07829 917172 /
don@broadlandsjersey.com



2 Oak Villas, La Rue de la Chesnaie

A comfortable family home in a country setting with a large garden and plenty of parking.

The accommodation comprises entrance porch, hallway, living room, eat in kitchen, utility, three bedrooms, bathroom and shower room.

The property is larger than it looks from the outside. The living room has a functional open fireplace providing lots of heat in those cold winter months. When the weather warms up, the kitchen has double doors to the enclosed garden which is a perfect place for alfresco dining whilst the kids play on the lawn.

Close by are plenty of country walks and a regular bus runs close by. The house is available with vacant possession and no onward chain so you can be in your new home for the summer.





Living

Porch with door to hallway and stairs to first floor. Living room with functional fireplace and window to front. Kitchen with high and low level units and integrated appliances including hob, extractor, oven, microwave and dishwasher. Double doors to garden. Utility plumbed for washing / drying machine. Door to Jack and Jill bathroom which also serves as a downstairs cloakroom.

Sleeping

Downstairs bedroom with window to front, and door to Jack and Jill bathroom. Two further bedrooms and shower room on first floor.

Outside

Large, enclosed rear garden mostly laid to lawn with patio and shed. Five parking spaces. Front garden mostly laid to lawn.

Services

All mains excluding gas. Electric heating.

Education

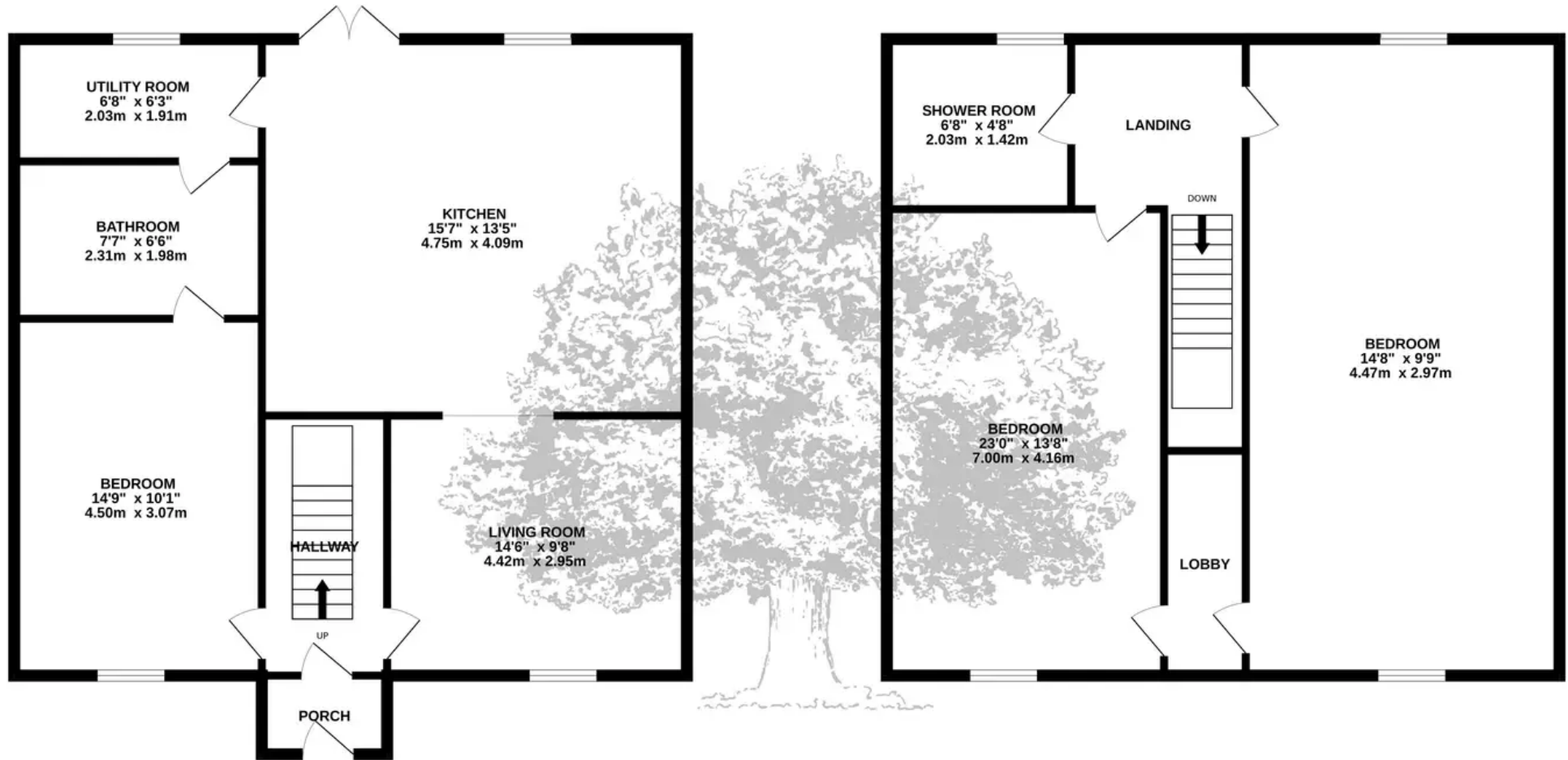
The house is in the catchment area for St John primary and Grainville secondary Schools.





GROUND FLOOR
671 sq.ft. (62.3 sq.m.) approx.

1ST FLOOR
302 sq.ft. (28.1 sq.m.) approx.



TOTAL FLOOR AREA : 973 sq.ft. (90.4 sq.m.) approx.

Whilst every attempt has been made to ensure the accuracy of the floorplan contained here, measurements of doors, windows, rooms and any other items are approximate and no responsibility is taken for any error, omission or mis-statement. This plan is for illustrative purposes only and should be used as such by any prospective purchaser. The services, systems and appliances shown have not been tested and no guarantee as to their operability or efficiency can be given.

Made with Metropix ©2024



Broadlands

Broadlands Estates, Library Place - JE2 3NL

07829 917172 • don@broadlandsjersey.com • www.broadlandsjersey.com/

BROADLANDS

FINDING YOU A HOME SINCE 1972