



2 Bedroom Mid Terraced House located in Witham.

Find us on..



JOHN ALEXANDER
ESTATE AGENTS

Carraways Witham CM8 1XW



2



1



1



C



C



635
sq ft

FULL DESCRIPTION

OVERVIEW

We are pleased to offer this two bedroom terraced home, backing onto a nature reserve and situated on a quiet cul-de-sac in South East Witham. Offering allocated parking for two cars and a west facing garden. Viewing recommended

GROUND FLOOR

LIVING ROOM

14' 7" x 12' 11" (4.44m x 3.94m)

Window to front aspect and under-stair storage cupboard

KITCHEN/ DINER

12' 11" x 9' 2" (3.94m x 2.79m)

Double doors and window to rear garden. Built in wall and base units with integrated electric oven, gas hob with extractor, plus space for freestanding fridge freezer, washing machine and dishwasher. Wall mounted gas combi-boiler

FIRST FLOOR

BEDROOM ONE

12' 5" x 10' 7" (3.78m x 3.23m)

Window to front aspect. Built in double wardrobes and over-stair cupboard plus recess for dressing table

BEDROOM TWO

11' 2" x 7' 10" (3.4m x 2.39m)

Window to rear aspect

SHOWER ROOM

8' 9" x 4' 9" (2.67m x 1.45m)

Window to rear aspect, wash basin with storage, corner shower unit and WC

OUTSIDE

Side access gate from rear garden to two allocated parking spaces. The fence enclosed rear garden is West facing and comprised of a patio area, grassed area and decked area

Asking Price Of
£290,000



JOHN ALEXANDER
ESTATE AGENTS



JOHN ALEXANDER
ESTATE AGENTS



JOHN ALEXANDER
ESTATE AGENTS

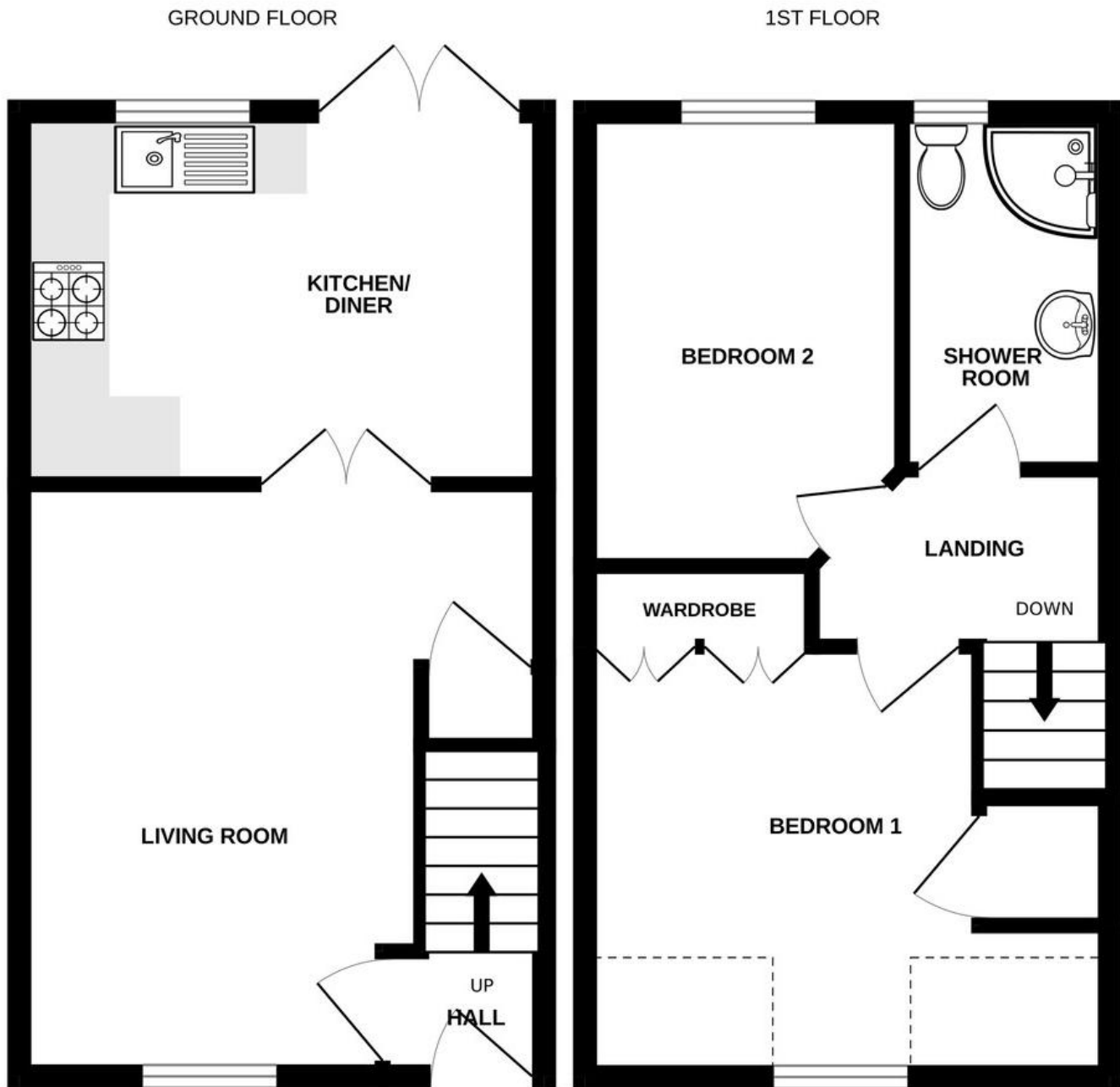




Carraways, Witham CM8 1XW



FLOORPLAN



Whilst every attempt has been made to ensure the accuracy of the floorplan contained here, measurements of doors, windows, rooms and any other items are approximate and no responsibility is taken for any error, omission or mis-statement. This plan is for illustrative purposes only and should be used as such by any prospective purchaser. The services, systems and appliances shown have not been tested and no guarantee as to their operability or efficiency can be given.
Made with Metropix ©2024

CONTACT
1 Church Road
Tiptree
Essex
CO5 0LG

E info@john-alexander.co.uk
T 01621 814334 www.john-alexander.co.uk

Find us on..

