

To Let 2 bed flat



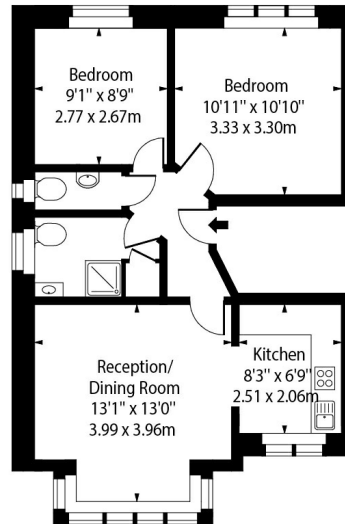
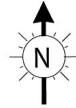
- › 2 BEDROOM
- › FIRST FLOOR CONVERSION
- › LOUNGE
- › FITTED KITCHEN
- › ELECTRIC HEATING WITH ENERGY EFFICIENT

2 Bedroom Flat To Let Nice two bedroom first floor flat on a quiet tree-lined residential road. Cleverly designed to maximise space, creating an ideal spot for a couple or 2 sharers looking to live in North West London.





St George's Road NW11



First Floor

Approx Gross Internal Area 525 Sq Ft - 49 Sq M

For Illustration Purposes Only - Not to Scale

This floor plan is for guidance only. Measurements are approximate and not to scale. Windows and doors openings are approximate. Whilst care is taken in the preparation of this plan, please check all dimensions, shapes and compass bearings before making any decisions that are reliant on the information displayed. The services, systems and appliances shown have not been tested and no guarantee as to their operability or efficiency can be given.

---

ST GEORGES ROAD, LONDON, NW11 OLR

Modern two bedroom first floor flat on a quiet tree-lined residential road.  
Cleverly designed to maximise space, creating an ideal spot for a couple or 2 sharers  
looking to live in North West London.

The property is furnished and comprises a large living room and semi-open plan kitchen, as  
well as a bathroom, with a separate WC along with Two double bedrooms with excellent  
storage make this a perfect choice for couples and sharers alike.

Available after 8th July

No viewings Fri after 6pm or Saturdays No move in Fri Sat or Sun

Located moments from the excellent shops and restaurants of Temple Fortune, including an  
M&S food hall, as well as many fabulous cafes, the property is further served by Golders  
Green underground station (Northern Line) and bus/coach terminal, which are both within  
walking distance. The main bus route to Baker Street (No. 13) is easily accessible from the  
top of the road.



34 Golders Green Road, London NW11 8LL

murray@dreamviewstates.co.uk

020 8455 0055

best  
agent