



Flat 64, St. Johns Wood Court, St. Johns Wood Road

London

£4,500 pcm



# Flat 64

St. Johns Wood Court, London

We are delighted to present this spacious apartment located in a secure, well maintained development with an on-site porter. The apartment comprises of large principal bedroom with en-suite, double bedroom, single bedroom/study, luxurious family bathroom, large living room, dining room and a separate kitchen.

The development is situated on St John's Wood Road, directly opposite Lords Cricket Ground and you are within walking distance to St John's Wood station (Jubilee line). Close by is St John's Wood high street where you can find many restaurants, shops and supermarkets.

Council Tax band: G

Tenure: Leasehold

EPC Energy Efficiency Rating: C

EPC Environmental Impact Rating: C







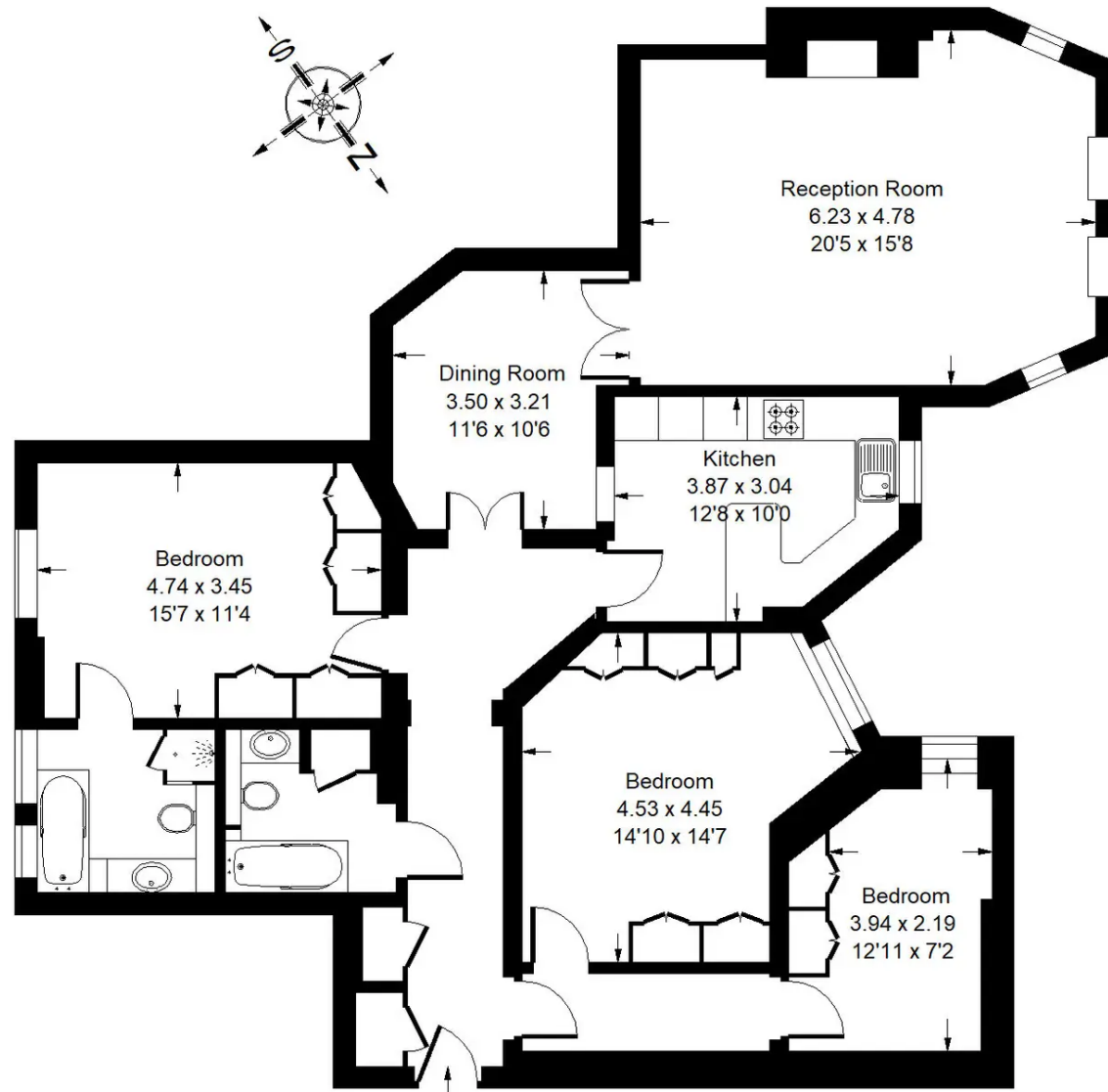






# St. Johns Wood Court, NW8

Approx. Gross Internal Area  
125.4 sq m / 1350 sq ft



## Second Floor

Whilst every attempt has been made to ensure the accuracy of the floor plan, measurements are approximate and not to scale.  
No guarantee is given on the total square footage of the property quoted on the plan. Figures given are for guidance.  
Plan is for illustration purposes only, not to be used for valuations.





## UK Homes Enterprise

UK Homes Enterprise, 276-278 Old Brompton Road - SW5 9HR

020 7602 2060

[info@ukhomesent.com](mailto:info@ukhomesent.com)

[www.ukhomesent.com/](http://www.ukhomesent.com/)

