



## Plot 11, The Mallows, Brooke

A three bedroom detached bungalow with a double garage and off street parking

**DURRANTS**  
SINCE 1853

# The Development

The Mallows is a stunning new collection of homes, situated in the charming village of Brooke in Norfolk. The phase 2 release comprises a mixture of four bedroom houses and three bedroom bungalows, each benefitting from a double garage and off street parking. With only 6 homes available in this phase, The Mallows is a unique and exclusive development, ideal for those seeking a community feel.

The development has been hand crafted by Vello Homes, a Norfolk based, family run housebuilder with over 30 years' experience. Vello Homes specialise in small scale, high quality, bespoke housing, allowing them to focus their attention on each individual dwelling to create unique qualities and desirable characteristics. They pride themselves on creating energy efficient, low maintenance homes, using only their reputable and dedicated team of tradespeople.

## Local Information

The Mallows is situated in the charming village of Brooke, Norfolk, approximately a 20 minute drive from the heart of Norwich. With its medieval church, sleepy cottages and beautiful meres, Brooke has been named an 'up and coming' location for homeowners. Brooke benefits from a farm shop, butchers, hairdressers, vets, cricket club, bowls club, two pubs, village hall, a garage and a local school. The village is conveniently placed for easy access to Norwich with regular bus services running every hour.



### Tenure

Freehold

### Local Authority

South Norfolk District Council

### Council Tax

TBC

### Service Charge

Approximately £386 per annum. Please contact the agent for full details.

### Energy Performance

Energy Performance Certificate is available upon request.

### Viewing

Strictly by appointment with Savills.

Energy Efficiency Rating		
	Current	Potential
<i>Very energy efficient - lower running costs</i>		
(92+) <b>A</b>		
(81-91) <b>B</b>	<b>83</b>	<b>83</b>
(69-80) <b>C</b>		
(55-68) <b>D</b>		
(39-54) <b>E</b>		
(21-38) <b>F</b>		
(1-20) <b>G</b>		
<i>Not energy efficient - higher running costs</i>		
<b>England, Scotland &amp; Wales</b>	EU Directive 2002/91/EC	

# Specification

When entering Plot 11, you are drawn into the spacious entrance hall, through the double doors into the kitchen. The kitchen boasts a modern finish with a large island and further double doors that lead into the garden. There is also a utility room with internal access to the double garage and a separate living room with fireplace. The principal bedroom features a dressing room and en suite and there is a further two bedrooms, a family bathroom, storage cupboard and WC.

## General

- Traditional brick and thermal block construction with cavity insulation
- Clay roof tiles
- White UPVC double glazed windows and doors
- Bi-folding or double doors onto patio area
- Modulao LVT flooring to kitchen, diner, hallway and cloakroom
- Carpets in lounge, study and bedrooms
- All internal walls painted Light Grey
- Moulded skirtings and architrave painted white
- Oak panel internal doors with polished chrome fittings
- Staircase with chamfered spindles and hardwood handrail
- 6 Year CML Professional Consultants Certificate

## Kitchens

- Fully fitted kitchen with choice of units, handles and solid quartz worktops \*
- NEFF\* double oven and large Induction hob
- Stainless steel chimney hood
- Fully Integrated frost-free fridge freezer and dishwasher
- Stainless steel 1½ bowl sink with mixer tap

## Electrical, Heating and Lighting

- Energy efficient air source heat pump for heating and hot water
- Underfloor heating throughout ground floor with radiators to upper floor
- Energy efficient lighting throughout
- Slimline white sockets throughout

- Fibre Broadband and CAT 5
- TV Aerial and amplifier fitted
- Intruder Alarm system
- Mains Water, Electric and Drainage
- PV (solar) panel system

## Bathrooms and En Suites

- Contemporary white sanitaryware
- Hansgrohe Chrome taps and fittings
- Vanity units to bathroom and en suite
- Chrome heated towel rails to bathroom and en suite
- Porcelanosa ceramic wall tiling to bathroom, en suite and cloakrooms

## External

- Powered roller shutter garage doors
- Lighting to front and rear
- Landscaped front garden, seeded rear garden (Optional extra for Turfed rear garden)
- Bradstone patio and paths
- Brick weave driveway
- Boundary fencing between properties
- Lighting and power supplied to garages
- Outside tap

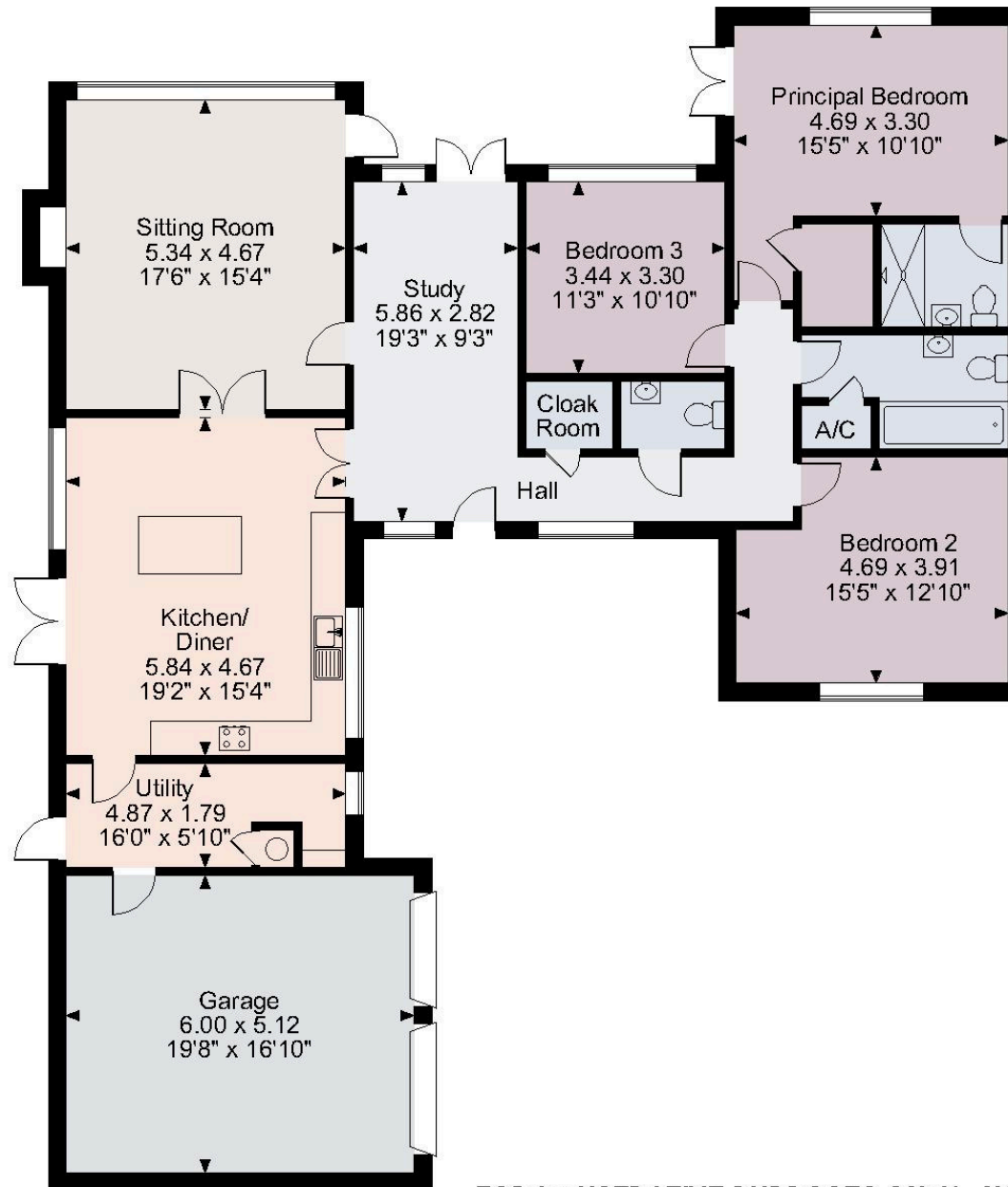
## Agents Note

- Please note plots 12 and 13, which are 3 bedroom bungalows, are also available. Please contact the agent for further information.
- Please note that internal images are of Plot 9 and are for illustrative purposes only.





# Floor plan



Ground Floor

**FOR ILLUSTRATIVE PURPOSES ONLY - NOT TO SCALE**

The position & size of doors, windows, appliances and other features are approximate only.

© ehouse. Unauthorised reproduction prohibited. Drawing ref. dig/8598059/JRD



**Florence Bond**

Norwich New Homes  
+44 (0) 7974 064 740  
florence.bond@savills.com

**George Berry**

New Homes  
01379 852217  
george.berry@durrants.com



**Important Notice**

Savills, its clients and any joint agents give notice that 1: They are not authorised to make or give any representations or warranties in relation to the property either here or elsewhere, either on their own behalf or on behalf of their client or otherwise. They assume no responsibility for any statement that may be made in these particulars. These particulars do not form part of any offer or contract and must not be relied upon as statements or representations of fact. 2: Any areas, measurements or distances are approximate. The text, photographs and plans are for guidance only and are not necessarily comprehensive. It should not be assumed that the property has all necessary planning, building regulation or other consents and Savills has not tested any services, equipment or facilities. Purchasers must satisfy themselves by inspection or otherwise. All prices quoted are correct at the time of going to print. 20240521NRD230108

