



## Flat 3 Jade Apartments

Blackpool, FY4 1NX

- **TWO BEDROOM FIRST FLOOR FLAT IN FANTASTIC LOCATION**
- **CLOSE TO BLACKPOOL PLEASURE BEACH**
- **LOW MOVE IN COSTS £738.46**
- **ALLOCATED PARKING SPACE**

**£600 pcm**

EPC Rating '69'





## Property Description

### ENTRANCE HALL

Entrance door from communal hall, wood laminate flooring.

### LOUNGE/DINER

10' 5" x 9' 4" (3.18m x 2.84m) Double glazed bay window to the front, electric wall heater, television point, wood laminate flooring.

### KITCHEN

7' 0" x 7' 0" (2.13m x 2.13m) Double glazed window to the front, fitted kitchen with wall and base units with work surface, cooker, space for white goods, wall tiling, vinyl flooring

### BEDROOM ONE

10' 6" x 8' 3" (3.2m x 2.51m) Double glazed window to the front, electric wall heater, wood laminate flooring.

### BEDROOM TWO

8' 8" x 8' 2" (2.64m x 2.49m) Double glazed window to the rear, electric wall heater, wood laminate flooring.

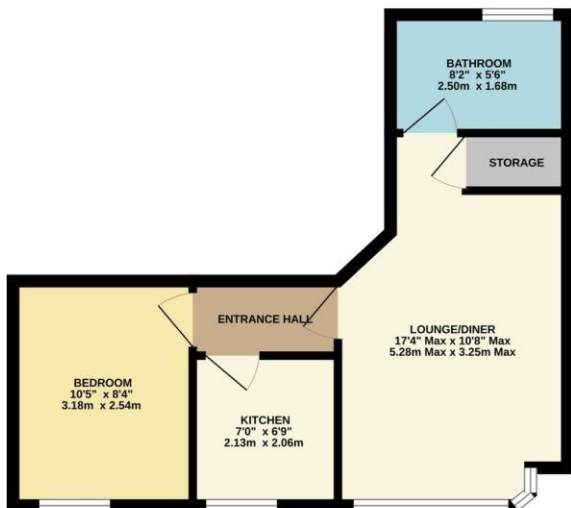
#### SHOWER ROOM

7' 0" x 4' 3" (2.13m x 1.3m) Three piece suite comprising: Shower cubicle with electric shower, close coupled W.C and wash hand basin, heated towel rail, UPVC wall cladding, vinyl flooring.

#### FURNITURE

The property is classed as unfurnished, however if a tenant would like to lease the furniture for £100 for the length of the tenancy. Should a TV break the landlord will not replace this.

SECOND FLOOR  
370 sq.ft. (34.3 sq.m.) approx.



21 Counce Street  
Blackpool  
Lancashire  
FY1 3LA

[www.moveholmes.co.uk](http://www.moveholmes.co.uk)  
01253 928200  
[enquiries@moveholmes.co.uk](mailto:enquiries@moveholmes.co.uk)

Agents Note: Whilst every care has been taken to prepare these sales particulars, they are for guidance purposes only. All measurements are approximate and are for general guidance purposes only and whilst every care has been taken to ensure their accuracy, they should not be relied upon and potential buyers are advised to recheck the measurements.