



Onslow Drive

Sidcup
DA14 4PB

Freehold

Larger than average 3 bedroom semi detached house
Chain Free
Easy access to local schools and Albany Park station
Downstairs shower room & upstairs bathroom
Garage & off street parking
Large rear garden



FULL DESCRIPTION

Offered for sale is this larger than average 3 bedroom semi detached house situated in a popular road that offers access to Albany Park train station, local shops and parks including Footscray Meadows.

We feel it would make a great family home and briefly comprises of: Entrance hall, front lounge, second reception, large rear kitchen, a down stairs shower room, upstairs bathroom and three bedrooms.

Externally there is a large rear garden, garage and off street parking. *chain free*

Directions

From our Sidcup office turn left into Station Road and under the railway bridge. At the traffic lights turn left into Faraday Avenue. At the end of the road turn right into Bexley Lane and immediate first left into Longmead Drive and then the first turning on the right into Onslow Drive. Closest Stations: Albany Park (0.20 mi) Sidcup (0.86 mi) Bexley (1.14 mi) Closest Schools: Cleeve Park School (0.32 mi) Hurst Primary School (0.57 mi)



Local Authority
Council Tax Band
EPC Rating

Bexley London Borough Council

D
D

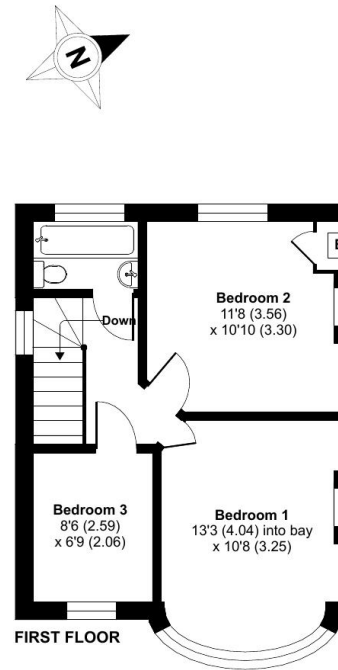
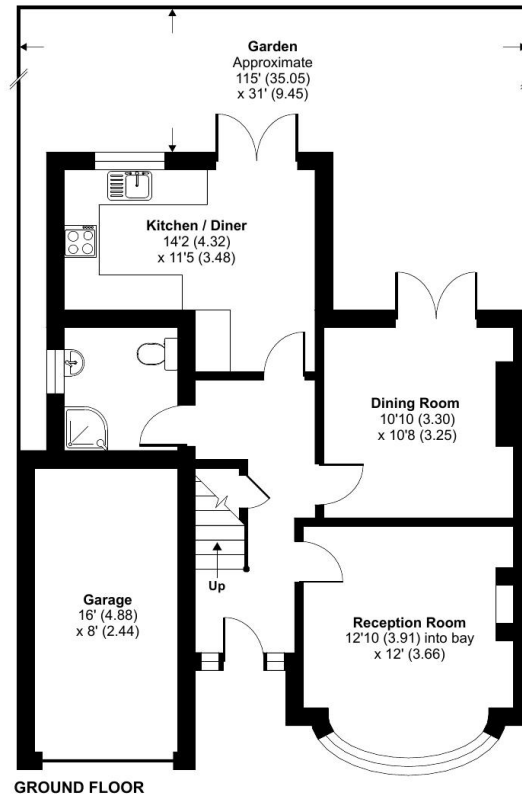
Onslow Drive, Sidcup, DA14

Approximate Area = 990 sq ft / 92 sq m

Garage = 132 sq ft / 12.2 sq m

Total = 1122 sq ft / 104.2 sq m

For identification only - Not to scale



Certified
Property

Floor plan produced in accordance with RICS Property Measurement Standards incorporating International Property Measurement Standards (IPMS2 Residential). ©nichecom 2024.

Drewery Property Consultants

128 Station Road
Sidcup
Kent
DA15 7AF

Contact

020 8269 6605
info@drewery.co.uk
www.drewery.co.uk

Agents Note: Whilst every care has been taken to prepare these particulars, they are for guidance purposes only. All measurements are approximate and are for general guidance purposes only and whilst every care has been taken to ensure their accuracy, they should not be relied upon and potential buyers/tenants are advised to recheck the measurements.