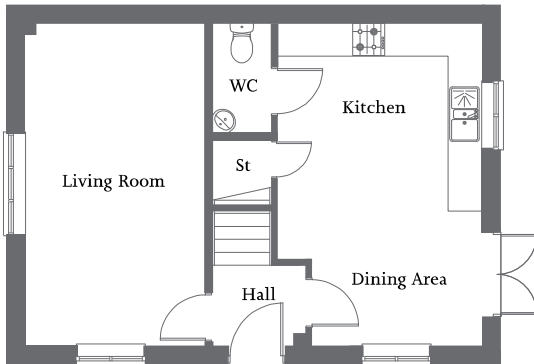


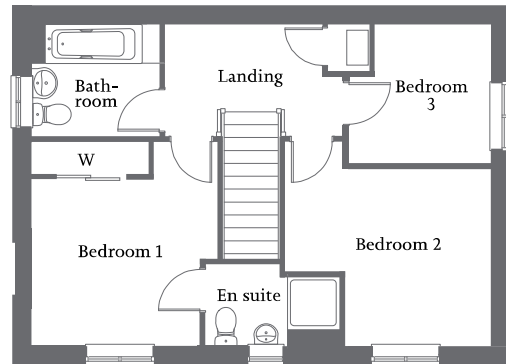


| Dual aspect living room | Kitchen/dining area with French Doors |  
| Bedroom 1 with en suite and fitted wardrobe | Two further bedrooms and family bathroom | Allocated parking spaces |



**Ground Floor**

Living Room	5.63m x 3.14m	18'6" x 10'4"
Kitchen/ Dining Area	5.63m x 3.57m	18'6" x 11'9"



**First Floor**

Bedroom 1 (incl. wardrobe)	3.58m x 3.20m	11'9" x 10'6"
En suite	2.35m x 1.43m	7'8" x 4'8"
Bedroom 2	3.60m x 3.10m	11'9" x 10'2"
Bedroom 3	2.50m x 2.44m	8'2" x 8'0"
Bathroom	2.19m x 1.96m	7'2" x 6'5"