

FOR SALE



Middlefields Drive,, Whiston
Asking Price Of £230,000


MARTIN&CO



Middlefields Drive,, Whiston

3 Bedrooms, 1 Bathroom

Asking Price Of £230,000

- Three bedroom
- Drive and garage
- Lounge
- Dining room
- Well appointed

Don't miss out on this beautifully presented, contemporary styled three bedroom semi-detached home located in the sought-after area of Whiston. Situated in a convenient location with easy access to commuter links, public transport, and local amenities, this home is sure to impress.

As you enter the property, you are greeted with an inviting entrance hall featuring a spindled staircase leading to the first floor landing. The bay windowed lounge boasts a charming feature fire surround, creating a cozy and welcoming atmosphere. The separate dining room provides the perfect space for formal gatherings or everyday meals.

The kitchen is a true highlight, featuring a range of fitted wall and base units in contrasting colours, offering ample storage space for all your culinary needs. The first floor landing leads to three well-proportioned bedrooms, including two double bedrooms and a larger than average single bedroom. The family bathroom is fitted with a pristine white three-piece suite, providing a relaxing space to unwind.

Outside, the property boasts a gated drive leading to a single garage and a much larger than average rear



garden. The rear garden is a true oasis, featuring a patio area, a well-maintained lawn, and pebbled areas, perfect for outdoor entertaining or simply enjoying the sunshine. The garden also offers access to the outbuildings, providing versatile space for your specific needs.

With its modern styling, spacious rooms, and convenient location, this property has something to offer a variety of purchasers. Don't wait, schedule a viewing today to fully appreciate all that this stunning home has to offer.

ENTRANCE HALL Having a spindled staircase to the first floor landing with under stairs storage. Having laminate flooring, rear facing window, side facing entrance door and store cupboard housing the central heating boiler.

LOUNGE A cosy lounge with laminate flooring. The focal point of the room is the feature fire surround

which houses the living flame gas fire and there is a front facing bay window.

DINING ROOM With laminate flooring, open inset to the chimney breast and front facing window.

KITCHEN A contemporary style kitchen with contrasting wall and base units, wall units include extractor hood. Base units are set beneath worktops which include a single bowl sink, hob, oven, plumbing for washing machine, tiled splash backs, pantry, rear facing entrance door and rear facing window.

LANDING With spindled balustrade, loft access and rear facing window.

BEDROOM ONE A good double size room with laminate flooring and front facing window.

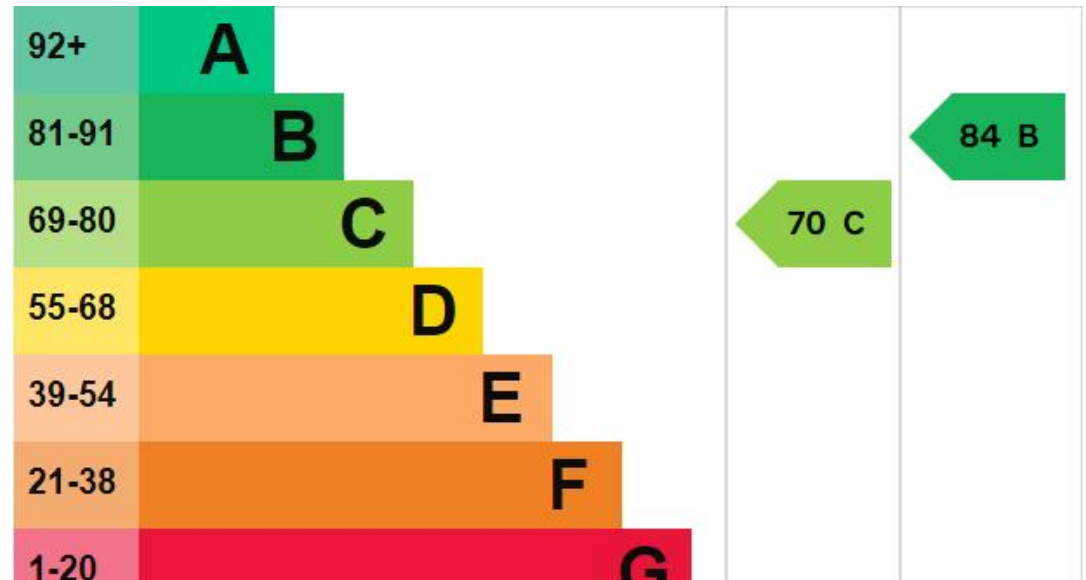
BEDROOM TWO A good size double bedroom with laminate flooring and front facing window.



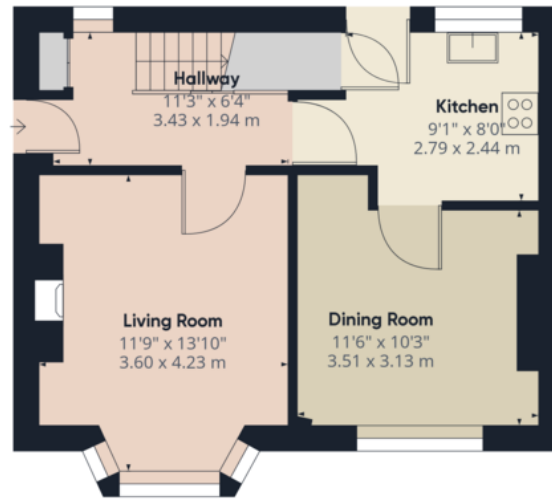
BEDROOM THREE A good size single bedroom, currently used as an office with laminate flooring, built in storage cupboard and side facing window.

BATHROOM Having a white three piece suite which includes a low flush w.c, wash hand basin, bath with shower set over, extractor fan, tiled walls and rear facing window.

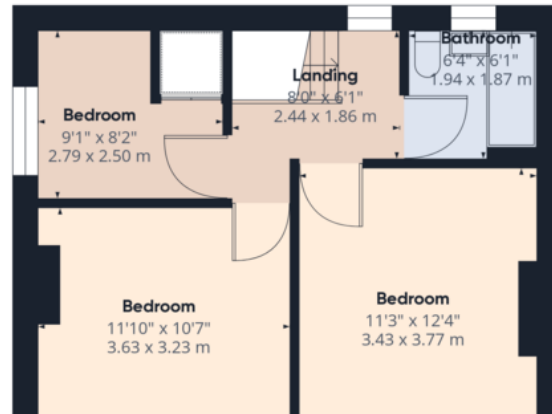
OUTSIDE To the front of the property is a gated drive which leads to the single garage and lawn to the front. To the rear is an enclosed garden with paved patio, generous size lawn and pebbled areas. There is an out building / storeroom and w.c.







Ground Floor



Approximate total area⁽¹⁾
839.4 ft²
77.98 m²

(1) Excluding balconies and terraces

While every attempt has been made to

Martin & Co Rotherham

5 Worry Goose Lane • Whiston • Rotherham • S60 4AA
T: 01709 544982 • E: rotherham@martinco.com

01709 544982

<http://www.martinco.com>



Accuracy: References to the Tenure of a Property are based on information supplied by the Seller. The Agent has not had sight of the title documents. A Buyer is advised to obtain verification from their Solicitor. Items shown in photographs including but not limited to carpets, fixtures and fittings are not included unless specifically mentioned within the sales particulars. They may however be available by separate negotiation. Buyers must check the availability of any property and make an appointment to view before embarking on any journey to see a property. No person in the employment of the agent has any authority to make any representation about the property, and accordingly any information given is entirely without responsibility on the part of the agents, sellers(s) or lessors(s). Any property particulars are not an offer or contract, nor form part of one. **Sonic / Laser Tape:** Measurements taken using a sonic / laser tape measure may be subject to a small margin of error. **All Measurements:** All Measurements are Approximate. **Services Not tested:** The Agent has not tested any apparatus, equipment, fixtures and fittings or services and so cannot verify that they are in working order or fit for the purpose. A Buyer is advised to obtain verification from their Solicitor or Surveyor.