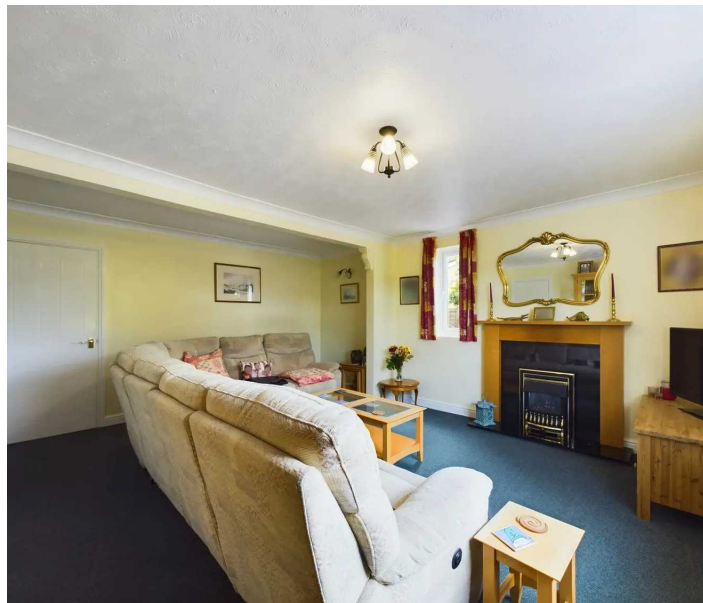
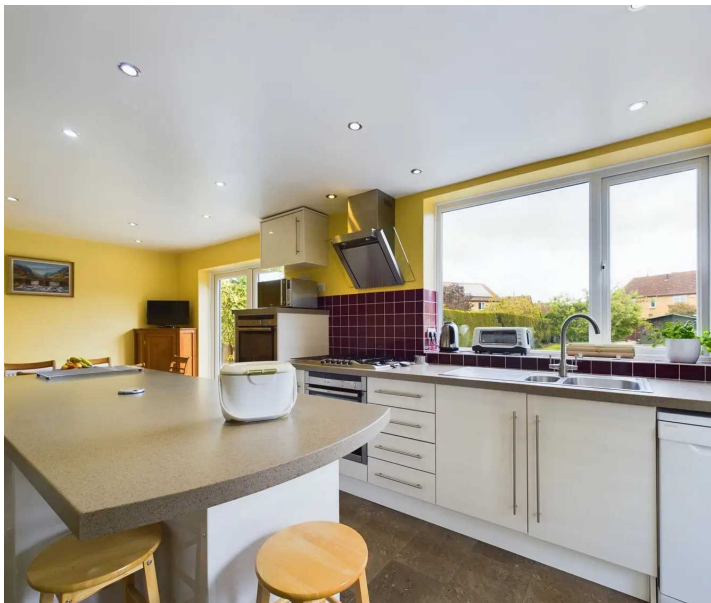




47 Sapley Road, Hartford
£495,000

 **Oliver James**
Property Sales & Lettings



47 Sapley Road

Hartford, Huntingdon

An extended semi-detached home of 1393 sq.ft / 129 sq.metres in a non estate location, sited on a large plot of 0.18 acres with plenty of driveway parking and a timber workshop with power & lighting.

Council Tax band: D

Tenure: Freehold

- Extended, semi-detached home.
- Four double bedrooms.
- The Gross Internal Floor Area is approximately 1393 sq.ft / 129 sq.metres.
- The Total Plot Size is approximately 0.18 acres.
- Spacious kitchen / dining room overlooking the large rear garden.
- Two generously sized reception rooms.
- Timber workshop with power and lighting, summer house and further timber storage shed.
- Offering loads of potential for further extension, reconfiguration or loft conversion (subject to permissions)
- Large family bathroom & potential for an en-suite shower room.
- EPC: TBC.



