



**Flat 39, Seaview Court Clayton Road, Selsey, PO20 9HJ**

Guide Price **£165,000** Leasehold

# Flat 39, Seaview Court, Clayton Road, Selsey, Chichester, PO20 9HJ

Nestled on the first floor of a seafront retirement complex, this apartment offers a tranquil retreat with stunning panoramic views of the English Channel.

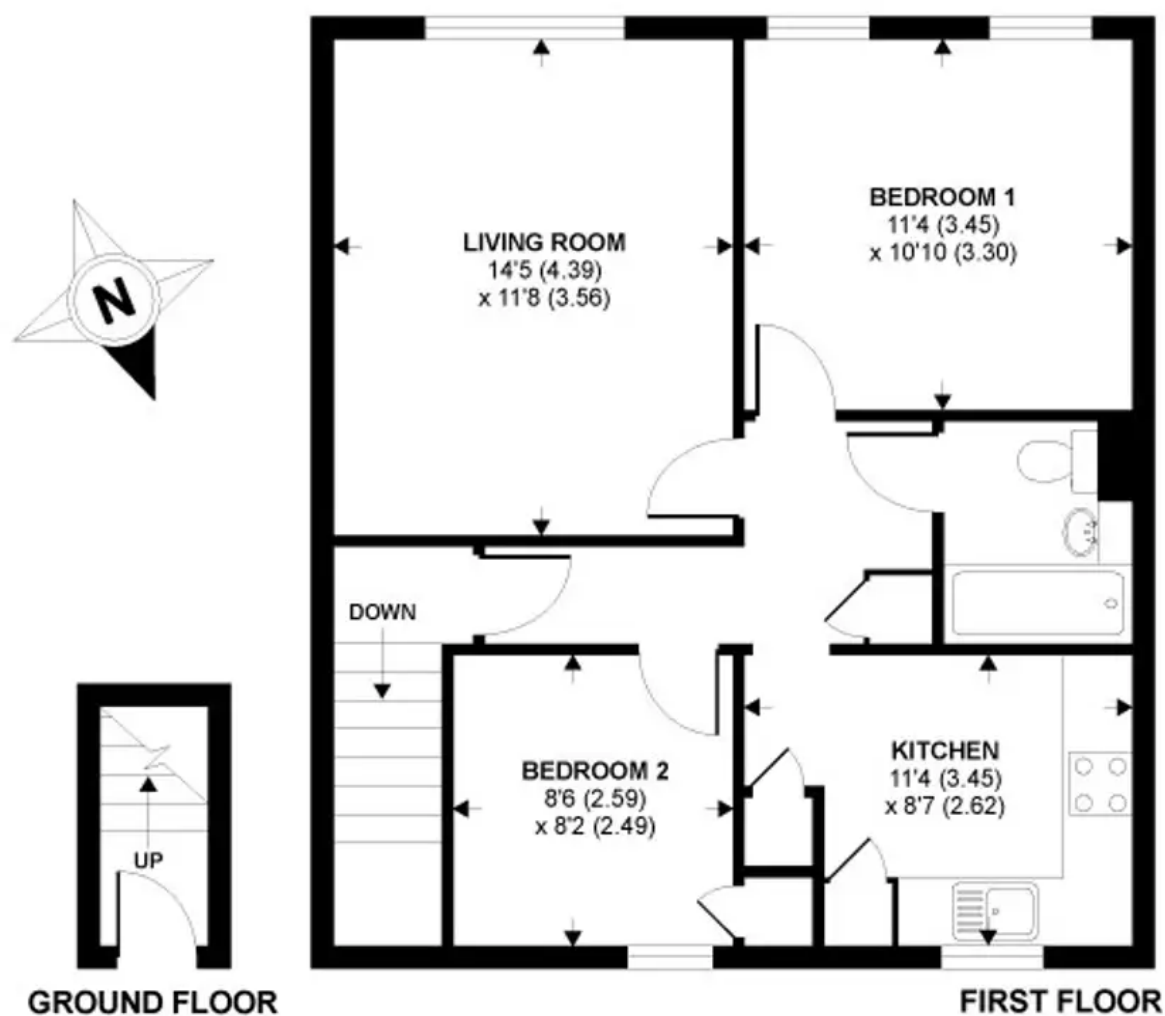
Boasting two bedrooms, the property features a spacious living room that opens up to the breath-taking scenery. The re-fitted kitchen, updated since 2021, is both stylish and functional, offering modern amenities for ease of living.

Designed for residents aged 60 and over, this community provides a supportive and secure environment, with communal gardens and parking available. Residents can enjoy the comforts of the complex, including a residents' lounge and a convenient laundry room, adding to the ease of retirement living.

Council Tax: C, Leasehold, EPC Rating: D

- First Floor Sea Front Retirement Apartment
- Panoramic Views
- Two Bedrooms
- Living Room With Views
- Re-fitted Kitchen since 2021
- Over 60's Complex
- Communal Gardens and Parking
- Communal facilities including residents lounge and laundry room





## Seaview Court, Clayton Road

APPROX. GROSS INTERNAL FLOOR AREA 640 SQ FT 59.4 SQ METRES

Whilst every attempt has been made to ensure the accuracy of the floor plans contained here, measurements of doors, windows and rooms are approximate and no responsibility is taken for any error, omission or mis-statement. These plans are for representation purposes only as defined by RICS Code of Measuring Practice and should be used as such by any prospective purchaser. The services, systems and appliances listed in this specification have not been tested by Henry Adams and no guarantee as to their operating ability or their efficiency can be given.

## View from living room & bedroom 1



## Henry Adams - Selsey

Henry Adams LLP, 122 High Street, Selsey - PO20 0QE

01243 606789

[selsey@henryadams.co.uk](mailto:selsey@henryadams.co.uk)

[www.henryadams.co.uk/](http://www.henryadams.co.uk/)

Agents Note - Our particulars are for guidance only and are intended to give a fair overall summary of the property. They do not form part of any contract or offer, and should not be relied upon as a statement or representation of fact. Measurements, areas and distances are approximate only. Photographs may include lifestyle shots and pictures of local views. No undertaking is given as to the structural condition of the property, or any necessary consents or the operating ability or efficiency of any service, system or appliance. Please ask if you would like further information, especially before you travel to the property.