



 **HORTONS**

3 Beaumont Avenue, Hinckley
£1,000 pcm

3 Beaumont Avenue

Hinckley

Presenting a charming 2 bedroom semi-detached house located in a sought-after area close to Hinckley Town Centre.

Council Tax band: B

Tenure: Freehold

EPC Energy Efficiency Rating: E

EPC Environmental Impact Rating: E

- Driveway
- Open Plan Kitchen/Dining Space
- Conservatory
- Beautiful Rear Garden
- Close To Hinckley Town Centre
- Available NOW





3 Beaumont Avenue

Hinckley, Hinckley

Presenting a charming 2 bedroom semi-detached house located in a sought-after area close to Hinckley Town Centre.

Council Tax band: B

Tenure: Freehold

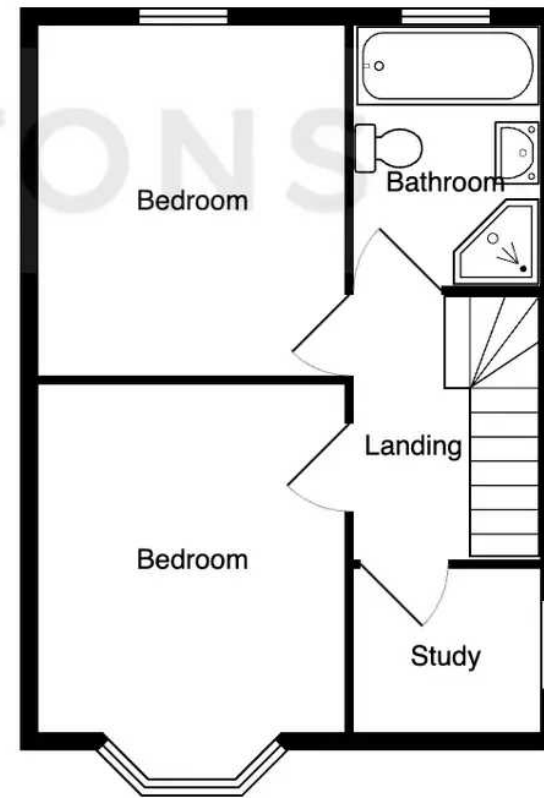
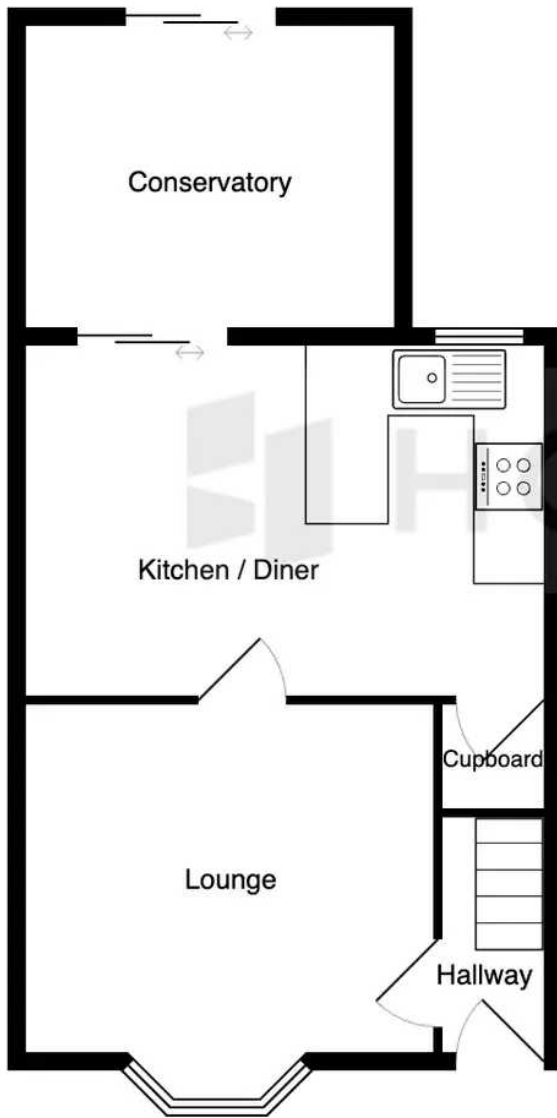
EPC Energy Efficiency Rating: E

EPC Environmental Impact Rating: E

- Driveway
- Open Plan Kitchen/Dining Space
- Conservatory
- Beautiful Rear Garden
- Close To Hinckley Town Centre
- Available NOW









Sam Cable - Hortons

Unit 11, Brook Park Gaddesby Lane - LE7 4ZB

0116 350 0605 • sc@hortons.co • hortons.co/partners/85714/