



3 Bedroom Semi Detached House located in Feering.

Find us on..



JOHN ALEXANDER
ESTATE AGENTS

London Road,
Feering,
CO5 9EP



3



1



2



B



D



818
sq ft

Offers Over
£450,000

FULL DESCRIPTION

OVERVIEW

We are delighted to offer this stunning three bedroom, period, semi detached, farmhouse style cottage WITH NO ONWARD CHAIN. Amassing approximately 3/4 acre (STS) looking out over fields, a barn and paddock, could this country home be the country lifestyle you've always wanted? VIEWING RECOMMENDED

OUTSIDE & LOCATION

This charming family home is situated in Feering, just off the A12. There is a large driveway to the front with ample off-road parking for multiple vehicles, leading to a gated front garden. The grounds occupy around 3/4 acre (STS) and are mainly laid to lawn. There is a barn/ stable with power and lighting, presently accommodating two small horses leading to a paddock; chicken coop and run; there is a barbeque area overlooking the fields and a separate patio outside the kitchen.

ENTRANCE HALL

Doors off to living room and dining area plus stairs to first floor

LIVING ROOM

15' 9" x 10' 1" (4.8m x 3.07m)

Windows to front and side aspects plus fireplace

KITCHEN/DINER

15' 10" x 9' 11" (4.83m x 3.02m)

Country style kitchen with window to front and rear aspects. Floor-standing oil boiler and radiator. Fitted wall and base units, freestanding cooker and dishwasher (to remain)

UTILITY ROOM

7' 3" x 4' 6" (2.21m x 1.37m)

Space for washing machine and fridge freezer

OUTSIDE TOILET

FIRST FLOOR

BEDROOM ONE

12' 7" x 11' 2" (3.84m x 3.4m)

Window to front aspect and cupboard

BEDROOM TWO

11' 0" x 7' 6" (3.35m x 2.29m)

Window to front aspect and cupboard

BEDROOM THREE

8' 3" x 7' 3" (2.51m x 2.21m)

Window to rear aspect

BATHROOM

8' 0" x 5' 4" (2.44m x 1.63m)

Window to side aspect, bath with shower over, wash basin and WC



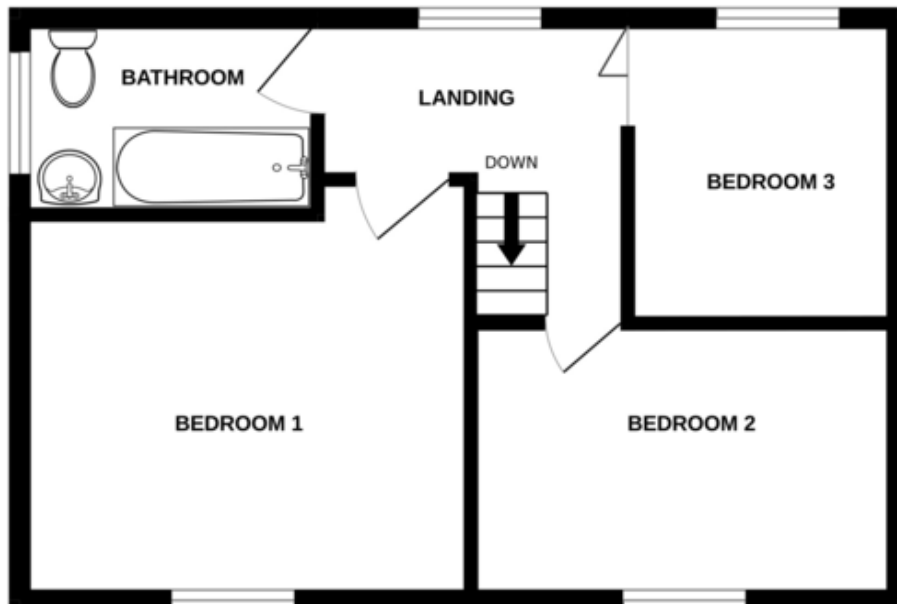
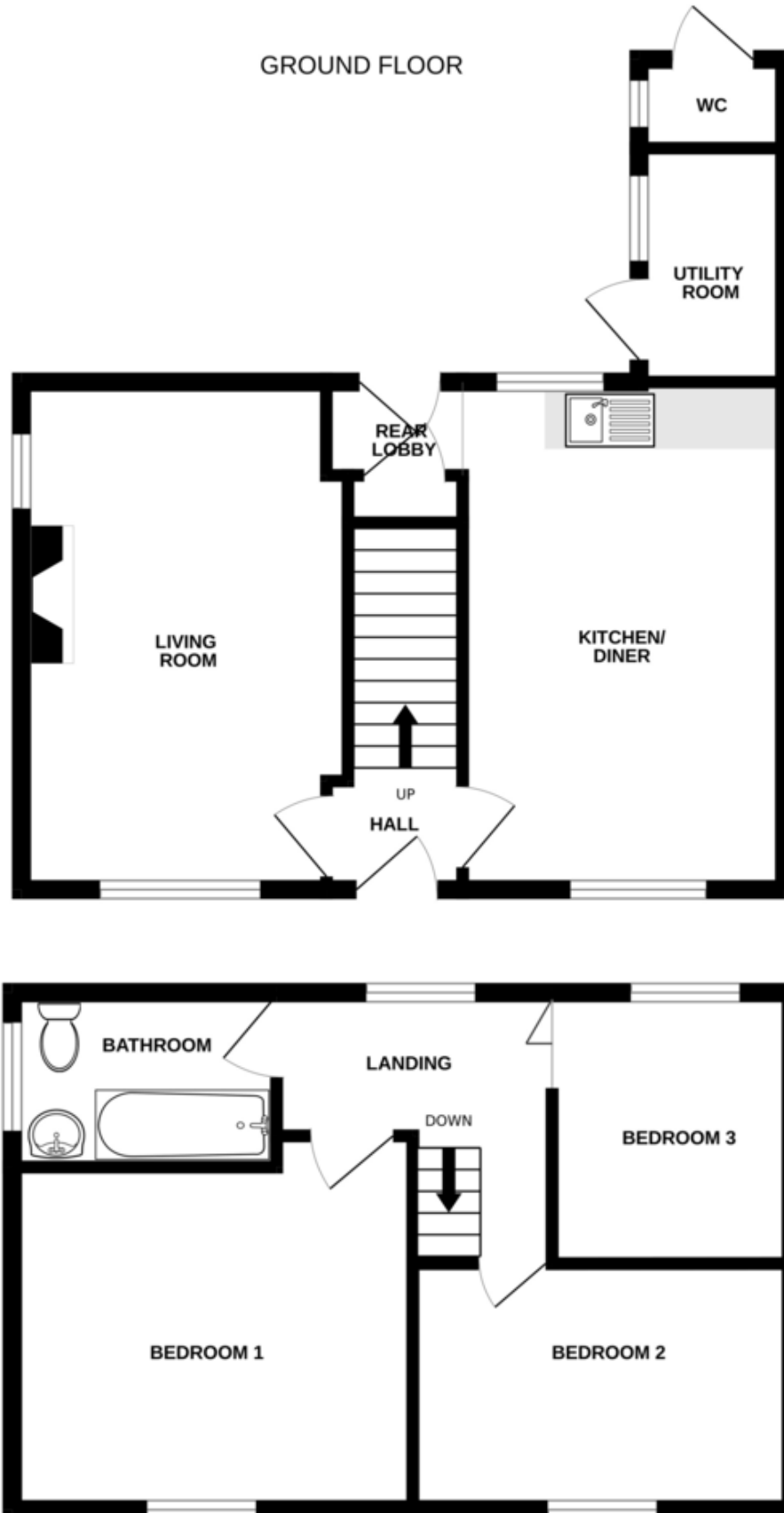




London Road, Feering CO5 9EP



FLOORPLAN



CONTACT
1 Church Road
Tiptree
CO5 0LG

E info@john-alexander.co.uk
T 01621 814334 www.john-alexander.co.uk

Find us on..

