



9 Northern Close, Caister-On-Sea

£200,000 Freehold

A two-bedroom semi-detached bungalow in a prime location just a short walk to the beach. Offering a spacious living room, off-road parking and garage, and a garden filled with potential. Ideal for first-time buyers seeking a renovation project to create their dream coastal home.

Tenure: Freehold

A two-bedroom semi-detached bungalow in a prime location just a short walk to the beach. Offering a spacious living room, off-road parking and garage, and a garden filled with potential. Ideal for first-time buyers seeking a renovation project to create their dream coastal home.

LOCATION

Caister-On-Sea, located just a stone's throw away from the vibrant coastal town of Great Yarmouth, provides residents with the perfect balance between the tranquillity of village life and easy access to modern amenities. This coastal gem is famous for its long sandy beaches, perfect for leisurely strolls and enjoying the sea air. The village itself boasts a strong sense of community, with local shops, schools, and recreational facilities, ensuring a fulfilling lifestyle for all residents. Northern Close's location adds to its allure, being within easy reach of the beach, village amenities, and well-connected road networks, promising a relaxed, coastal living experience with all the necessary conveniences close at hand.

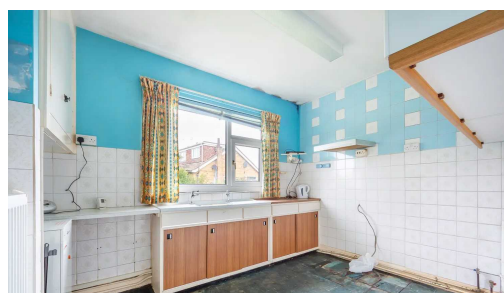
NORTHERN CLOSE



A two-bedroom semi-detached bungalow in a prime location just a short walk to the beach. Offering a spacious living room, off-road parking and garage, and a garden filled with potential. Ideal for first-time buyers seeking a renovation project to create their dream coastal home.

LOCATION

Caister-On-Sea, located just a stone's throw away from the vibrant coastal town of Great Yarmouth, provides residents with the perfect balance between the tranquillity of village life and easy access to modern amenities. This coastal gem is famous for its long



A two-bedroom semi-detached bungalow in a prime location just a short walk to the beach. Offering a spacious living room, off-road parking and garage, and a garden filled with potential. Ideal for first-time buyers seeking a renovation project to create their dream coastal home.

LOCATION

Caister-On-Sea, located just a stone's throw away from the vibrant coastal town of Great Yarmouth, provides residents with the perfect balance between the tranquillity of village life and easy access to modern amenities. This coastal gem is famous for its long sandy beaches, perfect for leisurely strolls and enjoying the sea air. The village itself boasts a strong sense of community, with local shops, schools, and recreational facilities, ensuring a fulfilling lifestyle for all residents. Northern Close's location adds to its allure, being within easy reach of the beach, village amenities, and well-connected road networks, promising a relaxed, coastal living experience with all the necessary conveniences close at hand.

NORTHERN CLOSE

Introducing this charming two bedroom property, showcasing a spacious living room ideal for cosy evenings in or entertaining guests. Enjoy the convenience of off-road parking including a garage, perfect for securely storing vehicles or outdoor equipment. Just a short walk away from the beach, this home offers the opportunity to relish coastal living within easy reach.

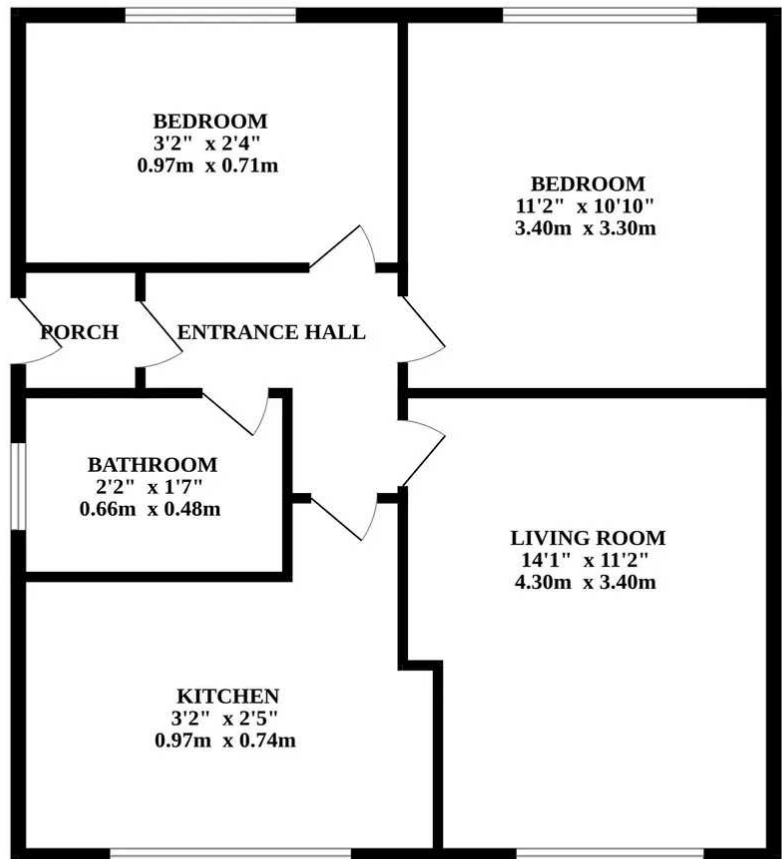
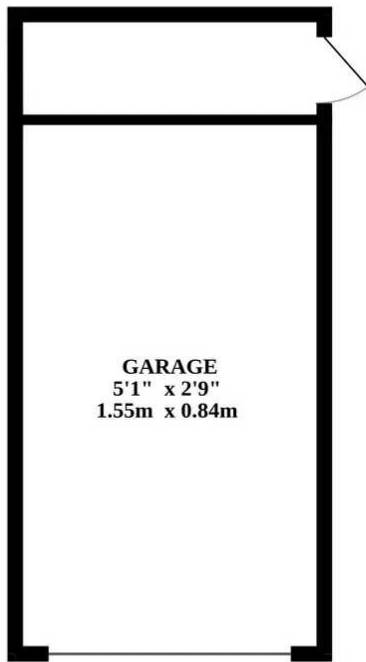
The garden, filled with potential for future landscaping, provides a canvas for green-fingered enthusiasts seeking to create a tranquil outdoor retreat. In close proximity to local amenities, residents can effortlessly access shops, restaurants, and other conveniences. This property presents an exciting prospect for looking to create a beautiful home by the coast. Embrace the endless possibilities that this property offers, making it a prime choice for first time buyers looking for a renovation project.

AGENTS NOTE

We understand the property will be sold freehold and connected to mains water, mains electricity and mains drainage.

Council tax band - B.





Whilst every attempt has been made to ensure the accuracy of the floorplan contained here, measurements of doors, windows, rooms and any other items are approximate and no responsibility is taken for any error, omission or mis-statement. This plan is for illustrative purposes only and should be used as such by any prospective purchaser. The services, systems and appliances shown have not been tested and no guarantee as to their operability or efficiency can be given.
Made with Metropix ©2024

You can include any text here. The text can be modified upon generating your brochure.

You can include any text here. The text can be modified upon generating your brochure.

