

# 12 Chains Drive

CORBRIDGE | NORTHUMBERLAND



**FINEST**  
PROPERTIES





---

A spacious four bedroom townhouse offering bright  
and versatile accommodation over three floors.

---

Corbridge Market Place 0.4 miles | Hexham 3.8 miles | Newcastle International Airport 16.1 miles  
Newcastle City Centre 18.9 miles









## Accommodation in Brief

Entrance Hall | Family Room | Open Plan Kitchen & Dining Room

Utility Room | Sitting Room

Principal Bedroom with En-Suite Shower Room

Three Further Bedrooms | Family Bathroom | WC/Cloakroom

Detached Garage | Parking | Garden











## The Property

12 Chains Drive is a recently refurbished end of terrace townhouse in the heart of the highly sought after village of Corbridge, occupying a convenient and central position within easy walking distance of village amenities. The property overlooks the village green and children's play area nearby. The house provides spacious, light and flexible accommodation over three floors with the added benefit of a garage and additional off-street parking; a real attraction in such a central location.

The front door opens into a vestibule with access to a cloakroom/WC. The family room sits to the front elevation overlooking the garden and green beyond. The kitchen/dining room is located to the rear and is fitted with an extensive range of units with plentiful storage and a breakfast bar, five-ring gas hob together with integrated double oven, fridge/freezer and dishwasher. There is ample space for a dining table and chairs. The dining area is filled with light from floor to ceiling windows and the glazed French doors which lead out to the rear garden. The adjoining utility room adds further practicality.

A spindled staircase leads from the hall to the upper floors. The first floor landing gives access to the sitting room, a large, light and airy room with two windows overlooking the green. The principal bedroom is located on this floor with large fitted wardrobes and an en-suite shower room with suite comprising walk-in shower, wash hand basin and WC.

To the second floor are two further double bedrooms and one single, two of which are located to the front of the property and one to the rear. One of the double bedrooms has a range of fitted wardrobes. The other double bedroom has hatch access to the loft space and views over the green. The three bedrooms on this floor are served by a generous bathroom fitted with bath, separate shower cubicle, wash hand basin and WC.







## Externally

12 Chains Drive has a paved path that leads to the front entrance from the village green. To the rear of the property the garden is laid with artificial grass for ease of maintenance. The property benefits from a garage along with further off-street parking, which is a great feature for a property in the heart of the village.







## Local Information

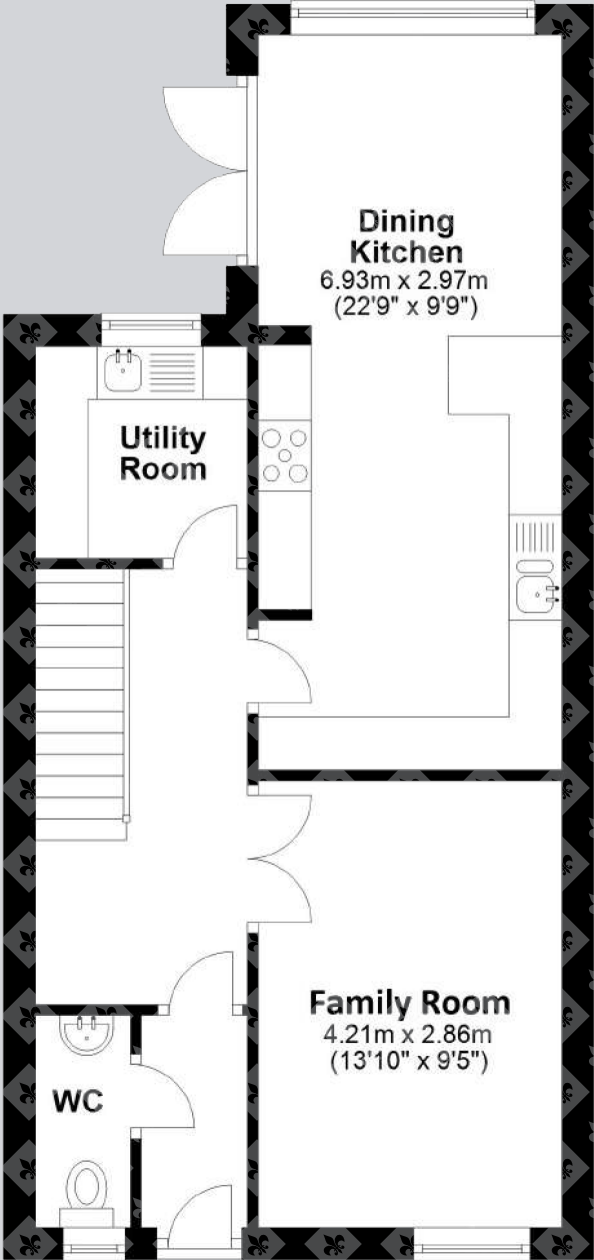
Corbridge is a popular, charming and historic village that sits on the River Tyne in the heart of the scenic Tyne Valley. The village offers a full range of day-to-day amenities with a wide variety of shops, restaurants, inns, doctors' and dentists' surgeries, community services and a garage, while nearby Matfen Hall and Close House offer excellent leisure facilities. The market town of Hexham is within easy reach and offers more comprehensive services with large supermarkets, a further range of shops, additional schooling and professional services together with a hospital.

For schooling there is a First School and Middle School in the village, while senior schooling is offered in Hexham.

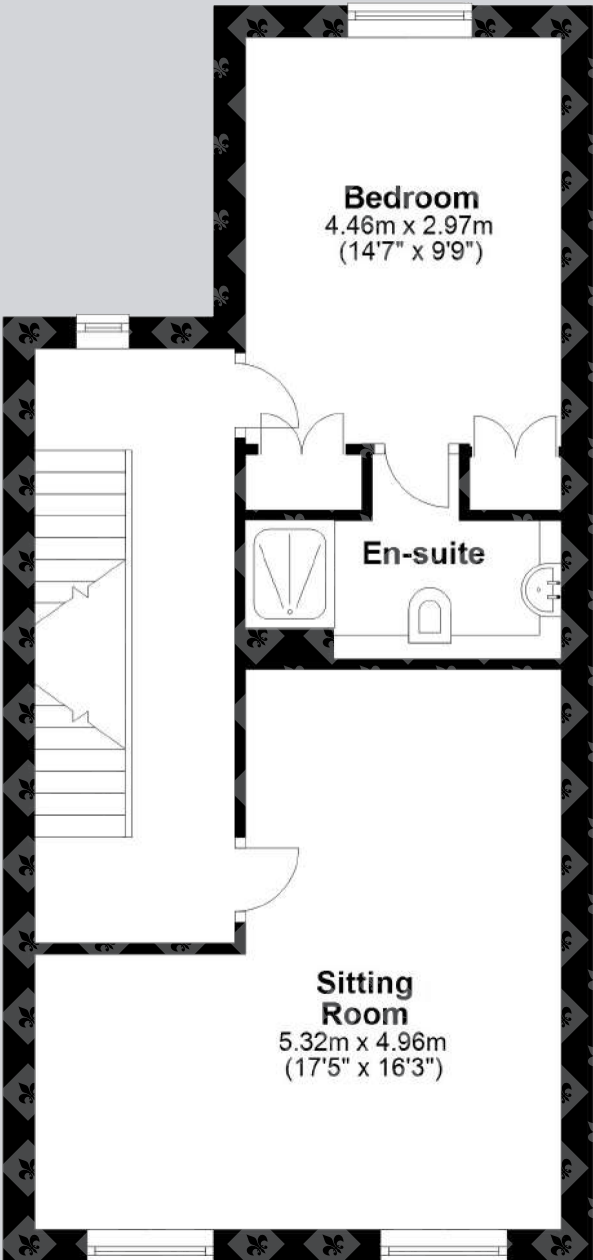
For the commuter Corbridge is convenient for the A69 which gives excellent access to Newcastle in the east and Carlisle in the west, and onward to the A1 and M6. There is a railway station on the edge of the village which provides cross country services to Newcastle and Carlisle where connecting main line rail services are available to major UK cities north and south. Newcastle International Airport is also very accessible.



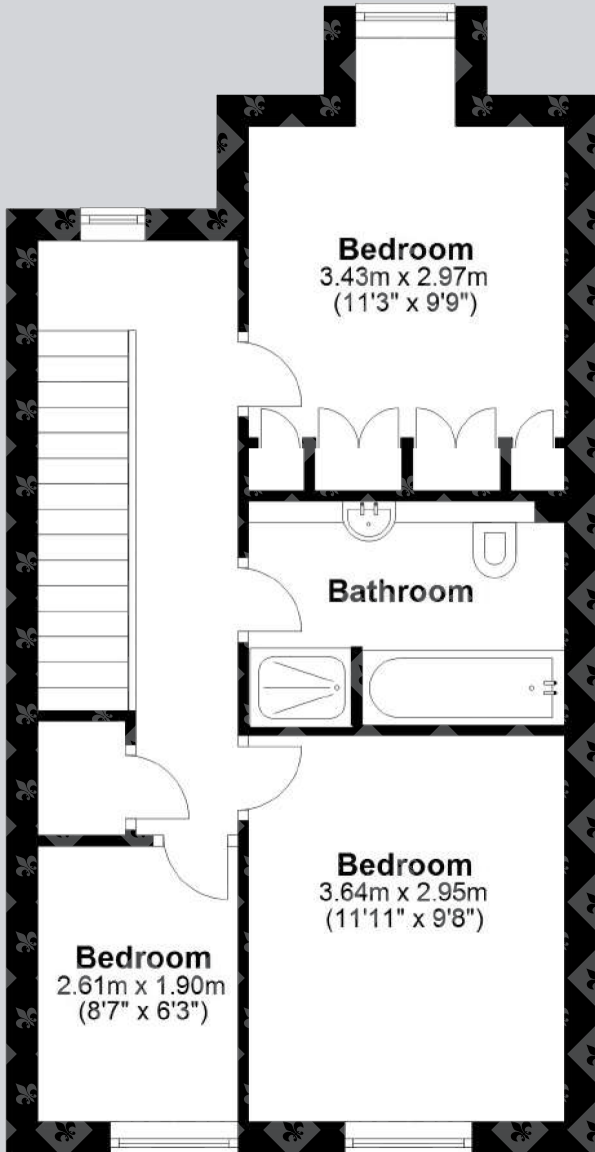
Floor Plans



Ground Floor



First Floor



Second Floor

Total area: approx. 196.8 sq. metres (2188 sq. feet)



## Directions

Head north on Market Place on the B6529. Turn right onto Stagshaw Road/B6529. Turn right onto St Helen's Lane and continue for 100 yards. Turn right into Chains Drive. 12 Chains Drive will be found on the left.

Google Maps

what3words



///arrive.grad.passport

## Wayleaves, Easements & Rights of Way

The property is being sold subject to all existing wayleaves, easements and rights of way, whether or not specified within the sales particulars.

## Services

Mains electricity, gas, water and drainage.

Postcode

NE45 5BP

Council Tax

Band E

EPC

Rating C

Tenure

Freehold

## Viewings Strictly by Appointment

T: 01434 622234

E: [corbridge@finestgroup.co.uk](mailto:corbridge@finestgroup.co.uk)







---

**Finest Properties**

15 Market Place | Corbridge | Northumberland | NE45 5AW

01434 622234

[corbridge@finestgroup.co.uk](mailto:corbridge@finestgroup.co.uk)

[finestproperties.co.uk](https://finestproperties.co.uk)

*Specialists in the marketing  
of distinctive property*

---

**IMPORTANT INFORMATION** Finest Properties, for themselves and for the Vendors and Lessors of this property whose Agents they are give notice that: (1) The particulars are set out as a general outline only for the guidance of intended purchasers or lessees and do not constitute, nor constitute part of, an offer or contract; (2) All descriptions, dimensions, reference to condition and necessary permissions for use and occupation and other details are given without responsibility and any intending purchasers or tenants should not rely on them as statements or representations of fact, but must satisfy themselves by inspection or otherwise as to the correctness of each of them; (3) No person in the employment of Finest Properties, has any authority to make or give any representation or warranty whatever in relation to this property.