

Hazel Mill

SYLVAN VIEW | EACHWICK | NEWCASTLE UPON TYNE



FINEST
PROPERTIES



A beautifully modernized stone-built retreat offering
panoramic views, luxurious interiors, and extensive
landscaped gardens

Ponteland 5.6 miles | Newcastle International Airport 6.3 miles | Corbridge 10.0 miles
Newcastle City Centre 11.7 miles | Hexham 14.6 miles





HAZEL
MILL

Accommodation in Brief

Ground Floor

Entrance Lobby | Reception Hall | WC | Dining Room | Kitchen
Utility Room | Garden Room | Bedroom | Guest Bedroom | Bathroom
Drawing Room | Sitting Room

First Floor

Landing | Principal Bedroom Suite | Ensuite
Two Further Bedrooms | Bathroom

External

Garage | Gym







The Property

Set amidst beautiful Northumbrian countryside, and only a short distance from the sought-after village of Ponteland, Hazel Mill is a striking detached, stone-built property well positioned to capture panoramic views of the stunning surrounding landscape. The property is surrounded by fabulous, lush gardens that encircle its perimeter and offers ample parking with a sweeping driveway that leads to a spacious double garage with twin doors which has been split to include a gym.

Upon entering the ground floor, visitors are greeted by a large, airy lobby with elegant wood flooring that continues throughout the home. A clear glass door opens into a sunlit, expansive hall featuring a staircase to the upper level and a cloakroom.

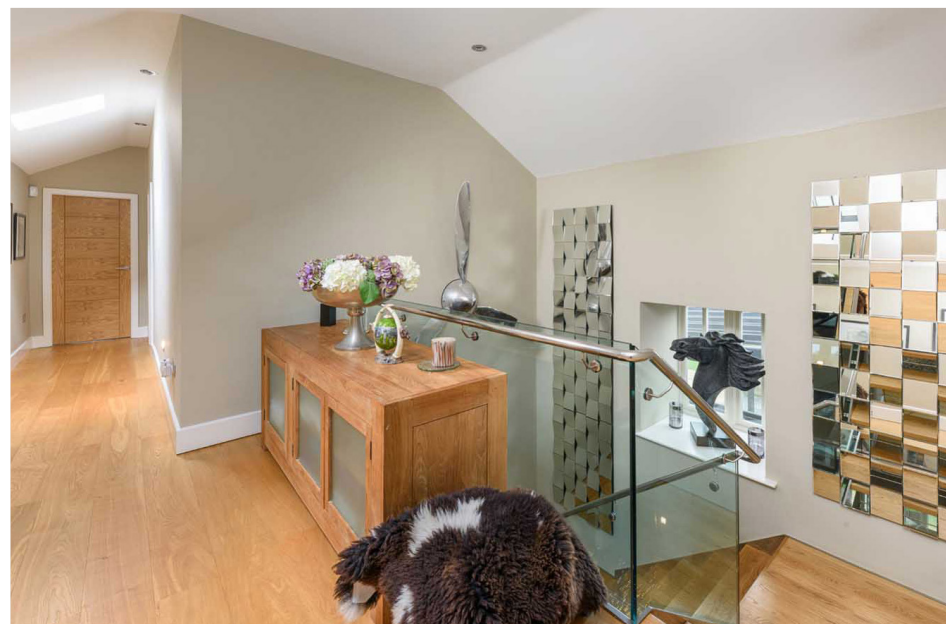
The main living areas of Hazel Mill are beautifully appointed, featuring sharply modern décor with luxurious fittings and fitments. Adjoining the main hall, an elegant double aspect dining room with a built-in bar overlooks the surrounding gardens. An archway from the dining room leads into a distinctly modern and stylish kitchen outfitted with a comprehensive array of cabinetry, high-end integrated appliances, and a grand central island topped with granite, incorporating a double sink and a breakfast bar. A utility room provides additional practicality.



Adjacent bi-folding doors open to a light-filled garden room, which beautifully frames the outdoor areas. A wood-burning stove and direct outdoor access make this space superb for year-round enjoyment. Beyond the dining room, two ground floor bedrooms offer versatile accommodation at Hazel Mill. These bedrooms feature ample storage via fitted wardrobes and share a luxurious bathroom with a walk-in shower.

To the left of the entry hall, additional living spaces include a remodeled double-aspect drawing room, cleverly partitioned by open shelving and featuring a built-in television and a modern gas fireplace. This leads to the main sitting room, a uniquely inviting space with a central suspended fireplace and wrap-around windows that provide views of the gardens and flood the space with abundant natural light.

Ascending the oak and glass staircase brings you to the first-floor gallery landing, which leads to the principal bedroom suite. This luxurious sanctuary features double-aspect windows with cozy seats, ample wardrobe space, and an en-suite bathroom with both a freestanding tub and a separate shower. Two more bedrooms with built-in wardrobes share a Jack & Jill bathroom.









Externally

Externally, the rear of Hazel Mill offers a spectacular vista of rolling fields, ideal for leisurely days or hosting gatherings. Landscaped gardens, mature trees, and decorative shrubs feature alongside paved terraces, a covered deck, and a scenic pond with a rope-handled wooden bridge leading to a decked hot tub area. In addition to ample parking space and a double garage, the property also includes a 3.4-acre paddock with a field shelter.

Local Information

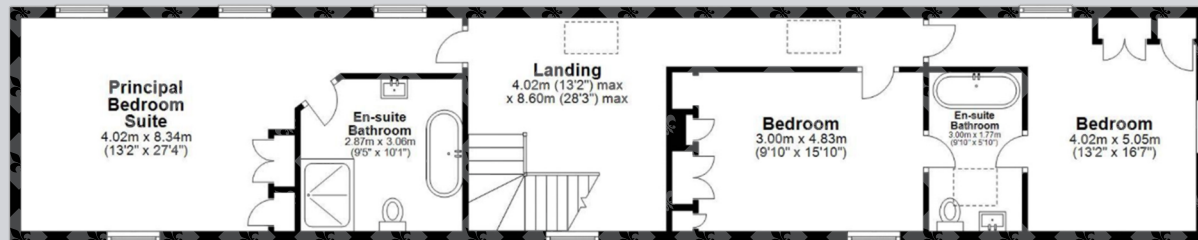
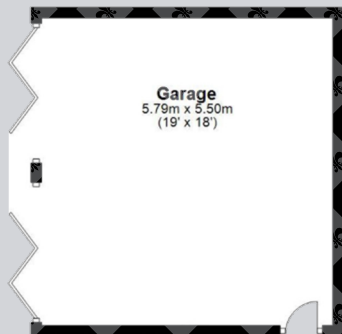
The nearby historic village of Ponteland offers a good range of day-to-day facilities including newsagents, grocery stores, public houses, critically-acclaimed restaurants and bistros, boutiques and other local businesses together with a wide range of sports clubs and leisure centre. For schooling Ponteland offers a choice of excellent first, middle and senior schools; in addition there are a number of private schools in Newcastle. There is a full range of professional services and hospitals as well as cultural, recreational and shopping facilities in Newcastle city centre.

For the commuter Ponteland is conveniently located for access to Newcastle and beyond, with the A696 running through the village, and the A1 and A69 close by. Newcastle Central station offers main line services to major UK cities north and south and Newcastle International Airport is also within easy reach.





Floor Plans



Total area: approx. 386.6 sq. metres (4161.0 sq. feet)

Directions

To reach your destination from Princes St/B6321, head south towards Middle St/B6529, and almost immediately, turn left onto Main St/B6530. Continue along B6530 for 2.4 miles until you reach the Styford Roundabout. Take the fourth exit onto A69 and drive for about 4.0 miles. Then take the exit towards Horsley/Heddon/B6528 and turn right onto Oatens Bank. After a short distance of 276 feet, turn left onto B6528 and continue for 1.4 miles before turning left at Holey Hall Rd. At the next roundabout, take the second exit onto Stamfordham Rd and proceed for 2.0 miles. Make a left, and shortly thereafter, turn right and follow this road for 0.2 miles, then make another right onto a restricted-usage road to arrive at your destination.

Google Maps

what3words



///populate.pickle.dwarves

Wayleaves, Easements & Rights of Way

The property is being sold subject to all existing wayleaves, easements and rights of way, whether or not specified within the sales particulars.

Services

Mains electricity and water. Private Calor Gas & Drainage. Sewage Treatment System.

Postcode

NE18 0BD

Council Tax

Band G

EPC

Rating E

Tenure

Freehold

Viewings Strictly by Appointment

T: 01434 622234

E: corbridge@finestgroup.co.uk







Finest Properties

15 Market Place | Corbridge | Northumberland | NE45 5AW

01434 622234

corbridge@finestgroup.co.uk

finestproperties.co.uk

*Specialists in the marketing
of distinctive property*

IMPORTANT INFORMATION Finest Properties, for themselves and for the Vendors and Lessors of this property whose Agents they are give notice that: (1) The particulars are set out as a general outline only for the guidance of intended purchasers or lessees and do not constitute, nor constitute part of, an offer or contract; (2) All descriptions, dimensions, reference to condition and necessary permissions for use and occupation and other details are given without responsibility and any intending purchasers or tenants should not rely on them as statements or representations of fact, but must satisfy themselves by inspection or otherwise as to the correctness of each of them; (3) No person in the employment of Finest Properties, has any authority to make or give any representation or warranty whatever in relation to this property.