



105 The Limes, Green Street, St. Helier  
£331,875

**BROADLANDS**  
FINDING YOU A HOME SINCE 1972



# 105 The Limes, Green Street

, St. Helier

- First Time Buyers only - Andium assisted purchase scheme
- 2 bedroom first floor apartment
- New build in fantastic location
- 1 designated parking space in the basement with lift access to your floor
- No deposit required for your mortgage
- Great storage
- Havre De Pas location great for work and the beach
- Sole agents
- Call Doug on 07700702585 or [doug@broadlandsjersey.com](mailto:doug@broadlandsjersey.com)

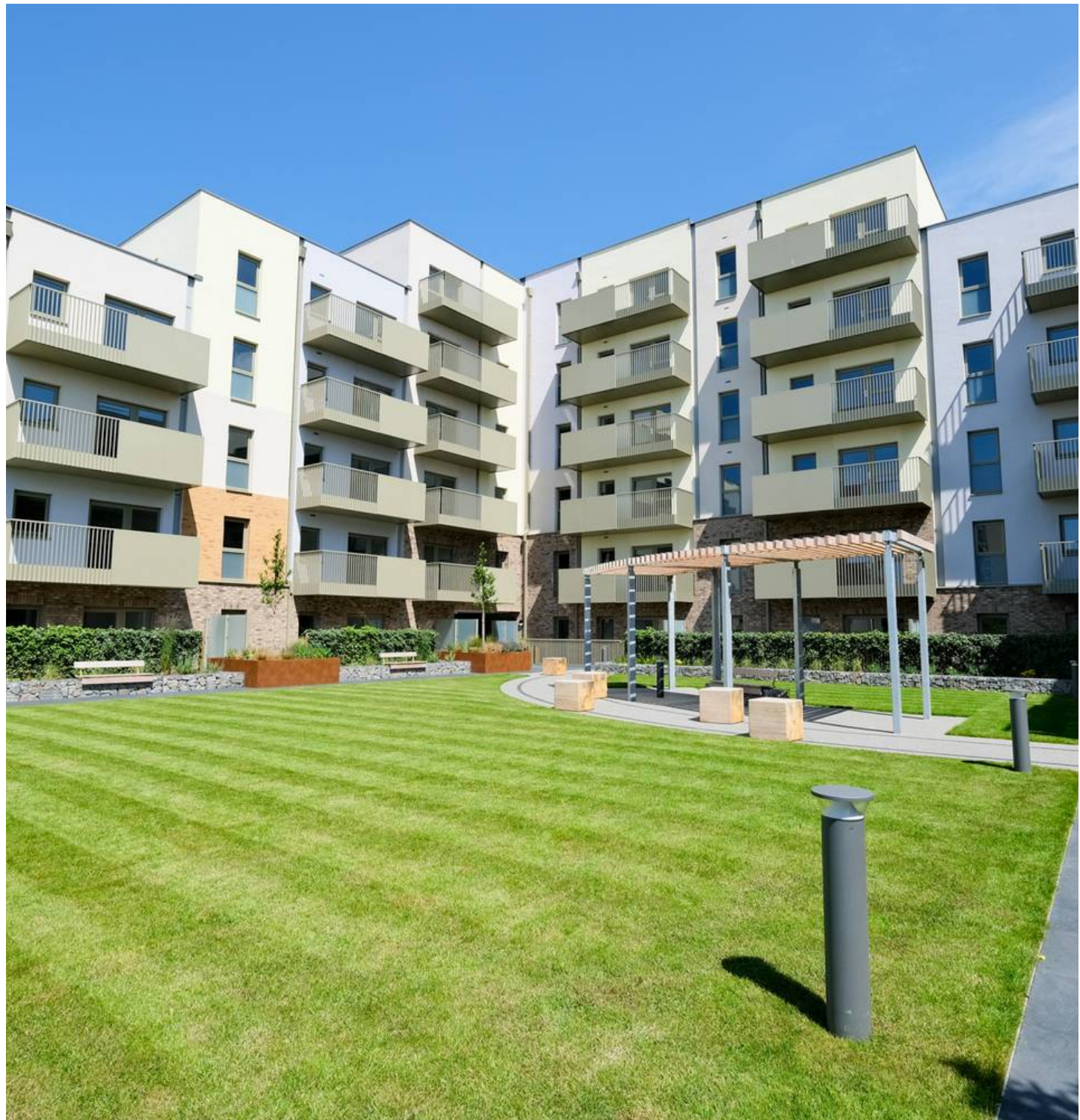


# 105 The Limes, Green Street

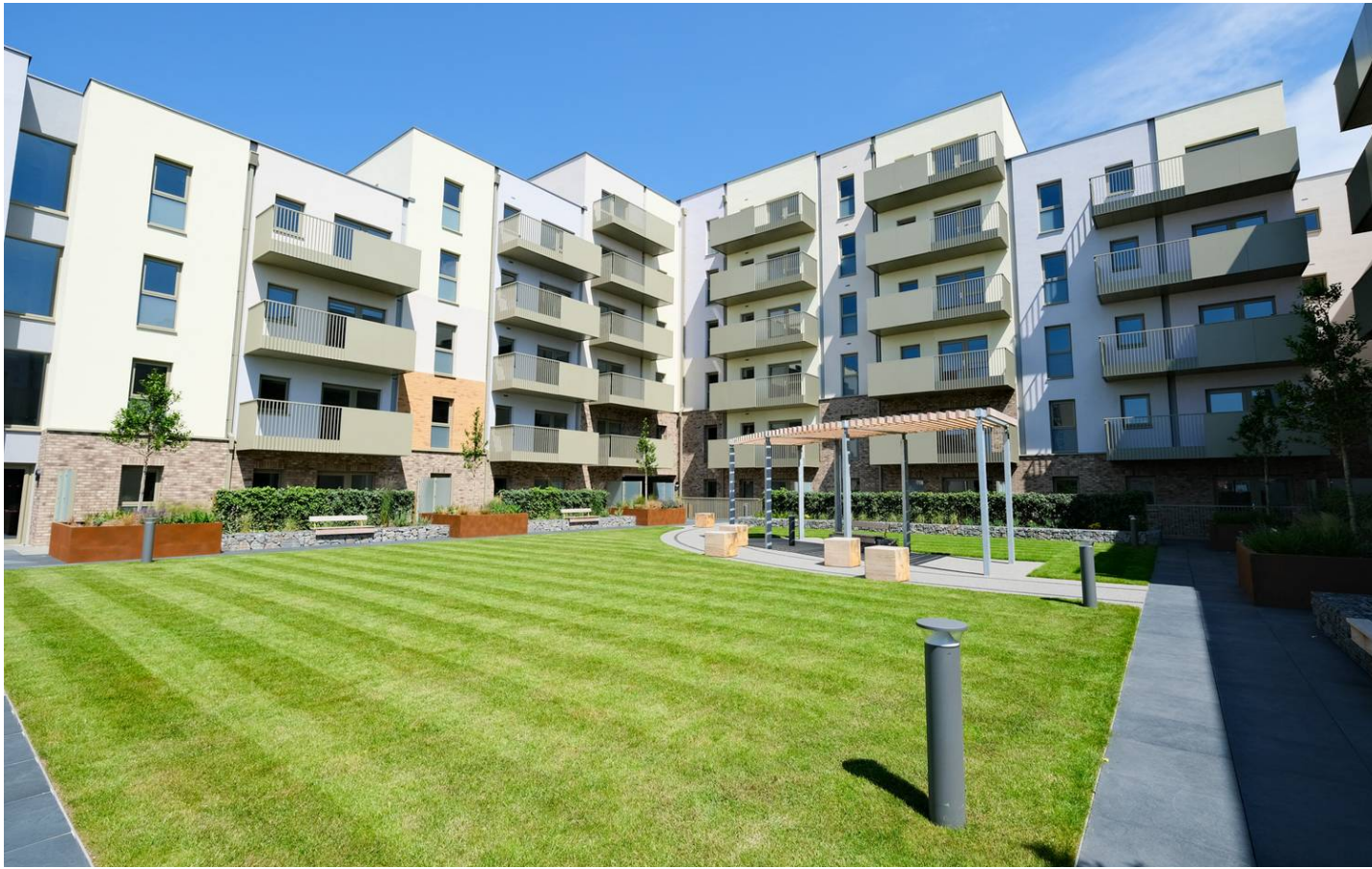
, St. Helier

Stunning new build development by Andium Homes at Havre des Pas. This first floor 2-bedroom apartment with parking has just completed construction and is solely for first time buyers using the assisted purchase pathway scheme. Truly a great scheme allowing Jersey Residents without a deposit to enter the local housing market. The full value of the property is £442,500 but with APP you would require a £331,875 mortgage.

The property comprises of two bedrooms, a double and a single, modern open plan living area with a Juliet balcony with views over the communal garden. House bathroom and two large storage cupboards within the apartment. With one undercover parking space with lift access from the parking to your apartment floor. Set in beautiful communal gardens this amazing new development is conveniently located for a either a short walk to work or in the opposite direction to the beach.







### **Living**

Modern open plan living area, great storage within the apartment.

### **Sleeping**

Double bedroom and spacious house bathroom.

### **Services**

All main services, double glazing and electric heating. Service charges £130 pcm.

### **Assisted purchase scheme**

Please let us know your assisted purchase number when booking a viewing. AP number that you will have received from Andium under their Assisted Purchase Pathway. If you have not applied through the Assisted Purchase Pathway already, please fill out Andium's application form. You can find the form and further information on this link - <https://www.andiumhomes.je/assisted-purchase-pathway/>

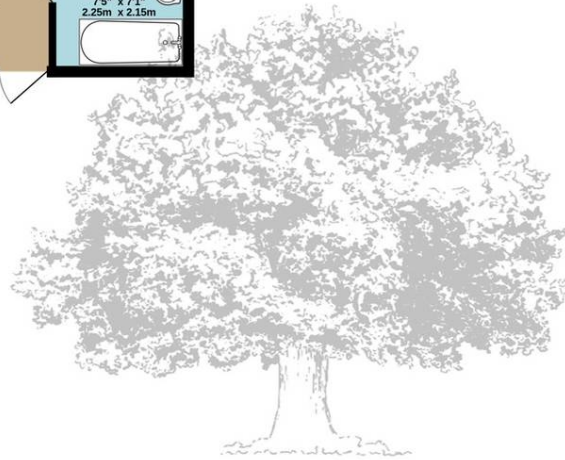
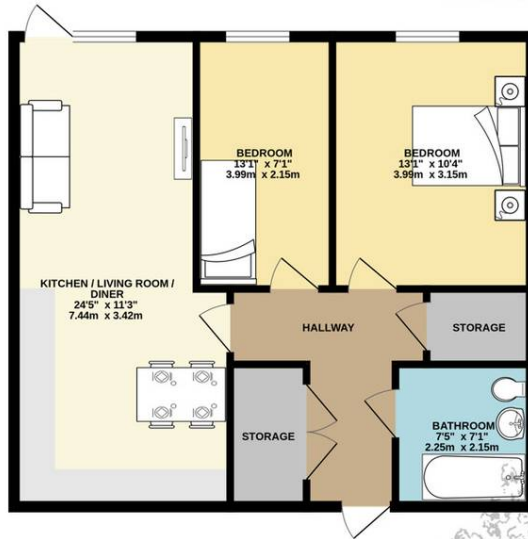








104 LIMES  
718 sq.ft. (66.7 sq.m.) approx.



TOTAL FLOOR AREA : 718 sq.ft. (66.7 sq.m.) approx.

Whilst every attempt has been made to ensure the accuracy of the floorplan contained here, measurements of doors, windows, rooms and any other items are approximate and no responsibility is taken for any error, omission or mis-statement. This plan is for illustrative purposes only and should be used as such by any prospective purchaser. The services, systems and appliances shown have not been tested and no guarantee as to their operability or efficiency can be given.  
Made with Metropix ©2024





## Broadlands

Broadlands Estates, Library Place - JE2 3NL

01534 880770 • [enquiries@broadlandsjersey.com](mailto:enquiries@broadlandsjersey.com) • [www.broadlandsjersey.com/](http://www.broadlandsjersey.com/)

# BROADLANDS

FINDING YOU A HOME SINCE 1972